

CYGNAL

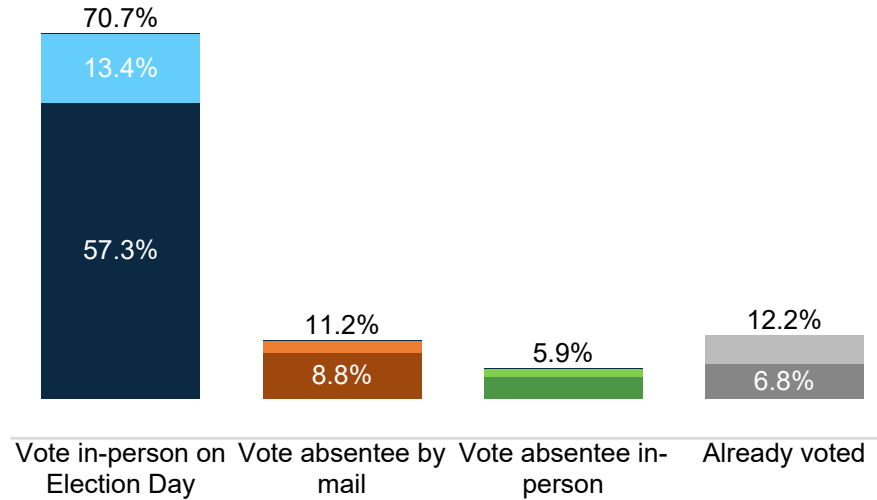
Survey of Likely General Election Voters
Ohio Statewide

October 22 – 26, 2022

n=1,817 | $\pm 2.30\%$

Vote Method

Fielding Date **October 26**

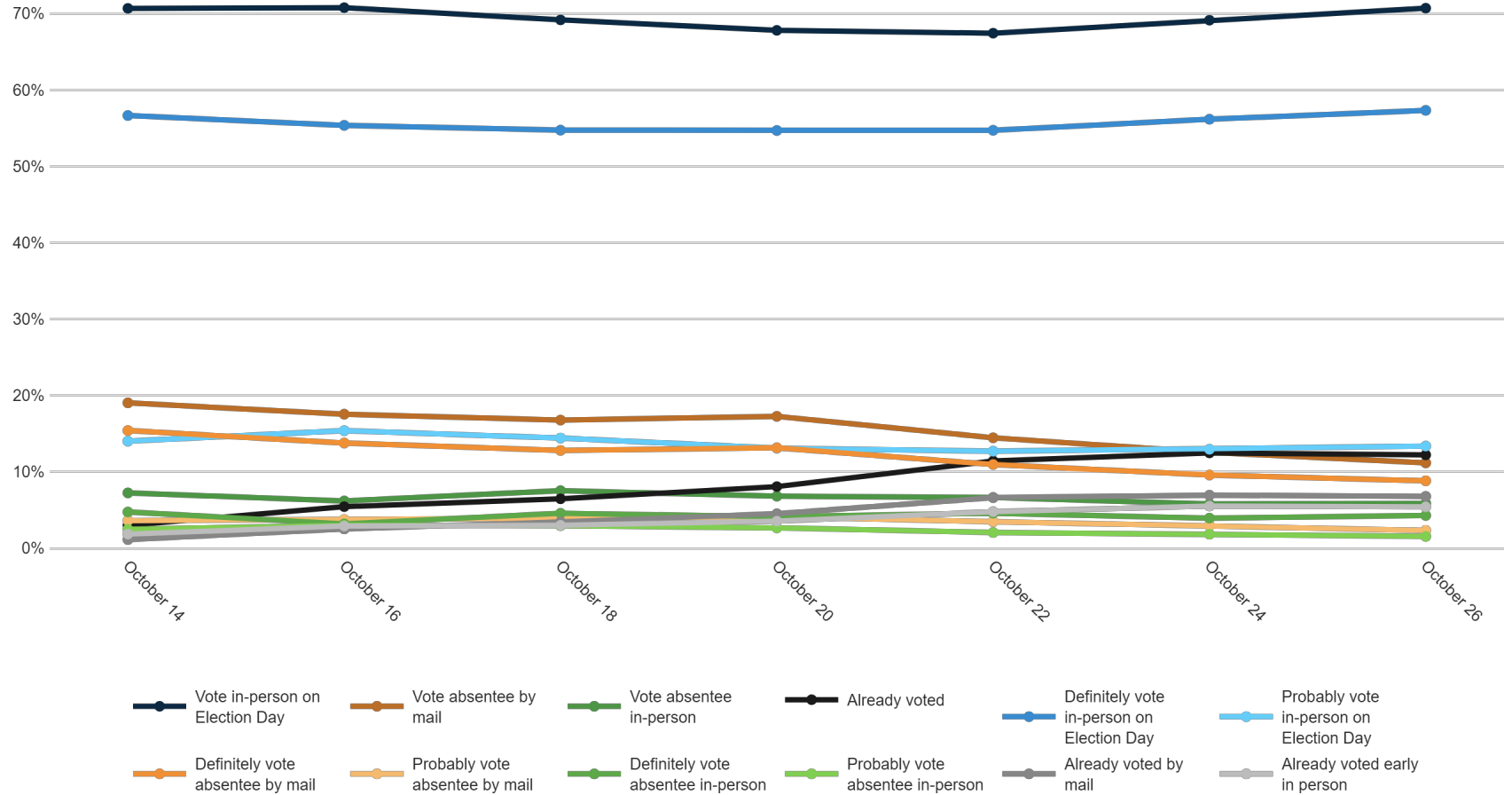


	F 18 - 34	F 35 - 49	F 50 - 64	F 65+	M 18 - 34	M 35 - 49	M 50 - 64	M 65+	Dayton/NW OH	Cincinnati	Columbus/C OH	Cleveland/Akron	Republican	Democrat	Unaffiliated	White	Black	Minorities	F College	F No College	M College	M No College	<\$70k	\$70k+	Generic Undec	US Sen Undec	Gov Undec	Trump '20	Biden '20	Always Votes	Usually Votes	Smtms Votes	Rarely Votes
Vote in-person on Election Day	80%	72%	70%	63%	68%	82%	74%	65%	75%	71%	68%	70%	78%	60%	73%	71%	66%	79%	70%	69%	67%	76%	68%	72%	68%	72%	76%	80%	60%	70%	73%	70%	68%
Vote absentee by mail	8%	12%	10%	14%	11%	7%	9%	15%	8%	11%	11%	13%	7%	17%	10%	10%	17%	13%	10%	12%	12%	9%	14%	9%	17%	12%	11%	6%	16%	10%	13%	14%	19%
Vote absentee in-person	5%	6%	7%	5%	11%	5%	5%	5%	4%	4%	8%	6%	5%	8%	5%	6%	8%	4%	7%	5%	6%	5%	5%	7%	7%	7%	5%	8%	6%	6%	8%	4%	
Already voted	6%	10%	12%	18%	10%	6%	13%	15%	14%	13%	13%	11%	10%	15%	12%	13%	10%	4%	12%	13%	14%	9%	13%	12%	8%	9%	6%	9%	16%	14%	8%	8%	9%
Definitely vote in-person on Election Day	64%	56%	57%	47%	55%	66%	65%	56%	64%	57%	55%	56%	64%	48%	58%	58%	53%	47%	59%	52%	57%	65%	55%	59%	49%	49%	54%	67%	48%	62%	50%	48%	35%
Probably vote in-person on Election Day	17%	16%	13%	16%	13%	16%	9%	9%	11%	14%	13%	14%	14%	12%	15%	12%	13%	32%	11%	18%	10%	11%	13%	13%	19%	22%	22%	12%	12%	8%	23%	23%	33%
Definitely vote absentee by mail	6%	10%	7%	11%	8%	6%	6%	14%	7%	10%	8%	10%	6%	13%	7%	8%	13%	9%	8%	9%	10%	8%	11%	8%	12%	9%	8%	5%	13%	9%	9%	8%	13%
Probably vote absentee by mail	2%	2%	3%	3%	3%	1%	2%	1%	1%	1%	2%	3%	1%	3%	3%	2%	3%	5%	2%	3%	2%	2%	3%	2%	5%	3%	3%	1%	3%	1%	4%	6%	6%
Definitely vote absentee in-person	4%	5%	6%	4%	6%	1%	4%	4%	3%	3%	6%	4%	4%	6%	3%	4%	5%	4%	5%	4%	4%	4%	4%	5%	3%	5%	3%	4%	5%	5%	4%	5%	1%
Probably vote absentee in-person	1%	1%	1%	1%	5%	3%	1%	0%	1%	1%	2%	2%	1%	2%	2%	2%	3%	0%	2%	1%	2%	1%	2%	2%	4%	3%	4%	1%	2%	1%	2%	3%	3%
Already voted by mail	3%	5%	7%	11%	5%	2%	8%	8%	6%	9%	7%	7%	6%	9%	6%	7%	7%	4%	6%	8%	8%	5%	8%	6%	7%	8%	4%	5%	9%	7%	6%	6%	5%
Already voted early in person	4%	5%	5%	7%	5%	3%	5%	7%	8%	5%	6%	4%	5%	7%	5%	6%	3%	0%	6%	5%	6%	4%	5%	6%	1%	1%	2%	5%	7%	7%	2%	2%	3%

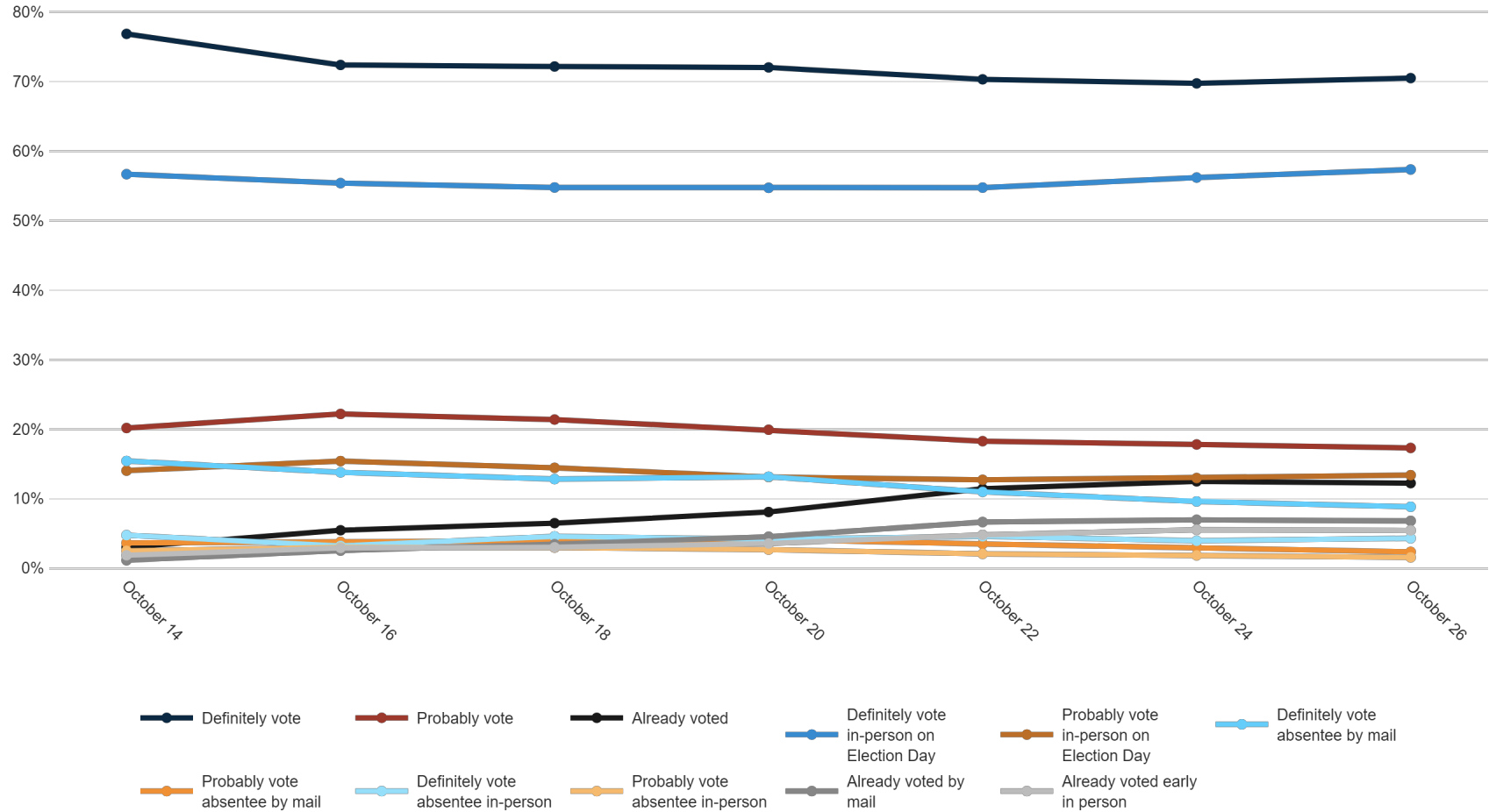
How do you plan to vote in the November general election for U.S. Senate, Governor, and state legislature?



Trend: Vote Method



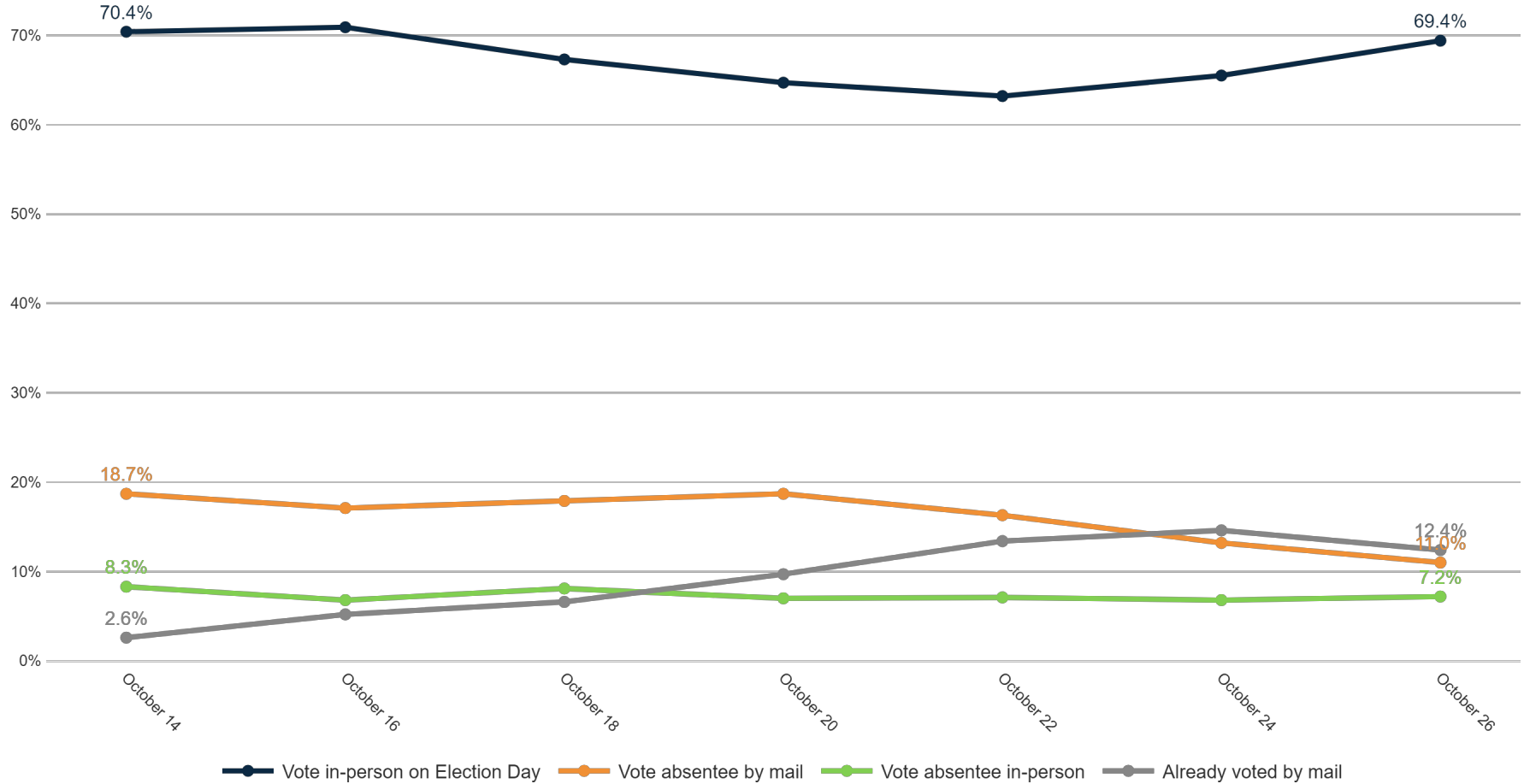
Trend: Vote Method (Definitely/ Probably Vote)



MRP Estimates: Vote Method

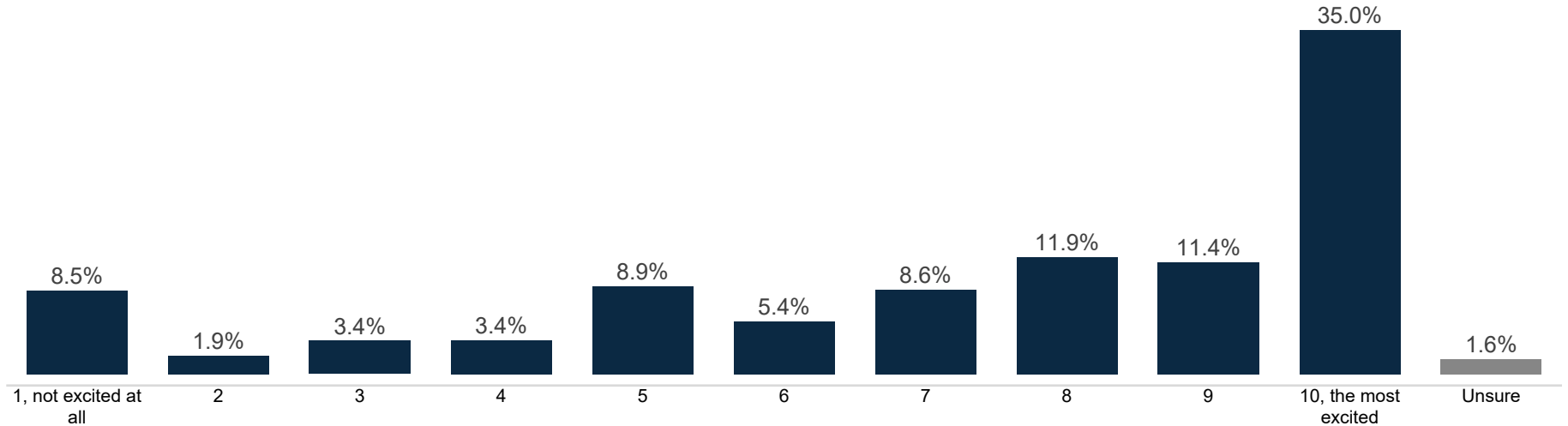
Voter Group

Columbus OH



Enthusiasm

Fielding Date **October 26**

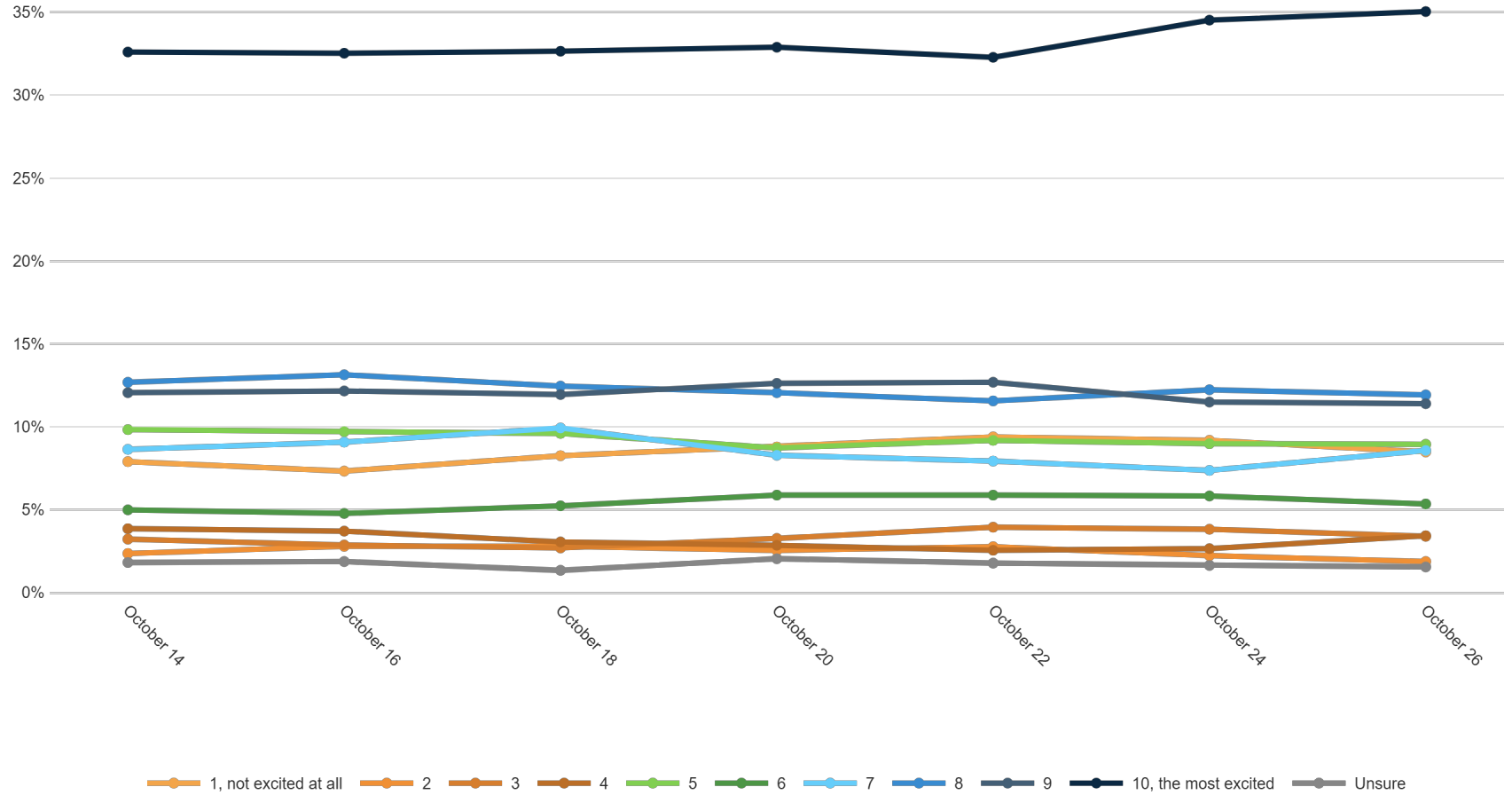


	F 18 - 34	F 35 - 49	F 50 - 64	F 65+	M 18 - 34	M 35 - 49	M 50 - 64	M 65+	Dayton/NW OH	Cincinnati	Columbus/C OH	Cleveland/Akron	Republican	Democrat	Unaffiliated	White	Black	Minorities	F College	F No College	M College	M No College	<\$70k	\$70k+	Generic Undec	US Sen Undec	Gov Undec	Trump '20	Biden '20	Always Votes	Usually Votes	Smtms Votes	Rarely Votes
1, not excited at all	6%	4%	9%	11%	10%	12%	4%	10%	7%	8%	9%	9%	7%	7%	13%	8%	12%	12%	8%	8%	9%	8%	8%	20%	20%	19%	8%	7%	8%	7%	9%	14%	
2	3%	1%	1%	1%	2%	2%	1%	4%	2%	1%	2%	2%	2%	2%	2%	2%	3%	3%	1%	2%	3%	2%	1%	4%	3%	3%	2%	1%	1%	3%	3%	8%	
3	5%	4%	3%	3%	4%	4%	2%	4%	3%	2%	3%	4%	3%	2%	5%	3%	4%	0%	3%	4%	2%	4%	4%	3%	11%	9%	7%	3%	3%	2%	7%	4%	7%
4	6%	4%	3%	3%	10%	2%	2%	1%	3%	2%	4%	4%	3%	3%	4%	3%	8%	3%	5%	3%	3%	5%	2%	8%	4%	2%	3%	3%	2%	6%	6%	15%	
5	13%	10%	9%	10%	5%	8%	8%	8%	9%	9%	9%	9%	7%	9%	11%	8%	14%	3%	7%	12%	7%	8%	9%	7%	17%	20%	16%	7%	9%	7%	14%	13%	14%
6	9%	7%	7%	5%	2%	6%	5%	4%	4%	4%	6%	6%	4%	6%	6%	6%	5%	4%	8%	6%	3%	5%	6%	5%	6%	6%	6%	4%	7%	5%	8%	4%	6%
7	14%	13%	7%	6%	10%	12%	8%	5%	10%	6%	8%	9%	9%	9%	8%	8%	9%	18%	9%	9%	7%	9%	8%	9%	4%	9%	7%	9%	9%	8%	10%	13%	7%
8	5%	13%	13%	12%	12%	11%	17%	10%	12%	14%	11%	12%	12%	14%	10%	13%	8%	16%	13%	10%	14%	12%	11%	13%	5%	2%	7%	12%	13%	12%	14%	12%	6%
9	8%	13%	11%	17%	9%	8%	8%	13%	12%	11%	11%	12%	11%	10%	12%	8%	9%	14%	13%	10%	9%	12%	12%	3%	9%	6%	12%	12%	13%	9%	8%	4%	
10, the most excited	26%	29%	36%	31%	35%	34%	44%	41%	37%	40%	36%	32%	39%	35%	28%	35%	33%	27%	32%	31%	41%	38%	33%	38%	15%	16%	22%	39%	35%	42%	22%	22%	14%
Unsure	4%	3%	1%	1%	1%	2%	2%	0%	2%	2%	2%	1%	1%	1%	2%	2%	0%	1%	2%	1%	1%	2%	1%	8%	4%	4%	1%	1%	1%	6%	3%		

How excited are you to vote in the November general election for Governor, Congress, and state legislature on a scale of 1 to 10, with 1 being not excited at all and 10 being very excited?

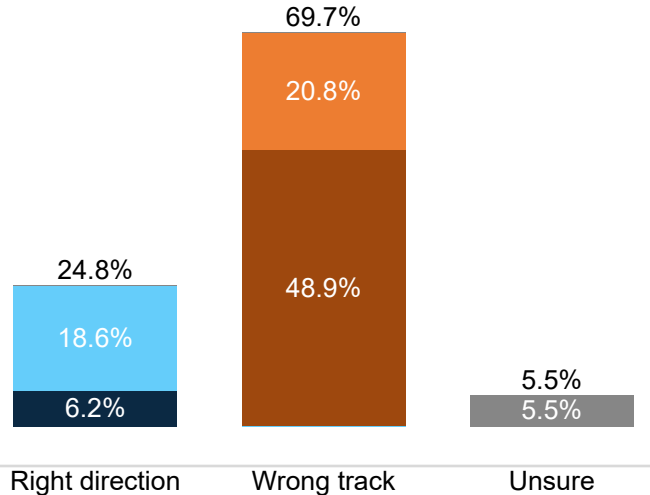


Trend: Enthusiasm



US Right Direction/ Wrong Track

Fielding Date **October 26**

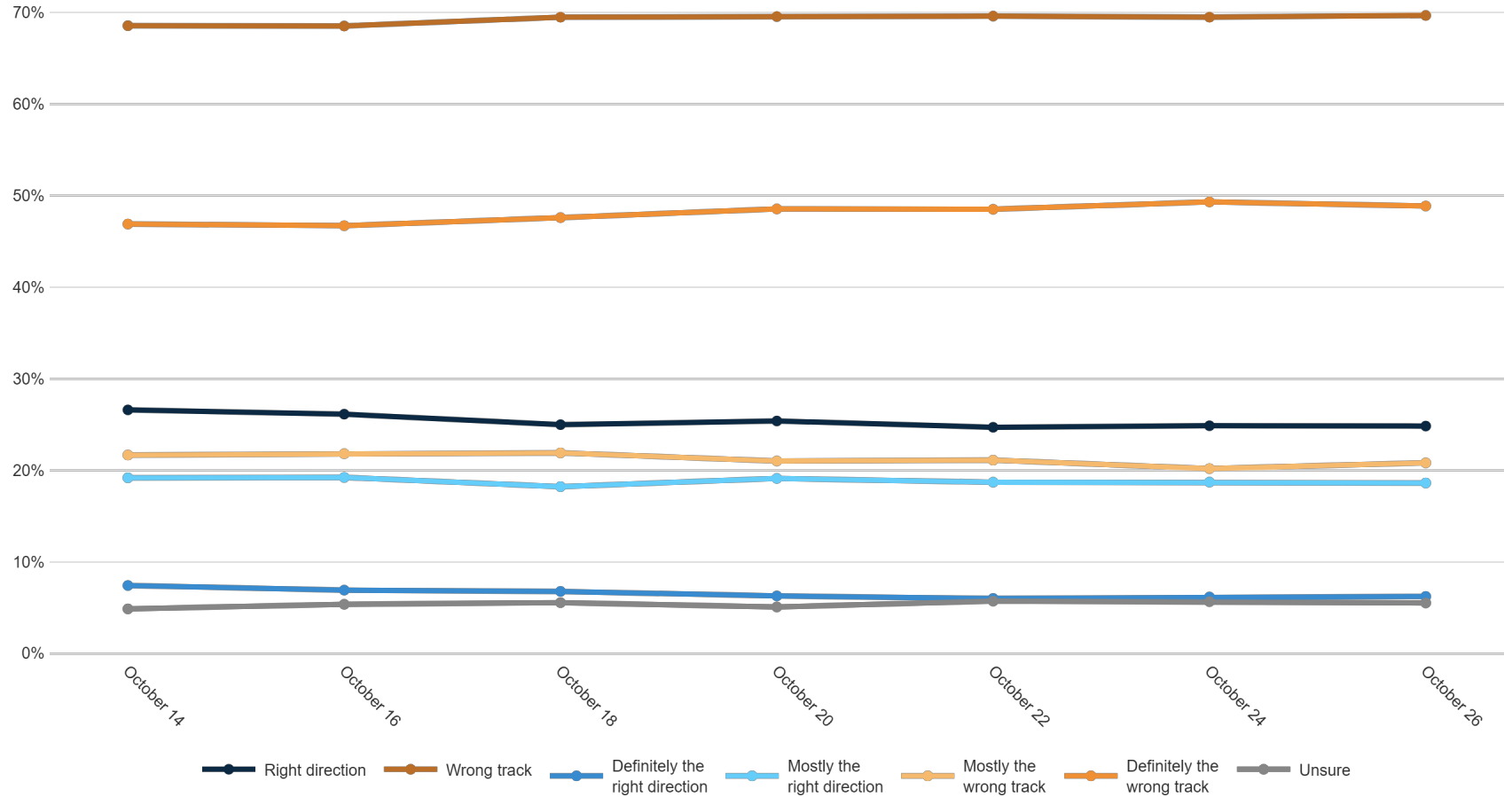


	F 18-34	F 35-49	F 50-64	F 65+	M 18-34	M 35-49	M 50-64	M 65+	Dayton/NW OH	Cincinnati	Columbus/C OH	Cleveland/Akron	Republican	Democrat	Unaffiliated	White	Black	Minorities	F College	F No College	M College	M No College	<\$70k	\$70k+	Generic Undec	US Sen Undec	Gov Undec	Trump '20	Biden '20	Always Votes	Usually Votes	Smtms Votes	Rarely Votes
Right direction	25%	27%	26%	27%	32%	22%	20%	21%	27%	24%	24%	25%	8%	51%	20%	24%	33%	30%	30%	24%	27%	20%	25%	25%	10%	10%	13%	7%	48%	25%	21%	32%	26%
Wrong track	70%	68%	67%	64%	61%	73%	78%	75%	69%	69%	72%	69%	91%	40%	74%	72%	55%	58%	62%	70%	69%	77%	69%	70%	73%	71%	72%	92%	43%	70%	73%	58%	64%
Definitely the right direction	8%	4%	5%	7%	11%	7%	4%	6%	7%	6%	7%	6%	2%	13%	4%	6%	9%	10%	6%	6%	7%	6%	7%	6%	3%	1%	3%	2%	11%	7%	5%	8%	6%
Mostly the right direction	17%	23%	21%	20%	21%	14%	16%	15%	20%	18%	17%	19%	5%	38%	16%	18%	24%	21%	24%	18%	20%	14%	18%	20%	7%	9%	10%	4%	37%	19%	16%	24%	20%
Mostly the wrong track	31%	26%	18%	18%	33%	22%	15%	15%	17%	14%	24%	22%	16%	26%	23%	20%	30%	20%	24%	21%	21%	19%	22%	21%	35%	34%	25%	14%	27%	18%	29%	18%	33%
Definitely the wrong track	40%	42%	50%	46%	28%	51%	63%	60%	52%	55%	48%	46%	75%	14%	51%	52%	25%	37%	39%	49%	48%	57%	47%	50%	38%	37%	48%	79%	16%	52%	45%	40%	32%
Unsure	4%	5%	7%	8%	7%	5%	2%	4%	4%	7%	4%	7%	2%	8%	6%	4%	12%	12%	8%	6%	4%	3%	6%	4%	17%	19%	15%	1%	9%	5%	5%	10%	10%

Generally speaking, would you say things in the United States are headed in the right direction or off on the wrong track?



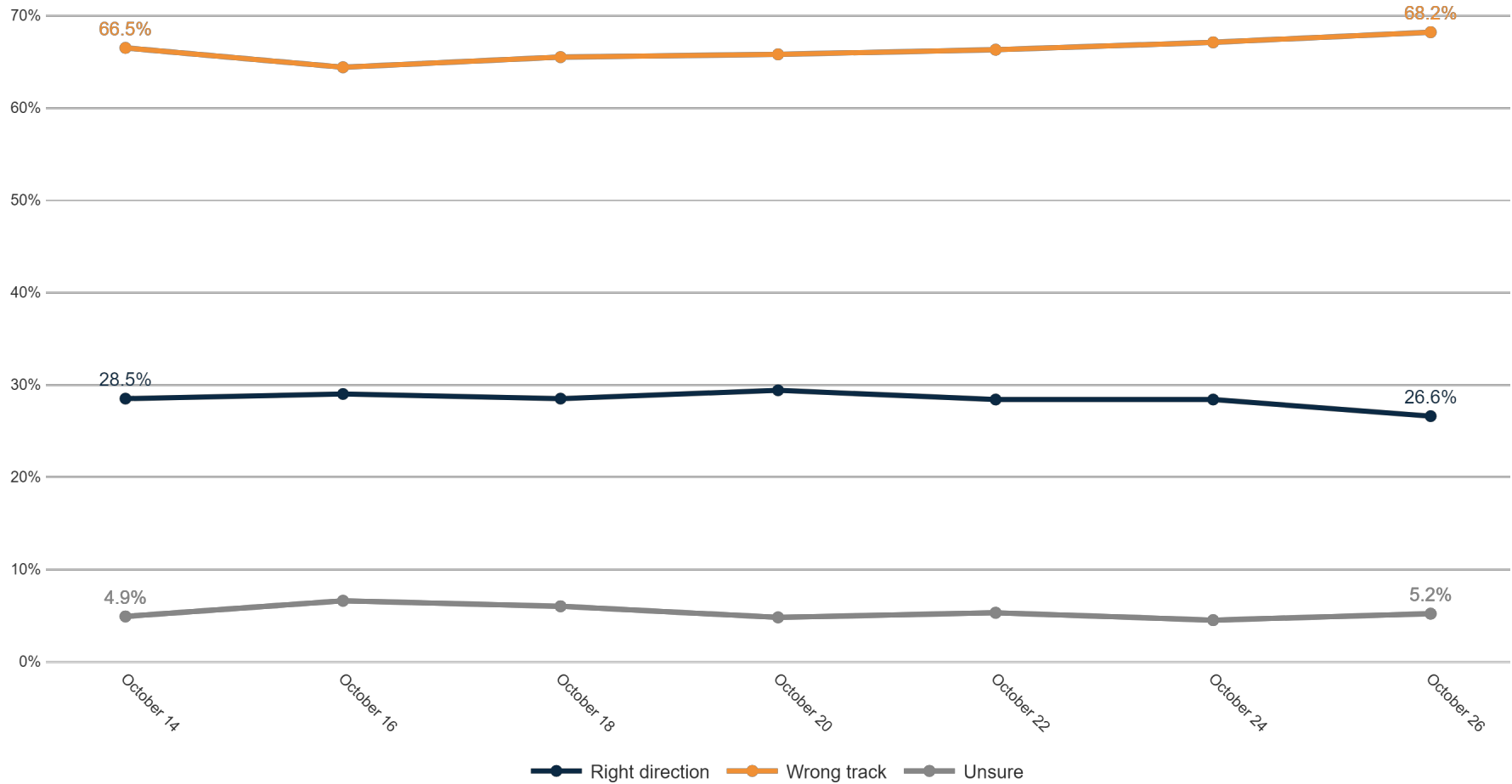
Trend: US Right Direction/ Wrong Track



MRP Estimates: US RD/WT

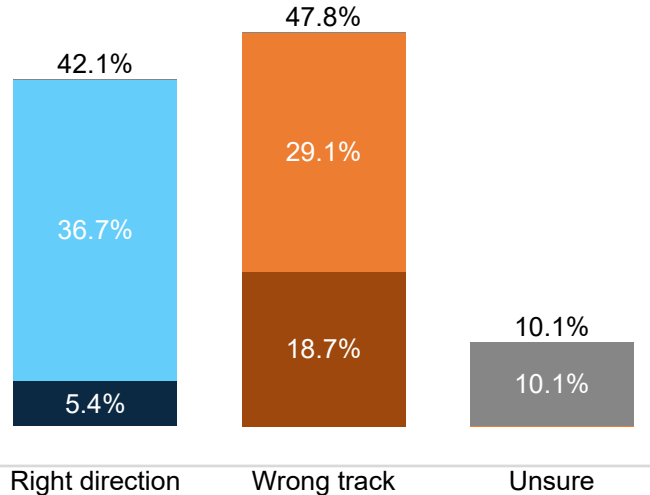
Voter Group

Columbus OH



OH Right Direction/ Wrong Track

Fielding Date **October 26**

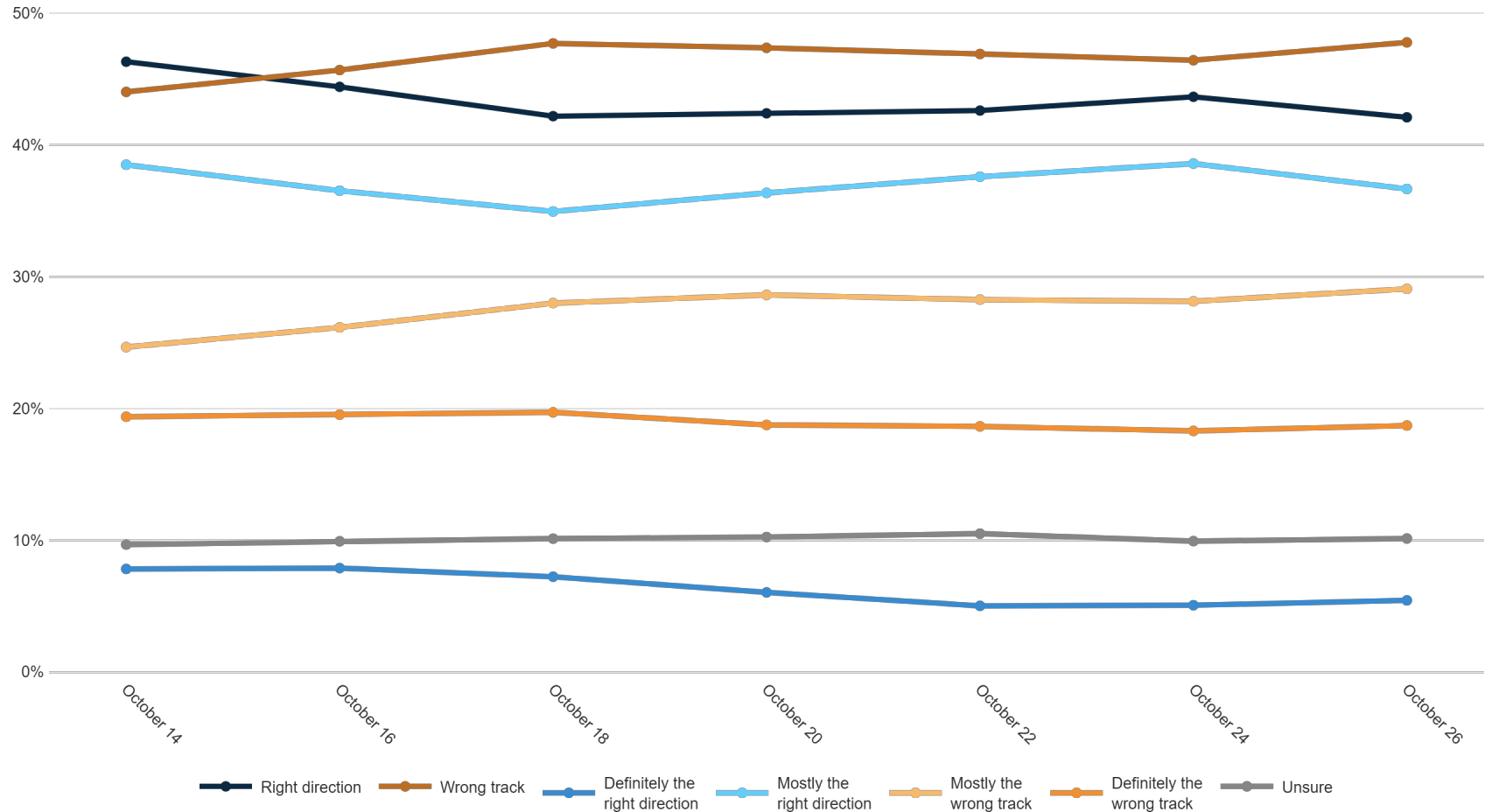


	F 18-34	F 35-49	F 50-64	F 65+	M 18-34	M 35-49	M 50-64	M 65+	Dayton/NW OH	Cincinnati	Columbus/C OH	Cleveland/Akron	Republican	Democrat	Unaffiliated	White	Black	Minorities	F College	F No College	M College	M No College	<\$70k	\$70k+	Generic Undec	US Sen Undec	Gov Undec	Trump '20	Biden '20	Always Votes	Usually Votes	Smtms Votes	Rarely Votes
Right direction	33%	26%	33%	45%	49%	40%	51%	56%	42%	49%	44%	38%	54%	32%	35%	43%	36%	41%	32%	38%	47%	52%	40%	44%	32%	29%	25%	51%	32%	45%	37%	37%	34%
Wrong track	55%	62%	56%	41%	40%	55%	42%	37%	42%	43%	49%	51%	36%	58%	55%	47%	50%	43%	58%	48%	48%	39%	48%	50%	46%	48%	57%	39%	59%	47%	50%	49%	49%
Definitely the right direction	8%	5%	2%	5%	9%	5%	5%	7%	4%	5%	6%	6%	6%	6%	3%	5%	9%	4%	4%	5%	7%	6%	4%	7%	2%	1%	3%	6%	5%	5%	5%	10%	8%
Mostly the right direction	25%	21%	31%	40%	40%	34%	46%	49%	38%	45%	38%	33%	48%	26%	32%	38%	27%	37%	28%	33%	40%	46%	35%	37%	30%	28%	22%	45%	27%	40%	32%	27%	26%
Mostly the wrong track	31%	38%	33%	27%	23%	31%	27%	24%	27%	24%	30%	31%	24%	36%	30%	29%	26%	30%	33%	31%	30%	24%	28%	31%	24%	28%	33%	25%	35%	27%	33%	33%	32%
Definitely the wrong track	24%	25%	23%	14%	17%	24%	15%	13%	15%	19%	18%	21%	12%	23%	25%	18%	24%	13%	26%	18%	18%	16%	20%	18%	23%	20%	24%	14%	25%	20%	17%	16%	17%
Unsure	12%	12%	11%	14%	11%	6%	7%	7%	16%	8%	7%	10%	9%	10%	10%	9%	14%	15%	9%	14%	5%	8%	13%	6%	22%	23%	18%	10%	9%	8%	13%	14%	16%

Generally speaking, would you say things in Ohio are headed in the right direction or off on the wrong track?



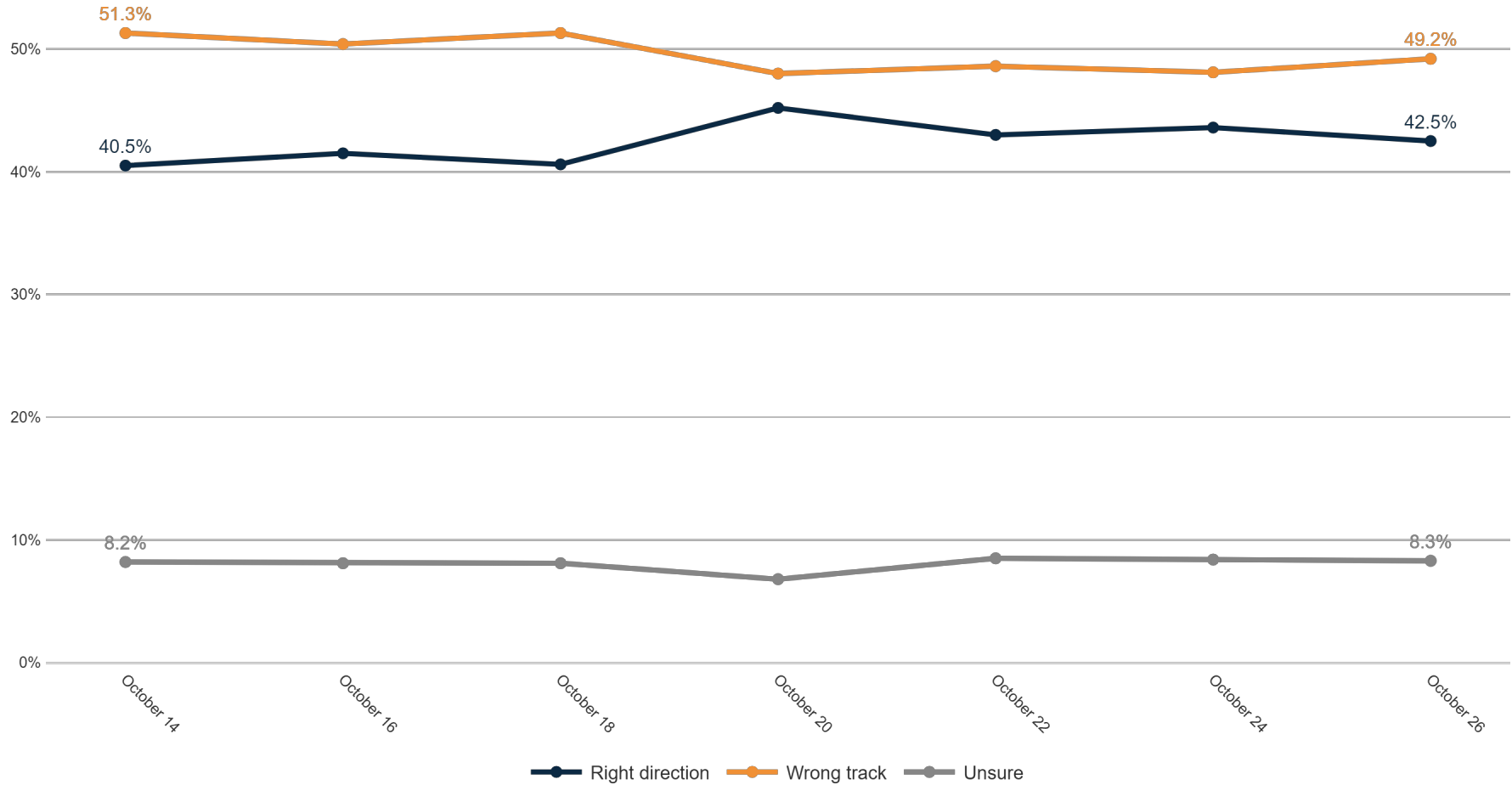
Trend: OH Right Direction/ Wrong Track



MRP Estimates: OH RD/WT

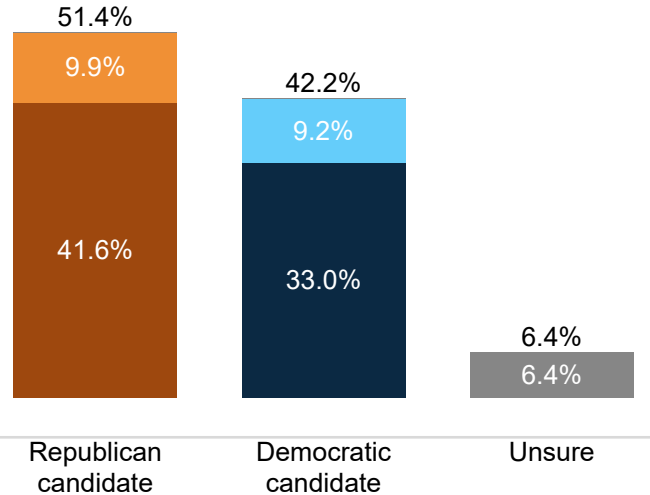
Voter Group

Columbus OH



Generic Ballot

Fielding Date **October 26**

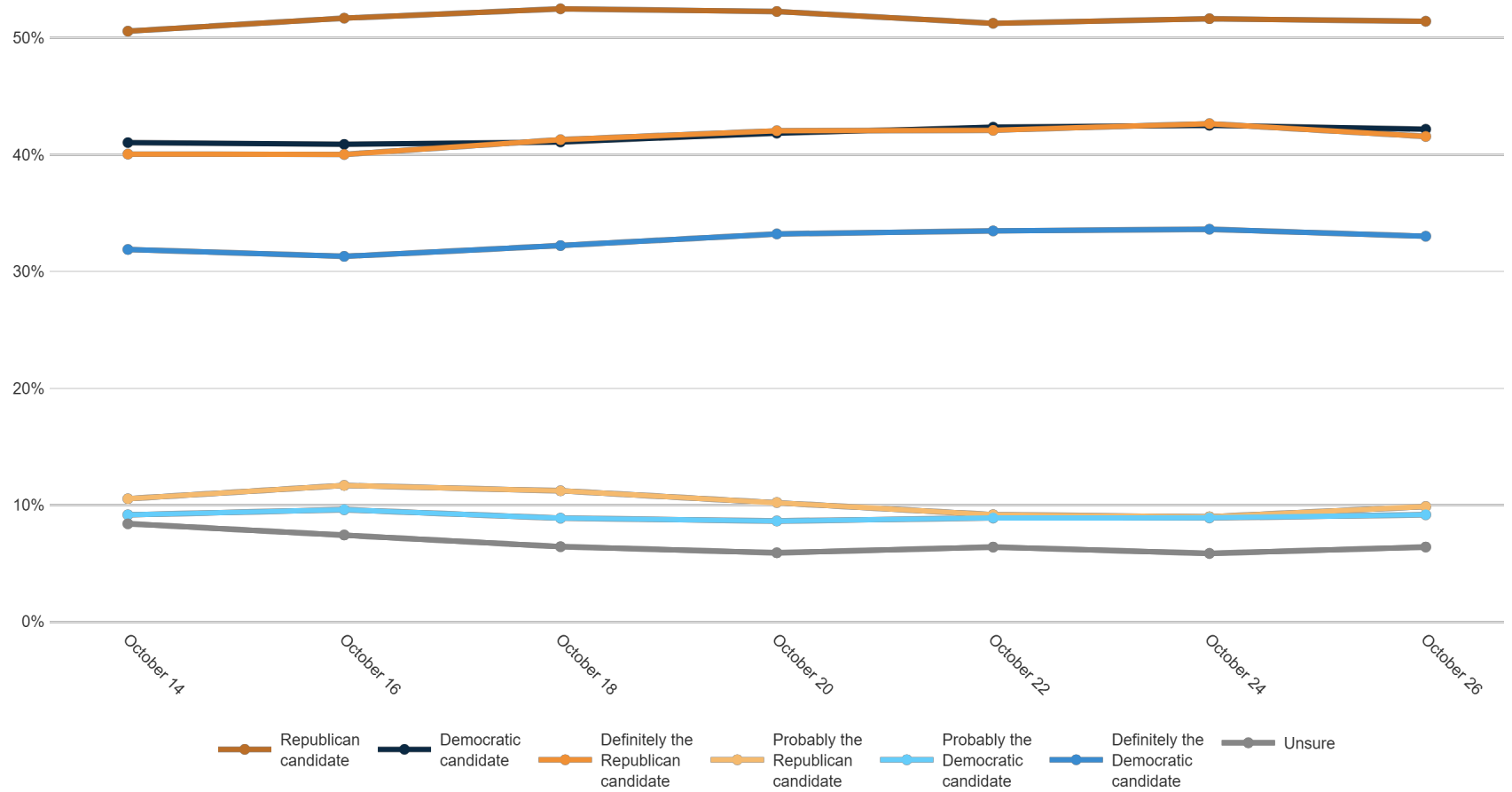


	F 18 - 34	F 35 - 49	F 50 - 64	F 65+	M 18 - 34	M 35 - 49	M 50 - 64	M 65+	Dayton/NW OH	Cincinnati	Columbus/C OH	Cleveland/Akron	Republican	Democrat	Unaffiliated	White	Black	Minorities	F College	F No College	M College	M No College	<\$70k	\$70k+	US Sen Undec	Gov Undec	Trump '20	Biden '20	Always Votes	Usually Votes	Sometimes Votes	Rarely Votes
Republican candidate	46%	38%	48%	51%	44%	52%	61%	64%	53%	59%	52%	48%	93%	4%	43%	55%	22%	61%	39%	52%	50%	62%	49%	52%	33%	39%	90%	7%	53%	53%	36%	40%
Democratic candidate	47%	54%	45%	43%	47%	41%	35%	32%	40%	35%	43%	45%	5%	93%	41%	40%	66%	32%	57%	40%	46%	32%	43%	43%	20%	27%	5%	89%	43%	39%	49%	36%
Definitely the Republican candidate	27%	30%	40%	44%	31%	38%	51%	58%	44%	48%	41%	39%	79%	3%	27%	46%	11%	28%	29%	42%	41%	52%	39%	43%	19%	17%	76%	3%	45%	39%	27%	28%
Probably the Republican candidate	19%	8%	8%	7%	13%	13%	10%	5%	9%	11%	11%	9%	14%	2%	16%	9%	11%	33%	9%	10%	9%	10%	11%	9%	14%	22%	14%	3%	8%	15%	9%	12%
Probably the Democratic candidate	17%	10%	7%	8%	17%	10%	6%	6%	7%	6%	11%	10%	3%	14%	14%	9%	14%	4%	11%	9%	8%	9%	10%	8%	12%	13%	3%	16%	7%	13%	16%	14%
Definitely the Democratic candidate	30%	45%	38%	35%	30%	31%	28%	26%	34%	29%	31%	35%	2%	78%	27%	31%	52%	28%	46%	32%	37%	22%	33%	35%	8%	14%	2%	73%	36%	26%	33%	22%
Unsure	7%	7%	7%	6%	9%	8%	4%	4%	6%	6%	6%	7%	2%	3%	16%	5%	11%	7%	5%	7%	5%	6%	7%	5%	47%	34%	5%	4%	4%	7%	15%	24%

If the election was held today, and you had to make a choice, would you vote for the Republican or Democratic candidate for Congress?



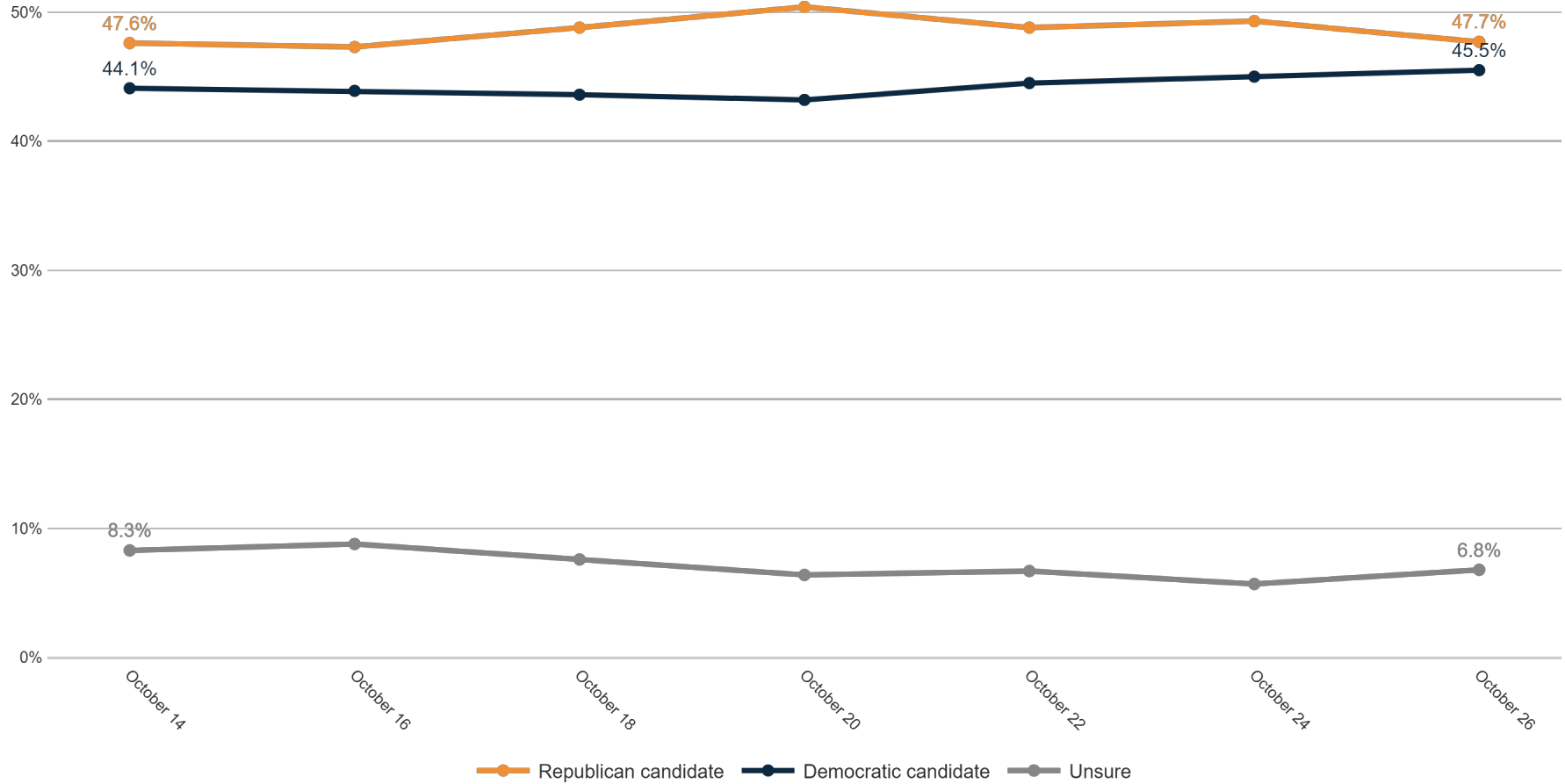
Trend: Generic Ballot



MRP Estimates: Generic Ballot

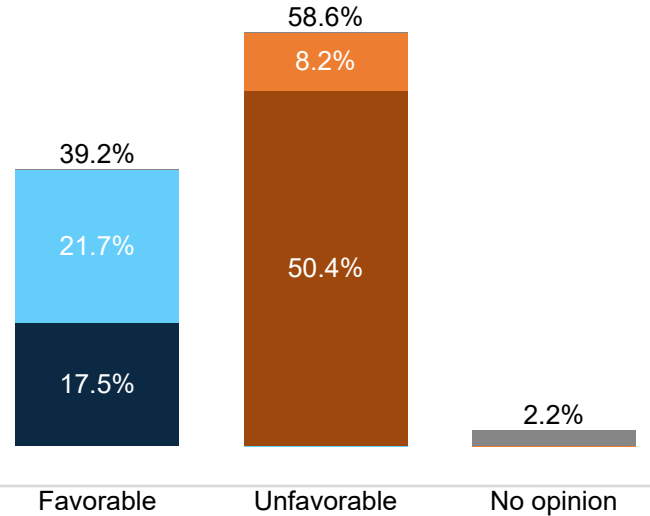
Voter Group

Columbus OH



Biden Image

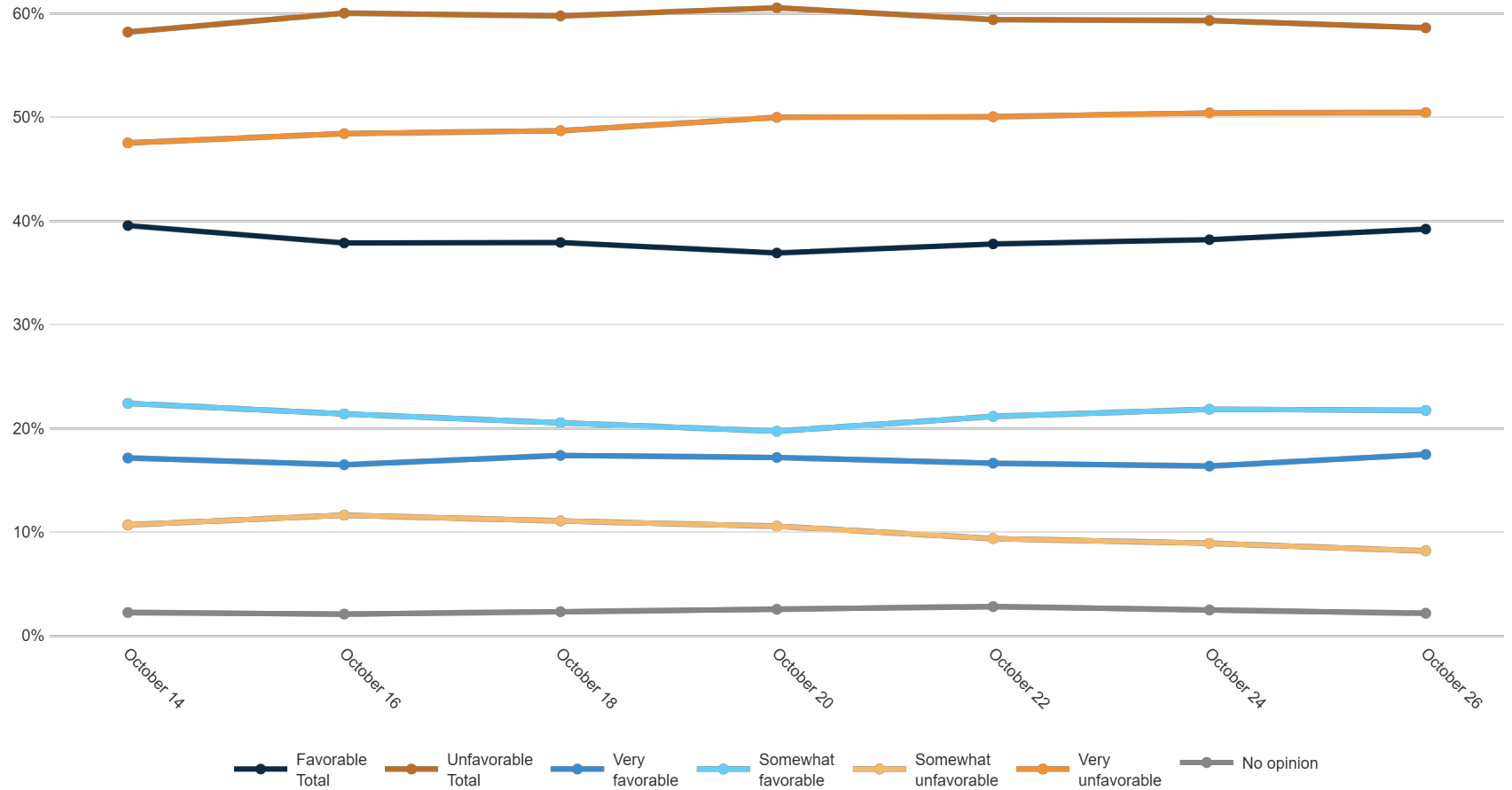
Fielding Date **October 26**



	F 18 - 34	F 35 - 49	F 50 - 64	F 65+	M 18 - 34	M 35 - 49	M 50 - 64	M 65+	Dayton/ NW OH	Cincinnati	Columbus/C OH	Cleveland/Akron	Republican	Democrat	Unaffiliated	White	Black	Minorities	F College	F No College	M College	M No College	<\$70k	\$70k+	Generic Undec	US Sen Undec	Gov Undec	Trump '20	Biden '20	Always Votes	Usually Votes	Smtms Votes	Rarely Votes
Favorable Total	41%	51%	43%	41%	44%	38%	31%	28%	38%	35%	40%	40%	7%	84%	37%	36%	71%	39%	53%	39%	41%	29%	41%	40%	26%	21%	24%	6%	82%	40%	37%	46%	35%
Unfavorable Total	57%	47%	54%	57%	52%	60%	68%	70%	60%	63%	58%	57%	93%	14%	60%	63%	25%	60%	46%	59%	58%	69%	57%	59%	61%	65%	63%	93%	16%	59%	61%	45%	54%
Very favorable	16%	15%	19%	21%	21%	14%	15%	15%	19%	17%	16%	18%	3%	41%	10%	16%	35%	13%	21%	17%	20%	14%	19%	17%	9%	5%	9%	3%	36%	20%	12%	23%	8%
Somewhat favorable	25%	36%	24%	20%	23%	24%	15%	13%	19%	18%	24%	22%	4%	43%	27%	20%	36%	26%	32%	21%	21%	16%	22%	23%	17%	16%	15%	3%	46%	20%	25%	24%	27%
Somewhat unfavorable	13%	9%	7%	7%	10%	10%	9%	5%	6%	7%	8%	10%	7%	6%	13%	8%	5%	20%	9%	8%	9%	7%	8%	8%	24%	25%	17%	7%	8%	7%	10%	11%	12%
Very unfavorable	44%	37%	47%	50%	42%	50%	59%	65%	54%	56%	50%	47%	85%	8%	47%	54%	19%	40%	37%	51%	49%	62%	49%	50%	37%	40%	46%	87%	8%	52%	51%	34%	42%
No opinion	2%	2%	2%	2%	4%	2%	2%	2%	2%	2%	1%	3%	1%	2%	3%	2%	5%	1%	1%	2%	1%	2%	2%	1%	14%	14%	13%	1%	2%	1%	2%	9%	11%

Do you have a favorable or unfavorable opinion of Joe Biden?

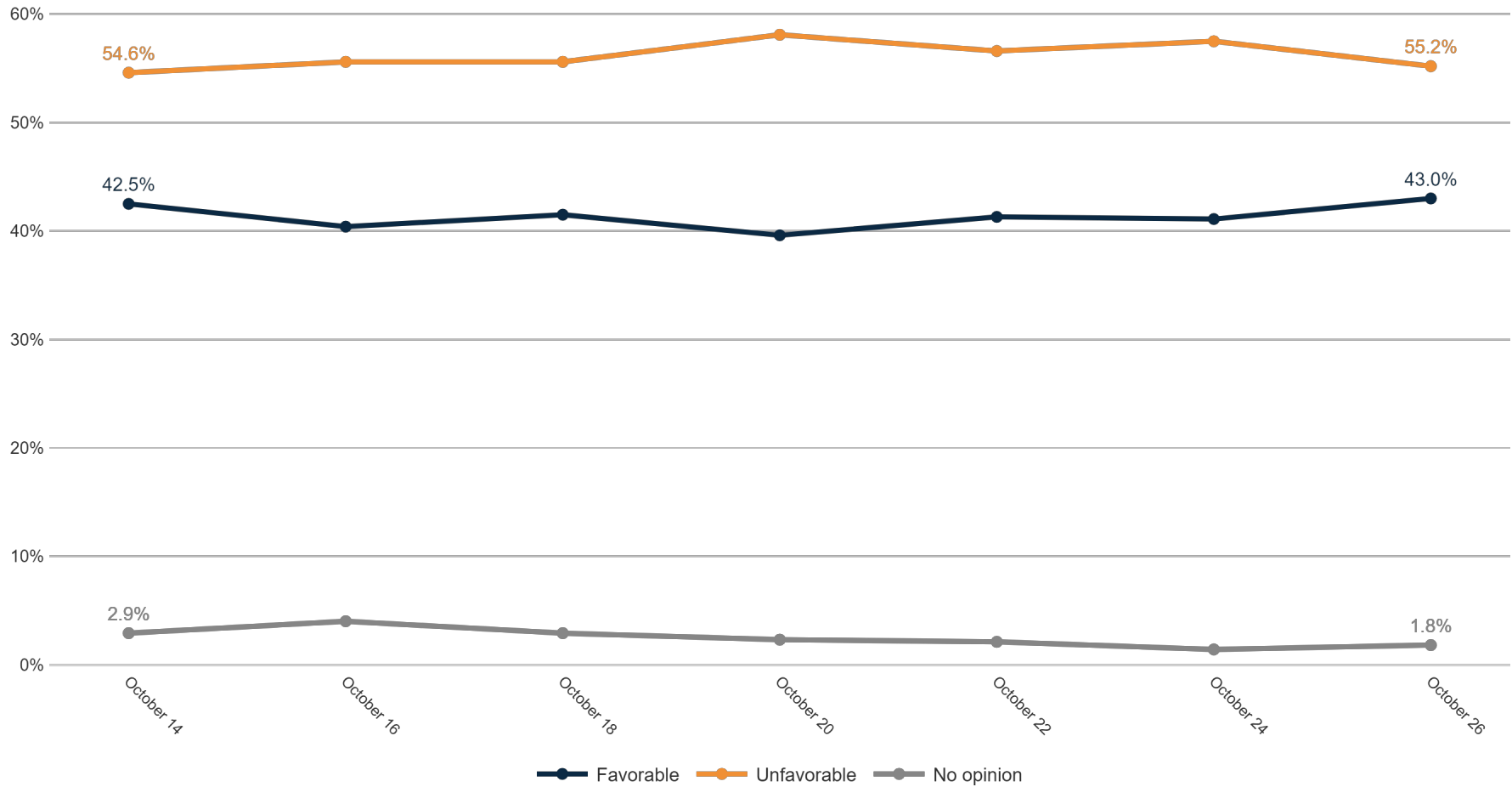
Trend: Biden Image



MRP Estimates: Biden Image

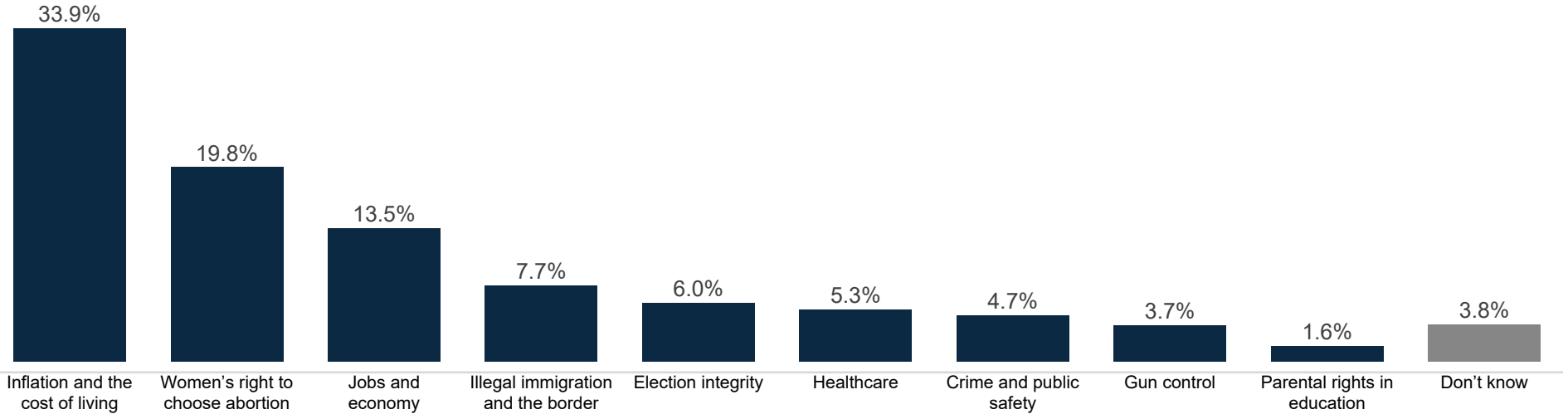
Voter Group

Columbus OH



Top Priority

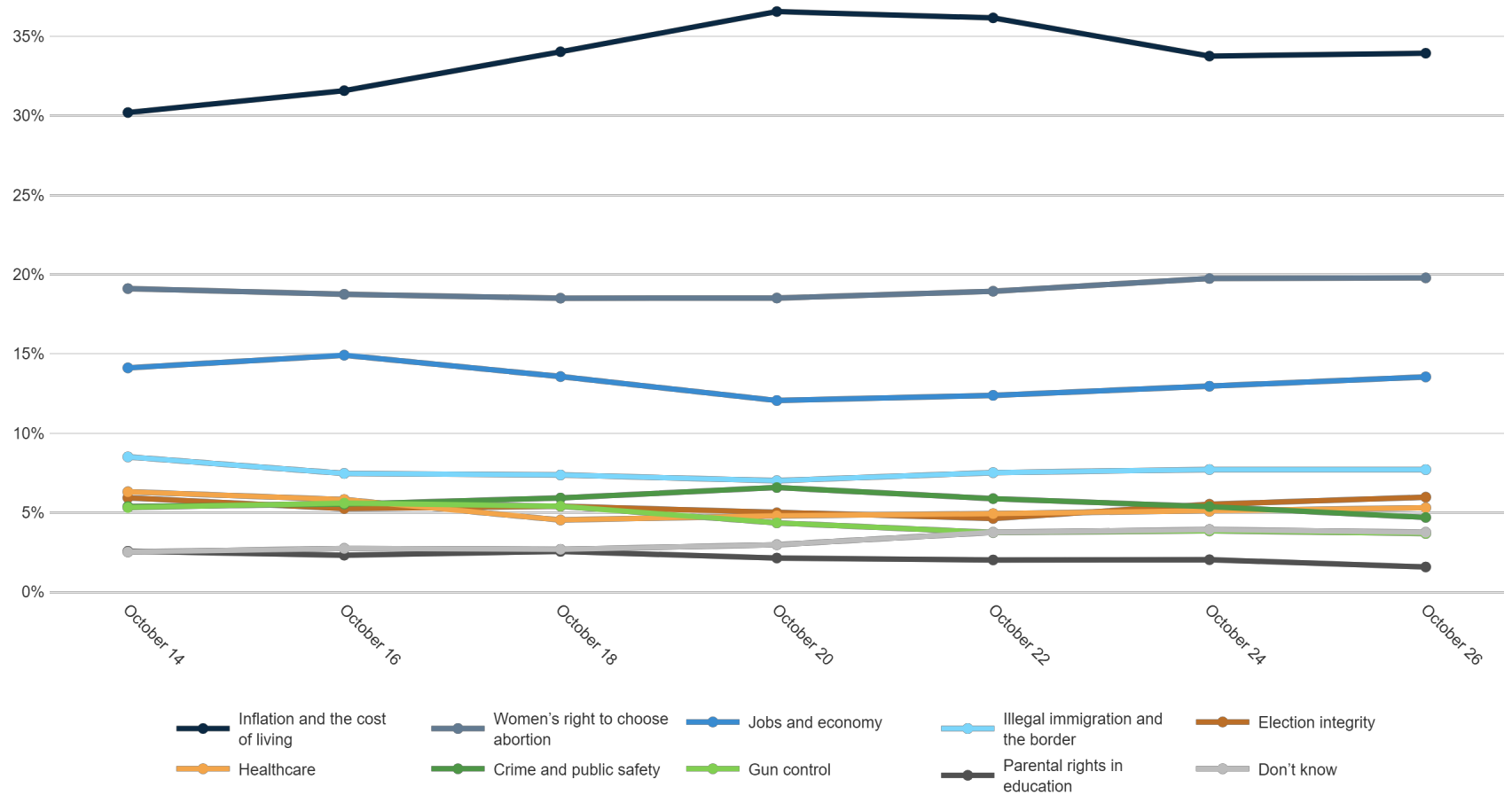
Fielding Date **October 26**



	F 18 - 34	F 35 - 49	F 50 - 64	F 65+	M 18 - 34	M 35 - 49	M 50 - 64	M 65+	Dayton/NW OH	Cincinnati	Columbus/C OH	Cleveland/Akron	Republican	Democrat	Unaffiliated	White	Black	Minorities	F College	F No College	M College	M No College	<\$70k	\$70k+	Generic Undec	US Sen Undec	Gov Undec	Trump '20	Biden '20	Always Votes	Usually Votes	Sometimes Votes	Rarely Votes
Inflation and the cost of living	36%	33%	31%	34%	28%	38%	38%	33%	35%	39%	32%	33%	48%	17%	32%	35%	28%	30%	26%	38%	32%	37%	35%	34%	39%	42%	33%	47%	19%	32%	39%	35%	38%
Women's right to choose abortion	31%	30%	28%	18%	19%	14%	13%	11%	19%	15%	22%	20%	3%	42%	19%	20%	21%	22%	37%	18%	17%	11%	18%	22%	8%	10%	13%	4%	41%	21%	18%	14%	11%
Jobs and economy	8%	13%	11%	11%	19%	17%	20%	12%	15%	15%	14%	12%	16%	10%	16%	13%	10%	17%	11%	11%	16%	18%	12%	15%	16%	14%	12%	16%	11%	13%	14%	11%	20%
Illegal immigration and the border	2%	6%	7%	9%	6%	5%	6%	17%	7%	8%	9%	8%	14%	2%	4%	8%	2%	8%	3%	9%	8%	10%	9%	6%	2%	4%	4%	13%	1%	9%	7%	4%	3%
Election integrity	3%	2%	5%	6%	5%	6%	10%	8%	7%	6%	6%	5%	5%	6%	7%	6%	6%	5%	6%	4%	9%	6%	4%	7%	2%	1%	4%	5%	7%	7%	5%	5%	1%
Healthcare	10%	5%	5%	4%	7%	7%	5%	3%	6%	5%	5%	5%	3%	7%	7%	5%	5%	4%	6%	5%	5%	5%	6%	5%	6%	5%	5%	3%	7%	5%	4%	8%	10%
Crime and public safety	3%	4%	5%	4%	6%	4%	3%	9%	3%	3%	5%	5%	6%	4%	4%	4%	7%	9%	3%	4%	4%	6%	6%	4%	3%	6%	10%	6%	3%	4%	5%	8%	5%
Gun control	1%	6%	2%	6%	3%	5%	3%	2%	3%	3%	3%	5%	1%	7%	4%	3%	9%	5%	3%	5%	3%	3%	5%	3%	3%	0%	1%	1%	7%	4%	4%	4%	1%
Parental rights in education	2%	1%	2%	2%	2%	3%	1%	0%	1%	2%	1%	2%	1%	2%	2%	1%	5%	0%	2%	2%	1%	1%	2%	2%	2%	2%	1%	2%	1%	2%	2%	0%	1%
Don't know	5%	1%	3%	6%	6%	3%	1%	4%	4%	4%	3%	4%	3%	2%	6%	3%	7%	1%	4%	4%	4%	1%	4%	2%	19%	16%	17%	3%	3%	3%	3%	9%	10%

From the following list, which issue is personally most important to you that would decide your vote for government?

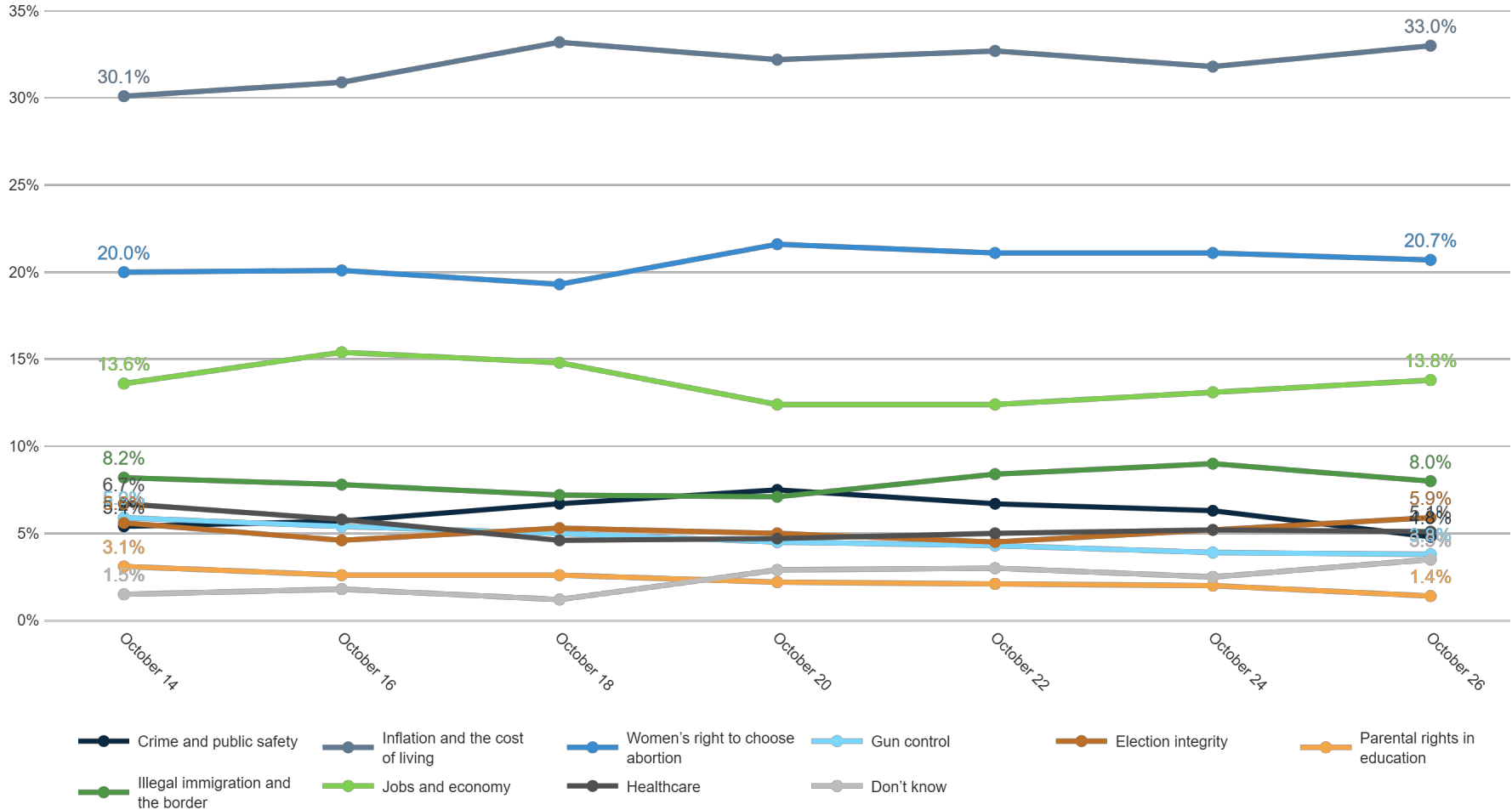
Trend: Top Priority



MRP Estimates: Top Priority

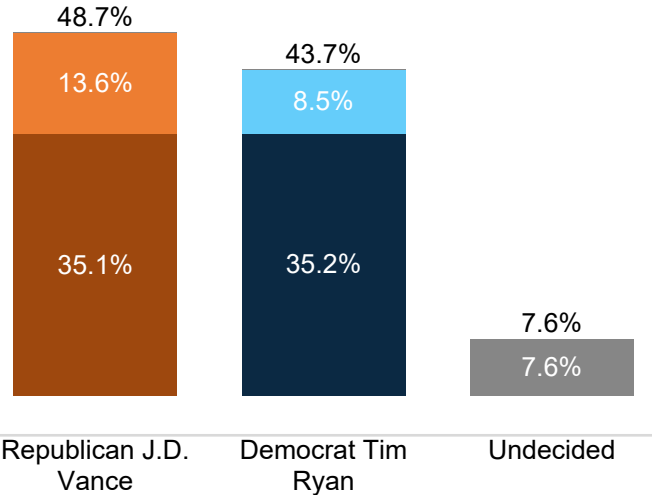
Voter Group

Columbus OH



US Senate Ballot

Fielding Date **October 26**

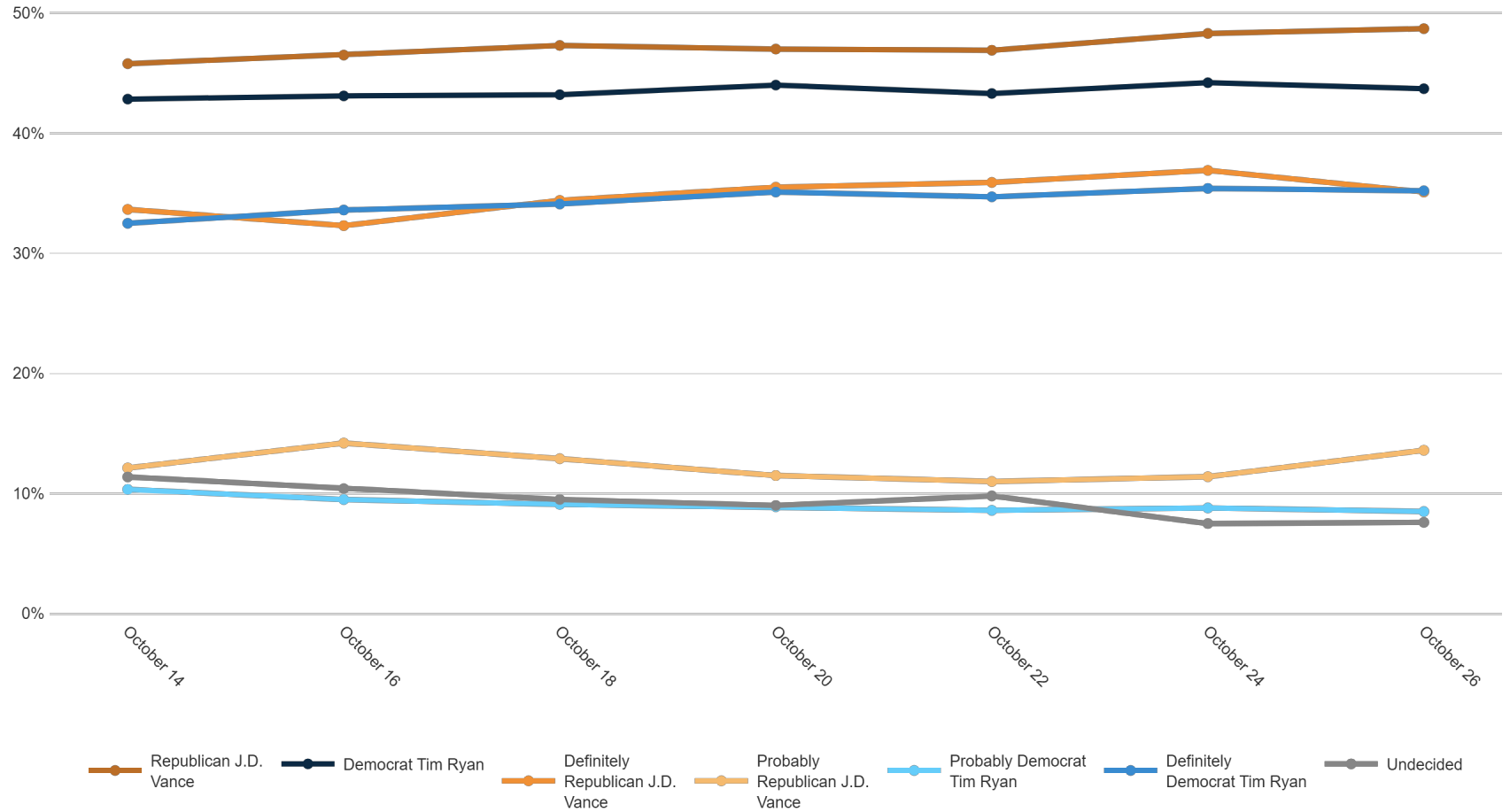


	F 18 - 34	F 35 - 49	F 50 - 64	F 65+	M 18 - 34	M 35 - 49	M 50 - 64	M 65+	Dayton/NW OH	Cincinnati	Columbus/C OH	Cleveland/Akron	Republican	Democrat	Unaffiliated	White	Black	Minorities	F College	F No College	M College	M No College	<\$70k	\$70k+	Generic Undec	Gov Undec	Trump '20	Biden '20	Always Votes	Usually Votes	Smtms Votes	Rarely Votes
Republican J.D. Vance	38%	36%	45%	47%	44%	53%	57%	63%	50%	53%	52%	45%	86%	5%	42%	52%	19%	48%	36%	47%	50%	61%	45%	50%	17%	31%	86%	6%	51%	49%	33%	34%
Democrat Tim Ryan	48%	56%	50%	44%	44%	39%	38%	34%	43%	40%	41%	47%	8%	89%	45%	41%	65%	44%	59%	43%	48%	30%	45%	45%	27%	21%	8%	89%	44%	41%	52%	40%
Definitely Republican J.D. Vance	25%	24%	32%	36%	23%	36%	45%	50%	37%	41%	34%	33%	65%	3%	26%	39%	10%	22%	25%	33%	38%	43%	31%	38%	4%	12%	65%	3%	39%	30%	20%	21%
Probably Republican J.D. Vance	14%	12%	13%	11%	21%	17%	12%	13%	12%	11%	18%	12%	21%	2%	16%	14%	9%	27%	11%	13%	12%	18%	14%	12%	13%	19%	22%	3%	12%	19%	13%	14%
Probably Democrat Tim Ryan	17%	10%	8%	7%	10%	6%	8%	5%	9%	8%	5%	11%	4%	11%	12%	7%	14%	22%	10%	10%	7%	7%	10%	8%	17%	9%	4%	13%	6%	14%	19%	7%
Definitely Democrat Tim Ryan	31%	45%	42%	37%	34%	33%	29%	29%	34%	33%	35%	36%	4%	78%	33%	34%	51%	23%	50%	33%	41%	23%	35%	37%	11%	12%	3%	76%	38%	28%	33%	33%
Undecided	13%	8%	6%	9%	12%	8%	5%	3%	7%	7%	8%	8%	5%	6%	12%	6%	17%	8%	4%	11%	3%	8%	10%	5%	56%	48%	6%	5%	5%	10%	15%	25%

If the general election for U.S. Senate was held today, and you had to make a choice, who would you vote for?



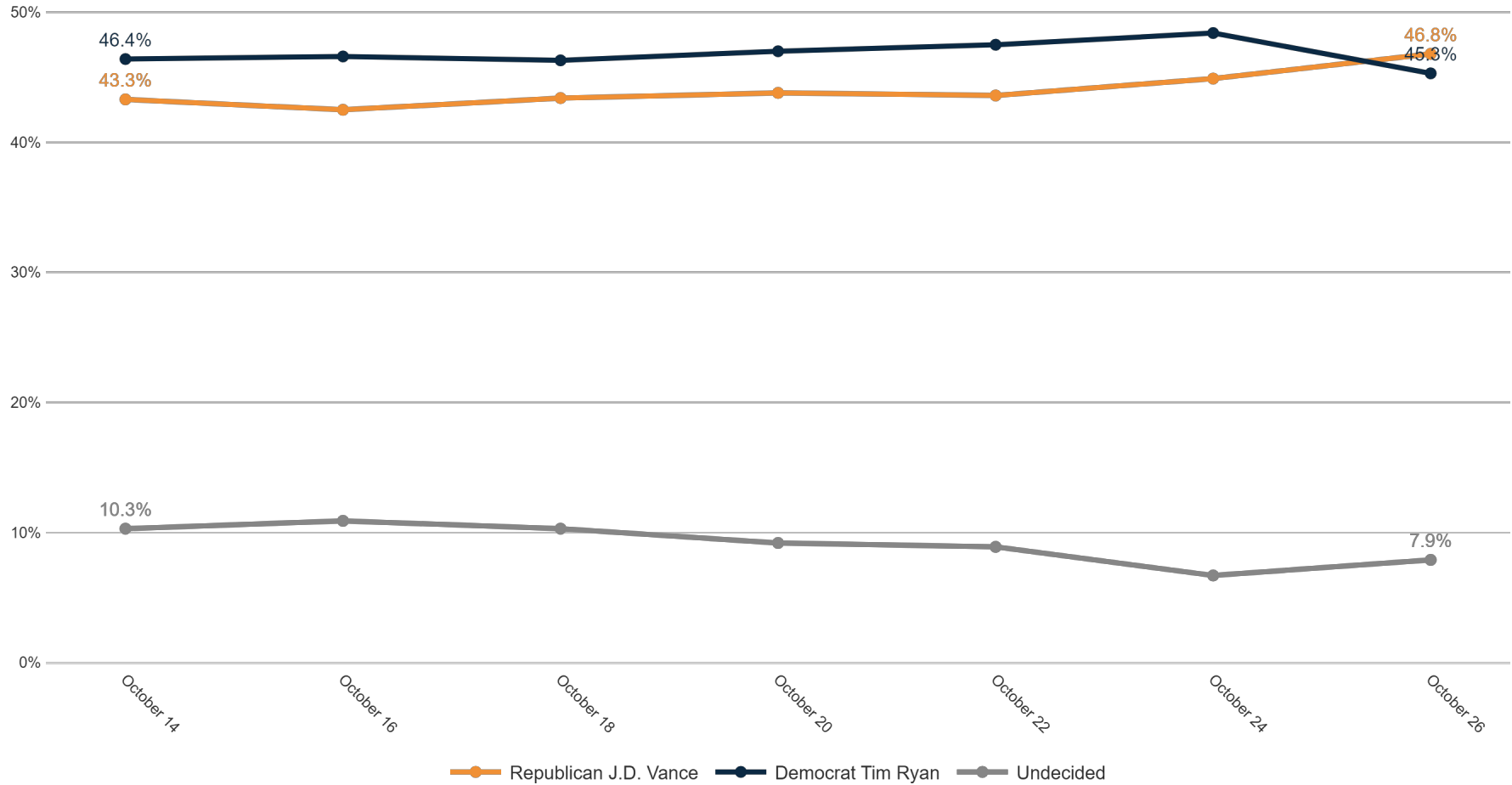
Trend: US Senate Ballot



MRP Estimates: US Senate Ballot

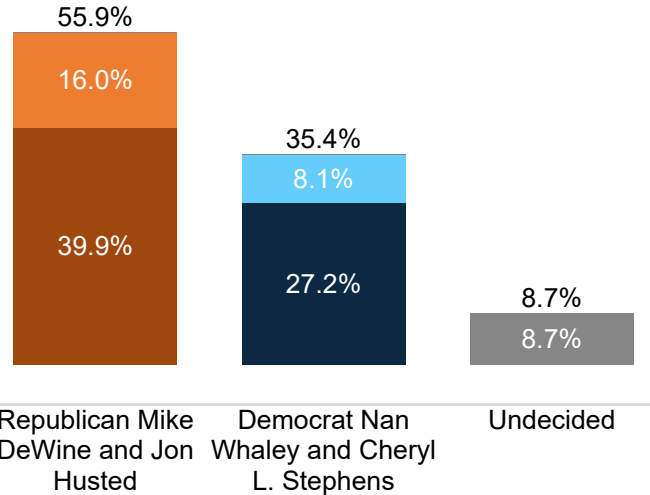
Voter Group

Columbus OH



Governor Ballot

Fielding Date **October 26**

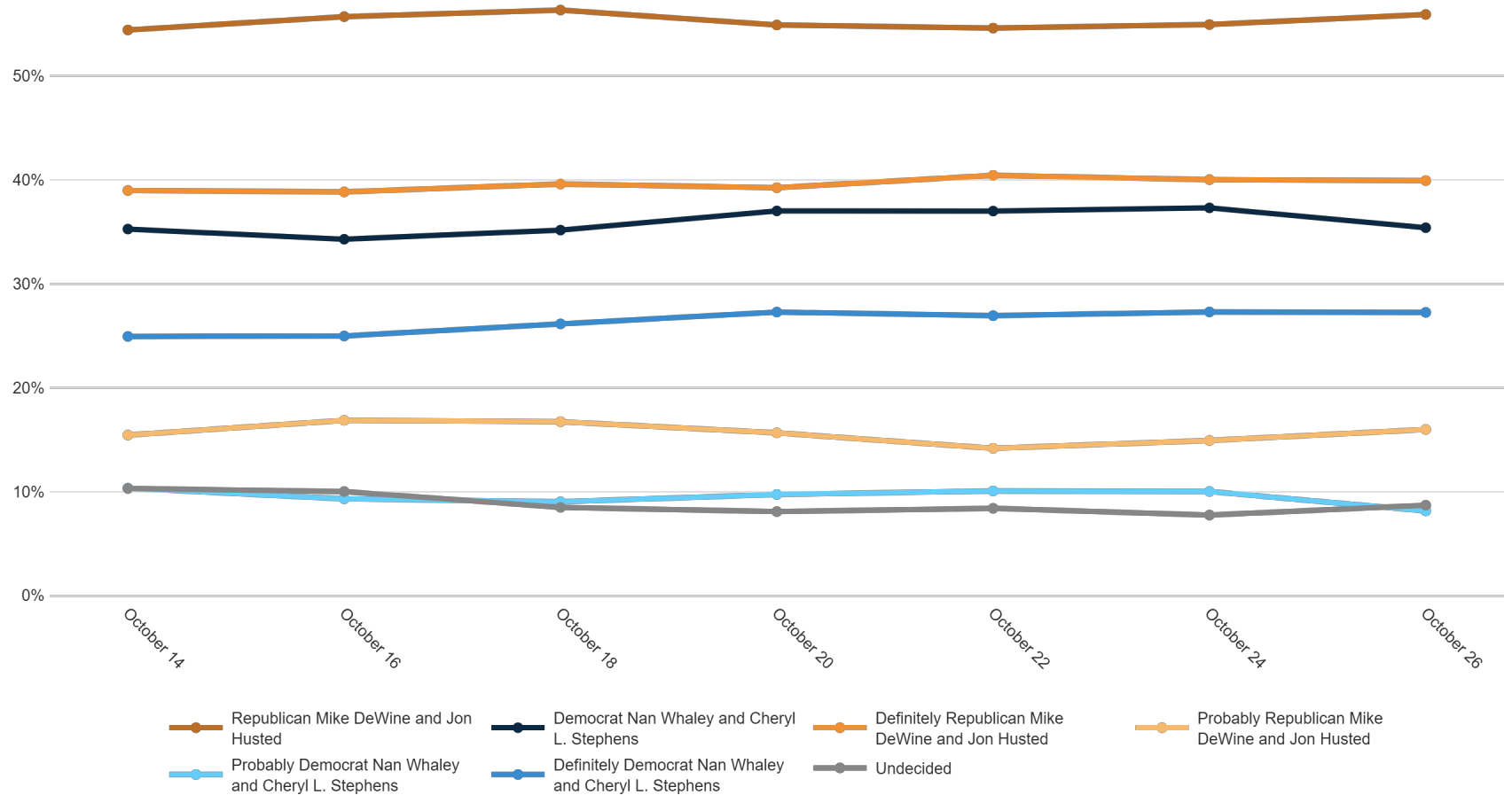


	F 18 - 34	F 35 - 49	F 50 - 64	F 65+	M 18 - 34	M 35 - 49	M 50 - 64	M 65+	Dayton/ NW OH	Cincinnati	Columbus/C OH	Cleveland/Akron	Republican	Democrat	Unaffiliated	White	Black	Minorities	F College	F No College	M College	M No College	<\$70k	\$70k+	Generic Undec	US Sen Undec	Trump '20	Biden '20	Always Votes	Usually Votes	Smtms Votes	Rarely Votes
Republican Mike DeWine and Jon Husted	48%	41%	51%	58%	46%	52%	67%	72%	59%	63%	55%	53%	91%	15%	50%	60%	24%	61%	44%	56%	56%	66%	52%	58%	40%	33%	88%	19%	58%	57%	46%	38%
Democrat Nan Whaley and Cheryl L. Stephens	38%	47%	41%	36%	43%	35%	26%	23%	33%	31%	36%	37%	3%	79%	35%	33%	57%	32%	50%	34%	37%	25%	38%	35%	13%	12%	4%	75%	37%	32%	34%	32%
Definitely Republican Mike DeWine and Jon Husted	25%	29%	36%	47%	23%	35%	49%	58%	41%	45%	41%	37%	70%	7%	32%	44%	15%	26%	31%	40%	42%	47%	36%	43%	21%	19%	66%	11%	44%	34%	30%	16%
Probably Republican Mike DeWine and Jon Husted	23%	12%	15%	12%	23%	17%	18%	14%	17%	18%	14%	16%	22%	8%	18%	16%	8%	34%	12%	16%	14%	20%	16%	15%	20%	14%	22%	8%	13%	22%	16%	22%
Probably Democrat Nan Whaley and Cheryl L. Stephens	9%	9%	9%	9%	16%	8%	4%	5%	7%	6%	11%	8%	2%	14%	11%	7%	13%	11%	9%	9%	7%	8%	11%	6%	8%	8%	3%	14%	6%	11%	16%	10%
Definitely Democrat Nan Whaley and Cheryl L. Stephens	29%	38%	32%	27%	26%	27%	22%	18%	27%	25%	26%	29%	1%	65%	24%	26%	44%	22%	41%	25%	30%	18%	27%	29%	5%	4%	1%	62%	30%	21%	17%	22%
Undecided	14%	11%	8%	6%	12%	13%	7%	5%	8%	6%	8%	10%	6%	6%	15%	7%	19%	7%	7%	10%	7%	8%	10%	7%	47%	55%	8%	6%	6%	11%	20%	30%

If the general election for Governor was held today, and you had to make a choice, who would you vote for?



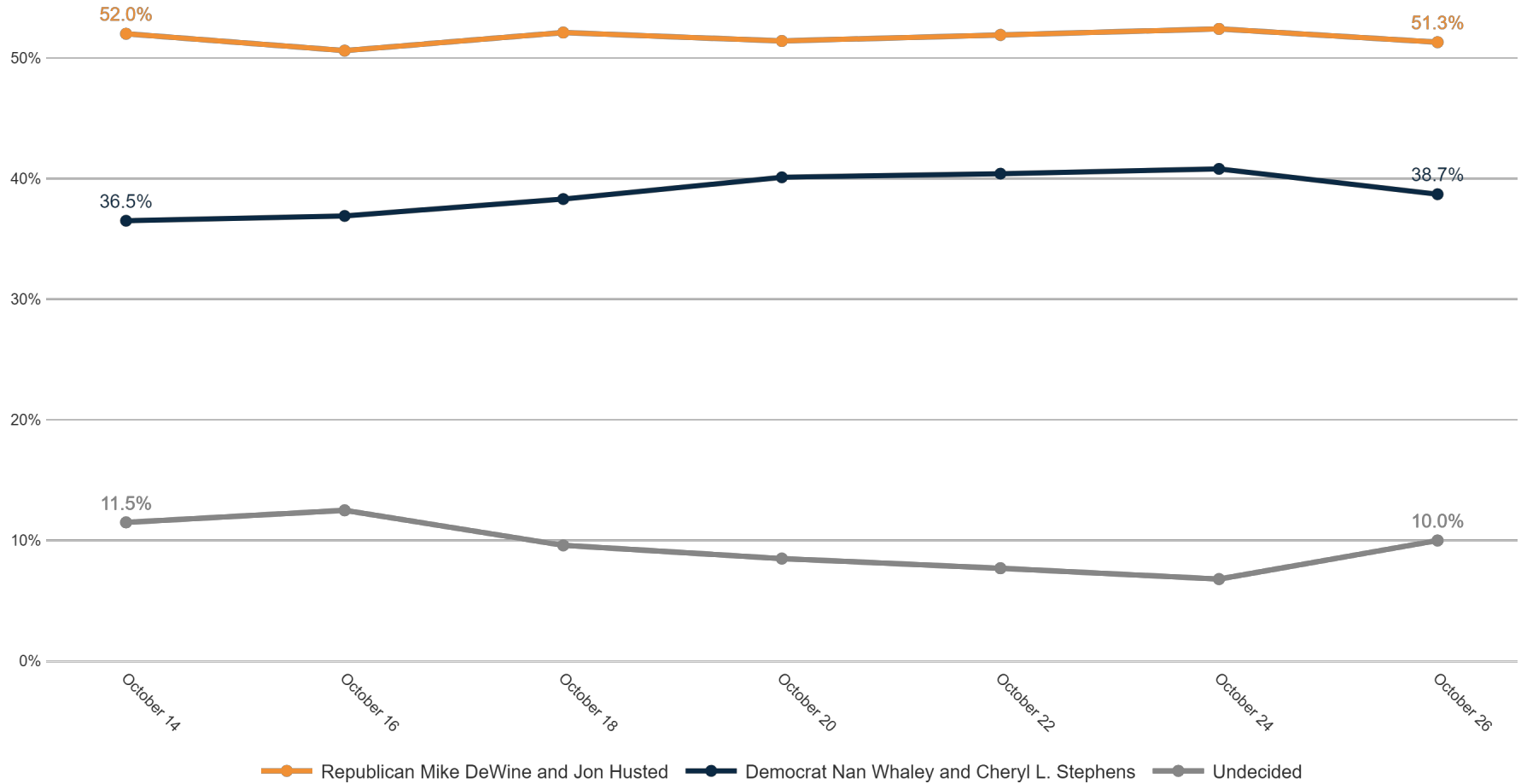
Trend: Governor Ballot



MRP Estimates: Gov Ballot

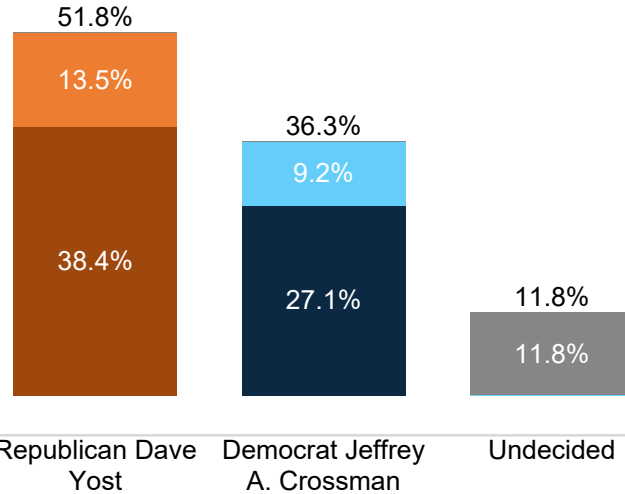
Voter Group

Columbus OH



Attorney General Ballot

Fielding Date **October 26**

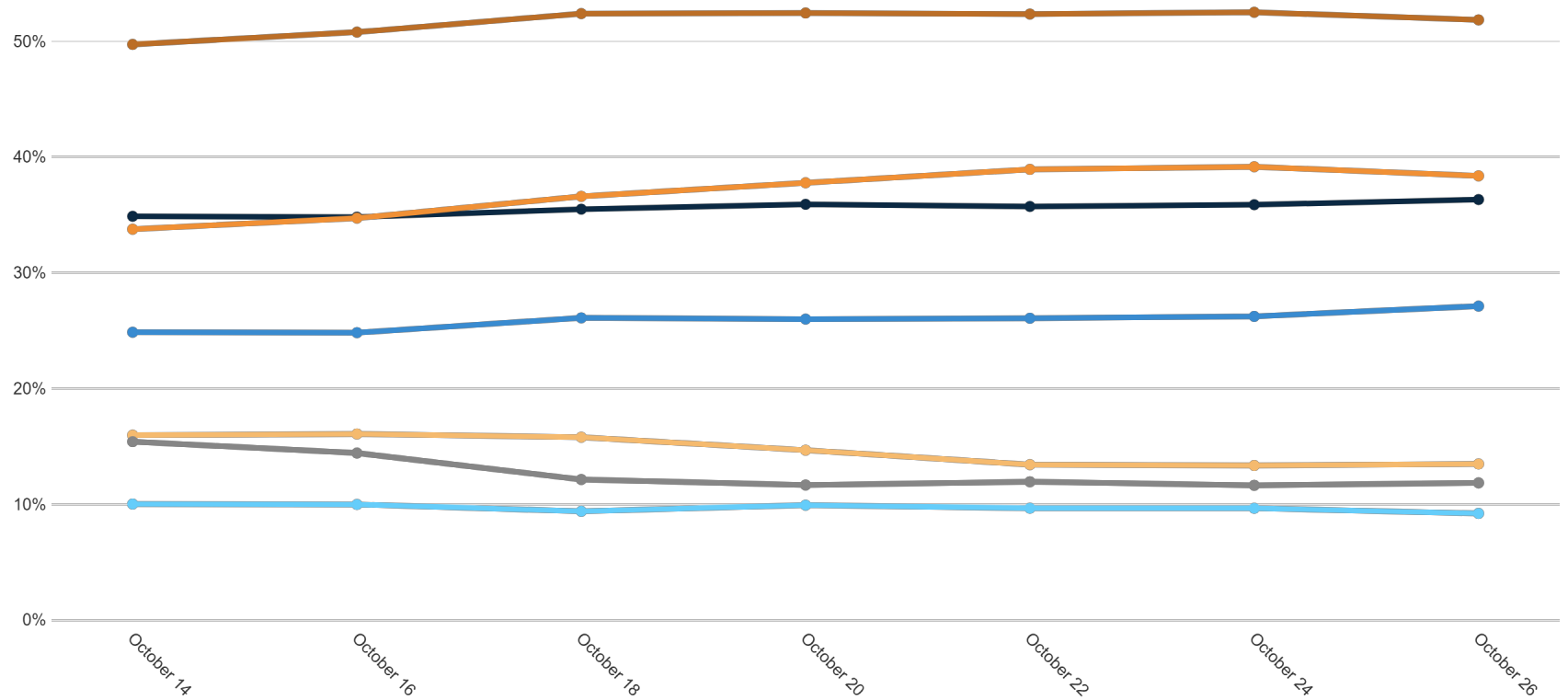


	F 18 - 34	F 35 - 49	F 50 - 64	F 65+	M 18 - 34	M 35 - 49	M 50 - 64	M 65+	Dayton/NW OH	Cincinnati	Columbus/C OH	Cleveland/Akron	Republican	Democrat	Unaffiliated	White	Black	Minorities	F College	F No College	M College	M No College	<\$70k	\$70k+	Generic Undec	US Sen Undec	Gov Undec	Trump '20	Biden '20	Always Votes	Usually Votes	Smtms Votes	Rarely Votes
Republican Dave Yost	44%	35%	50%	52%	46%	49%	61%	68%	55%	58%	52%	49%	88%	9%	46%	56%	20%	52%	38%	52%	52%	62%	50%	52%	24%	27%	22%	86%	12%	54%	51%	40%	32%
Democrat Jeffrey A. Crossman	40%	49%	39%	37%	42%	36%	29%	24%	35%	29%	37%	39%	5%	82%	31%	34%	60%	41%	52%	34%	38%	26%	36%	38%	14%	7%	11%	4%	77%	38%	31%	44%	33%
Definitely Republican Dave Yost	29%	22%	36%	44%	26%	33%	46%	57%	44%	41%	38%	36%	69%	5%	29%	42%	10%	26%	27%	40%	37%	47%	36%	39%	9%	11%	10%	68%	6%	43%	32%	26%	15%
Probably Republican Dave Yost	15%	13%	14%	9%	20%	16%	15%	12%	11%	17%	14%	13%	19%	4%	17%	14%	10%	25%	11%	13%	15%	15%	14%	13%	15%	16%	12%	18%	7%	11%	19%	14%	17%
Probably Democrat Jeffrey A. Crossman	18%	11%	7%	8%	16%	7%	6%	6%	6%	5%	10%	11%	4%	17%	10%	8%	17%	17%	13%	9%	7%	9%	11%	8%	7%	4%	3%	3%	16%	7%	12%	25%	15%
Definitely Democrat Jeffrey A. Crossman	22%	39%	31%	29%	27%	29%	22%	18%	28%	24%	27%	28%	1%	66%	21%	26%	44%	24%	40%	25%	31%	18%	26%	30%	7%	3%	7%	1%	61%	31%	19%	19%	18%
Undecided	16%	16%	11%	11%	12%	15%	11%	7%	11%	13%	11%	12%	7%	9%	23%	10%	20%	7%	10%	14%	9%	11%	14%	10%	62%	67%	68%	10%	11%	8%	18%	16%	35%

If the general election for Attorney General was held today, and you had to make a choice, who would you vote for?



Trend: Attorney General Ballot

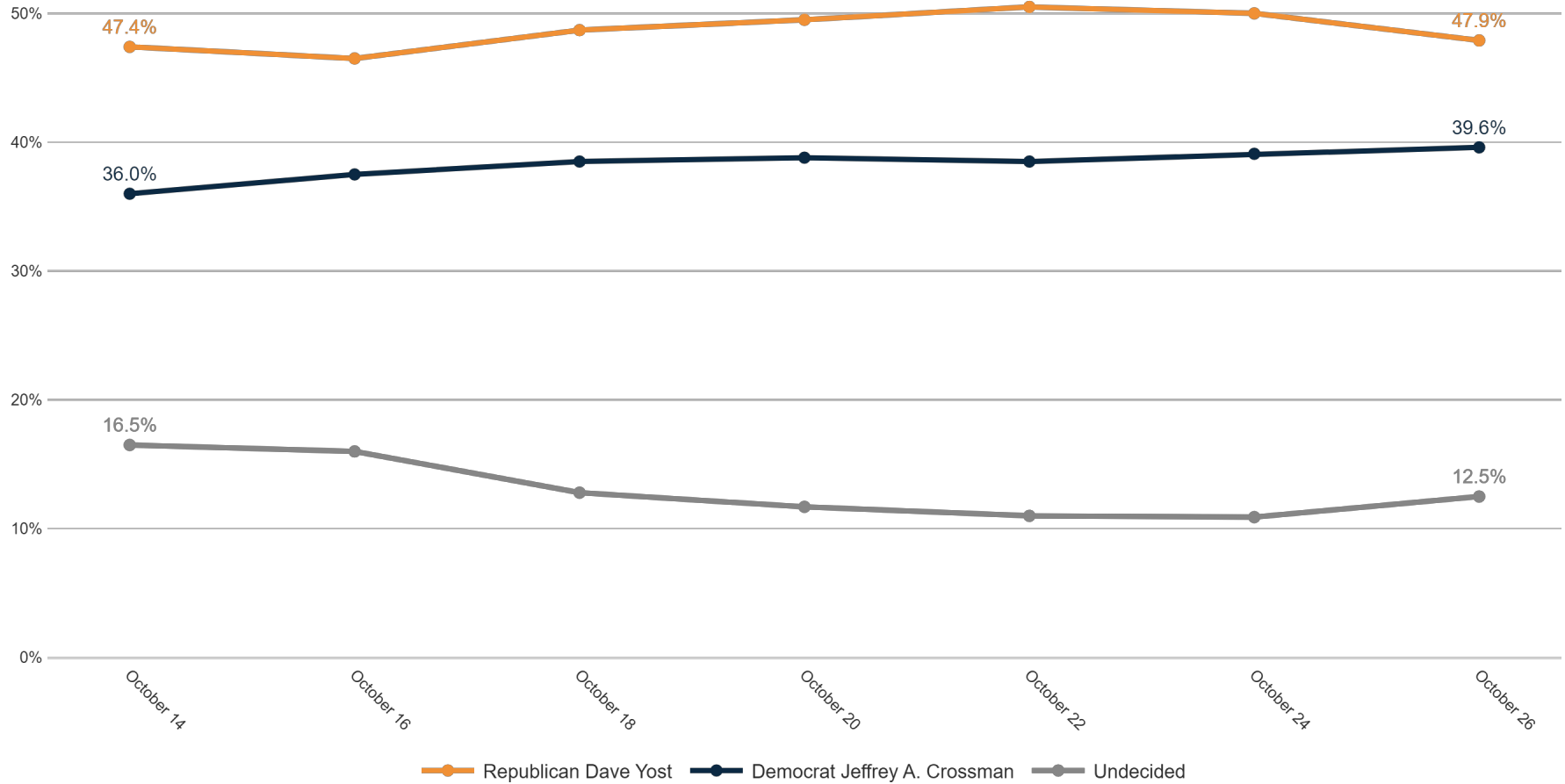


—● Republican Dave Yost
 —● Democrat Jeffrey A. Crossman
 —● Definitely Republican Dave Yost
 —● Probably Republican Dave Yost
 —● Probably Democrat Jeffrey A. Crossman
 —● Definitely Democrat Jeffrey A. Crossman
 —● Undecided

MRP Estimates: AG Ballot

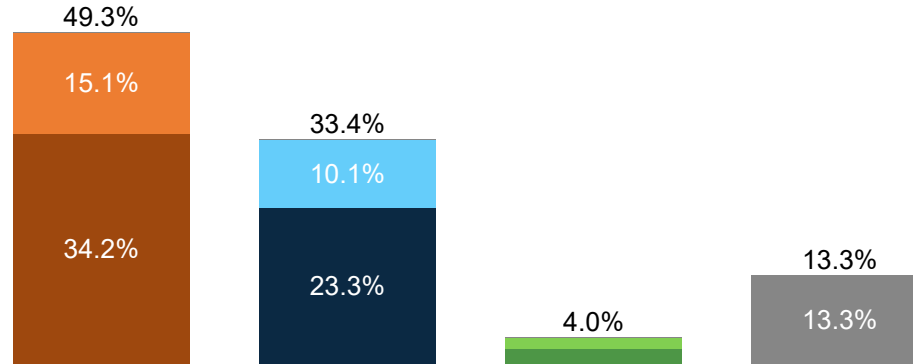
Voter Group

Columbus OH



Secretary of State Ballot

Fielding Date **October 26**



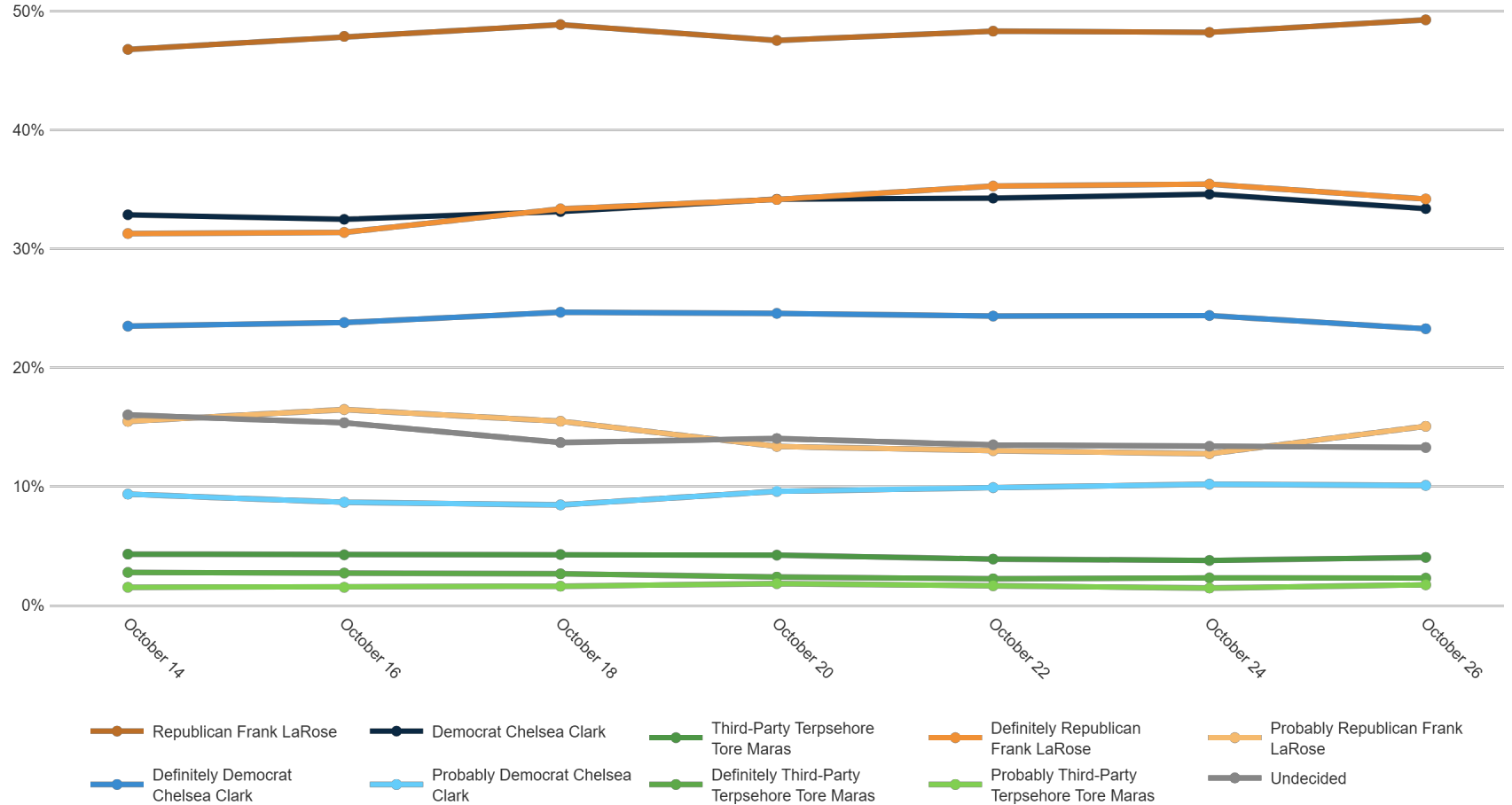
Republican Frank LaRose Democrat Chelsea Clark Third-Party Terpsehore Tore Maras Undecided

	F 18 - 34	F 35 - 49	F 50 - 64	F 65+	M 18 - 34	M 35 - 49	M 50 - 64	M 65+	Dayton/NIW OH	Cincinnati	Columbus/C OH	Cleveland/Akron	Republican	Democrat	Unaffiliated	White	Black	Minorities	F College	F No College	M College	M No College	<\$70k	\$70k+	Generic Undec	US Sen Undec	Gov Undec	Trump '20	Biden '20	Always Votes	Usually Votes	Smtms Votes	Rarely Votes
Republican Frank LaRose	43%	37%	44%	52%	40%	42%	59%	67%	51%	55%	49%	47%	87%	8%	38%	54%	12%	49%	38%	50%	49%	59%	46%	50%	19%	23%	17%	84%	11%	52%	45%	42%	32%
Democrat Chelsea Clark	36%	45%	37%	35%	32%	33%	27%	24%	32%	28%	34%	35%	2%	78%	28%	31%	56%	28%	47%	33%	37%	23%	34%	35%	9%	6%	8%	2%	73%	35%	30%	36%	27%
Third-Party Terpsehore Tore Maras	5%	3%	2%	1%	15%	7%	3%	2%	4%	4%	5%	4%	2%	3%	10%	3%	7%	15%	2%	3%	5%	6%	4%	4%	10%	7%	8%	3%	4%	4%	5%	2%	5%
Definitely Republican Frank LaRose	22%	21%	32%	37%	24%	30%	43%	51%	35%	39%	34%	32%	64%	2%	23%	38%	8%	21%	25%	33%	36%	42%	30%	38%	6%	8%	12%	62%	5%	39%	26%	25%	14%
Probably Republican Frank LaRose	21%	16%	12%	14%	16%	11%	16%	16%	16%	15%	15%	15%	23%	6%	14%	16%	4%	28%	13%	17%	13%	16%	17%	12%	14%	15%	5%	22%	6%	13%	19%	17%	18%
Definitely Democrat Chelsea Clark	22%	30%	28%	24%	23%	22%	19%	17%	25%	21%	23%	24%	1%	57%	17%	23%	33%	13%	35%	21%	28%	14%	22%	25%	2%	2%	4%	1%	53%	26%	19%	13%	15%
Probably Democrat Chelsea Clark	14%	15%	9%	11%	9%	10%	8%	7%	7%	8%	11%	12%	2%	21%	11%	8%	24%	16%	12%	12%	8%	9%	12%	10%	7%	5%	4%	1%	20%	9%	11%	23%	12%
Definitely Third-Party Terpsehore Tore Maras	2%	1%	1%	1%	9%	3%	3%	2%	2%	1%	3%	2%	1%	1%	6%	2%	5%	12%	1%	1%	4%	3%	2%	2%	5%	2%	5%	2%	2%	2%	2%	1%	5%
Probably Third-Party Terpsehore Tore Maras	3%	2%	1%	0%	5%	4%	1%	1%	2%	3%	2%	1%	1%	1%	4%	2%	2%	3%	2%	1%	2%	3%	2%	2%	6%	4%	3%	1%	2%	1%	3%	1%	0%
Undecided	16%	15%	16%	12%	14%	19%	11%	6%	13%	14%	13%	14%	8%	11%	25%	12%	24%	8%	12%	15%	9%	13%	16%	11%	61%	64%	67%	10%	12%	9%	20%	19%	36%

If the general election for Secretary of State was held today, and you had to make a choice, who would you vote for?



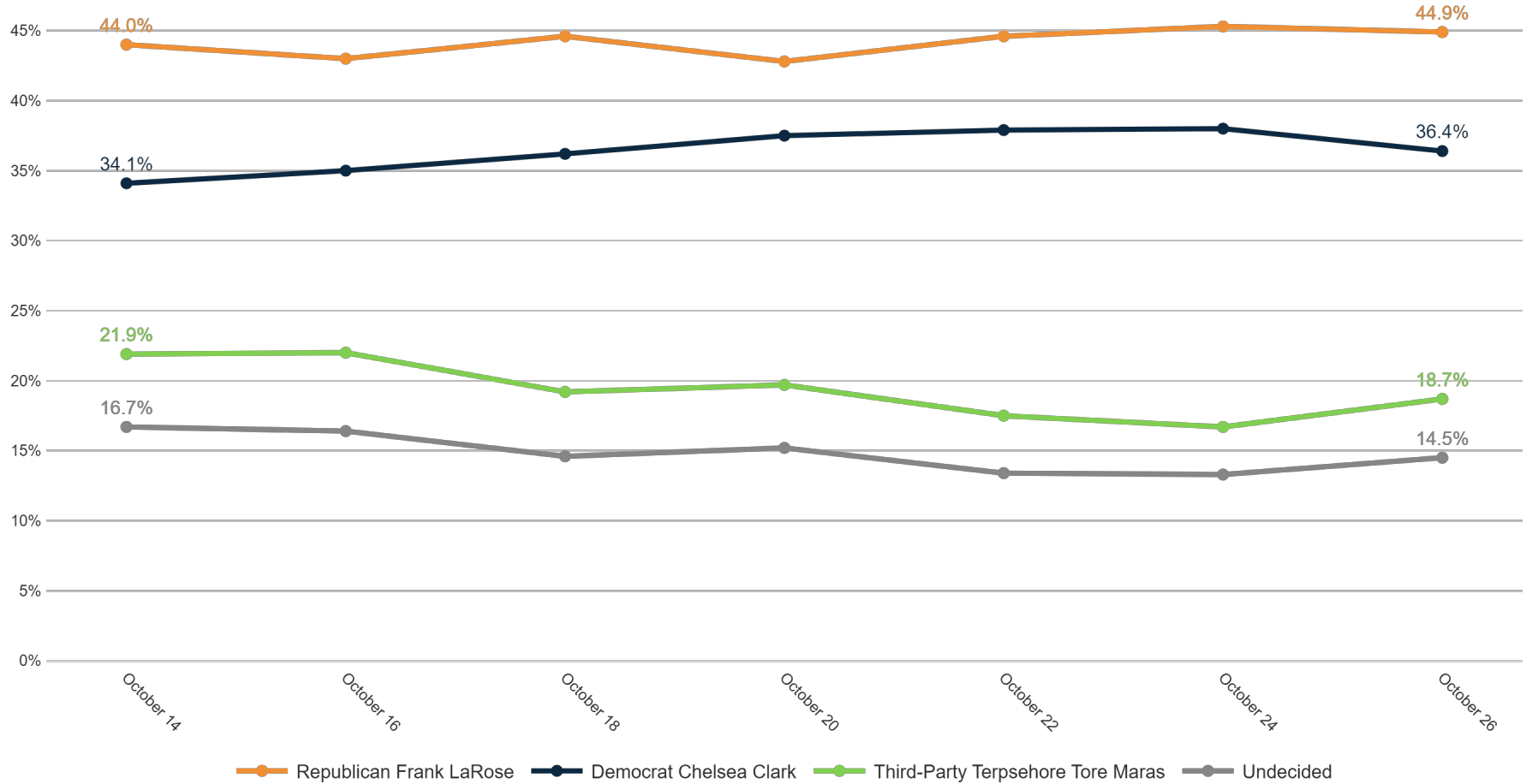
Trend: Secretary of State Ballot



MRP Estimates: SoS Ballot

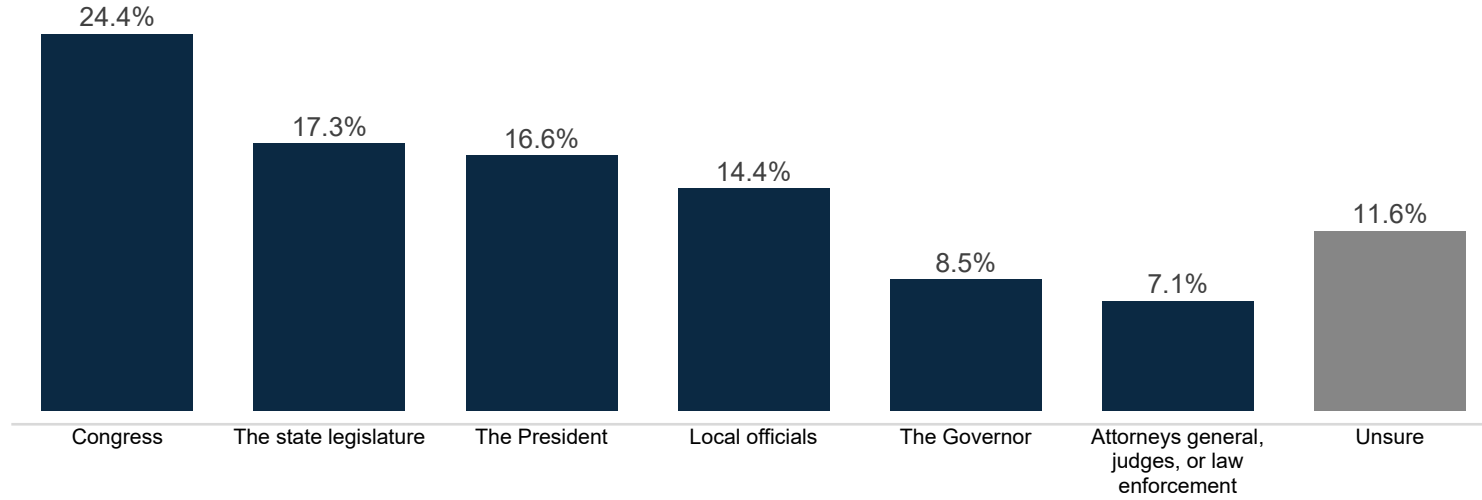
Voter Group

Columbus OH



Level of Government

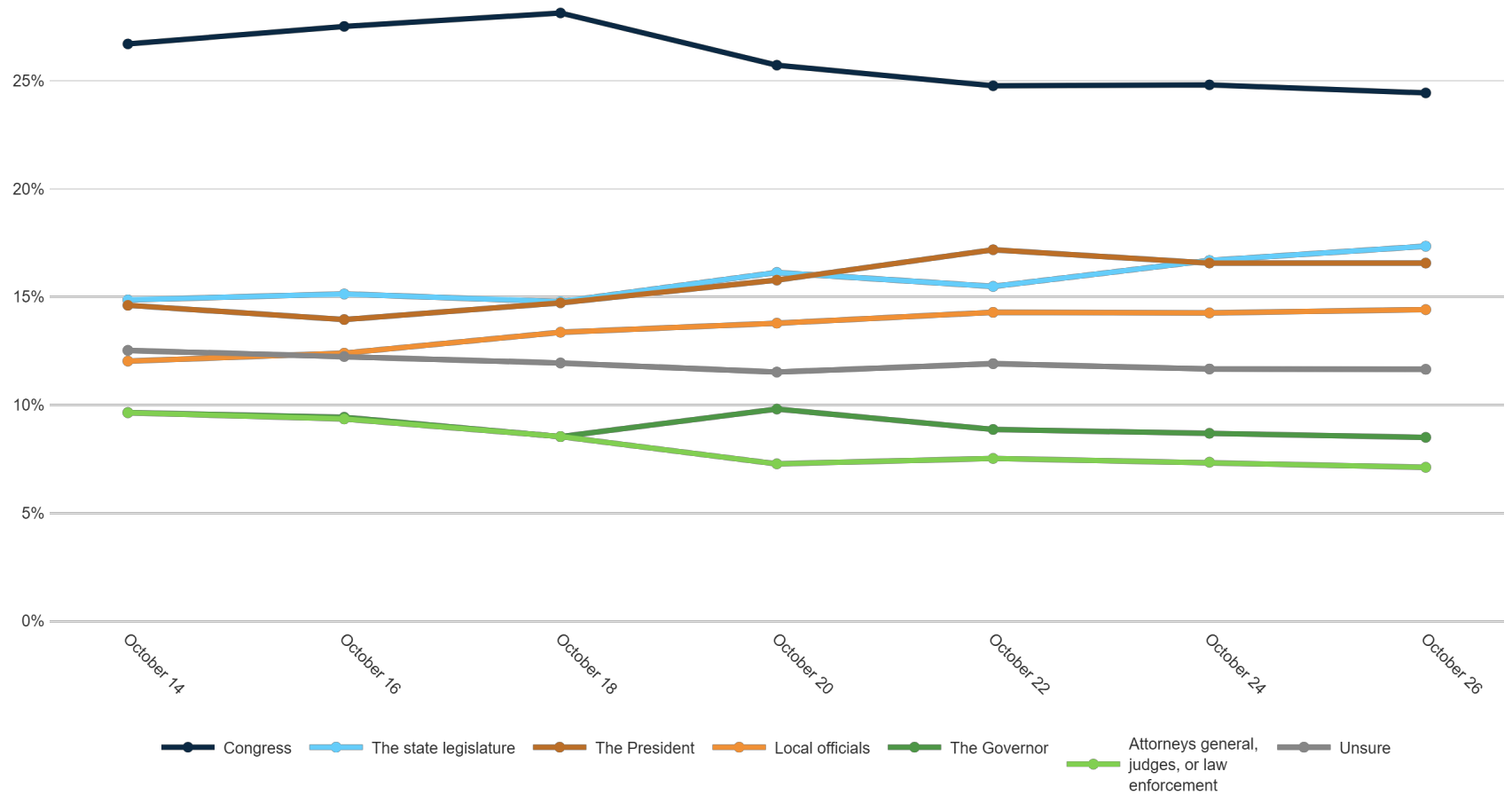
Fielding Date **October 26**



	F 18 - 34	F 35 - 49	F 50 - 64	F 65+	M 18 - 34	M 35 - 49	M 50 - 64	M 65+	Dayton/ NW OH	Cincinnati	Columbus/C OH	Cleveland/Akron	Republican	Democrat	Unaffiliated	White	Black	Minorities	F College	F No College	M College	M No College	<\$70k	\$70k+	Generic Undec	US Sen Undec	Gov Undec	Trump '20	Biden '20	Always Votes	Usually Votes	Smtms Votes	Rarely Votes
Congress	19%	19%	26%	27%	14%	22%	32%	28%	29%	21%	25%	24%	25%	23%	26%	26%	20%	9%	23%	24%	25%	26%	24%	25%	13%	12%	17%	25%	24%	25%	24%	24%	21%
The state legislature	20%	23%	20%	8%	26%	25%	15%	12%	16%	19%	18%	17%	11%	24%	21%	17%	14%	29%	26%	11%	23%	16%	14%	21%	15%	11%	13%	10%	26%	19%	17%	10%	11%
The President	10%	10%	12%	22%	20%	13%	17%	23%	16%	19%	18%	15%	23%	12%	10%	17%	16%	21%	9%	18%	16%	20%	19%	13%	10%	10%	11%	22%	10%	17%	14%	16%	29%
Local officials	14%	19%	11%	13%	16%	15%	19%	10%	13%	11%	15%	16%	14%	14%	15%	14%	17%	10%	16%	13%	14%	16%	14%	16%	16%	16%	16%	16%	13%	15%	14%	6%	19%
The Governor	14%	11%	9%	5%	9%	13%	5%	6%	8%	7%	9%	9%	9%	10%	6%	7%	14%	18%	9%	9%	8%	8%	9%	9%	7%	12%	9%	8%	9%	8%	10%	16%	2%
Attorneys general, judges, or law enforcement	8%	7%	5%	7%	6%	6%	8%	9%	7%	11%	6%	7%	6%	7%	10%	7%	10%	5%	6%	7%	7%	8%	6%	8%	3%	7%	6%	7%	8%	8%	5%	8%	2%
Unsure	14%	10%	16%	19%	8%	5%	5%	11%	12%	13%	9%	13%	11%	10%	12%	12%	9%	7%	11%	18%	6%	7%	14%	7%	36%	31%	27%	12%	10%	9%	16%	20%	17%

What level of government do you believe has the most impact on your day-to-day life?

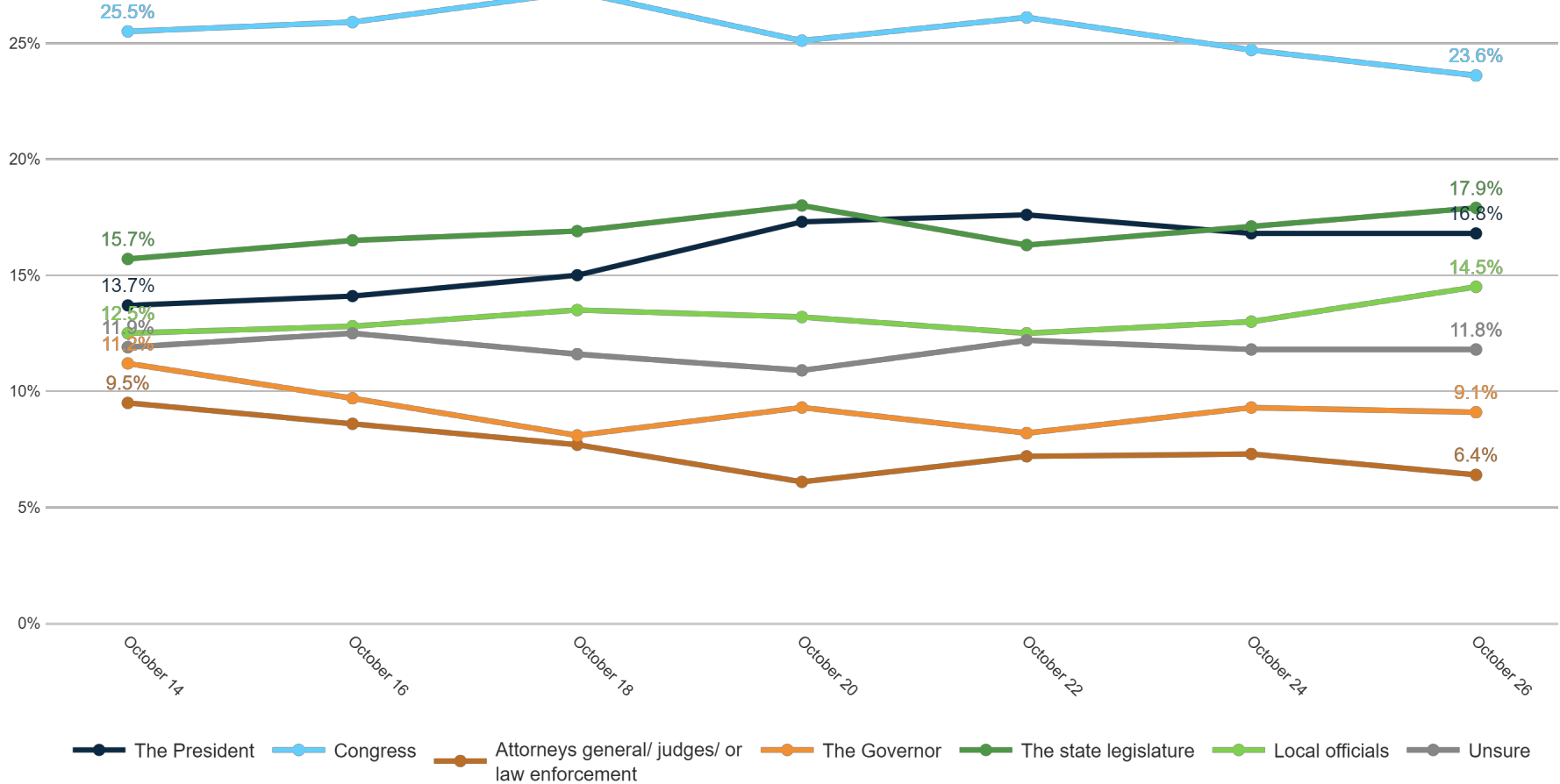
Trend: Level of Government



MRP Estimates: Level of Government

Voter Group

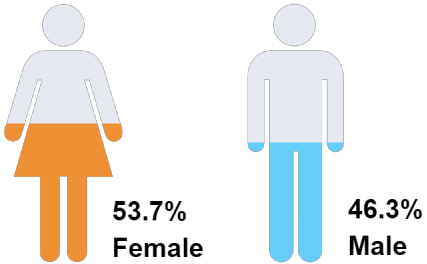
Columbus OH



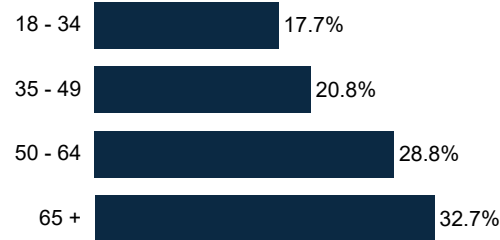
Demographics

Fielding Date **October 26**

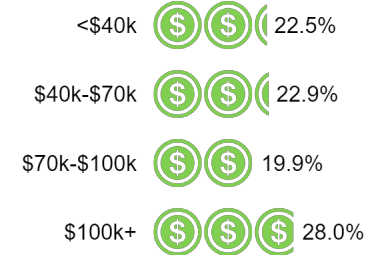
Sex



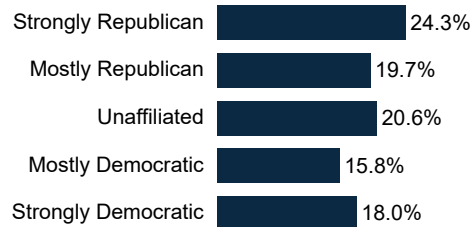
Age Range



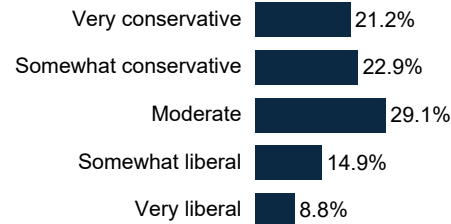
Household Income



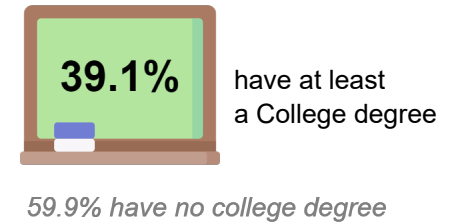
Partisanship



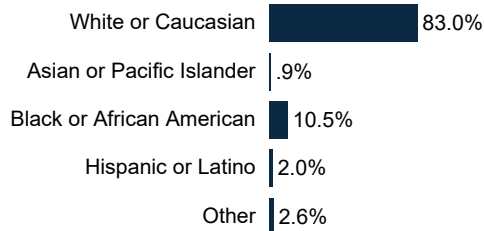
Ideology



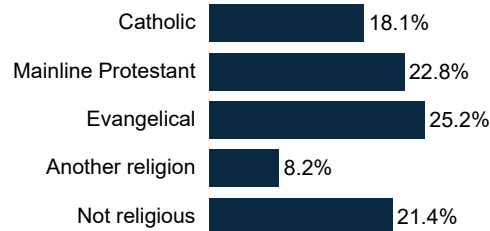
Education



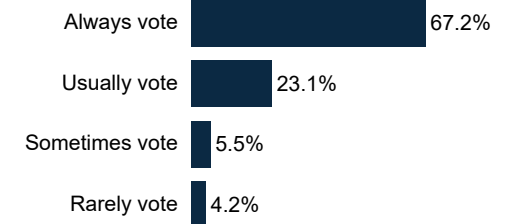
Race/ Ethnicity



Religion



Voter History



Total sample size: 1817