

CYGNAL

Survey of Likely General Election Voters

Michigan Statewide

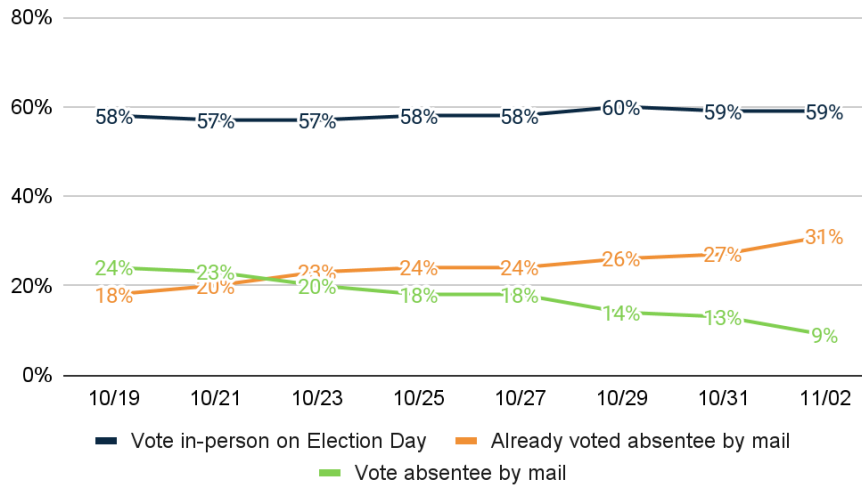
Conducted October 31 – November 2, 2022

n=1754 | $\pm 2.34\%$



Vote Method

1. How do you plan to vote in the November election for Congress, Governor, and local offices?



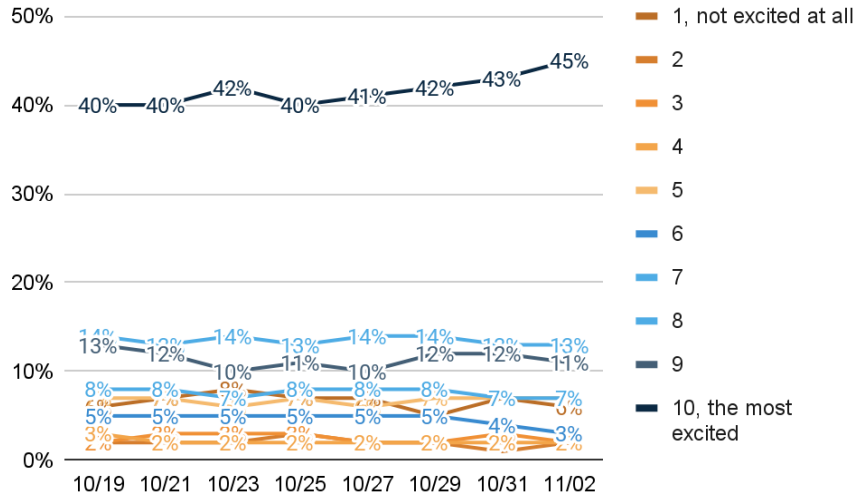
	Freq.	%	10/31/22	10/29/22
<u>Vote in-person on Election Day</u>	<u>1043</u>	<u>59.4%</u>	<u>59.5%</u>	<u>60.3%</u>
Definitely vote in-person on Election Day	922	52.6%	52.1%	53.7%
Probably vote in-person on Election Day	120	6.9%	7.4%	6.6%
<u>Already voted absentee by mail</u>	<u>549</u>	<u>31.3%</u>	<u>27.5%</u>	<u>26.2%</u>
<u>Vote absentee by mail</u>	<u>163</u>	<u>9.3%</u>	<u>13.1%</u>	<u>13.5%</u>
Definitely will vote absentee by mail	134	7.7%	10.7%	11.3%
Probably will vote absentee by mail	28	1.6%	2.3%	2.2%
Total	1754	100.0%	100.0%	100.0%

Enthusiasm

2. How excited are you to vote in the November general election for Governor, Congress, and state legislature on a scale of 1 to 10, with 1 being not excited at all and 10 being very excited?

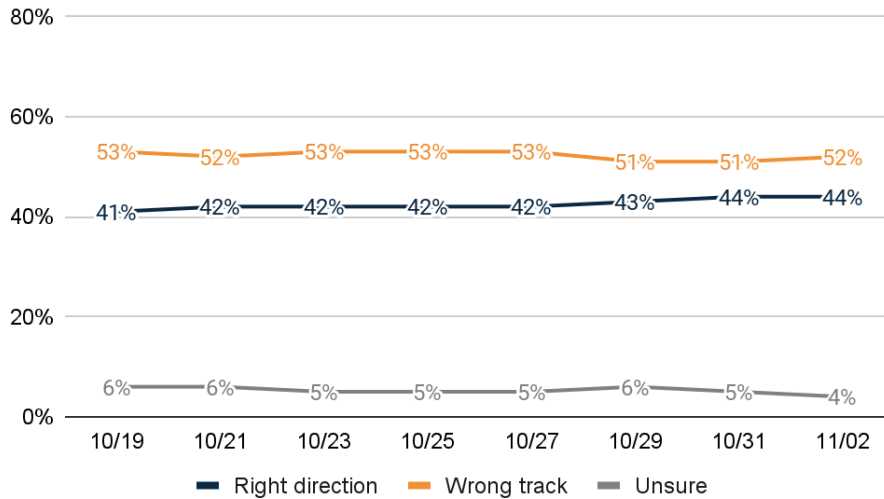
	Freq.	%	10/31/22	10/29/22
1, not excited at all	103	5.9%	6.6%	5.3%
2	32	1.8%	1.2%	1.8%
3	40	2.3%	3.0%	2.1%
4	34	1.9%	1.8%	2.2%
5	114	6.5%	6.9%	7.2%
6	57	3.3%	3.7%	4.7%
7	129	7.4%	7.3%	7.9%
8	220	12.6%	13.0%	14.1%
9	193	11.0%	11.7%	11.9%
10, the most excited	798	45.5%	43.0%	41.8%
Unsure	33	1.9%	1.7%	1.1%
Total	1754	100.0%	100.0%	100.0%





MI RD/WT

3. Generally speaking, would you say things in Michigan are headed in the right direction or off on the wrong track?

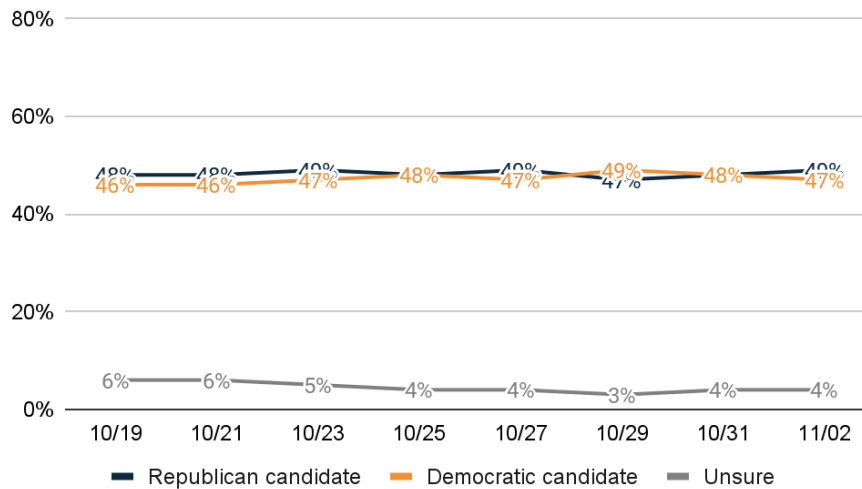


	Freq.	%	10/31/22	10/29/22
Right direction	767	43.7%	44.0%	43.4%
Definitely the right direction	235	13.4%	15.8%	15.9%
Mostly the right direction	532	30.3%	28.1%	27.5%
Wrong track	909	51.8%	50.8%	50.7%
Mostly the wrong track	302	17.2%	19.8%	21.2%
Definitely the wrong track	606	34.6%	31.1%	29.4%
Unsure	79	4.5%	5.2%	5.9%
Total	1754	100.0%	100.0%	100.0%



Generic Congressional Ballot

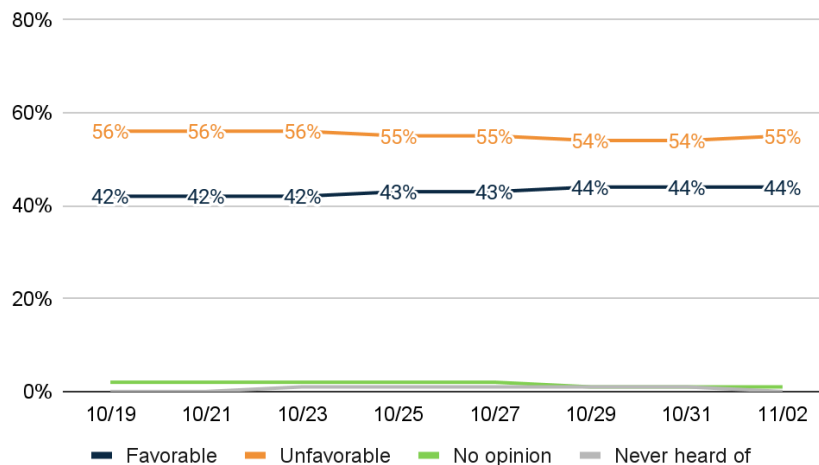
4. If the elections were held today, and you had to make a choice, would you vote for the Republican or Democratic candidate for U.S. Congress?



	Freq.	%	10/31/22	10/29/22
Republican candidate	863	49.2%	47.7%	47.4%
Definitely the Republican candidate	750	42.8%	41.5%	40.7%
Probably the Republican candidate	113	6.4%	6.2%	6.7%
Democratic candidate	829	47.3%	48.3%	49.1%
Probably the Democratic candidate	112	6.4%	7.1%	6.8%
Definitely the Democratic candidate	717	40.9%	41.2%	42.3%
Unsure	62	3.5%	4.0%	3.5%
Total	1754	100.0%	100.0%	100.0%

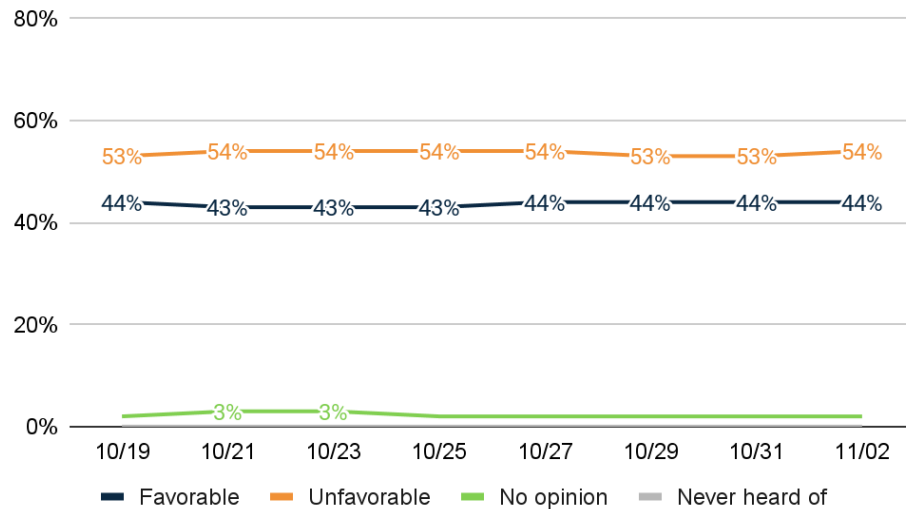
5 – 8. Do you have a favorable or unfavorable opinion of?

5. Joe Biden



	Freq.	%	10/31/22	10/29/22
Favorable	768	43.8%	44.3%	44.5%
Very favorable	354	20.2%	20.8%	22.0%
Somewhat favorable	413	23.6%	23.5%	22.5%
Unfavorable	960	54.7%	53.8%	53.7%
Somewhat unfavorable	110	6.3%	6.1%	6.6%
Very unfavorable	850	48.4%	47.7%	47.1%
No opinion	20	1.1%	1.4%	1.3%
Never heard of	7	0.4%	0.5%	0.6%
Total	1754	100.0%	100.0%	100.0%

6. Donald Trump



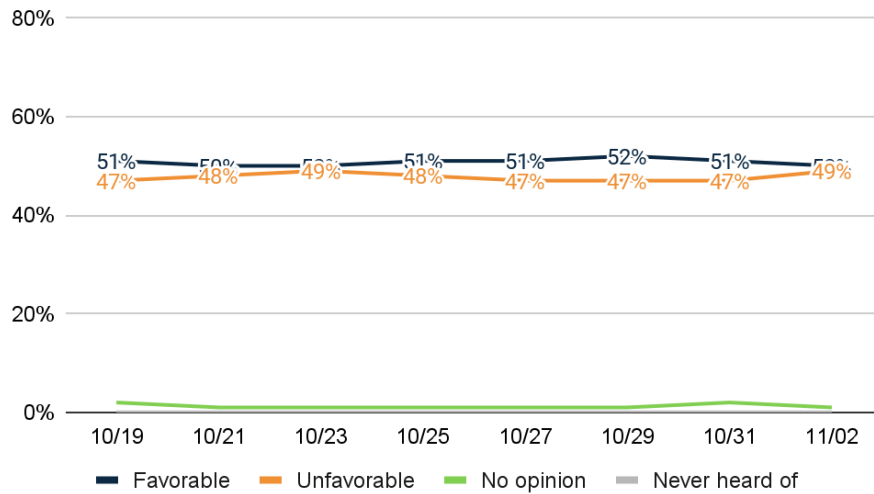
	Freq.	%	10/31/22	10/29/22
Favorable	768	43.8%	44.5%	44.4%
Very favorable	434	24.7%	26.5%	26.9%
Somewhat favorable	334	19.0%	18.0%	17.5%
Unfavorable	940	53.6%	53.3%	53.0%
Somewhat unfavorable	146	8.3%	7.3%	5.9%
Very unfavorable	794	45.3%	46.0%	47.0%
No opinion	40	2.3%	2.1%	2.3%
Never heard of	6	0.4%	0.1%	0.4%
Total	1754	100.0%	100.0%	100.0%

7. Gretchen Whitmer

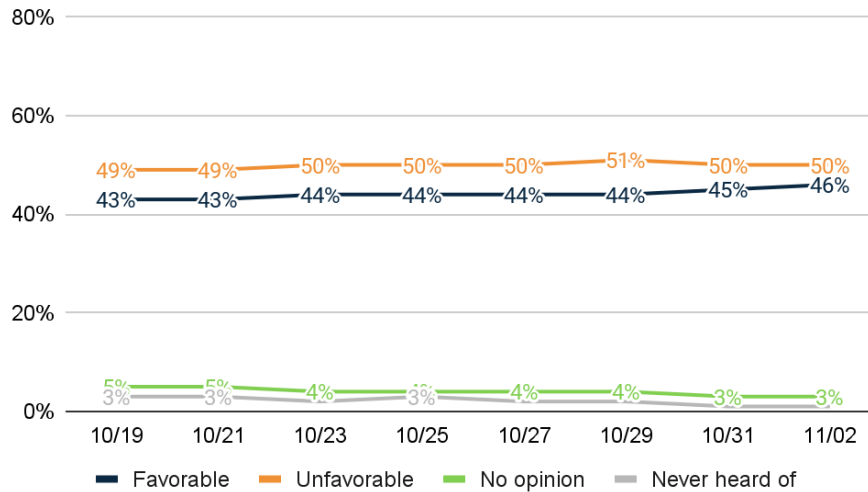
	Freq.	%	10/31/22	10/29/22
Favorable	873	49.8%	50.9%	51.6%
Very favorable	597	34.1%	33.8%	35.7%
Somewhat favorable	276	15.7%	17.0%	15.9%



Unfavorable	854	48.7%	47.1%	46.8%
Somewhat unfavorable	139	7.9%	8.1%	8.6%
Very unfavorable	715	40.8%	39.0%	38.2%
No opinion	22	1.3%	1.7%	1.1%
Never heard of	4	0.2%	0.4%	0.5%
Total	1754	100.0%	100.0%	100.0%



8. Tudor Dixon



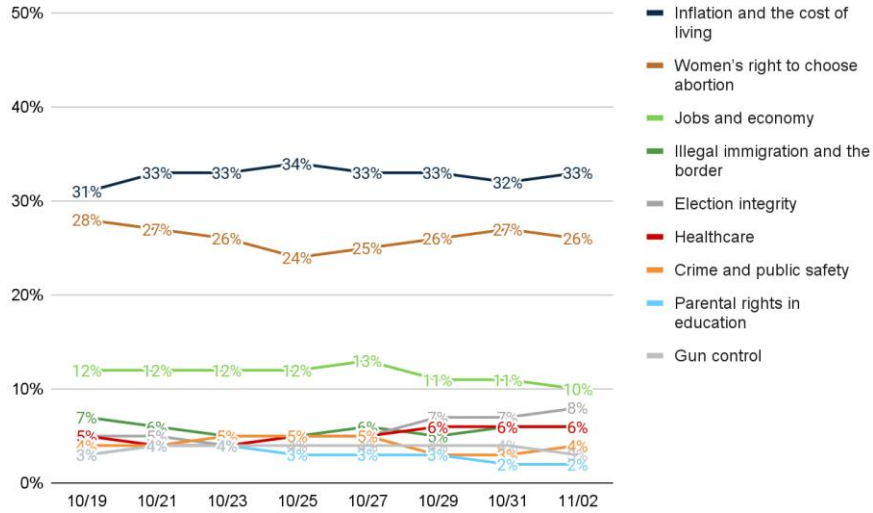
	Freq.	%	10/31/22	10/29/22
Favorable	810	46.2%	45.1%	43.6%
Very favorable	478	27.3%	27.9%	26.5%
Somewhat favorable	332	18.9%	17.1%	17.2%
Unfavorable	869	49.5%	50.3%	50.5%
Somewhat unfavorable	125	7.2%	6.9%	7.8%
Very unfavorable	743	42.4%	43.4%	42.7%
No opinion	50	2.9%	3.2%	4.0%



Never heard of	25	1.4%	1.4%	1.9%
Total	1754	100.0%	100.0%	100.0%

Top Priority

9. From the following list, which issue is personally most important to you that would decide your vote for government?



	Freq.	%	10/31/22	10/29/22
Inflation and the cost of living	572	32.6%	32.5%	33.1%
Women's right to choose abortion	450	25.6%	26.7%	26.3%
Jobs and economy	180	10.2%	10.6%	11.2%
Illegal immigration and the border	99	5.6%	5.9%	5.3%
Election integrity	139	7.9%	6.8%	6.6%
Healthcare	110	6.3%	6.0%	5.8%
Crime and public safety	73	4.2%	3.4%	3.5%
Parental rights in education	42	2.4%	2.3%	2.6%
Gun control	59	3.3%	3.9%	3.7%
Don't know	32	1.8%	2.0%	1.8%
Total	1754	100.0%	100.0%	100.0%

Thinking about the upcoming general election in November...

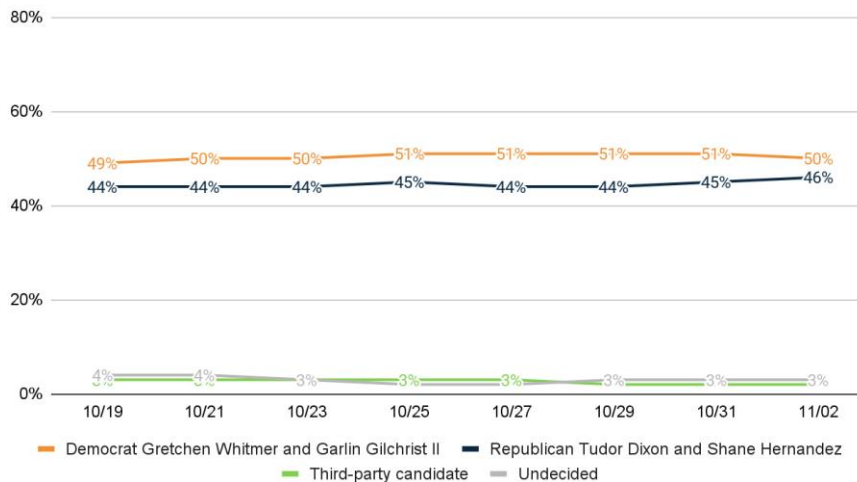
Gov Ballot

10. If the general election for Governor was held today, and you had to make a choice, who would you vote for?

	Freq.	%	10/31/22	10/29/22
<u>Democrat Gretchen Whitmer and Garlin Gilchrist II</u>	875	49.9%	50.9%	51.0%
Definitely Democrat Gretchen Whitmer and Garlin Gilchrist II	768	43.8%	44.4%	45.2%
Probably Democrat Gretchen Whitmer and Garlin Gilchrist II	107	6.1%	6.5%	5.8%
<u>Republican Tudor Dixon and Shane Hernandez</u>	798	45.5%	44.5%	44.0%
Definitely Republican Tudor Dixon and Shane Hernandez	652	37.2%	37.1%	34.2%



Probably Republican Tudor Dixon and Shane Hernandez	146	8.3%	7.4%	9.8%
Third-party candidate	36	2.0%	2.0%	2.3%
Definitely a third-party candidate	13	0.7%	0.8%	1.1%
Probably a third-party candidate	23	1.3%	1.2%	1.2%
Undecided	45	2.6%	2.6%	2.7%
Total	1754	100.0%	100.0%	100.0%



Gov Undecided Probe

	Freq.	%
Lean Republican Tudor Dixon	6	12.8%
Lean Democrat Gretchen Whitmer	12	25.8%
Truly Undecided	27	61.3%
Total	45	100.0%

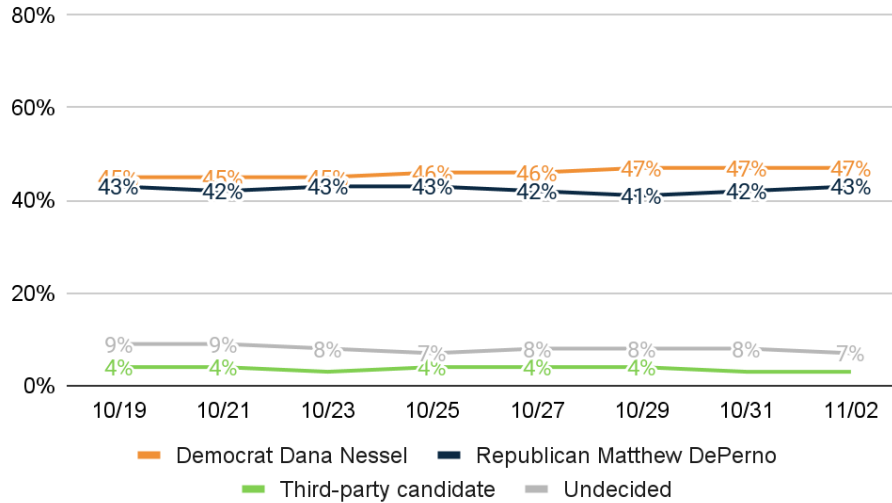
Gov Ballot Combined

	Freq.	%
Democrat Gretchen Whitmer and Garlin Gilchrist II	875	49.9%
Definitely Democrat Gretchen Whitmer and Garlin Gilchrist II	768	43.8%
Probably Democrat Gretchen Whitmer and Garlin Gilchrist II	107	6.1%
Republican Tudor Dixon and Shane Hernandez	798	45.5%
Definitely Republican Tudor Dixon and Shane Hernandez	652	37.2%
Probably Republican Tudor Dixon and Shane Hernandez	146	8.3%
Third-party candidate	36	2.0%
Definitely a third-party candidate	13	0.7%
Probably a third-party candidate	23	1.3%
Undecided	45	2.6%
Lean Republican Tudor Dixon	6	0.3%
Lean Democrat Gretchen Whitmer	12	0.7%
Truly Undecided	28	1.6%
Total	1754	100.0%



AG Ballot

11. If the general election for Attorney General was held today, and you had to make a choice, who would you vote for?

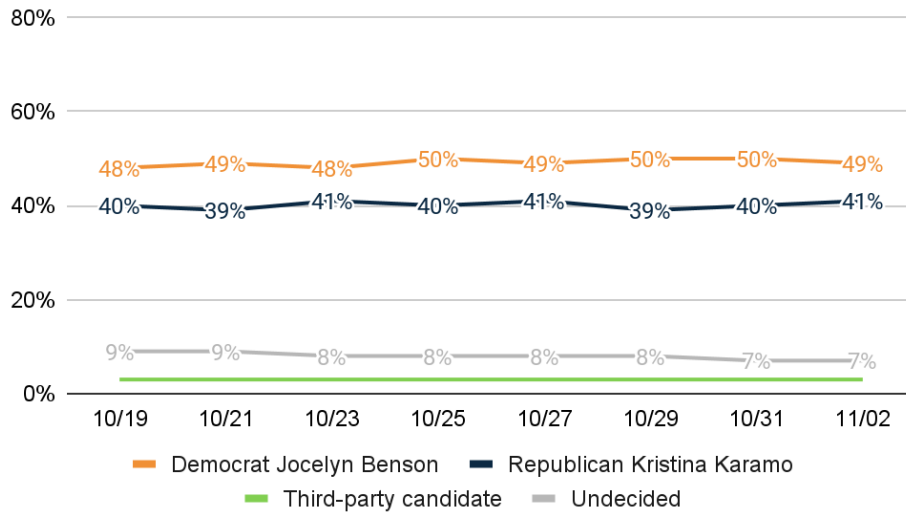


	Freq.	%	10/31/22	10/29/22
<u>Democrat Dana Nessel</u>	831	47.4%	47.2%	46.8%
Definitely Democrat Dana Nessel	702	40.0%	40.3%	39.8%
Probably Democrat Dana Nessel	129	7.3%	6.9%	7.0%
<u>Republican Matthew DePerno</u>	756	43.1%	42.2%	41.1%
Definitely Republican Matthew DePerno	567	32.3%	32.7%	30.5%
Probably Republican Matthew DePerno	189	10.8%	9.5%	10.6%
<u>Third-party candidate</u>	46	2.6%	3.0%	3.8%
Definitely a third-party candidate	18	1.0%	1.0%	1.4%
Probably a third-party candidate	28	1.6%	2.0%	2.4%
Undecided	121	6.9%	7.5%	8.3%
Total	1754	100.0%	100.0%	100.0%

SoS Ballot

12. If the general election for Secretary of State was held today, and you had to make a choice, who would you vote for?





	Freq.	%	10/31/22	10/29/22
<u>Democrat Jocelyn Benson</u>	856	48.8%	49.8%	50.1%
Definitely Democrat Jocelyn Benson	715	40.8%	41.6%	40.7%
Probably Democrat Jocelyn Benson	141	8.0%	8.1%	9.4%
<u>Republican Kristina Karamo</u>	727	41.5%	40.4%	39.2%
Definitely Republican Kristina Karamo	549	31.3%	31.2%	28.9%
Probably Republican Kristina Karamo	178	10.2%	9.2%	10.3%
<u>Third-party candidate</u>	55	3.1%	3.1%	2.9%
Definitely a third-party candidate	26	1.5%	1.5%	0.9%
Probably a third-party candidate	29	1.6%	1.6%	2.0%
Undecided	116	6.6%	6.7%	7.8%
Total	1754	100.0%	100.0%	100.0%

Prop 3

13. Proposal 3 would amend the state constitution to establish a new individual right to reproductive freedom, including right to make all decisions about pregnancy and abortion, allow state to regulate abortion in some cases, and forbid prosecution of individual exercising established right. This amendment would establish a new individual right to reproductive freedom, including right to make and carry out all decisions about pregnancy, such as prenatal care, childbirth, postpartum care, contraception, sterilization, abortion, miscarriage management and infertility. Allow state to regulate abortion after fetal viability, but not prohibit if medically needed to protect a patient's life or physical or mental health. Forbid state discrimination in enforcement of this right, prohibit prosecution of an individual or a personal helping a pregnant individual for exercising rights established by this amendment. Invalidate state laws conflicting with this amendment.

	Freq.	%
<u>Yes</u>	915	52.2%
Definitely Yes	779	44.4%
Probably Yes	136	7.8%



No	<u>749</u>	<u>42.7%</u>
Probably No	70	4.0%
Definitely No	679	38.7%
Unsure	89	5.1%
Total	1754	100.0%

14. Are you female or male?

	Freq.	%
Female	947	54.0%
Male	807	46.0%
Total	1754	100.0%

15. What age range do you fall within?

	Freq.	%
<u>Under 50</u>	<u>663</u>	<u>37.8%</u>
18 - 34	295	16.8%
35 - 49	368	21.0%
<u>50 and Over</u>	<u>1091</u>	<u>62.2%</u>
50 - 64	530	30.2%
65 or older	561	32.0%
Total	1754	100.0%

16. Generally speaking, do you think of yourself as a Democrat, Republican, or Independent?

	Freq.	%
<u>Republican</u>	<u>594</u>	<u>33.9%</u>
Strongly Republican	291	16.6%
Mostly Republican	303	17.3%
<u>Independent</u>	<u>516</u>	<u>29.4%</u>
<u>Democratic</u>	<u>617</u>	<u>35.2%</u>
Mostly Democratic	272	15.5%
Strongly Democratic	346	19.7%
Unsure	26	1.5%
Total	1754	100.0%

17. And thinking about your views toward politics and government, would you say you are...

	Freq.	%
<u>Conservative</u>	<u>716</u>	<u>40.8%</u>
Very conservative	323	18.4%
Somewhat conservative	393	22.4%



<u>Moderate</u>	<u>547</u>	<u>31.2%</u>
<u>Liberal</u>	<u>456</u>	<u>26.0%</u>
Somewhat liberal	275	15.7%
Very liberal	181	10.3%
Unsure	35	2.0%
Total	1754	100.0%

18. Do you consider the area where you live to be more rural, suburban, or urban?

	Freq.	%
Rural	622	35.4%
Suburban	894	51.0%
Urban	238	13.6%
Total	1754	100.0%

19. If you have one, what is your religious affiliation?

	Freq.	%
Catholic	344	19.6%
Mainline Protestant (Methodist, Lutheran, Episcopal, Anglican, etc.)	354	20.2%
Evangelical or Born-Again Protestant (Non-denominational Evangelical, Pentecostal, Church of God, etc.)	465	26.5%
Another religion	140	8.0%
Not religious	385	22.0%
Unsure	66	3.8%
Total	1754	100.0%

20. How often do you vote in general elections held in November of each even year?

	Freq.	%
Every general election including for president and in midterms	1282	73.1%
Most general elections, including for president and in some midterms	310	17.7%
Every general election for president but not midterms	63	3.6%
Most general elections for president	98	5.6%
Total	1754	100.0%

21. What annual household income range do you fall within out of the following options?

	Freq.	%
Less than \$40,000	415	23.6%
\$40,000 - \$69,999	421	24.0%
\$70,000 - \$99,999	312	17.8%
\$100,000 or more	494	28.2%
Unsure	113	6.4%
Total	1754	100.0%



22. Which of the following best describes your race or ethnicity?

	Freq.	%
White or Caucasian	1417	80.8%
Asian or Pacific Islander	9	0.5%
Black or African American	210	12.0%
Hispanic or Latino	42	2.4%
Other	51	2.9%
Unsure	24	1.4%
Total	1754	100.0%

23. What's the highest level of education you have completed?

	Freq.	%
<u>No degree</u>	<u>1020</u>	<u>58.2%</u>
Some high school	34	1.9%
High school diploma/GED	305	17.4%
Technical Certification	76	4.4%
Some college or Associate's Degree	604	34.5%
<u>At least College</u>	<u>721</u>	<u>41.1%</u>
Four-year undergraduate or Bachelor's Degree	450	25.6%
Graduate degree or further	271	15.5%
Unsure	13	0.7%
Total	1754	100.0%

24. Geo – DMA

	Freq.	%
Alpena	11	0.6%
Detroit	787	44.9%
Lansing	123	7.0%
Marquette	56	3.2%
Toledo	20	1.1%
Flint	210	12.0%
Grand Rapids	342	19.5%
South Bend	40	2.3%
Traverse City	162	9.2%
Duluth	1	0.1%
Green Bay	2	0.1%
Total	1754	100.0%

25. Age + Income

	Freq.	%
<65 <\$40k	267	15.2%
<65 \$40k-\$69k	252	14.4%
<65 \$70k-\$99k	215	12.2%
<65 \$100k+	399	22.7%



65+ <\$40k	148	8.4%
65+ \$40k-\$69k	168	9.6%
65+ \$70k-\$99k	97	5.6%
65+ \$100k+	96	5.4%
Unsure	113	6.4%
Total	1754	100.0%

26. Gender + Age

	Freq.	%
F 18 - 34	167	9.5%
F 35 - 49	173	9.9%
F 50 - 64	281	16.0%
F 65+	326	18.6%
M 18 - 34	128	7.3%
M 35 - 49	195	11.1%
M 50 - 64	249	14.2%
M 65+	235	13.4%
Total	1754	100.0%

27. Race + Gender

	Freq.	%
White Female	745	42.5%
White Male	672	38.3%
Asian Female	8	0.5%
Asian Male	1	0.1%
Black Female	127	7.3%
Black Male	83	4.7%
Hispanic Female	30	1.7%
Hispanic Male	12	0.7%
Other Female	30	1.7%
Other Male	22	1.2%
Unsure	24	1.4%
Total	1754	100.0%

28. Gender + Education

	Freq.	%
Female At least College	349	19.9%
Female No degree	593	33.8%
Male At least College	372	21.2%
Male No degree	427	24.4%
Unsure	13	0.7%
Total	1754	100.0%



METHODOLOGY

This survey was conducted October 29 – November 1, 2022, with 1754 likely general election voters. It has a margin of error of $\pm 2.34\%$. Known registered voters were interviewed via IVR, SMS, and email invitation. This survey was weighted to a likely general election voter universe.

ABOUT THE FIRM

[Cygnal](#) is an award-winning international polling, public opinion, and predictive analytics firm that pioneered multi-mode polling, text-to-web collection, and emotive analysis. Cygnal consistently ranks as the most accurate firm, and clients rely on Cygnal's ability to create intelligence for action. Its team members have worked in 48 states and multiple countries on more than 2,700 corporate, public affairs, and political campaigns.

