



CYGNAL

Survey of Likely General Election Voters

Michigan Statewide

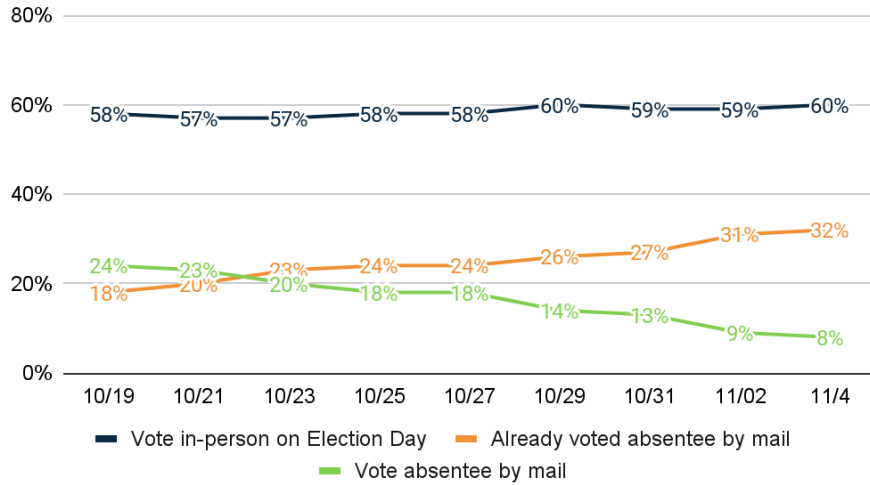
Conducted November 1 – 4, 2022

n=1603 | $\pm 2.45\%$



Vote Method

1. How do you plan to vote in the November election for Congress, Governor, and local offices?



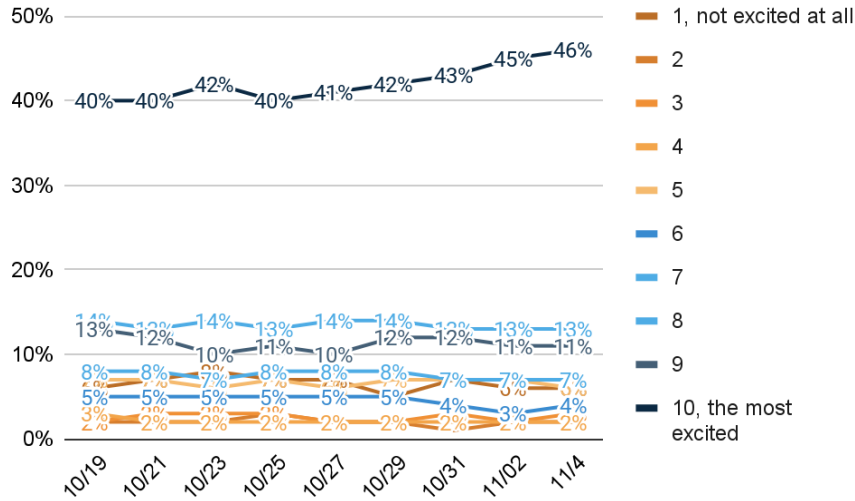
	Freq.	%	11/2/22	10/31/22
<u>Vote in-person on Election Day</u>	959	59.8%	59.4%	59.5%
Definitely vote in-person on Election Day	849	53.0%	52.6%	52.1%
Probably vote in-person on Election Day	110	6.9%	6.9%	7.4%
<u>Already voted absentee by mail</u>	521	32.5%	31.3%	27.5%
<u>Vote absentee by mail</u>	123	7.7%	9.3%	13.1%
Definitely will vote absentee by mail	96	6.0%	7.7%	10.7%
Probably will vote absentee by mail	27	1.7%	1.6%	2.3%
Total	1603	100.0%	100.0%	100.0%

Enthusiasm

2. How excited are you to vote in the November general election for Governor, Congress, and state legislature on a scale of 1 to 10, with 1 being not excited at all and 10 being very excited?

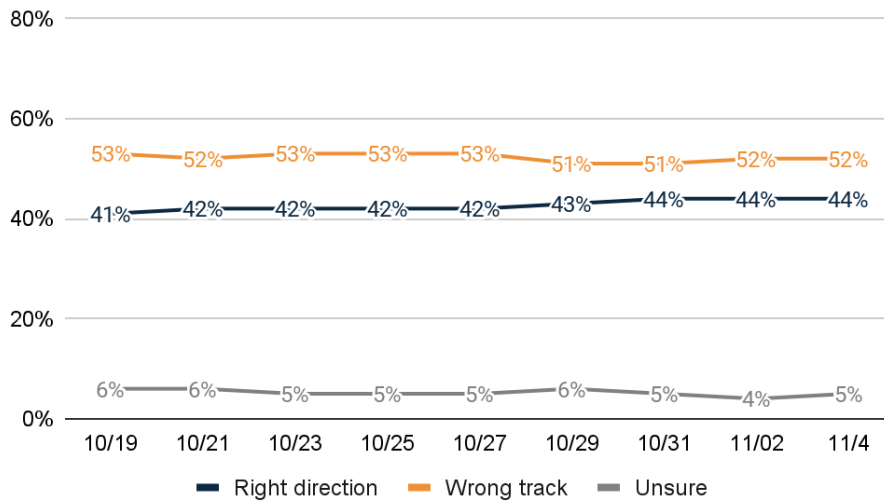
	Freq.	%	11/2/22	10/31/22
1, not excited at all	89	5.6%	5.9%	6.6%
2	28	1.8%	1.8%	1.2%
3	42	2.6%	2.3%	3.0%
4	29	1.8%	1.9%	1.8%
5	102	6.3%	6.5%	6.9%
6	58	3.6%	3.3%	3.7%
7	117	7.3%	7.4%	7.3%
8	204	12.7%	12.6%	13.0%
9	174	10.9%	11.0%	11.7%
10, the most excited	739	46.1%	45.5%	43.0%
Unsure	21	1.3%	1.9%	1.7%
Total	1603	100.0%	100.0%	100.0%





MI RD/WT

3. Generally speaking, would you say things in Michigan are headed in the right direction or off on the wrong track?

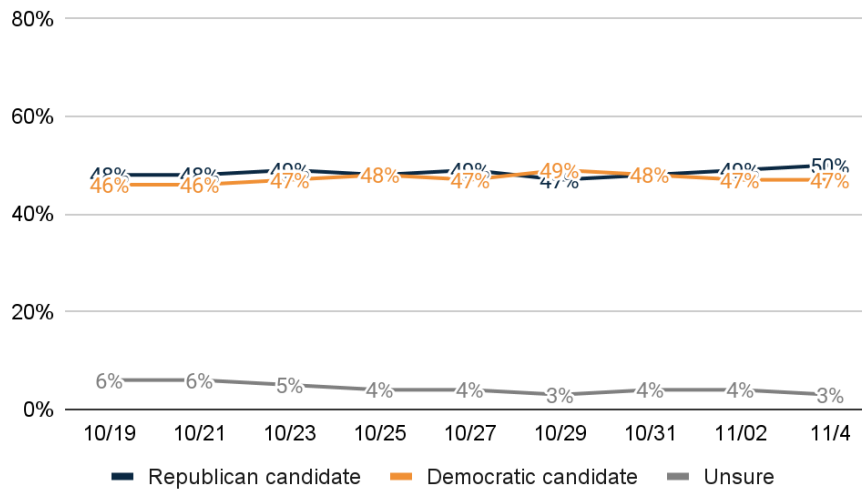


	Freq.	%	11/2/22	10/31/22
Right direction	698	43.6%	43.7%	44.0%
Definitely the right direction	212	13.2%	13.4%	15.8%
Mostly the right direction	486	30.3%	30.3%	28.1%
Wrong track	832	51.9%	51.8%	50.8%
Mostly the wrong track	273	17.0%	17.2%	19.8%
Definitely the wrong track	560	34.9%	34.6%	31.1%
Unsure	72	4.5%	4.5%	5.2%
Total	1603	100.0%	100.0%	100.0%



Generic Congressional Ballot

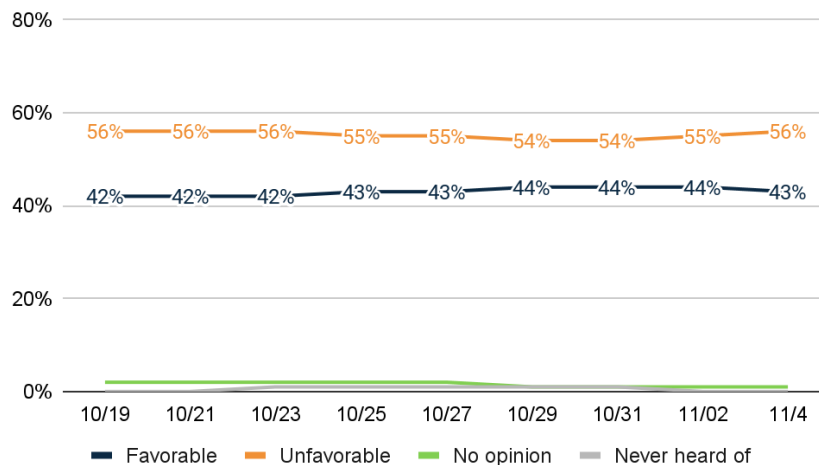
4. If the elections were held today, and you had to make a choice, would you vote for the Republican or Democratic candidate for U.S. Congress?



	Freq.	%	11/2/22	10/31/22
Republican candidate	795	49.6%	49.2%	47.7%
Definitely the Republican candidate	698	43.6%	42.8%	41.5%
Probably the Republican candidate	97	6.0%	6.4%	6.2%
Democratic candidate	757	47.2%	47.3%	48.3%
Probably the Democratic candidate	82	5.1%	6.4%	7.1%
Definitely the Democratic candidate	675	42.1%	40.9%	41.2%
Unsure	51	3.2%	3.5%	4.0%
Total	1603	100.0%	100.0%	100.0%

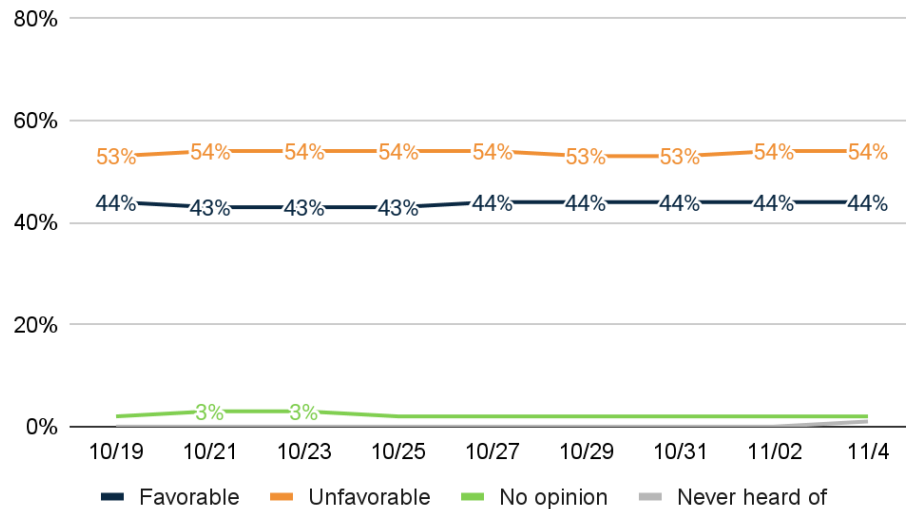
5 – 8. Do you have a favorable or unfavorable opinion of?

5. Joe Biden



	Freq.	%	11/2/22	10/31/22
Favorable	689	43.0%	43.8%	44.3%
Very favorable	322	20.1%	20.2%	20.8%
Somewhat favorable	367	22.9%	23.6%	23.5%
Unfavorable	898	56.0%	54.7%	53.8%
Somewhat unfavorable	110	6.9%	6.3%	6.1%
Very unfavorable	788	49.1%	48.4%	47.7%
No opinion	13	0.8%	1.1%	1.4%
Never heard of	4	0.2%	0.4%	0.5%
Total	1603	100.0%	100.0%	100.0%

6. Donald Trump



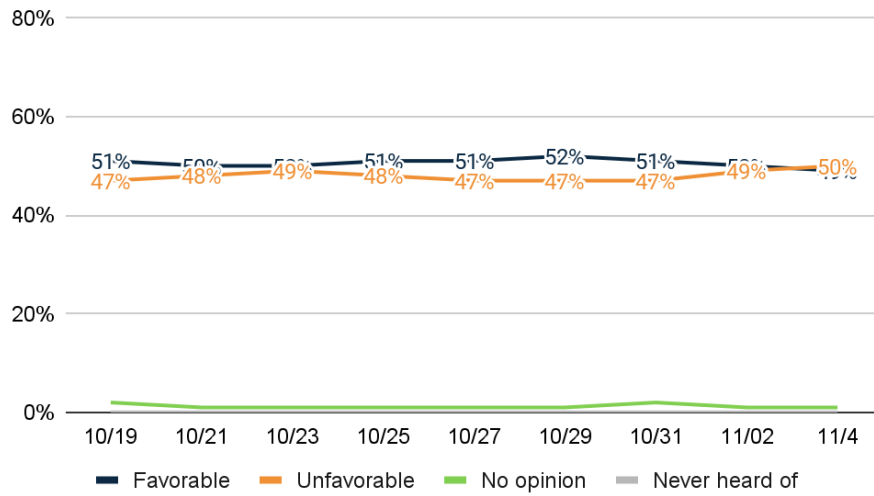
	Freq.	%	11/2/22	10/31/22
Favorable	700	43.7%	43.8%	44.5%
Very favorable	415	25.9%	24.7%	26.5%
Somewhat favorable	286	17.8%	19.0%	18.0%
Unfavorable	862	53.8%	53.6%	53.3%
Somewhat unfavorable	136	8.5%	8.3%	7.3%
Very unfavorable	726	45.3%	45.3%	46.0%
No opinion	29	1.8%	2.3%	2.1%
Never heard of	12	0.7%	0.4%	0.1%
Total	1603	100.0%	100.0%	100.0%

7. Gretchen Whitmer

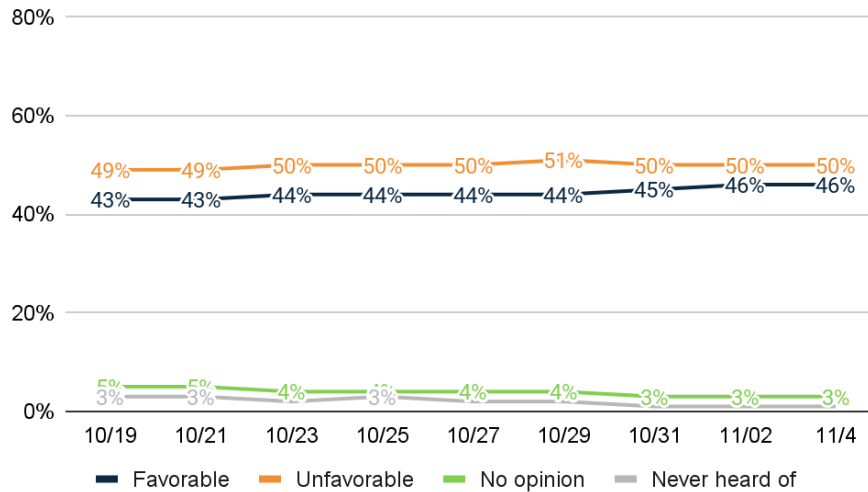
	Freq.	%	11/2/22	10/31/22
Favorable	782	48.8%	49.8%	50.9%
Very favorable	539	33.6%	34.1%	33.8%
Somewhat favorable	243	15.2%	15.7%	17.0%



Unfavorable	807	50.4%	48.7%	47.1%
Somewhat unfavorable	140	8.7%	7.9%	8.1%
Very unfavorable	667	41.6%	40.8%	39.0%
No opinion	13	0.8%	1.3%	1.7%
Never heard of	1	0.1%	0.2%	0.4%
Total	1603	100.0%	100.0%	100.0%



8. Tudor Dixon



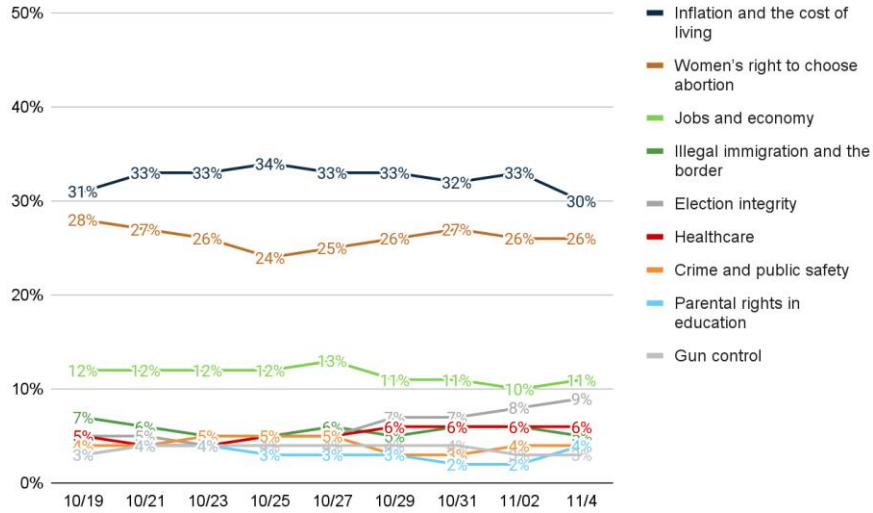
	Freq.	%	11/2/22	10/31/22
Favorable	734	45.8%	46.2%	45.1%
Very favorable	456	28.5%	27.3%	27.9%
Somewhat favorable	277	17.3%	18.9%	17.1%
Unfavorable	805	50.2%	49.5%	50.3%
Somewhat unfavorable	135	8.4%	7.2%	6.9%
Very unfavorable	670	41.8%	42.4%	43.4%
No opinion	45	2.8%	2.9%	3.2%



Never heard of	20	1.2%	1.4%	1.4%
Total	1603	100.0%	100.0%	100.0%

Top Priority

9. From the following list, which issue is personally most important to you that would decide your vote for government?



	Freq.	%	11/2/22	10/31/22
Inflation and the cost of living	477	29.7%	32.6%	32.5%
Women's right to choose abortion	416	26.0%	25.6%	26.7%
Jobs and economy	177	11.0%	10.2%	10.6%
Illegal immigration and the border	79	4.9%	5.6%	5.9%
Election integrity	142	8.8%	7.9%	6.8%
Healthcare	98	6.1%	6.3%	6.0%
Crime and public safety	70	4.3%	4.2%	3.4%
Parental rights in education	61	3.8%	2.4%	2.3%
Gun control	45	2.8%	3.3%	3.9%
Don't know	39	2.4%	1.8%	2.0%
Total	1603	100.0%	100.0%	100.0%

Thinking about the upcoming general election in November...

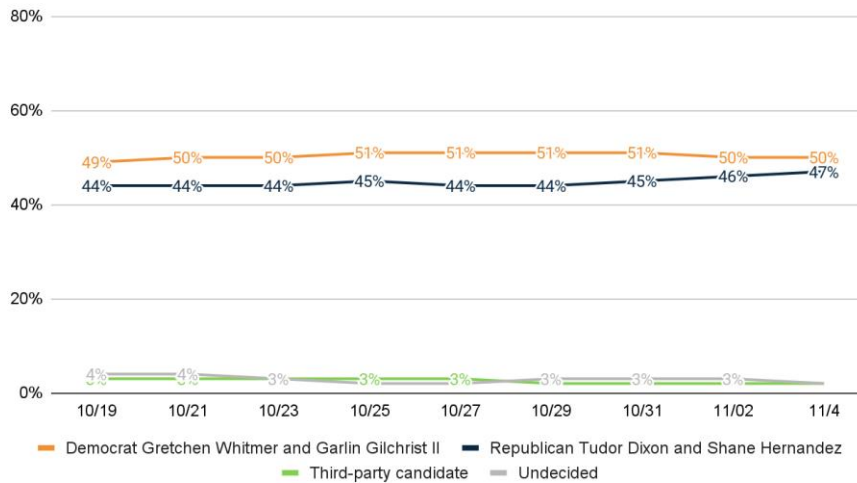
Gov Ballot

10. If the general election for Governor was held today, and you had to make a choice, who would you vote for?

	Freq.	%	11/2/22	10/31/22
<u>Democrat Gretchen Whitmer and Garlin Gilchrist II</u>	805	50.2%	49.9%	50.9%
Definitely Democrat Gretchen Whitmer and Garlin Gilchrist II	703	43.9%	43.8%	44.4%
Probably Democrat Gretchen Whitmer and Garlin Gilchrist II	101	6.3%	6.1%	6.5%
<u>Republican Tudor Dixon and Shane Hernandez</u>	745	46.5%	45.5%	44.5%
Definitely Republican Tudor Dixon and Shane Hernandez	631	39.3%	37.2%	37.1%



Probably Republican Tudor Dixon and Shane Hernandez	115	7.2%	8.3%	7.4%
Third-party candidate	28	1.8%	2.0%	2.0%
Definitely a third-party candidate	14	0.8%	0.7%	0.8%
Probably a third-party candidate	15	0.9%	1.3%	1.2%
Undecided	25	1.5%	2.6%	2.6%
Total	1603	100.0%	100.0%	100.0%



Gov Undecided Probe

	Freq.	%	11/02/22
Lean Republican Tudor Dixon	6	25.6%	12.8%
Lean Democrat Gretchen Whitmer	3	13.8%	25.8%
Truly Undecided	15	60.0%	61.3%
Total	25	100.0%	100.0%

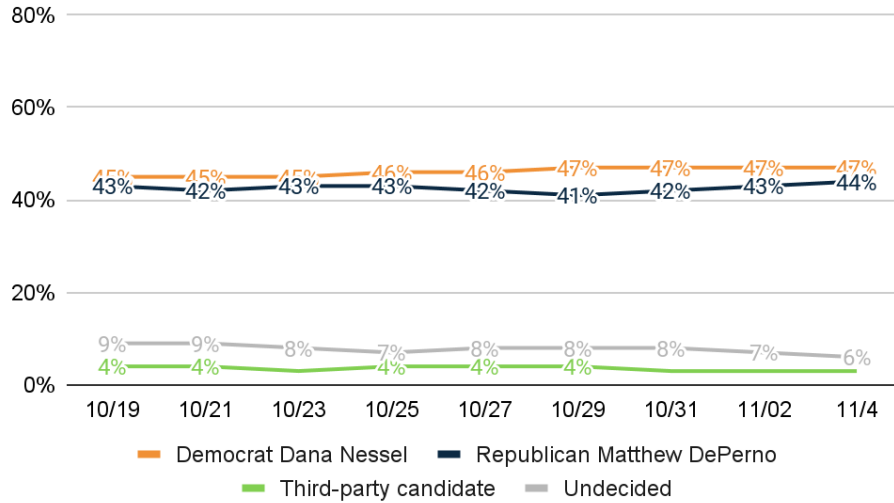
Gov Ballot Combined

	Freq.	%	11/02/22
Democrat Gretchen Whitmer and Garlin Gilchrist II	805	50.2%	49.9%
Definitely Democrat Gretchen Whitmer and Garlin Gilchrist II	703	43.9%	43.8%
Probably Democrat Gretchen Whitmer and Garlin Gilchrist II	101	6.3%	6.1%
Republican Tudor Dixon and Shane Hernandez	745	46.5%	45.5%
Definitely Republican Tudor Dixon and Shane Hernandez	631	39.3%	37.2%
Probably Republican Tudor Dixon and Shane Hernandez	115	7.2%	8.3%
Third-party candidate	28	1.8%	2.0%
Definitely a third-party candidate	14	0.8%	0.7%
Probably a third-party candidate	15	0.9%	1.3%
Undecided	25	1.5%	2.6%
Lean Republican Tudor Dixon	6	0.4%	0.3%
Lean Democrat Gretchen Whitmer	3	0.2%	0.7%
Truly Undecided	15	0.9%	1.6%
Total	1603	100.0%	100.0%



AG Ballot

11. If the general election for Attorney General was held today, and you had to make a choice, who would you vote for?



	Freq.	%	11/2/22	10/31/22
Democrat Dana Nessel	761	47.5%	47.4%	47.2%
Definitely Democrat Dana Nessel	632	39.4%	40.0%	40.3%
Probably Democrat Dana Nessel	129	8.0%	7.3%	6.9%
Republican Matthew DePerno	700	43.7%	43.1%	42.2%
Definitely Republican Matthew DePerno	547	34.1%	32.3%	32.7%
Probably Republican Matthew DePerno	153	9.5%	10.8%	9.5%
Third-party candidate	50	3.1%	2.6%	3.0%
Definitely a third-party candidate	18	1.1%	1.0%	1.0%
Probably a third-party candidate	33	2.0%	1.6%	2.0%
Undecided	92	5.7%	6.9%	7.5%
Total	1603	100.0%	100.0%	100.0%

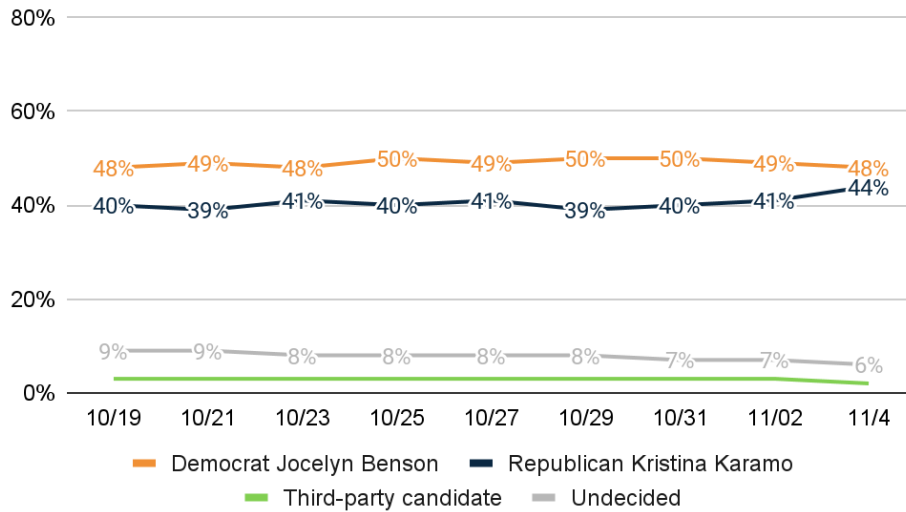
SoS Ballot

12. If the general election for Secretary of State was held today, and you had to make a choice, who would you vote for?

	Freq.	%	11/2/22	10/31/22
Democrat Jocelyn Benson	777	48.5%	48.8%	49.8%
Definitely Democrat Jocelyn Benson	641	40.0%	40.8%	41.6%
Probably Democrat Jocelyn Benson	136	8.5%	8.0%	8.1%
Republican Kristina Karamo	702	43.8%	41.5%	40.4%
Definitely Republican Kristina Karamo	534	33.3%	31.3%	31.2%
Probably Republican Kristina Karamo	168	10.5%	10.2%	9.2%
Third-party candidate	29	1.8%	3.1%	3.1%
Definitely a third-party candidate	11	0.7%	1.5%	1.5%



Probably a third-party candidate	18	1.1%	1.6%	1.6%
Undecided	95	5.9%	6.6%	6.7%
Total	1603	100.0%	100.0%	100.0%



Prop 3

13. Proposal 3 would amend the state constitution to establish a new individual right to reproductive freedom, including right to make all decisions about pregnancy and abortion, allow state to regulate abortion in some cases, and forbid prosecution of individual exercising established right. This amendment would establish a new individual right to reproductive freedom, including right to make and carry out all decisions about pregnancy, such as prenatal care, childbirth, postpartum care, contraception, sterilization, abortion, miscarriage management and infertility. Allow state to regulate abortion after fetal viability, but not prohibit if medically needed to protect a patient’s life or physical or mental health. Forbid state discrimination in enforcement of this right, prohibit prosecution of an individual or a personal helping a pregnant individual for exercising rights established by this amendment. Invalidate state laws conflicting with this amendment.

	Freq.	%	11/02/22
Yes	829	51.7%	52.2%
Definitely Yes	706	44.0%	44.4%
Probably Yes	123	7.6%	7.8%
No	700	43.6%	42.7%
Probably No	86	5.3%	4.0%
Definitely No	614	38.3%	38.7%
Unsure	75	4.7%	5.1%
Total	1603	100.0%	100.0%



14. Are you female or male?

	Freq.	%
Female	866	54.0%
Male	737	46.0%
Total	1603	100.0%

15. What age range do you fall within?

	Freq.	%
<u>Under 50</u>	<u>606</u>	<u>37.8%</u>
18 - 34	269	16.8%
35 - 49	337	21.0%
<u>50 and Over</u>	<u>997</u>	<u>62.2%</u>
50 - 64	484	30.2%
65 or older	513	32.0%
Total	1603	100.0%

16. Generally speaking, do you think of yourself as a Democrat, Republican, or Independent?

	Freq.	%
<u>Republican</u>	<u>550</u>	<u>34.3%</u>
Strongly Republican	277	17.3%
Mostly Republican	273	17.0%
<u>Independent</u>	<u>452</u>	<u>28.2%</u>
<u>Democratic</u>	<u>572</u>	<u>35.7%</u>
Mostly Democratic	245	15.3%
Strongly Democratic	326	20.4%
Unsure	29	1.8%
Total	1603	100.0%

17. And thinking about your views toward politics and government, would you say you are...

	Freq.	%
<u>Conservative</u>	<u>654</u>	<u>40.8%</u>
Very conservative	295	18.4%
Somewhat conservative	359	22.4%
<u>Moderate</u>	<u>500</u>	<u>31.2%</u>
<u>Liberal</u>	<u>417</u>	<u>26.0%</u>
Somewhat liberal	252	15.7%
Very liberal	165	10.3%
Unsure	32	2.0%
Total	1603	100.0%



18. Do you consider the area where you live to be more rural, suburban, or urban?

	Freq.	%
Rural	572	35.7%
Suburban	802	50.0%
Urban	229	14.3%
Total	1603	100.0%

19. If you have one, what is your religious affiliation?

	Freq.	%
Catholic	314	19.6%
Mainline Protestant (Methodist, Lutheran, Episcopal, Anglican, etc.)	324	20.2%
Evangelical or Born-Again Protestant (Non-denominational)	425	26.5%
Evangelical, Pentecostal, Church of God, etc.)		
Another religion	130	8.1%
Not religious	358	22.3%
Unsure	52	3.2%
Total	1603	100.0%

20. How often do you vote in general elections held in November of each even year?

	Freq.	%
Every general election including for president and in midterms	1145	71.5%
Most general elections, including for president and in some midterms	307	19.2%
Every general election for president but not midterms	52	3.2%
Most general elections for president	98	6.1%
Total	1603	100.0%

21. What annual household income range do you fall within out of the following options?

	Freq.	%
Less than \$40,000	368	22.9%
\$40,000 - \$69,999	378	23.6%
\$70,000 - \$99,999	273	17.0%
\$100,000 or more	481	30.0%
Unsure	103	6.4%
Total	1603	100.0%

22. Which of the following best describes your race or ethnicity?

	Freq.	%
White or Caucasian	1295	80.8%
Asian or Pacific Islander	10	0.6%
Black or African American	192	12.0%
Hispanic or Latino	41	2.6%
Other	45	2.8%
Unsure	19	1.2%
Total	1603	100.0%



23. What's the highest level of education you have completed?

	Freq.	%
<u>No degree</u>	<u>936</u>	<u>58.4%</u>
Some high school	27	1.7%
High school diploma/GED	281	17.5%
Technical Certification	73	4.6%
Some college or Associate's Degree	555	34.6%
<u>At least College</u>	<u>659</u>	<u>41.1%</u>
Four-year undergraduate or Bachelor's Degree	388	24.2%
Graduate degree or further	270	16.9%
Unsure	8	0.5%
Total	1603	100.0%

24. Geo – DMA

	Freq.	%
Alpena	7	0.4%
Detroit	725	45.2%
Lansing	108	6.7%
Marquette	45	2.8%
Toledo	19	1.2%
Flint	205	12.8%
Grand Rapids	324	20.2%
South Bend	33	2.1%
Traverse City	134	8.4%
Duluth	2	0.1%
Green Bay	2	0.1%
Total	1603	100.0%

25. Age + Income

	Freq.	%
<65 <\$40k	238	14.8%
<65 \$40k-\$69k	226	14.1%
<65 \$70k-\$99k	183	11.4%
<65 \$100k+	392	24.4%
65+ <\$40k	130	8.1%
65+ \$40k-\$69k	152	9.5%
65+ \$70k-\$99k	90	5.6%
65+ \$100k+	90	5.6%
Unsure	103	6.4%
Total	1603	100.0%

26. Gender + Age

	Freq.	%
F 18 - 34	153	9.5%



F 35 - 49	158	9.9%
F 50 - 64	256	16.0%
F 65+	298	18.6%
M 18 - 34	117	7.3%
M 35 - 49	178	11.1%
M 50 - 64	228	14.2%
M 65+	215	13.4%
Total	1603	100.0%

27. Race + Gender

	Freq.	%
White Female	694	43.3%
White Male	601	37.5%
Asian Female	4	0.3%
Asian Male	6	0.4%
Black Female	112	7.0%
Black Male	80	5.0%
Hispanic Female	23	1.5%
Hispanic Male	18	1.1%
Other Female	25	1.6%
Other Male	20	1.2%
Unsure	19	1.2%
Total	1603	100.0%

28. Gender + Education

	Freq.	%
Female At least College	318	19.9%
Female No degree	545	34.0%
Male At least College	340	21.2%
Male No degree	391	24.4%
Unsure	8	0.5%
Total	1603	100.0%

METHODOLOGY

This survey was conducted November 1 – 4, 2022, with 1603 likely general election voters. It has a margin of error of $\pm 2.45\%$. Known registered voters were interviewed via IVR, SMS, and email invitation. This survey was weighted to a likely general election voter universe.

ABOUT THE FIRM

[Cygnal](#) is an award-winning international polling, public opinion, and predictive analytics firm that pioneered multi-mode polling, text-to-web collection, and emotive analysis. Cygnal consistently ranks as the most accurate firm, and clients rely on Cygnal’s ability to create intelligence for action. Its team members have worked in 48 states and multiple countries on more than 2,700 corporate, public affairs, and political campaigns.

