

CYGNAL

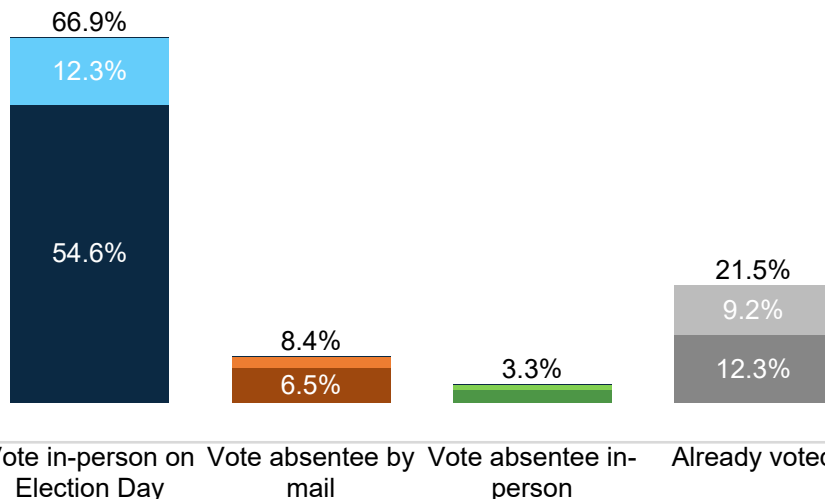
Survey of Likely General Election Voters
Ohio Statewide

October 29 – November 1, 2022

n=1,520 | $\pm 2.51\%$

Vote Method

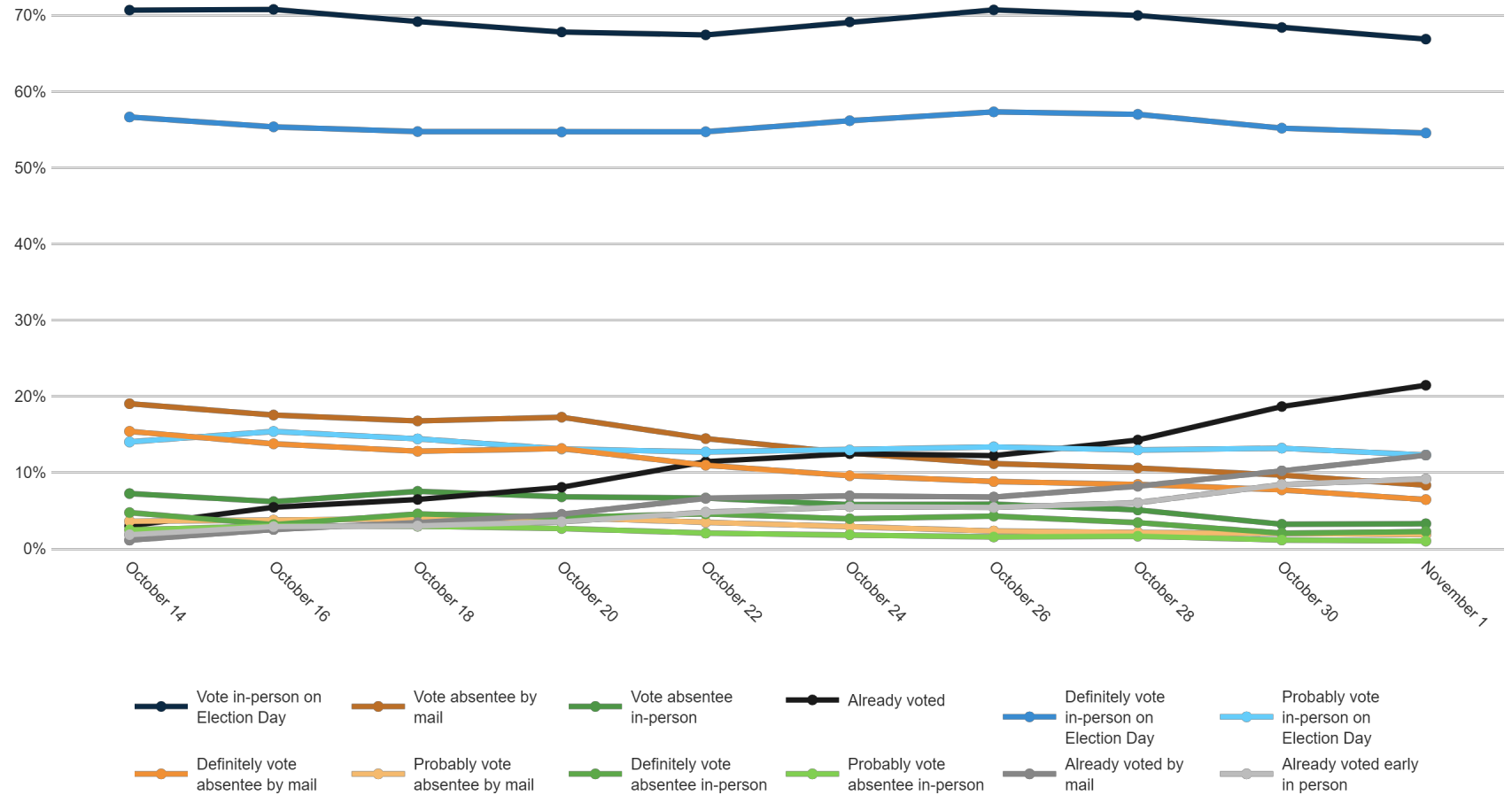
Fielding Date **November 1**



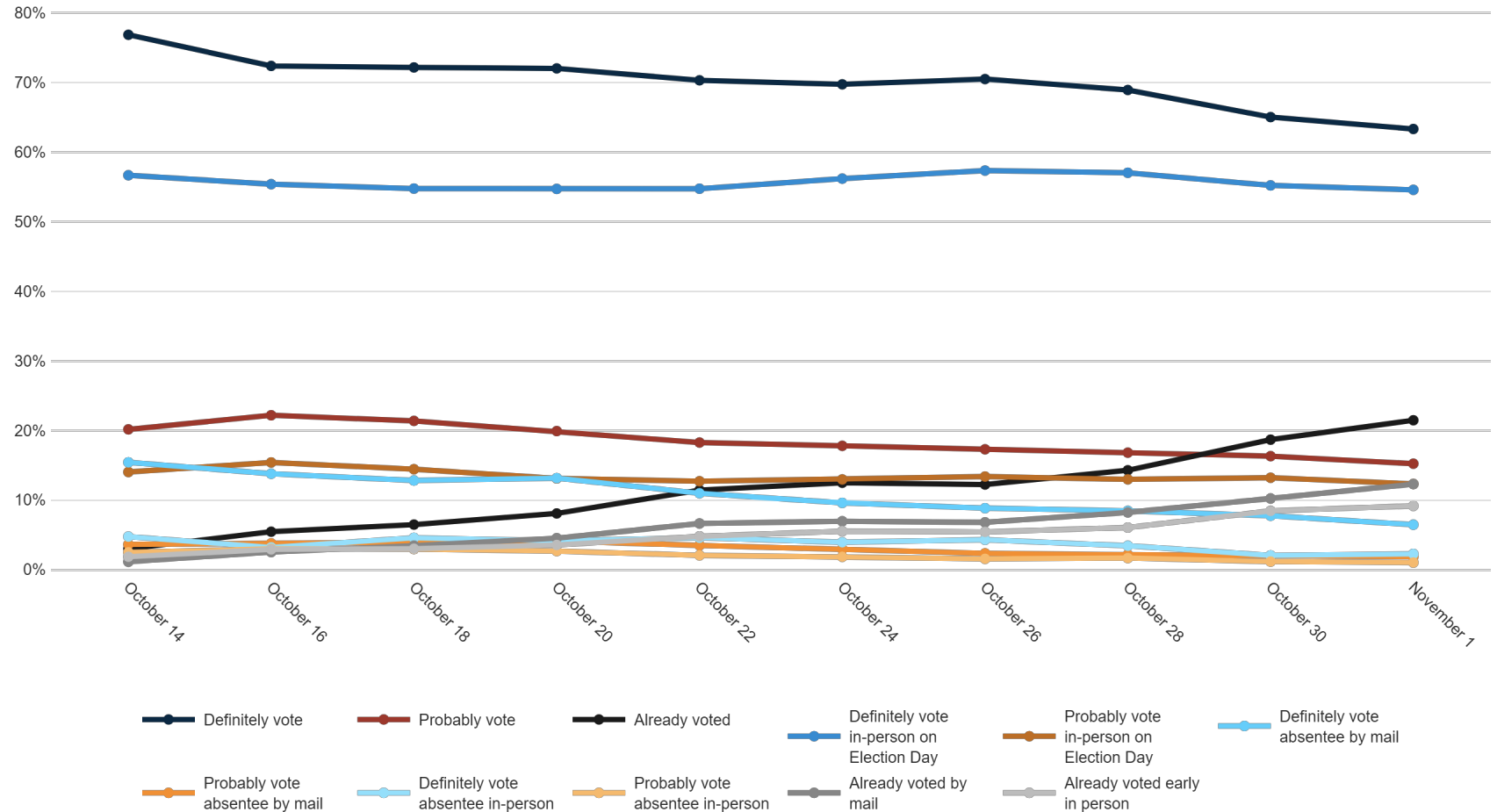
	F 18 - 34	F 35 - 49	F 50 - 64	F 65+	M 18 - 34	M 35 - 49	M 50 - 64	M 65+	Dayton/ NW OH	Cincinnati	Columbus/C OH	Cleveland/Akron	Republican	Democrat	Unaffiliated	White	Black	Minorities	F College	F No College	M College	M No College	<\$70k	\$70k+	Generic Undec	US Sen Undec	Gov Undec	Trump '20	Biden '20	Always Votes	Usually Votes	Smtms Votes	Rarely Votes
Vote in-person on Election Day	71%	73%	68%	53%	75%	78%	73%	58%	67%	64%	70%	66%	73%	57%	69%	68%	59%	61%	65%	64%	68%	72%	65%	69%	76%	83%	84%	75%	56%	67%	67%	68%	72%
Vote absentee by mail	10%	10%	10%	11%	5%	4%	7%	8%	6%	11%	7%	10%	6%	11%	9%	8%	11%	6%	11%	10%	7%	6%	10%	7%	13%	8%	7%	6%	11%	8%	8%	8%	15%
Vote absentee in-person	3%	3%	4%	4%	2%	4%	5%	0%	4%	3%	3%	4%	3%	4%	3%	3%	2%	3%	3%	4%	4%	1%	4%	3%	5%	5%	4%	2%	4%	3%	5%	7%	6%
Already voted	16%	14%	18%	31%	19%	14%	16%	34%	23%	23%	20%	21%	18%	28%	19%	21%	27%	30%	22%	21%	22%	21%	21%	6%	5%	5%	17%	29%	23%	20%	17%	8%	
Definitely vote in-person on Election Day	48%	61%	57%	44%	56%	67%	65%	45%	53%	49%	60%	54%	61%	45%	55%	56%	43%	50%	55%	50%	59%	58%	49%	61%	49%	53%	56%	64%	45%	59%	46%	38%	37%
Probably vote in-person on Election Day	23%	12%	11%	10%	19%	11%	8%	12%	13%	15%	10%	12%	11%	12%	14%	12%	15%	11%	10%	14%	9%	14%	17%	8%	27%	30%	28%	11%	11%	7%	21%	30%	34%
Definitely vote absentee by mail	7%	6%	9%	8%	3%	3%	5%	7%	4%	8%	5%	8%	5%	9%	7%	6%	10%	6%	9%	8%	5%	5%	7%	6%	7%	6%	6%	5%	9%	7%	5%	7%	5%
Probably vote absentee by mail	3%	3%	1%	2%	2%	1%	2%	1%	2%	3%	2%	1%	1%	3%	2%	2%	2%	0%	2%	3%	2%	1%	3%	1%	6%	1%	2%	1%	3%	1%	3%	1%	9%
Definitely vote absentee in-person	2%	2%	3%	4%	0%	2%	3%	0%	2%	2%	2%	3%	2%	3%	2%	2%	3%	2%	3%	3%	1%	3%	2%	4%	4%	3%	2%	3%	2%	3%	4%	0%	
Probably vote absentee in-person	1%	0%	1%	1%	2%	2%	1%	0%	2%	1%	1%	1%	1%	1%	1%	1%	0%	0%	1%	1%	1%	1%	1%	2%	1%	1%	0%	2%	0%	2%	3%	6%	
Already voted by mail	6%	10%	10%	21%	8%	8%	7%	21%	11%	13%	11%	14%	10%	16%	13%	12%	16%	19%	12%	14%	10%	13%	15%	10%	5%	3%	3%	9%	18%	13%	14%	4%	4%
Already voted early in person	9%	4%	8%	11%	11%	6%	9%	14%	12%	10%	9%	7%	8%	12%	6%	9%	11%	12%	10%	8%	12%	8%	7%	11%	1%	2%	2%	8%	11%	10%	6%	13%	3%

How do you plan to vote in the November general election for U.S. Senate, Governor, and state legislature?

Trend: Vote Method



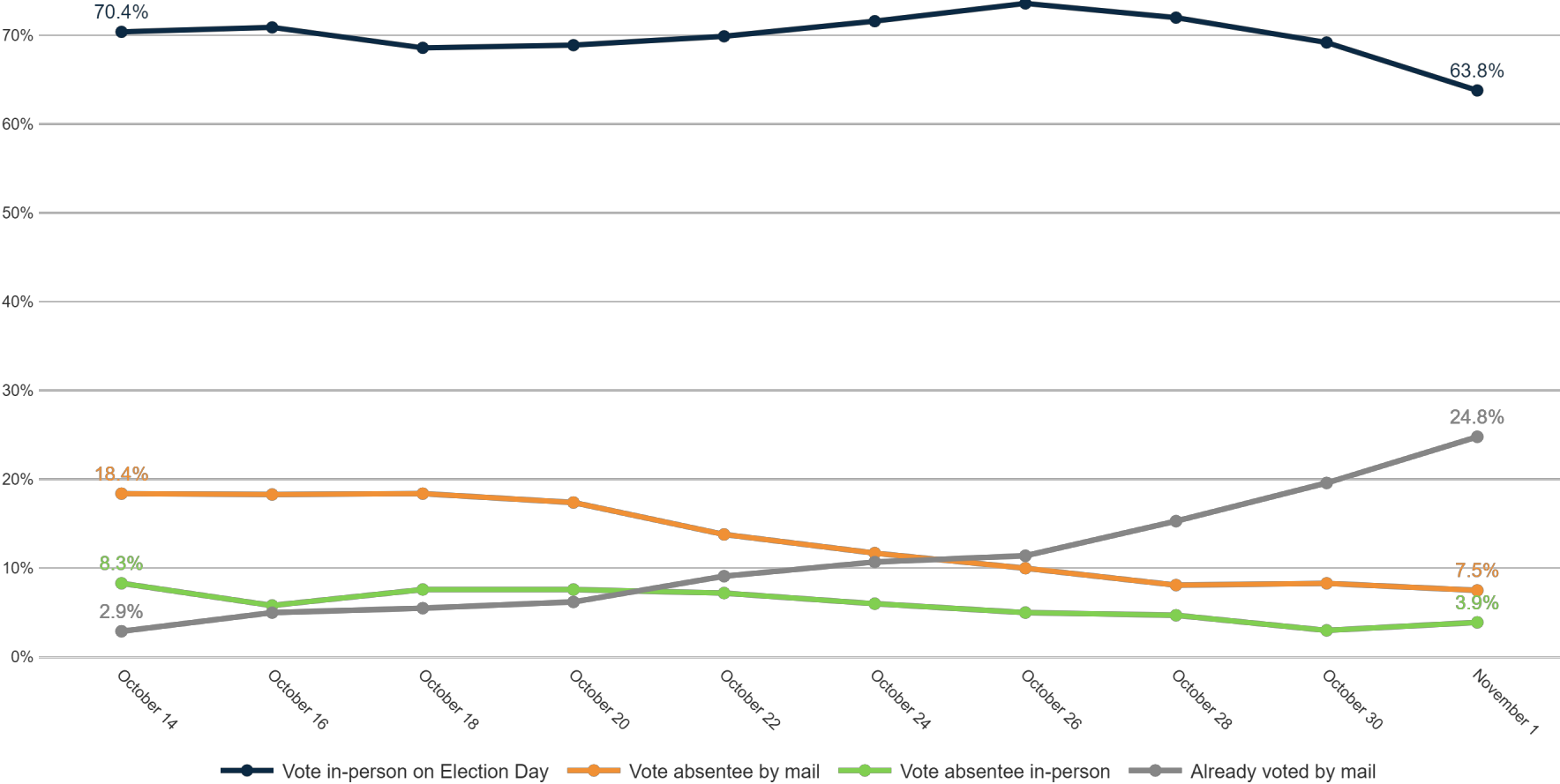
Trend: Vote Method (Definitely/ Probably Vote)



MRP Estimates: Vote Method

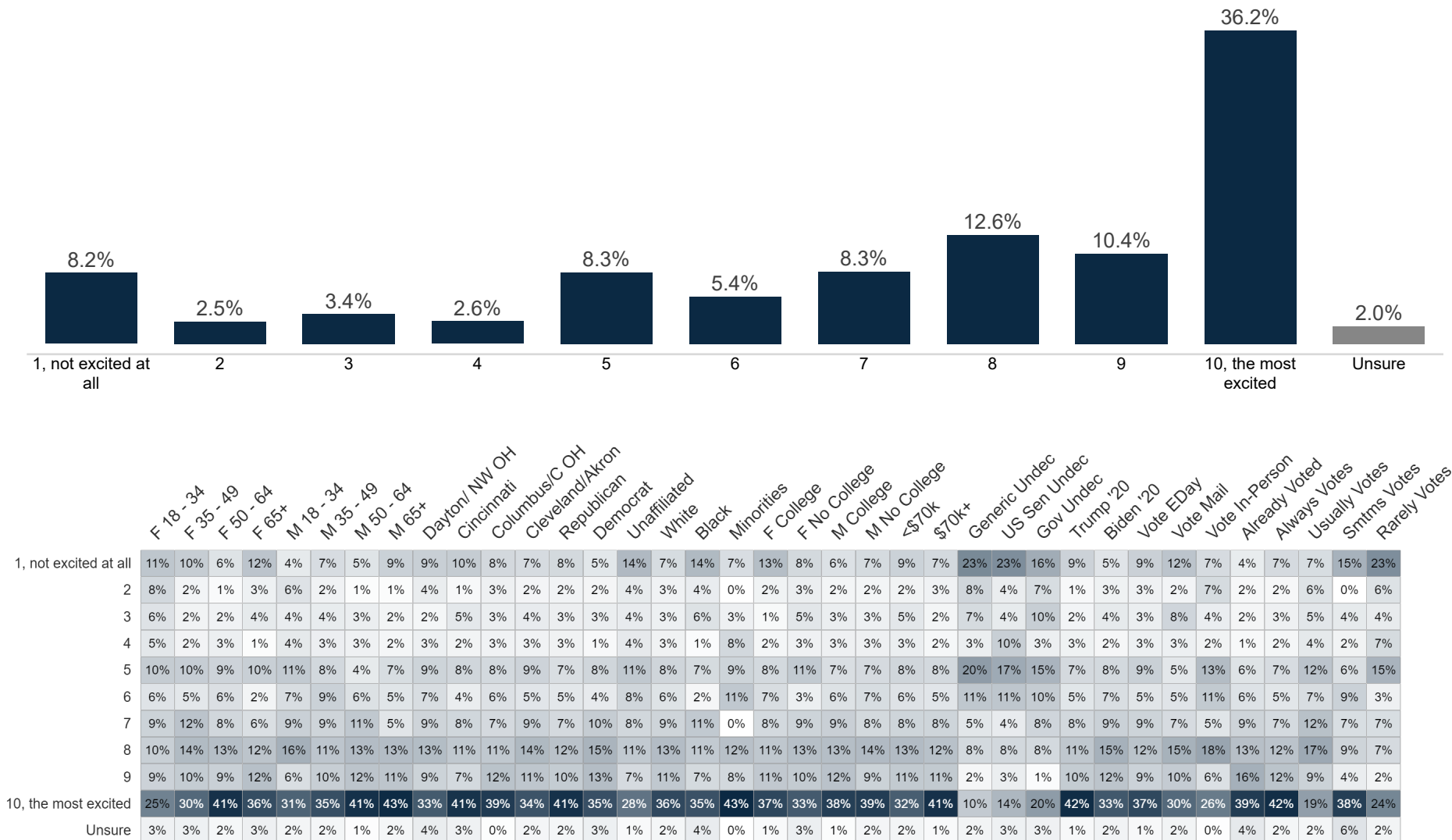
Voter Group

Toledo



Enthusiasm

Fielding Date **November 1**

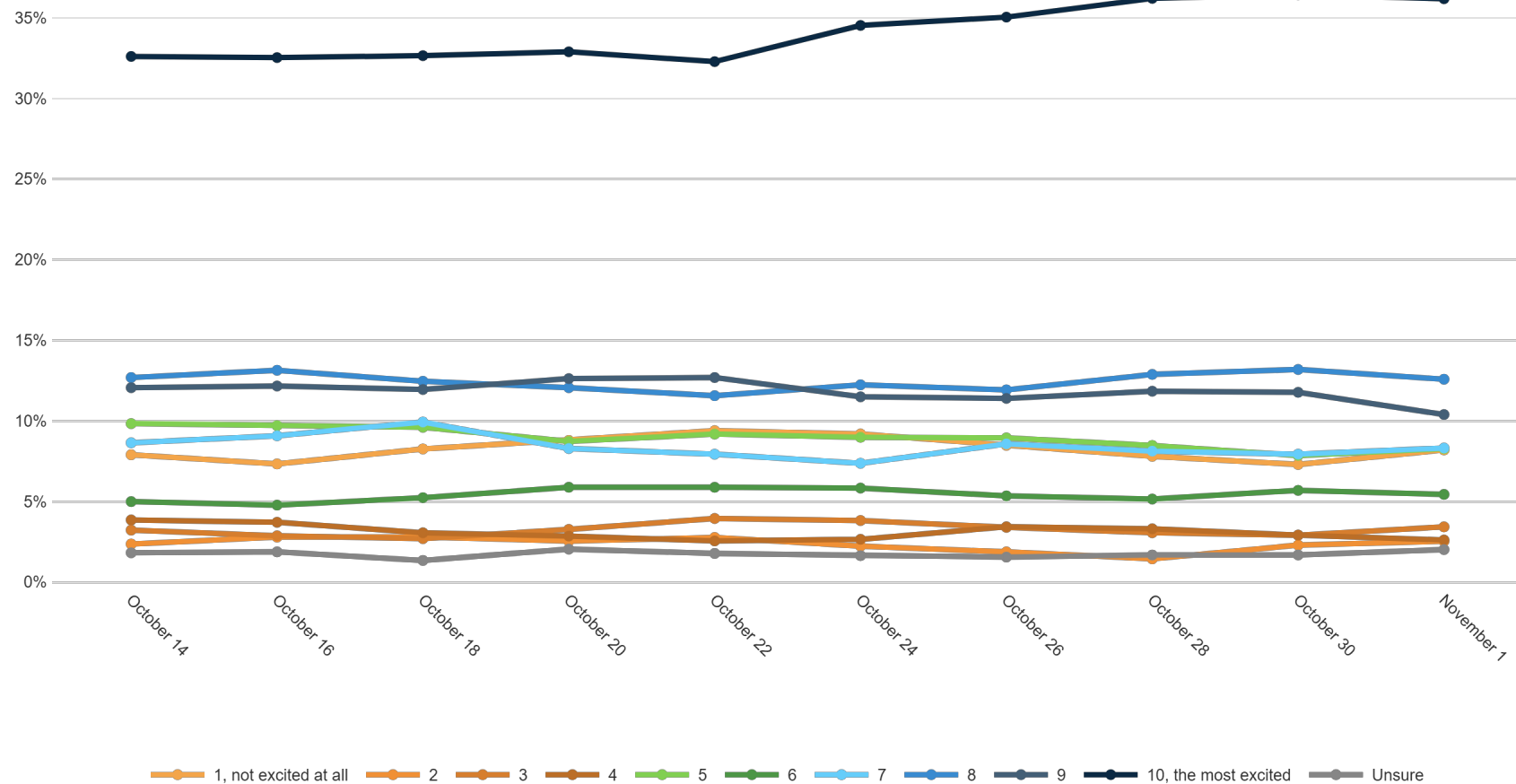


How excited are you to vote in the November general election for Governor, Congress, and state legislature on a scale of 1 to 10, with 1 being not excited at all and 10 being very excited?



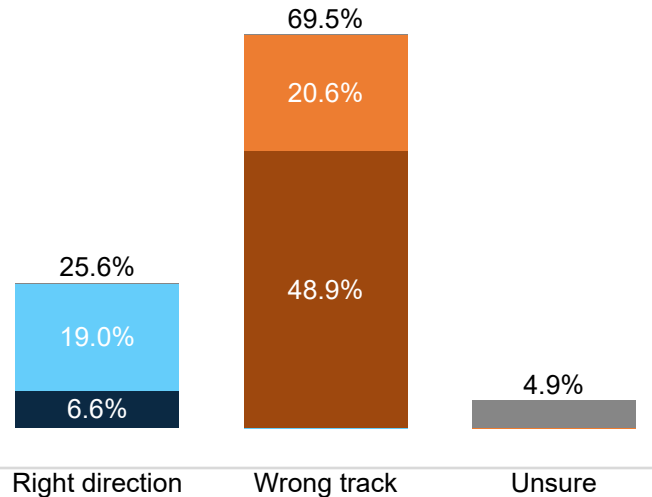
CYGNAL

Trend: Enthusiasm



US Right Direction/ Wrong Track

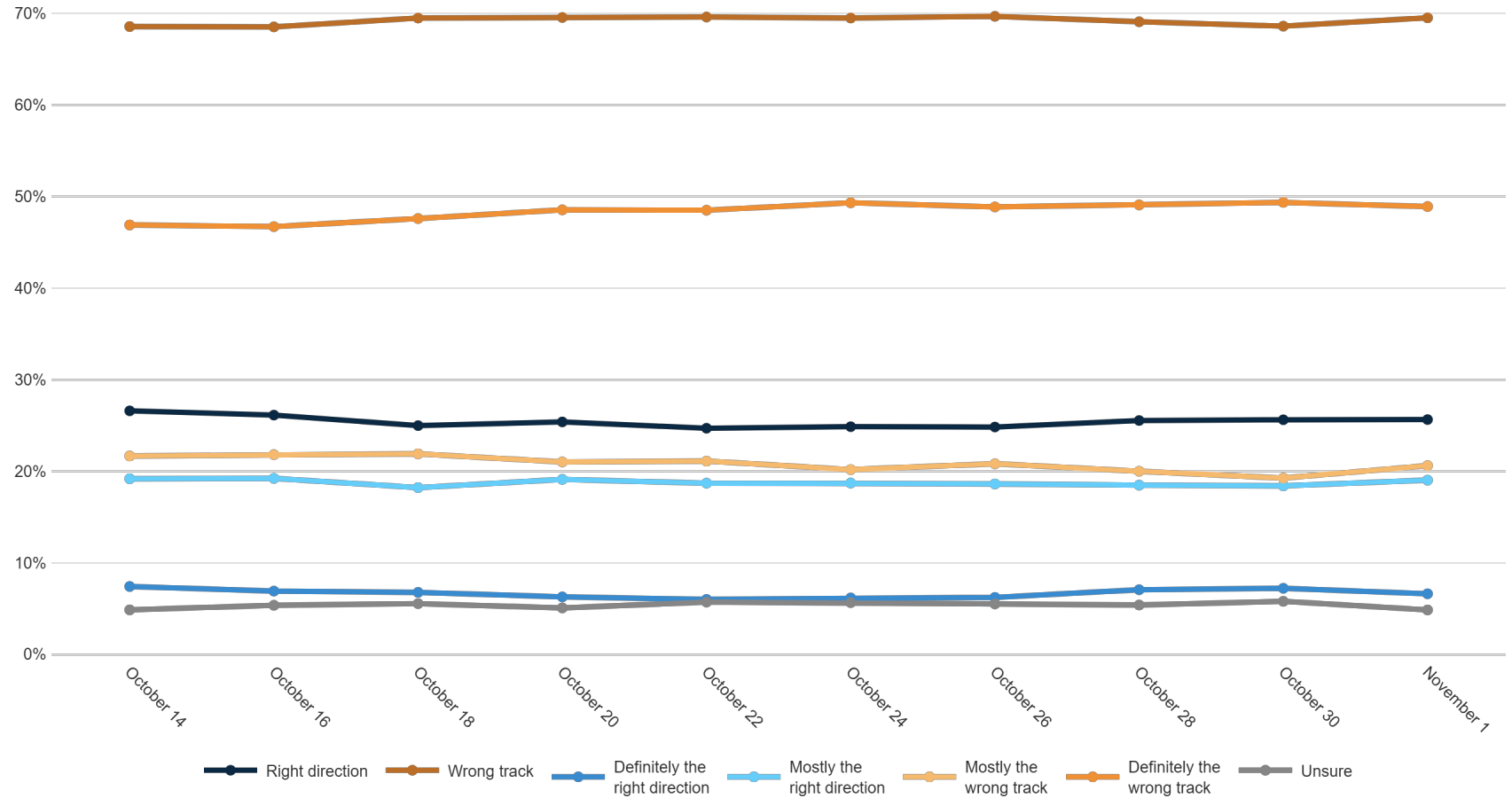
Fielding Date **November 1**



		F 18 - 34	F 35 - 49	F 50 - 64	F 65+	M 18 - 34	M 35 - 49	M 50 - 64	M 65+	Dayton/ NW OH	Cincinnati	Columbus/C OH	Cleveland/Akron	Republican	Democrat	Unaffiliated	White	Black	Minorities	F College	F No College	M College	M No College	<\$70k	\$70k+	Generic Undec	US Sen Undec	Gov Undec	Trump '20	Biden '20	Vote EDay	Vote Mail	Vote In-Person	Already Voted	Usually Votes	Smtms Votes	Rarely Votes	
Definitely the right direction	Right direction	29%	23%	28%	27%	30%	24%	21%	25%	22%	21%	30%	26%	8%	51%	24%	23%	52%	26%	30%	25%	30%	20%	26%	26%	10%	10%	12%	5%	53%	21%	28%	30%	37%	25%	29%	21%	22%
	Wrong track	63%	69%	67%	71%	62%	69%	76%	73%	73%	74%	66%	68%	91%	40%	70%	73%	40%	57%	65%	70%	65%	76%	68%	70%	79%	79%	76%	94%	38%	74%	66%	67%	58%	71%	64%	74%	70%
	Definitely the right direction	9%	5%	4%	8%	10%	7%	5%	6%	4%	5%	9%	7%	3%	13%	4%	5%	16%	13%	6%	7%	8%	5%	6%	7%	0%	0%	0%	2%	12%	6%	5%	11%	9%	6%	7%	11%	4%
	Mostly the right direction	20%	18%	23%	19%	20%	17%	16%	20%	19%	16%	21%	19%	5%	38%	20%	18%	36%	13%	24%	18%	22%	15%	20%	19%	10%	10%	12%	3%	41%	16%	23%	19%	28%	19%	21%	10%	18%
	Mostly the wrong track	26%	24%	21%	17%	29%	23%	17%	16%	22%	21%	18%	22%	15%	26%	25%	21%	21%	14%	25%	19%	23%	17%	22%	20%	44%	39%	28%	15%	27%	20%	32%	22%	17%	19%	23%	21%	29%
	Definitely the wrong track	37%	45%	46%	54%	34%	46%	59%	57%	51%	52%	49%	47%	76%	14%	45%	52%	18%	43%	40%	51%	42%	59%	46%	50%	35%	40%	49%	80%	11%	54%	34%	45%	41%	52%	40%	53%	41%
Unsure	Unsure	9%	8%	5%	2%	8%	6%	3%	2%	5%	6%	4%	5%	1%	9%	6%	4%	8%	17%	5%	5%	5%	4%	5%	4%	11%	11%	12%	0%	9%	5%	6%	3%	5%	4%	8%	5%	8%

Generally speaking, would you say things in the United States are headed in the right direction or off on the wrong track?

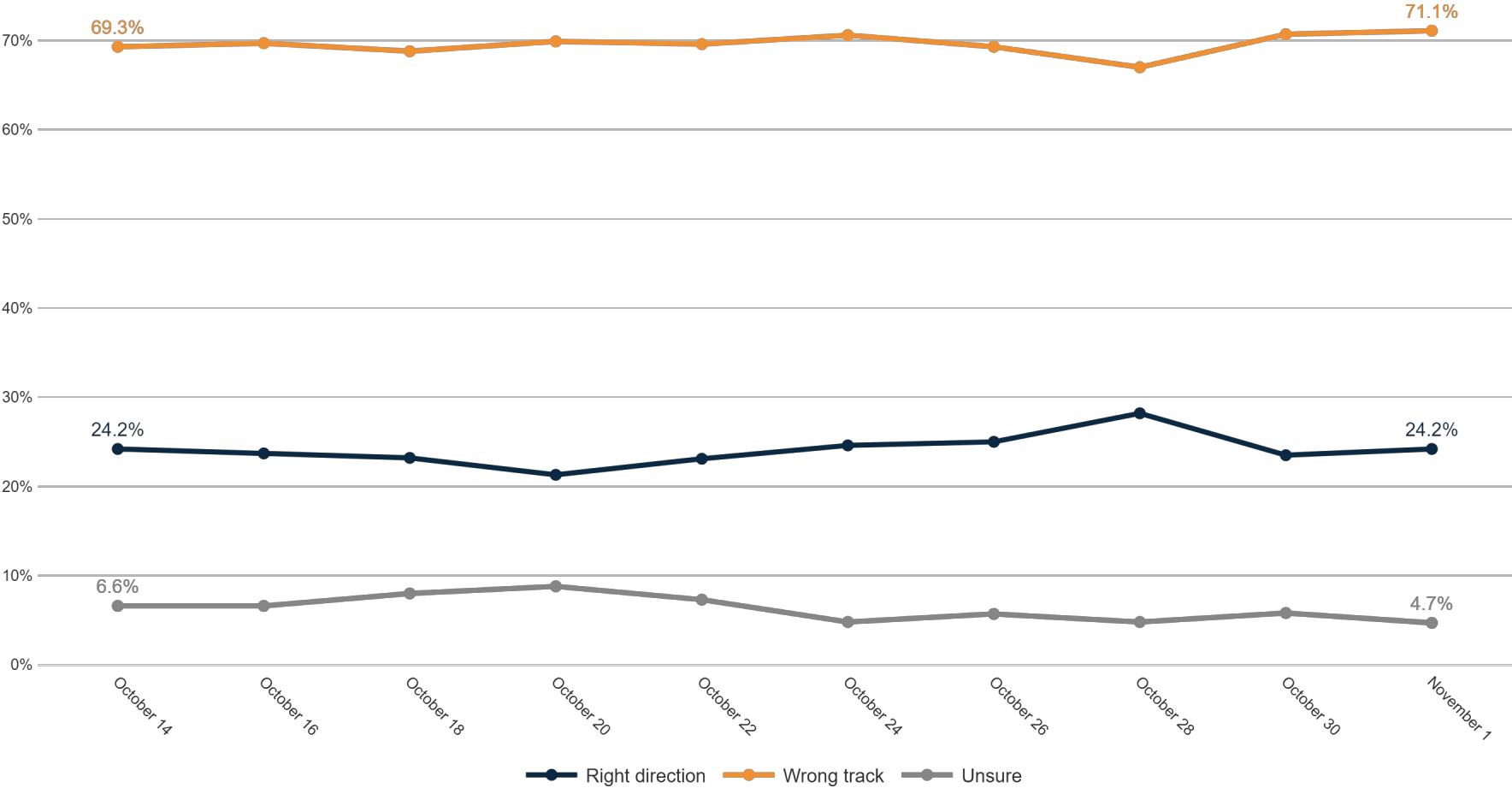
Trend: US Right Direction/ Wrong Track



MRP Estimates: US RD/WT

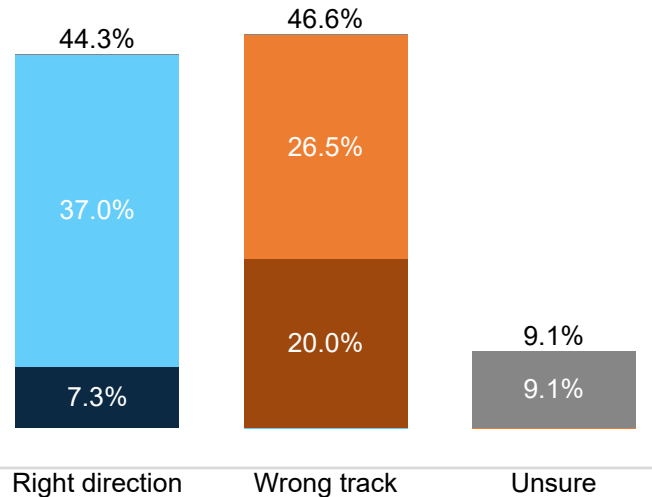
Voter Group

Toledo



OH Right Direction/ Wrong Track

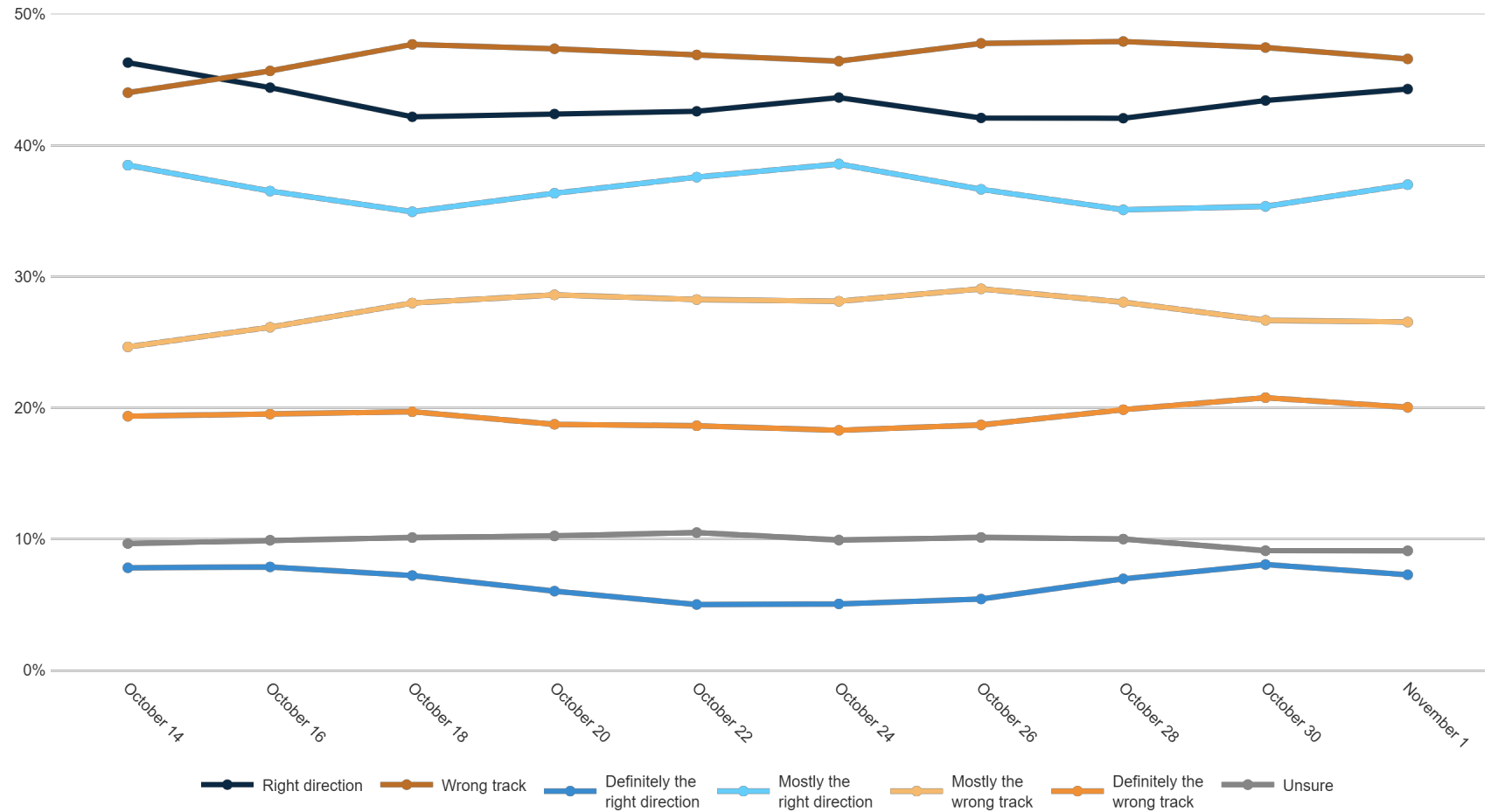
Fielding Date **November 1**



		Age								City								Race								Education								Income								Political Affiliation																																	
		F 18 - 34		F 35 - 49		F 50 - 64		F 65+		M 18 - 34		M 35 - 49		M 50 - 64		M 65+		Dayton/ NW OH		Cincinnati		Columbus/C OH		Cleveland/Akron		Republican		Democrat		Unaffiliated		White		Black		Minorities		F College		F No College		M College		M No College		<\$70k		\$70k+		Generic Undec		US Sen Undec		Gov Undec		Trump '20		Biden '20		Vote EDay		Vote Mail		Vote In-Person		Already Voted		Always Voted		Usually Votes		Smtms Votes		Rarely Votes	
Direction	Right direction	34%	34%	34%	50%	48%	41%	55%	54%	48%	45%	47%	40%	57%	33%	37%	44%	49%	42%	36%	41%	48%	52%	46%	43%	28%	25%	18%	53%	35%	45%	40%	47%	44%	46%	43%	37%	27%																																					
	Wrong track	57%	59%	56%	40%	44%	49%	39%	36%	42%	46%	46%	50%	36%	57%	51%	47%	39%	42%	56%	49%	45%	39%	45%	49%	54%	52%	59%	39%	56%	47%	48%	45%	46%	47%	43%	54%	60%																																					
	Definitely the right direction	10%	6%	3%	7%	15%	6%	8%	7%	6%	9%	8%	7%	9%	7%	4%	7%	11%	19%	7%	6%	8%	9%	7%	8%	3%	4%	2%	8%	6%	7%	10%	1%	8%	7%	8%	9%	9%																																					
	Mostly the right direction	24%	28%	31%	42%	32%	36%	46%	47%	42%	36%	39%	33%	48%	26%	33%	38%	38%	23%	29%	35%	40%	43%	39%	35%	25%	21%	16%	45%	28%	38%	30%	46%	36%	39%	35%	28%	18%																																					
	Mostly the wrong track	32%	33%	35%	24%	28%	28%	17%	20%	24%	28%	26%	27%	21%	32%	29%	27%	22%	19%	36%	27%	26%	19%	25%	28%	39%	33%	33%	22%	32%	25%	32%	27%	28%	26%	27%	28%	37%																																					
	Definitely the wrong track	25%	26%	21%	16%	17%	21%	22%	16%	18%	18%	20%	22%	16%	25%	21%	20%	18%	23%	19%	22%	18%	20%	20%	21%	15%	19%	26%	17%	24%	21%	17%	18%	18%	21%	15%	25%	22%																																					
Unsure	Unsure	9%	8%	10%	11%	8%	9%	7%	10%	10%	9%	7%	10%	7%	9%	12%	9%	11%	16%	8%	10%	8%	9%	9%	8%	18%	23%	22%	8%	9%	9%	11%	8%	9%	7%	14%	9%	13%																																					

Generally speaking, would you say things in Ohio are headed in the right direction or off on the wrong track?

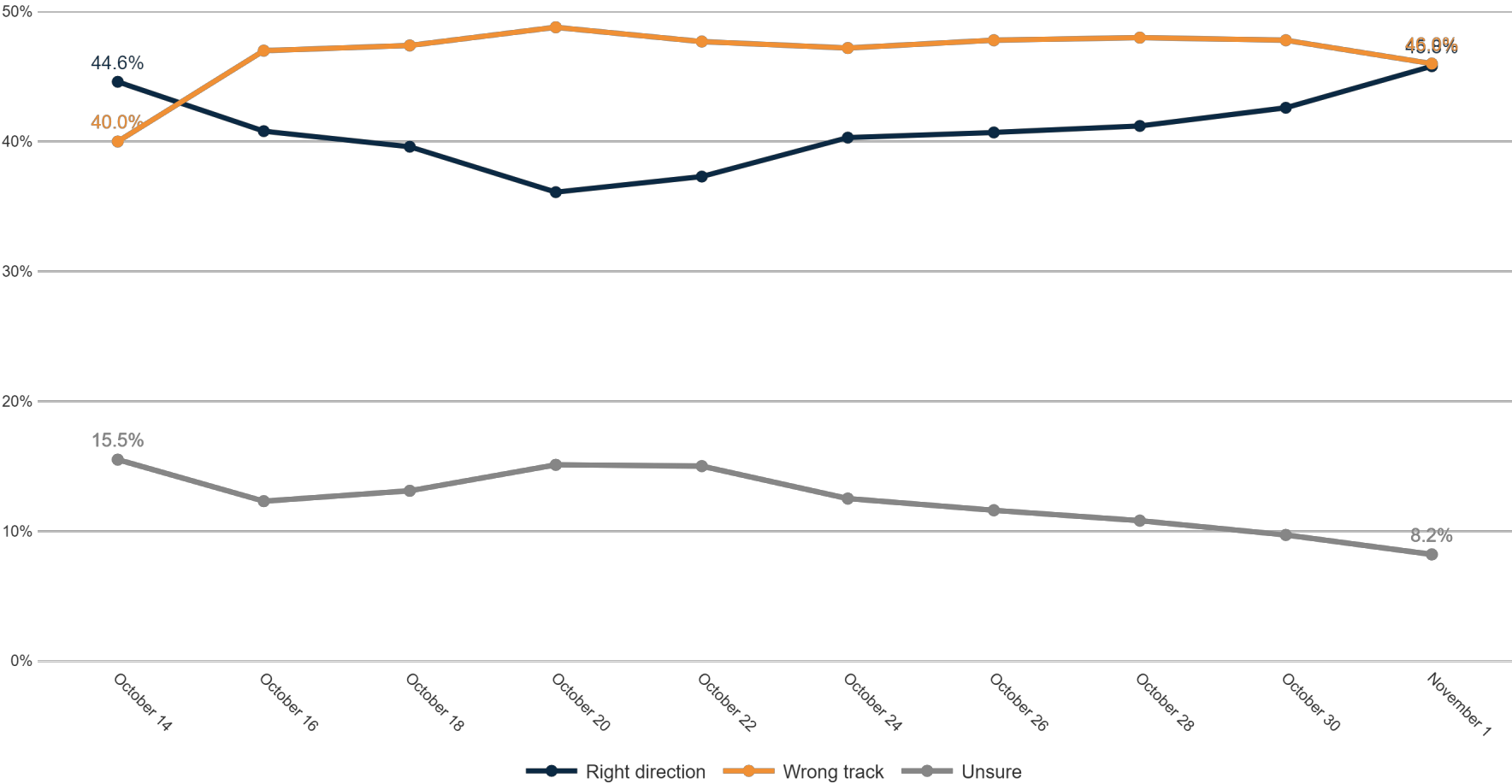
Trend: OH Right Direction/ Wrong Track



MRP Estimates: OH RD/WT

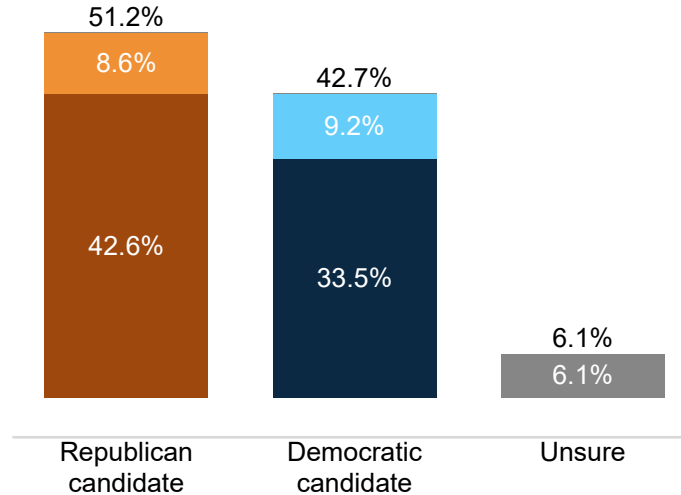
Voter Group

Toledo



Generic Ballot

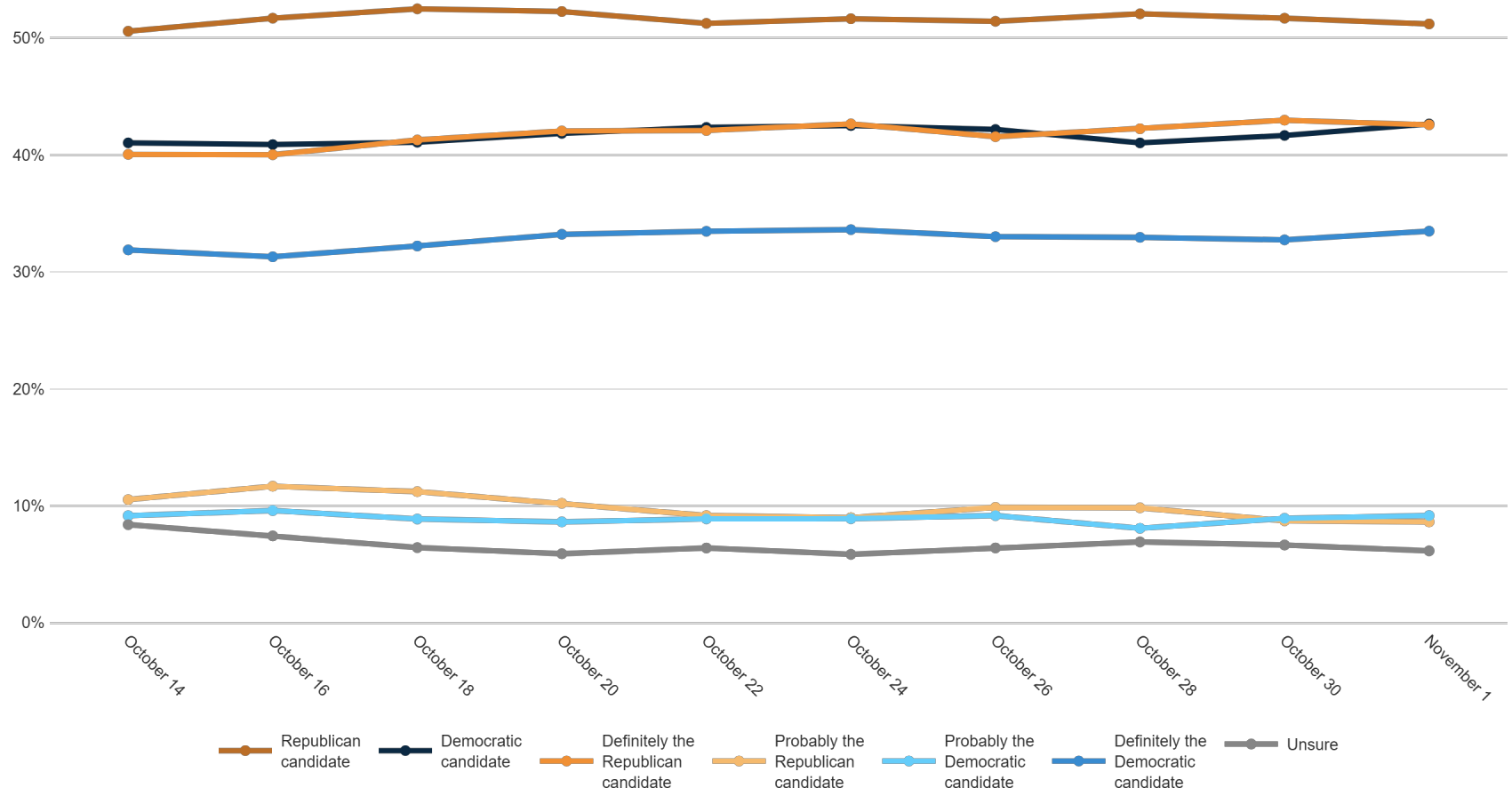
Fielding Date **November 1**



	F 18 - 34	F 35 - 49	F 50 - 64	F 65+	M 18 - 34	M 35 - 49	M 50 - 64	M 65+	Dayton/ NW OH	Cincinnati	Columbus/C OH	Cleveland/Akron	Republican	Democrat	Unaffiliated	White	Black	Minorities	F College	F No College	M College	M No College	<\$70k	\$70k+	US Sen Undec	Gov Undec	Trump '20	Biden '20	Vote EDay	Vote Mail	Vote In-Person	Already Voted	Always Votes	Usually Votes	Smtms Votes	Rarely Votes
Republican candidate	40%	44%	47%	58%	40%	47%	60%	61%	54%	50%	52%	49%	90%	5%	43%	55%	21%	54%	39%	54%	44%	61%	47%	55%	29%	34%	90%	5%	57%	31%	39%	44%	53%	44%	61%	42%
Democratic candidate	54%	50%	45%	38%	52%	42%	35%	37%	38%	42%	43%	45%	7%	94%	41%	40%	68%	45%	54%	40%	48%	34%	45%	41%	16%	26%	6%	90%	36%	59%	50%	54%	42%	49%	25%	32%
Definitely the Republican candidate	28%	36%	37%	52%	31%	40%	50%	52%	43%	44%	43%	41%	78%	2%	30%	46%	16%	35%	33%	45%	37%	51%	38%	46%	14%	21%	78%	2%	47%	23%	37%	37%	46%	31%	49%	30%
Probably the Republican candidate	12%	8%	10%	6%	9%	7%	10%	9%	10%	6%	9%	8%	12%	2%	12%	9%	5%	19%	6%	10%	7%	10%	9%	8%	16%	13%	12%	3%	10%	9%	2%	7%	7%	13%	12%	13%
Probably the Democratic candidate	18%	9%	7%	5%	18%	12%	9%	4%	7%	10%	9%	10%	3%	14%	15%	8%	19%	16%	8%	9%	10%	10%	12%	6%	10%	11%	4%	16%	9%	13%	17%	7%	7%	15%	7%	15%
Definitely the Democratic candidate	37%	41%	38%	32%	34%	30%	26%	32%	31%	33%	34%	35%	4%	80%	27%	32%	50%	28%	45%	31%	38%	24%	33%	35%	6%	15%	3%	74%	27%	47%	33%	48%	35%	34%	18%	17%
Unsure	6%	6%	8%	5%	8%	11%	5%	3%	8%	7%	5%	6%	3%	2%	16%	5%	11%	1%	7%	5%	8%	5%	8%	4%	54%	41%	4%	4%	7%	10%	10%	2%	4%	7%	13%	26%

If the election was held today, and you had to make a choice, would you vote for the Republican or Democratic candidate for Congress?

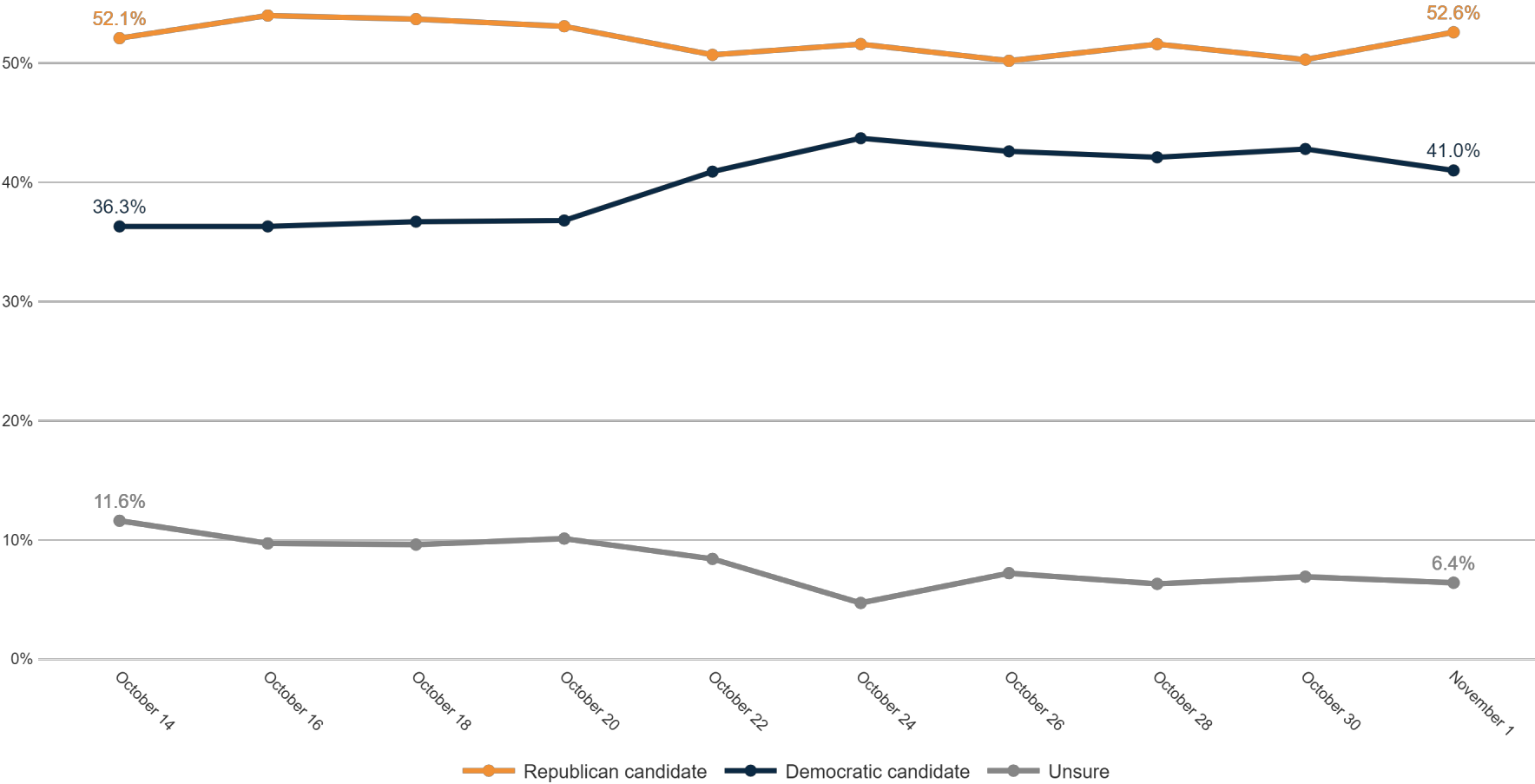
Trend: Generic Ballot



MRP Estimates: Generic Ballot

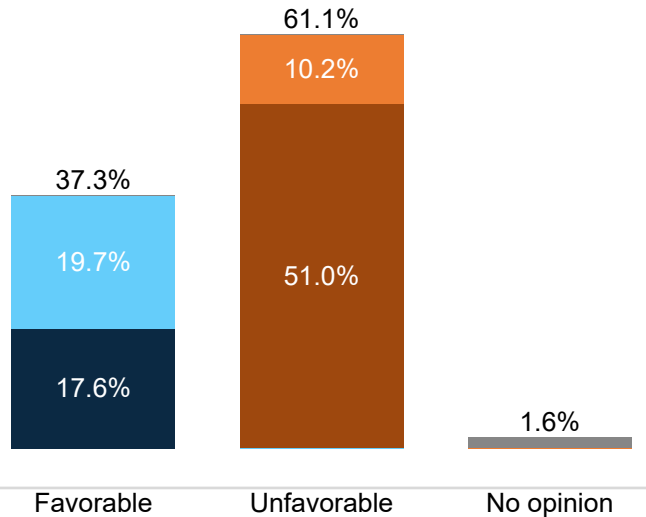
Voter Group

Toledo



Biden Image

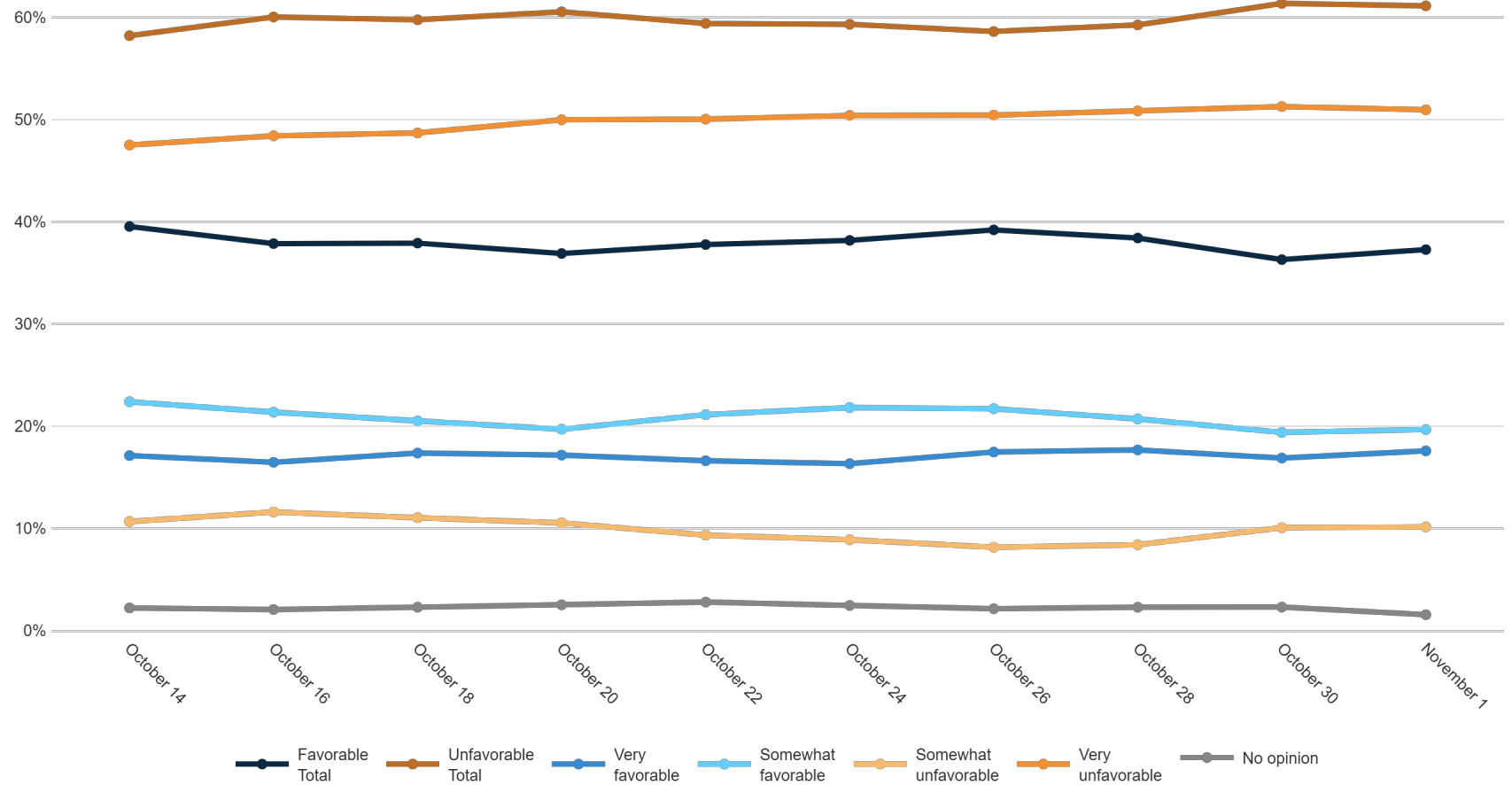
Fielding Date **November 1**



	F 18 - 34	F 35 - 49	F 50 - 64	F 65+	M 18 - 34	M 35 - 49	M 50 - 64	M 65+	Dayton/ NW OH	Cincinnati	Columbus/C OH	Cleveland/Akron	Republican	Democrat	Unaffiliated	White	Black	Minorities	F College	F No College	M College	M No College	<\$70k	\$70k+	Generic Undec	US Sen Undec	Gov Undec	Trump '20	Biden '20	Vote EDay	Vote Mail	Vote In-Person	Already Voted	Usually Voted	Smtms Voted	Rarely Votes	
Favorable Total	41%	42%	41%	35%	42%	34%	32%	36%	33%	40%	37%	39%	7%	82%	34%	34%	64%	51%	49%	33%	44%	28%	38%	38%	18%	10%	23%	4%	81%	32%	49%	33%	51%	37%	43%	27%	28%
Unfavorable Total	57%	55%	57%	65%	58%	62%	67%	63%	65%	60%	62%	59%	93%	16%	64%	65%	32%	46%	50%	65%	54%	70%	60%	61%	71%	79%	67%	95%	17%	66%	49%	67%	49%	62%	55%	69%	63%
Very favorable	9%	13%	21%	21%	20%	13%	17%	21%	10%	20%	19%	20%	3%	41%	14%	16%	31%	24%	23%	14%	21%	15%	18%	18%	3%	2%	2%	2%	38%	15%	15%	13%	27%	20%	14%	15%	6%
Somewhat favorable	32%	29%	20%	13%	22%	21%	15%	15%	23%	20%	18%	19%	4%	42%	20%	18%	33%	27%	26%	19%	23%	13%	20%	20%	15%	8%	21%	2%	43%	17%	34%	20%	24%	17%	29%	11%	23%
Somewhat unfavorable	20%	10%	8%	7%	17%	14%	9%	4%	13%	9%	9%	10%	8%	9%	16%	11%	9%	6%	10%	10%	11%	9%	12%	8%	37%	35%	24%	8%	10%	10%	16%	20%	6%	8%	14%	9%	30%
Very unfavorable	36%	45%	49%	58%	40%	48%	58%	59%	52%	51%	53%	49%	85%	8%	47%	54%	24%	41%	40%	54%	43%	61%	48%	53%	34%	44%	43%	88%	7%	56%	33%	47%	43%	54%	41%	59%	33%
No opinion	2%	3%	2%	0%	1%	4%	1%	1%	2%	0%	1%	2%	1%	1%	2%	1%	4%	3%	1%	2%	1%	2%	2%	1%	12%	11%	11%	1%	2%	2%	2%	0%	1%	1%	2%	5%	8%

Do you have a favorable or unfavorable opinion of Joe Biden?

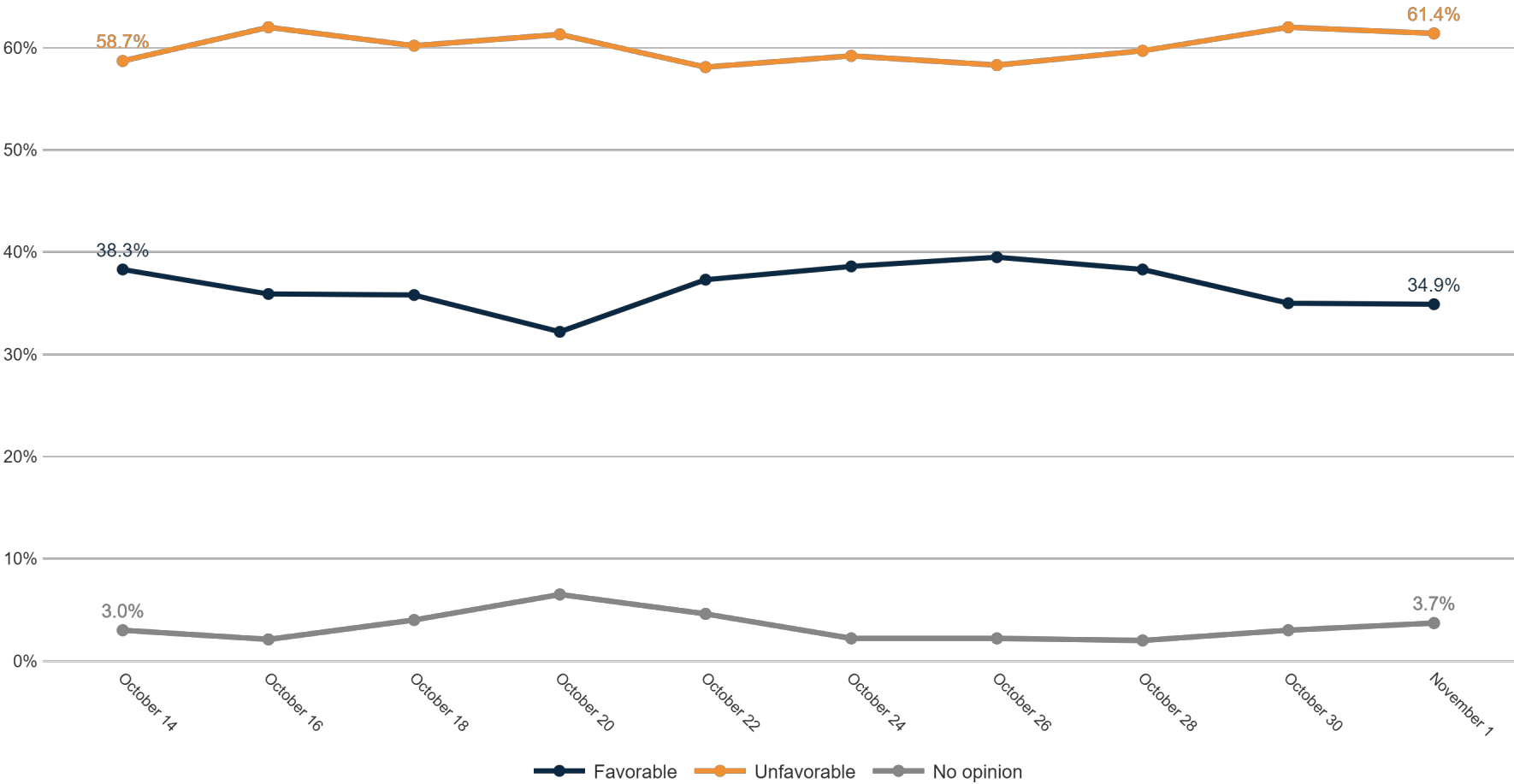
Trend: Biden Image



MRP Estimates: Biden Image

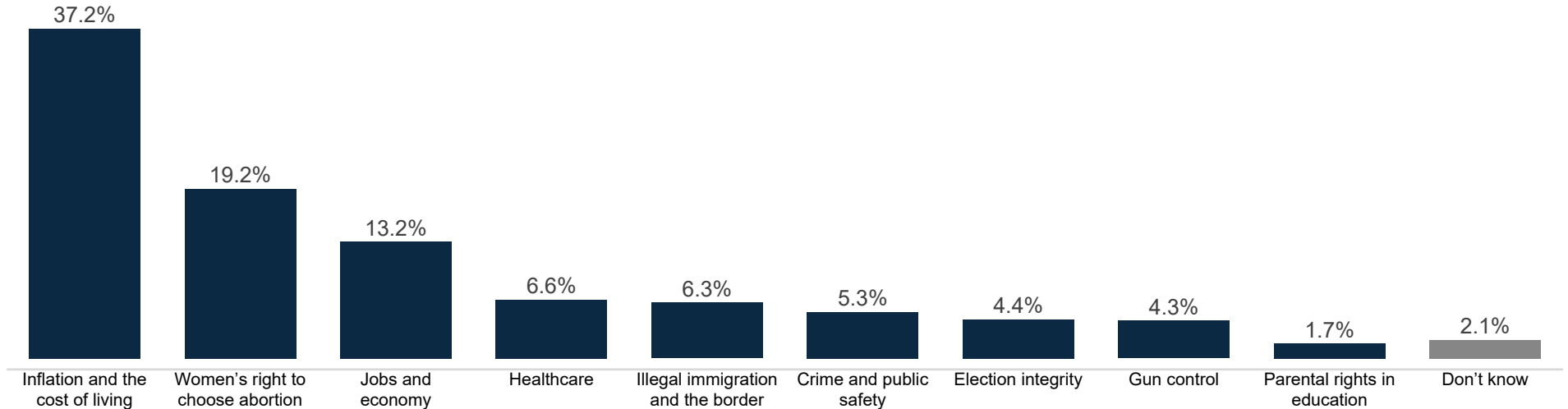
Voter Group

Toledo



Top Priority

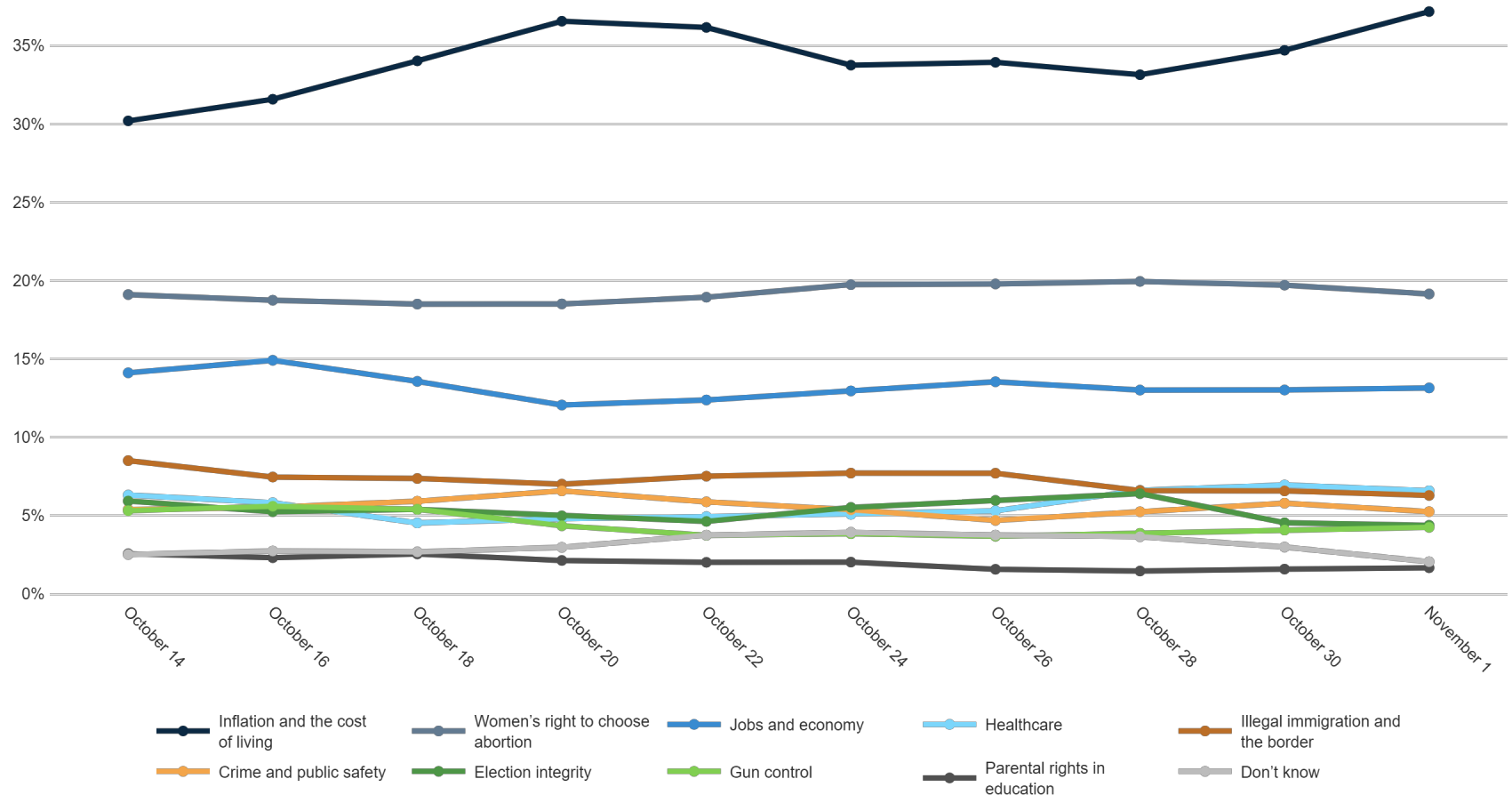
Fielding Date **November 1**



	F 18 - 34	F 35 - 49	F 50 - 64	F 65+	M 18 - 34	M 35 - 49	M 50 - 64	M 65+	Dayton/ NW OH	Cincinnati	Columbus/C OH	Cleveland/Akron	Republican	Democrat	Unaffiliated	White	Black	Minorities	F College	F No College	M College	M No College	<\$70k	\$70k+	Generic Undec	US Sen Undec	Gov Undec	Trump '20	Biden '20	Vote E/Day	Vote Mail	Vote In-Person	Already Voted	Always Voted	Usually Voted	Smtms Votes	Rarely Votes
Inflation and the cost of living	26%	33%	34%	44%	35%	37%	41%	40%	37%	36%	36%	39%	52%	16%	38%	38%	30%	36%	32%	38%	36%	42%	39%	36%	43%	48%	39%	53%	18%	39%	31%	33%	34%	37%	37%	39%	35%
Women's right to choose abortion	30%	29%	28%	16%	18%	14%	12%	11%	20%	19%	19%	19%	3%	39%	23%	19%	20%	20%	31%	21%	19%	9%	18%	22%	9%	10%	9%	4%	40%	15%	29%	27%	26%	20%	19%	13%	15%
Jobs and economy	10%	10%	12%	9%	18%	20%	21%	9%	12%	13%	12%	15%	16%	11%	12%	14%	12%	10%	9%	11%	19%	15%	13%	14%	20%	20%	14%	16%	10%	15%	13%	15%	8%	14%	10%	10%	17%
Healthcare	12%	6%	5%	2%	10%	7%	5%	11%	8%	7%	8%	5%	3%	12%	5%	7%	7%	10%	7%	5%	8%	8%	7%	6%	6%	3%	5%	4%	11%	6%	9%	2%	7%	6%	8%	7%	6%
Illegal immigration and the border	4%	5%	7%	8%	1%	3%	9%	10%	8%	8%	6%	5%	12%	1%	3%	7%	4%	4%	3%	8%	3%	9%	6%	7%	4%	2%	5%	11%	1%	7%	3%	3%	5%	7%	5%	10%	3%
Crime and public safety	6%	4%	5%	6%	9%	5%	3%	5%	4%	3%	8%	5%	6%	4%	5%	4%	10%	2%	5%	6%	3%	6%	5%	5%	5%	7%	7%	5%	5%	6%	3%	5%	4%	4%	8%	13%	6%
Election integrity	0%	2%	2%	8%	3%	5%	6%	6%	3%	8%	5%	4%	3%	7%	3%	4%	5%	7%	3%	4%	6%	5%	4%	4%	3%	3%	4%	3%	6%	4%	2%	6%	8%	5%	4%	2%	2%
Gun control	5%	6%	4%	6%	3%	3%	3%	4%	4%	4%	4%	4%	1%	8%	5%	4%	9%	10%	6%	4%	3%	4%	4%	4%	1%	0%	5%	1%	8%	3%	6%	5%	6%	4%	4%	4%	8%
Parental rights in education	3%	4%	1%	0%	2%	2%	0%	3%	2%	1%	1%	2%	2%	0%	3%	2%	0%	2%	3%	1%	2%	2%	1%	2%	2%	1%	6%	2%	1%	2%	1%	5%	1%	1%	4%	0%	2%
Don't know	5%	1%	3%	1%	2%	3%	1%	2%	2%	1%	2%	2%	1%	2%	3%	2%	2%	0%	1%	3%	2%	2%	2%	2%	8%	6%	7%	1%	2%	2%	3%	0%	1%	2%	0%	2%	7%

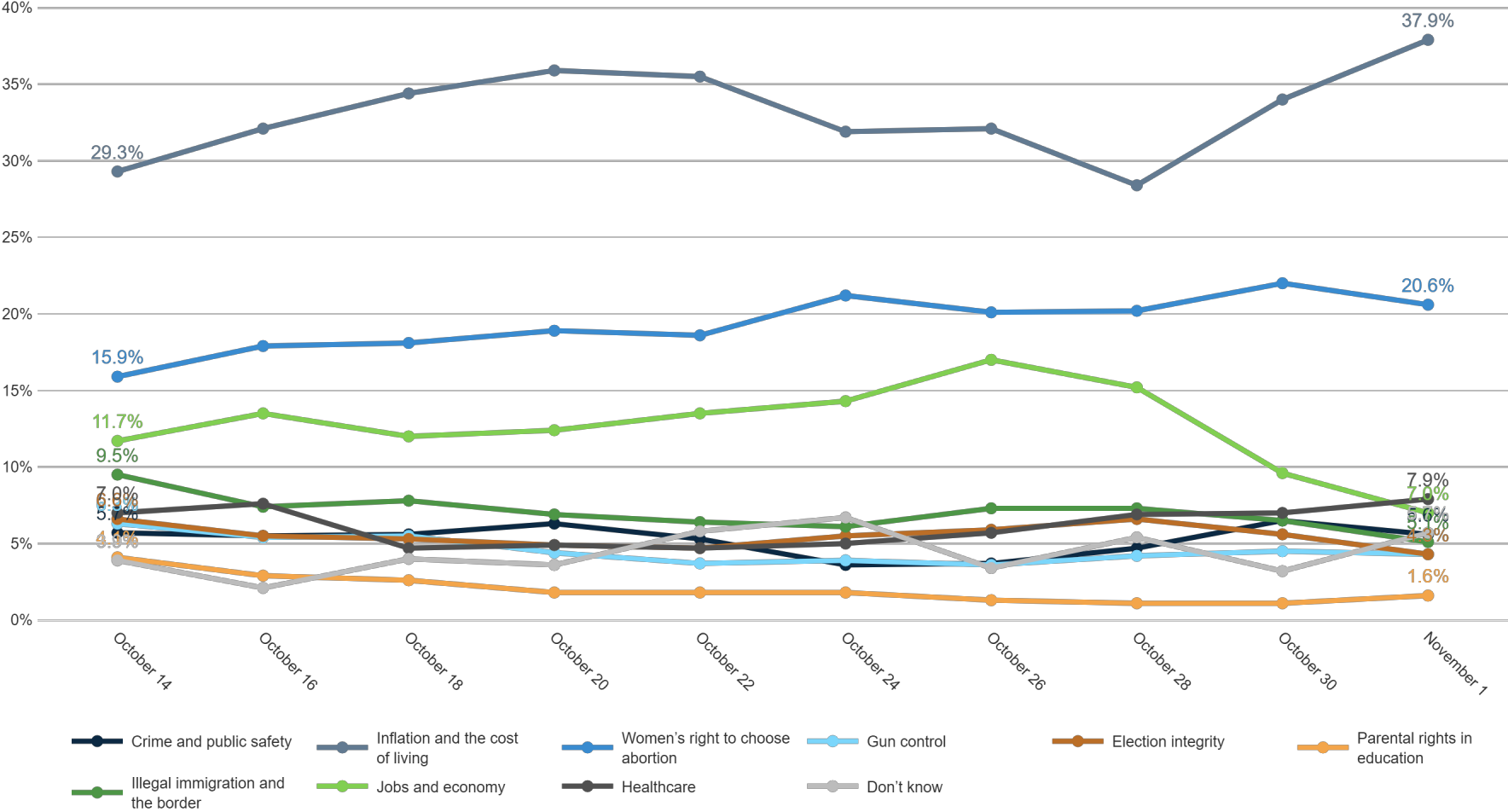
From the following list, which issue is personally most important to you that would decide your vote for government?

Trend: Top Priority



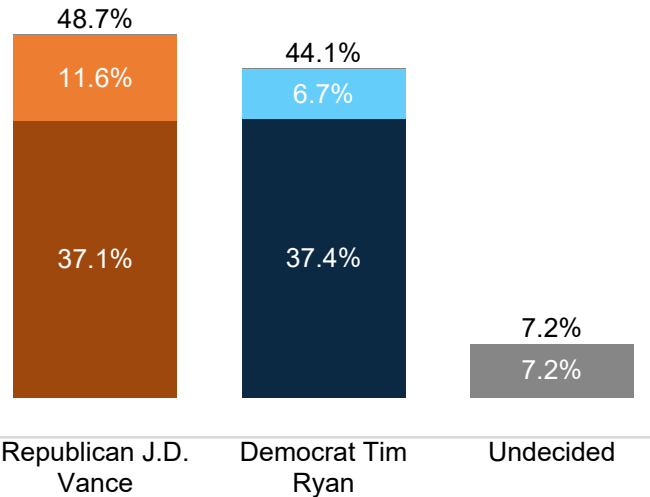
MRP Estimates: Top Priority

Voter Group
Toledo



US Senate Ballot

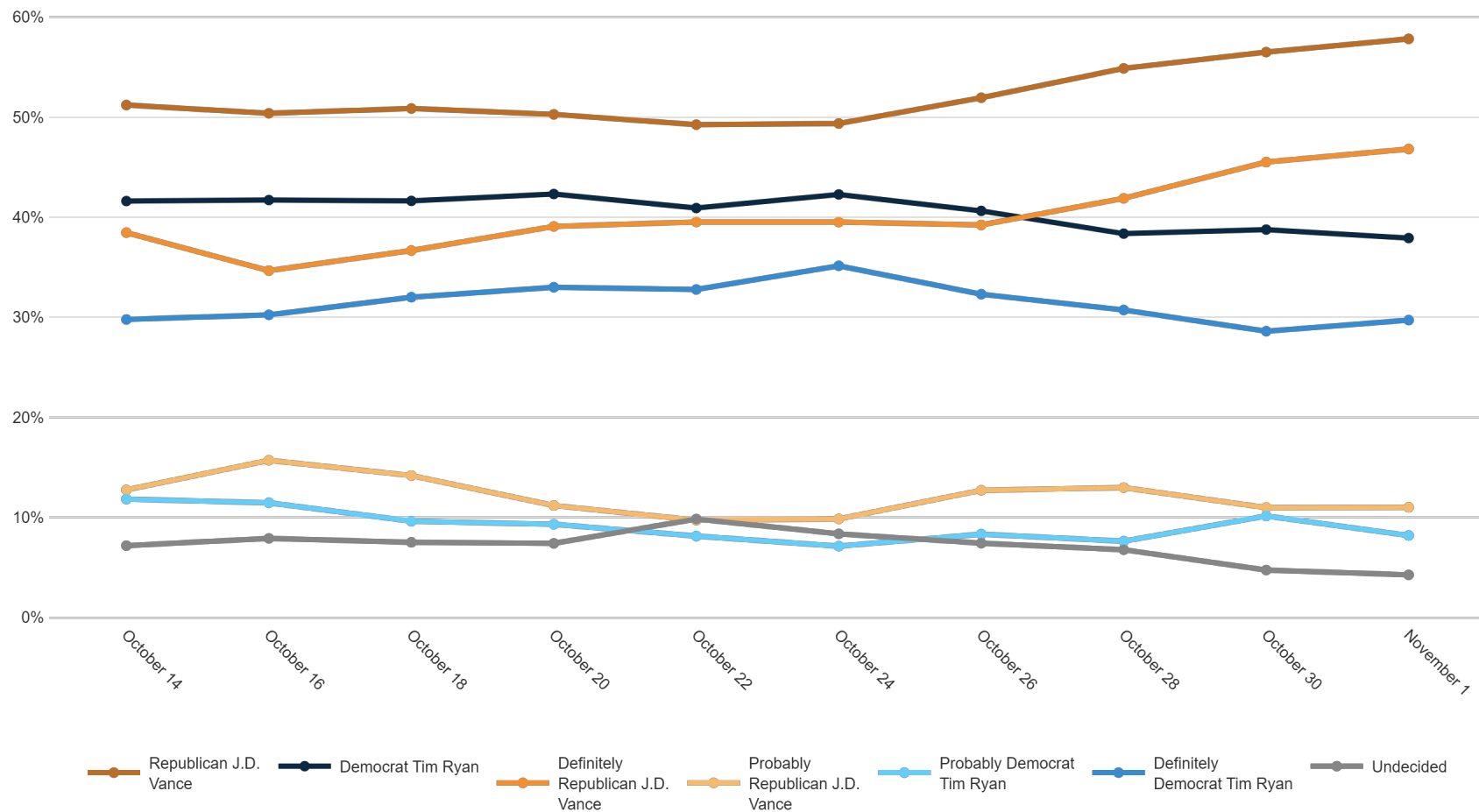
Fielding Date **November 1**



	F 18 - 34	F 35 - 49	F 50 - 64	F 65+	M 18 - 34	M 35 - 49	M 50 - 64	M 65+	Dayton/NW OH	Cincinnati	Columbus/C OH	Cleveland/Akron	Republican	Democrat	Unaffiliated	White	Black	Minorities	F College	F No College	M College	M No College	<\$70k	\$70k+	Generic Undec	Gov Undec	Trump '20	Biden '20	Vote EDay	Vote Mail	Vote In-Person	Already Voted	Always Voted	Usually Voted	Smtms Votes	Rarely Votes
Republican J.D. Vance	39%	41%	45%	55%	40%	44%	56%	59%	53%	50%	50%	45%	85%	5%	41%	52%	26%	33%	37%	52%	43%	58%	44%	53%	14%	28%	86%	5%	54%	29%	41%	40%	52%	38%	59%	34%
Democrat Tim Ryan	51%	51%	45%	41%	52%	44%	36%	41%	39%	44%	44%	47%	9%	92%	45%	42%	60%	67%	55%	41%	50%	36%	46%	44%	23%	22%	8%	90%	37%	64%	48%	58%	43%	51%	30%	40%
Definitely Republican J.D. Vance	27%	29%	31%	42%	33%	34%	42%	49%	38%	38%	39%	35%	67%	3%	28%	39%	16%	33%	29%	37%	36%	45%	32%	42%	5%	21%	67%	3%	41%	19%	26%	35%	41%	25%	43%	19%
Probably Republican J.D. Vance	12%	13%	13%	13%	7%	10%	13%	10%	14%	13%	11%	10%	18%	2%	12%	12%	10%	0%	9%	15%	7%	13%	12%	11%	9%	8%	19%	2%	14%	11%	15%	5%	11%	13%	15%	15%
Probably Democrat Tim Ryan	10%	10%	6%	3%	13%	9%	6%	4%	5%	8%	6%	8%	3%	11%	8%	6%	13%	11%	5%	7%	6%	8%	8%	5%	13%	7%	2%	11%	6%	12%	14%	6%	5%	11%	8%	18%
Definitely Democrat Tim Ryan	41%	41%	40%	38%	39%	35%	31%	37%	33%	36%	38%	40%	6%	81%	37%	36%	47%	55%	50%	34%	44%	28%	38%	39%	10%	15%	5%	79%	31%	53%	35%	53%	39%	40%	22%	22%
Undecided	10%	8%	10%	4%	8%	12%	8%	0%	9%	6%	6%	8%	5%	3%	15%	6%	15%	0%	7%	8%	8%	6%	10%	3%	64%	50%	6%	5%	9%	7%	11%	2%	5%	10%	12%	26%

If the general election for U.S. Senate was held today, and you had to make a choice, who would you vote for?

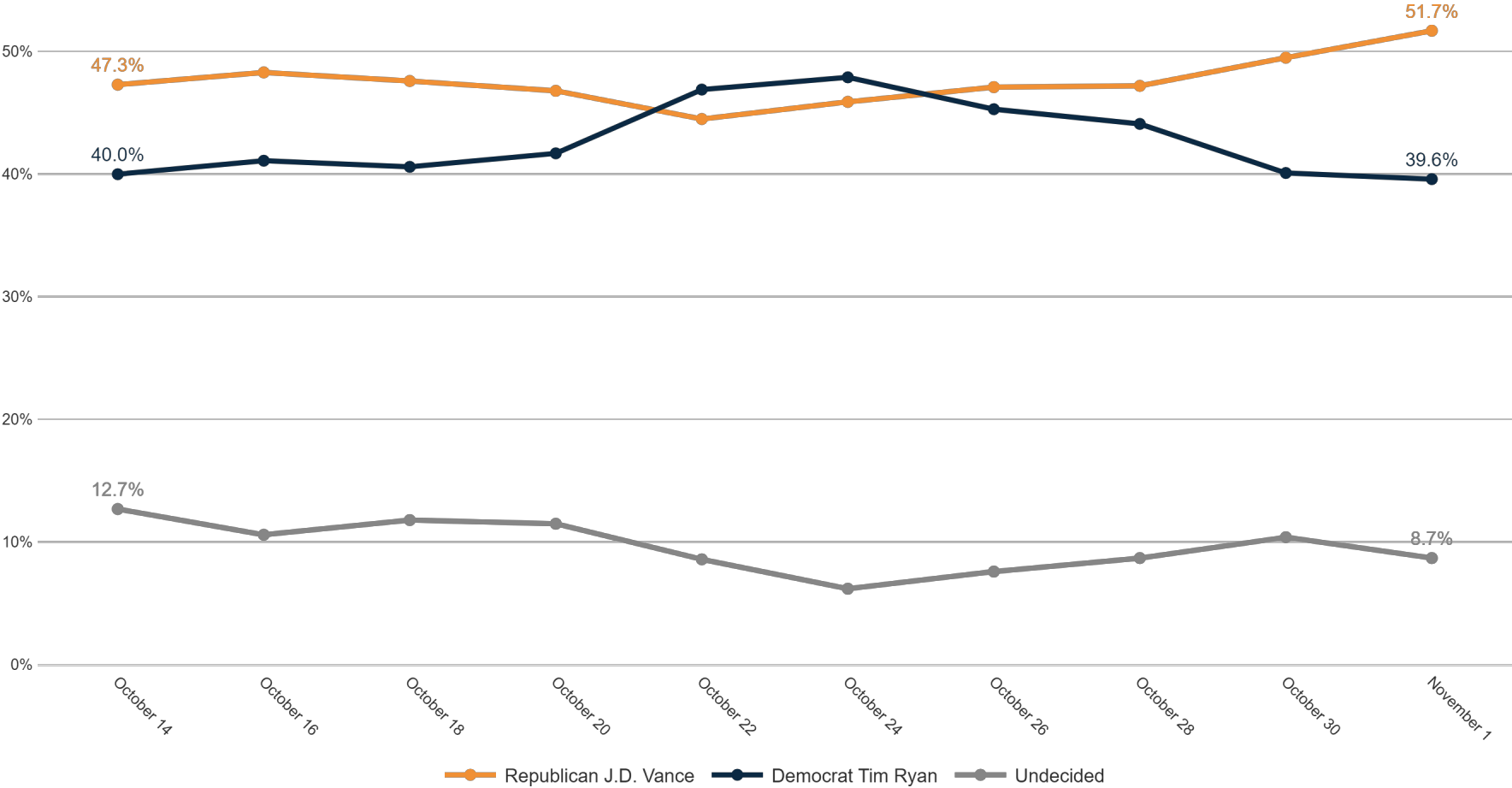
Trend: US Senate Ballot



MRP Estimates: US Senate Ballot

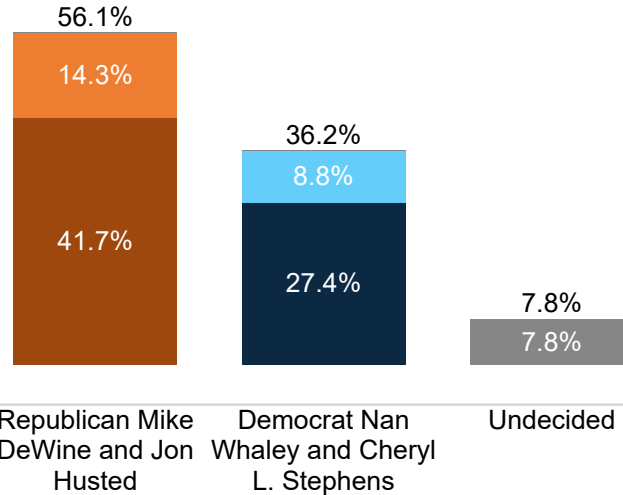
Voter Group

Toledo



Governor Ballot

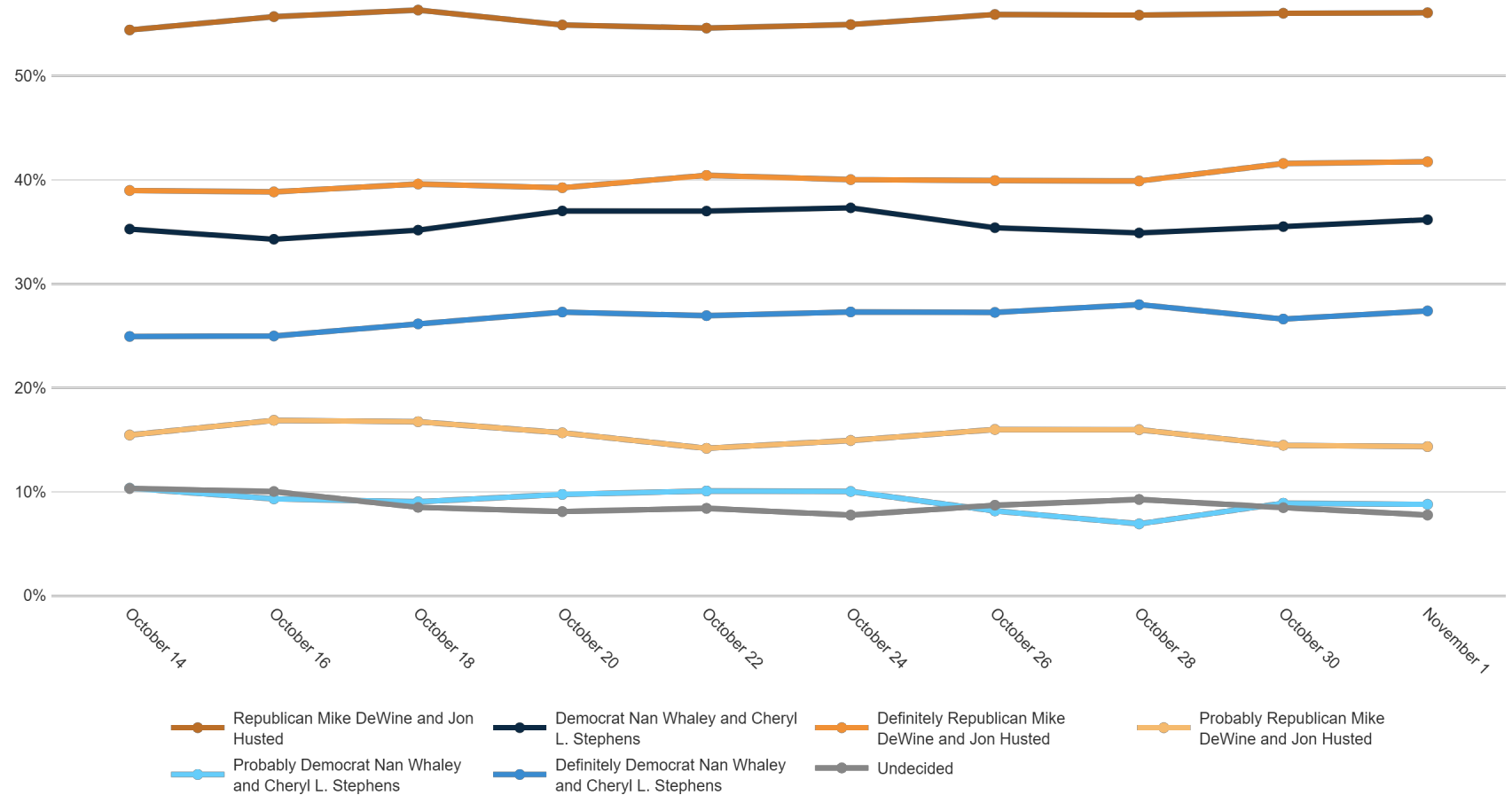
Fielding Date **November 1**



	F 18 - 34	F 35 - 49	F 50 - 64	F 65+	M 18 - 34	M 35 - 49	M 50 - 64	M 65+	Dayton/ NW OH	Cincinnati	Columbus/C OH	Cleveland/Akron	Republican	Democrat	Unaffiliated	White	Black	Minorities	F College	F No College	M College	M No College	<\$70k	\$70k+	Generic Undec	US Sen Undec	Trump '20	Biden '20	Vote EDay	Vote Mail	Vote In-Person	Already Voted	Usually Votes	Smtms Votes	Rarely Votes	
Republican Mike DeWine and Jon Husted	36%	45%	50%	67%	48%	56%	65%	67%	58%	58%	57%	54%	90%	15%	50%	60%	31%	45%	42%	58%	52%	67%	55%	57%	34%	34%	89%	19%	60%	44%	53%	49%	57%	52%	70%	43%
Democrat Nan Whaley and Cheryl L. Stephens	55%	46%	39%	31%	38%	33%	27%	31%	33%	37%	35%	38%	6%	79%	35%	34%	53%	53%	52%	34%	39%	26%	36%	37%	15%	13%	6%	74%	30%	50%	37%	49%	37%	38%	20%	27%
Definitely Republican Mike DeWine and Jon Husted	24%	33%	34%	53%	31%	35%	53%	54%	42%	45%	42%	40%	72%	8%	31%	45%	22%	27%	33%	42%	41%	49%	40%	44%	17%	22%	71%	9%	44%	30%	27%	41%	45%	33%	53%	24%
Probably Republican Mike DeWine and Jon Husted	11%	12%	16%	14%	17%	20%	12%	13%	16%	13%	15%	14%	18%	8%	18%	15%	9%	18%	10%	16%	10%	18%	15%	14%	17%	11%	18%	10%	16%	14%	26%	8%	13%	19%	17%	19%
Probably Democrat Nan Whaley and Cheryl L. Stephens	21%	11%	9%	3%	11%	8%	8%	5%	13%	6%	8%	8%	3%	14%	12%	8%	11%	14%	11%	9%	9%	6%	9%	9%	13%	10%	4%	14%	8%	14%	13%	7%	7%	12%	13%	14%
Definitely Democrat Nan Whaley and Cheryl L. Stephens	34%	34%	30%	28%	27%	25%	19%	26%	21%	31%	27%	30%	3%	65%	22%	26%	42%	39%	41%	25%	30%	19%	28%	28%	2%	3%	2%	61%	22%	36%	24%	42%	30%	26%	8%	12%
Undecided	9%	9%	11%	2%	14%	12%	9%	2%	9%	5%	8%	8%	4%	5%	16%	6%	16%	2%	5%	8%	10%	7%	9%	6%	51%	53%	5%	7%	10%	7%	10%	2%	5%	11%	9%	30%

If the general election for Governor was held today, and you had to make a choice, who would you vote for?

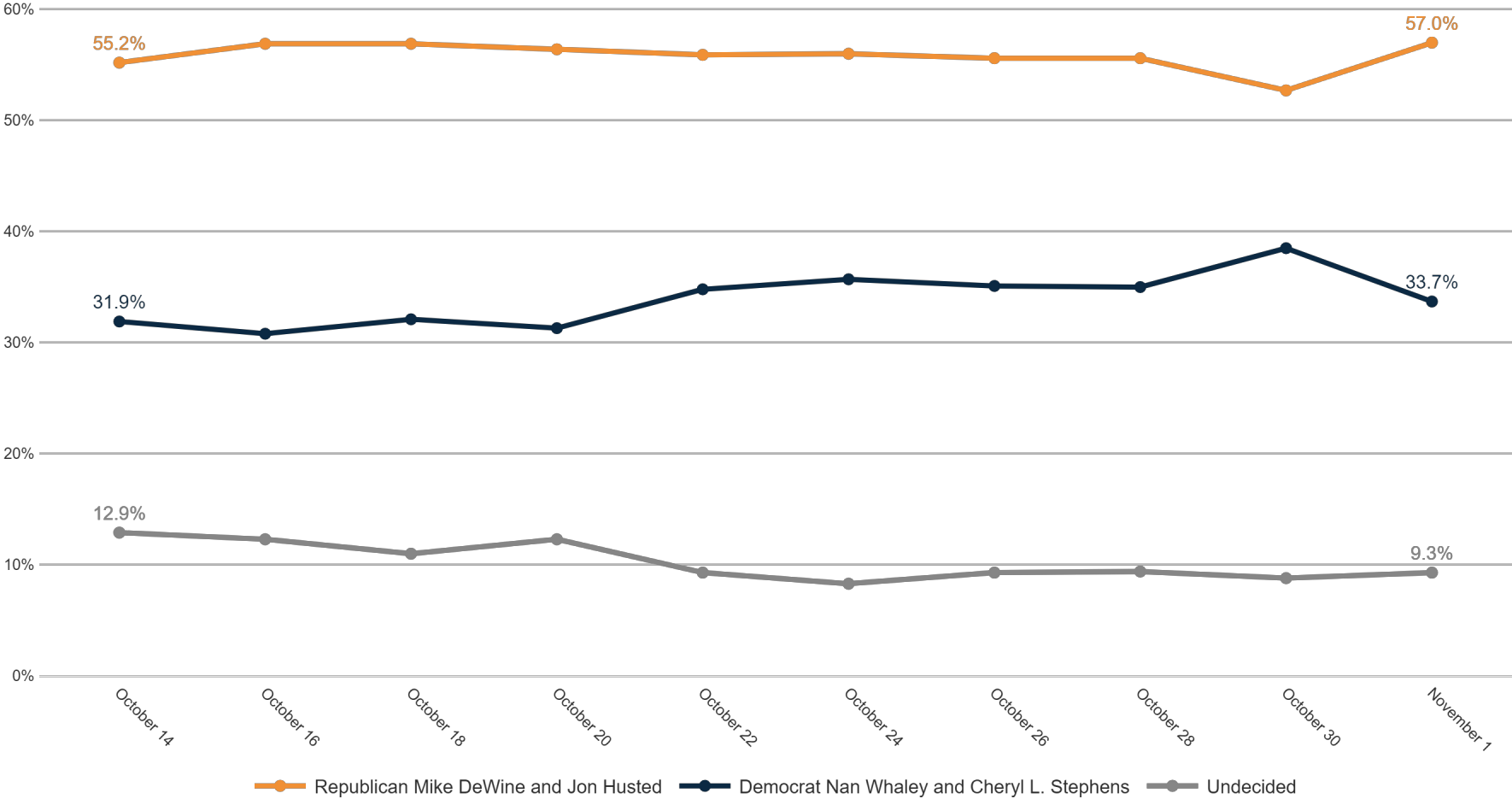
Trend: Governor Ballot



MRP Estimates: Gov Ballot

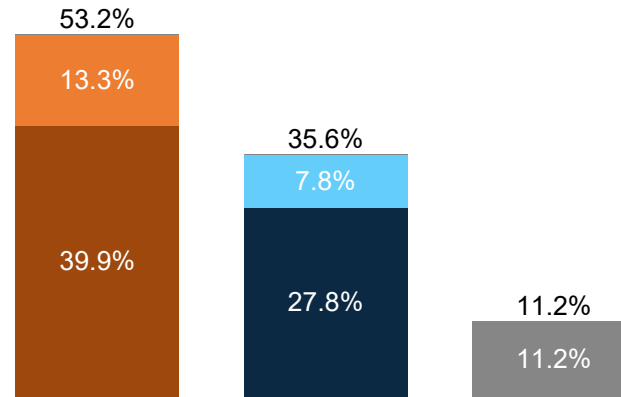
Voter Group

Toledo



Attorney General Ballot

Fielding Date **November 1**

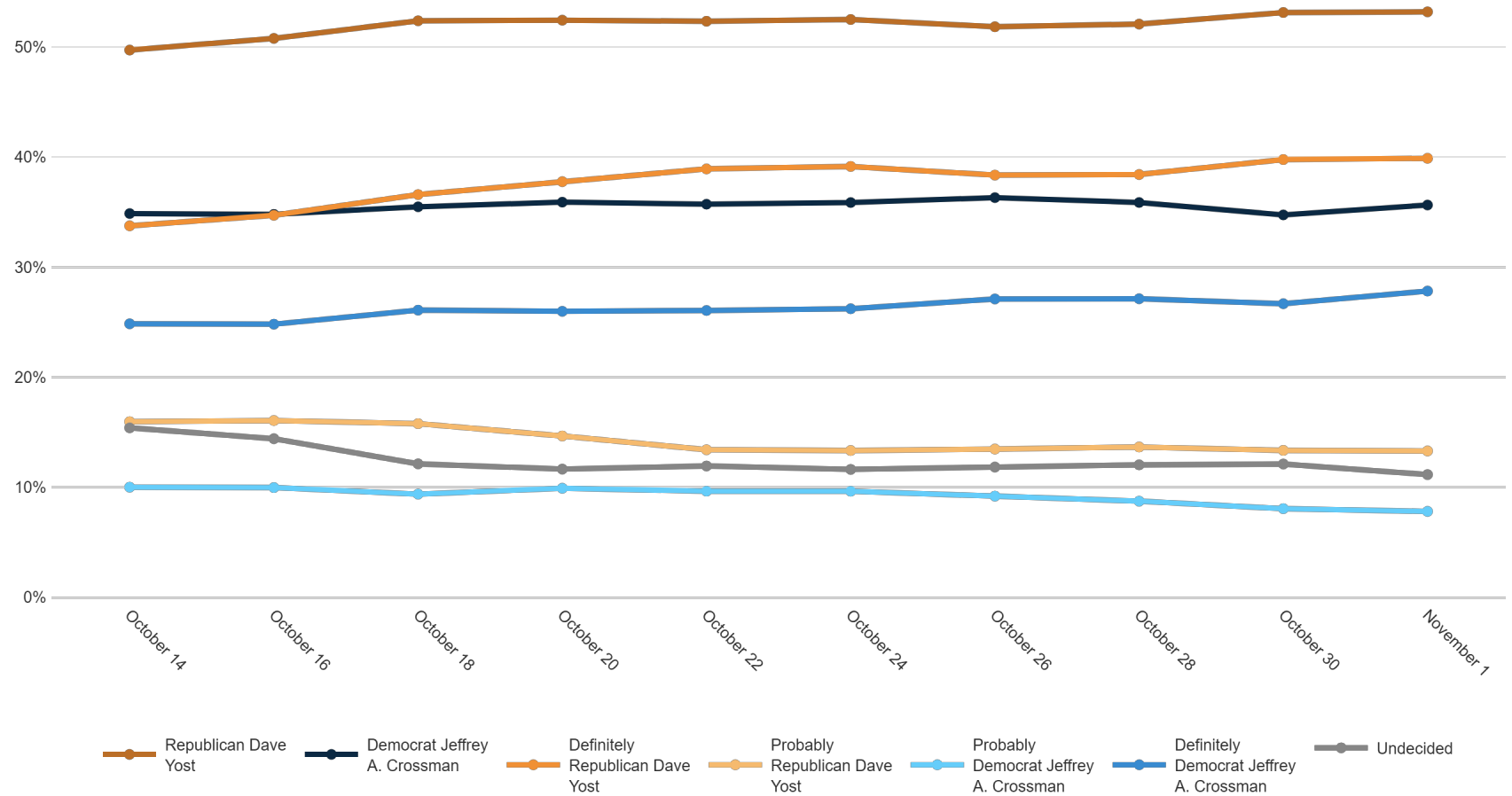


Republican Dave Yost Democrat Jeffrey A. Crossman Undecided

	F 18 - 34	F 35 - 49	F 50 - 64	F 65+	M 18 - 34	M 35 - 49	M 50 - 64	M 65+	Dayton/ NW OH	Cincinnati	Columbus/C OH	Cleveland/Akron	Republican	Democrat	Unaffiliated	White	Black	Minorities	F College	F No College	M College	M No College	<\$70k	\$70k+	Generic Undec	US Sen Undec	Gov Undec	Trump '20	Biden '20	Vote EDay	Vote Mail	Vote In-Person	Always Voted	Usually Voted	Smtms Votes	Rarely Votes	
Republican Dave Yost	35%	44%	45%	63%	44%	52%	62%	66%	53%	56%	56%	50%	90%	7%	48%	57%	27%	51%	43%	53%	51%	63%	49%	57%	25%	20%	23%	88%	12%	58%	39%	45%	45%	56%	45%	58%	38%
Democrat Jeffrey A. Crossman	47%	40%	40%	33%	39%	32%	28%	33%	33%	36%	36%	37%	4%	85%	28%	33%	58%	43%	47%	34%	39%	26%	36%	36%	4%	5%	14%	4%	78%	30%	44%	37%	51%	37%	36%	24%	24%
Definitely Republican Dave Yost	23%	32%	32%	50%	28%	39%	47%	52%	38%	41%	42%	39%	72%	4%	31%	43%	15%	35%	34%	38%	38%	48%	35%	44%	11%	11%	15%	70%	5%	44%	20%	27%	37%	45%	27%	43%	18%
Probably Republican Dave Yost	12%	13%	12%	13%	16%	13%	15%	13%	14%	14%	14%	12%	19%	4%	16%	14%	11%	16%	9%	14%	13%	15%	14%	13%	14%	8%	8%	18%	7%	14%	18%	18%	8%	12%	17%	15%	20%
Probably Democrat Jeffrey A. Crossman	16%	12%	5%	5%	9%	5%	8%	7%	10%	7%	7%	7%	2%	15%	10%	7%	14%	14%	7%	9%	7%	8%	9%	6%	3%	2%	9%	2%	15%	8%	11%	7%	7%	9%	8%	12%	
Definitely Democrat Jeffrey A. Crossman	32%	28%	34%	28%	30%	27%	19%	25%	23%	28%	29%	30%	2%	71%	18%	26%	44%	29%	40%	26%	32%	19%	26%	30%	1%	3%	5%	1%	63%	22%	34%	30%	43%	30%	27%	16%	12%
Undecided	18%	15%	16%	4%	17%	16%	10%	2%	14%	9%	8%	13%	5%	7%	25%	10%	15%	6%	10%	13%	10%	11%	15%	6%	71%	75%	63%	8%	10%	12%	17%	18%	4%	7%	19%	18%	38%

If the general election for Attorney General was held today, and you had to make a choice, who would you vote for?

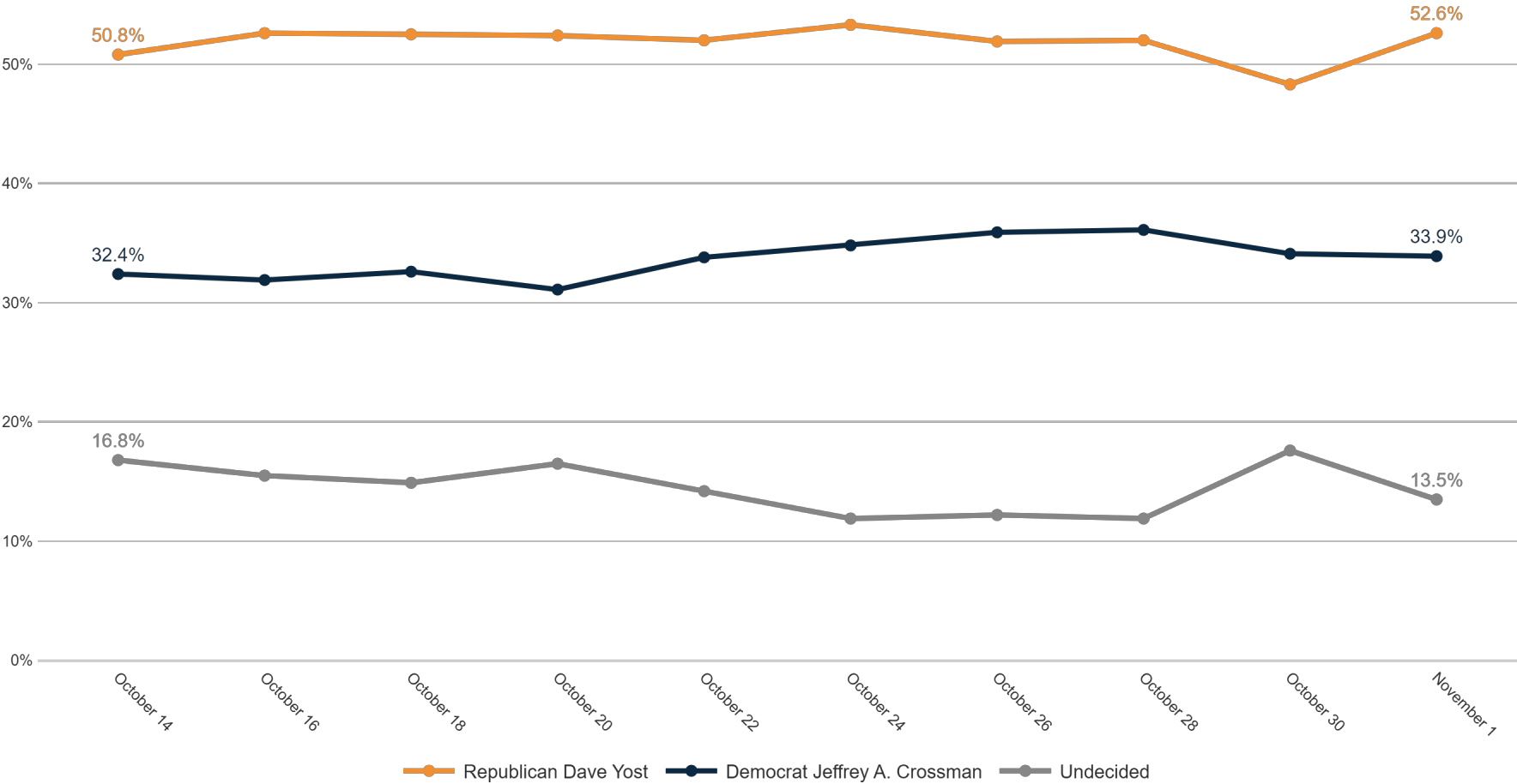
Trend: Attorney General Ballot



MRP Estimates: AG Ballot

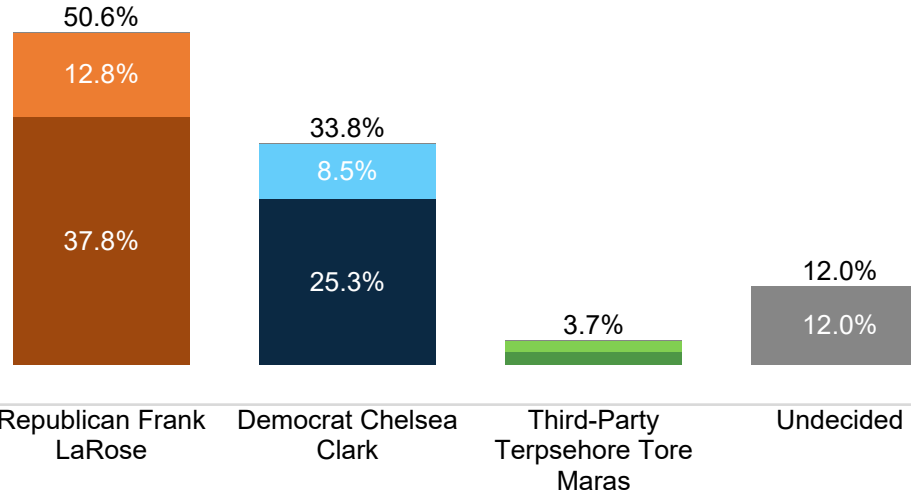
Voter Group

Toledo



Secretary of State Ballot

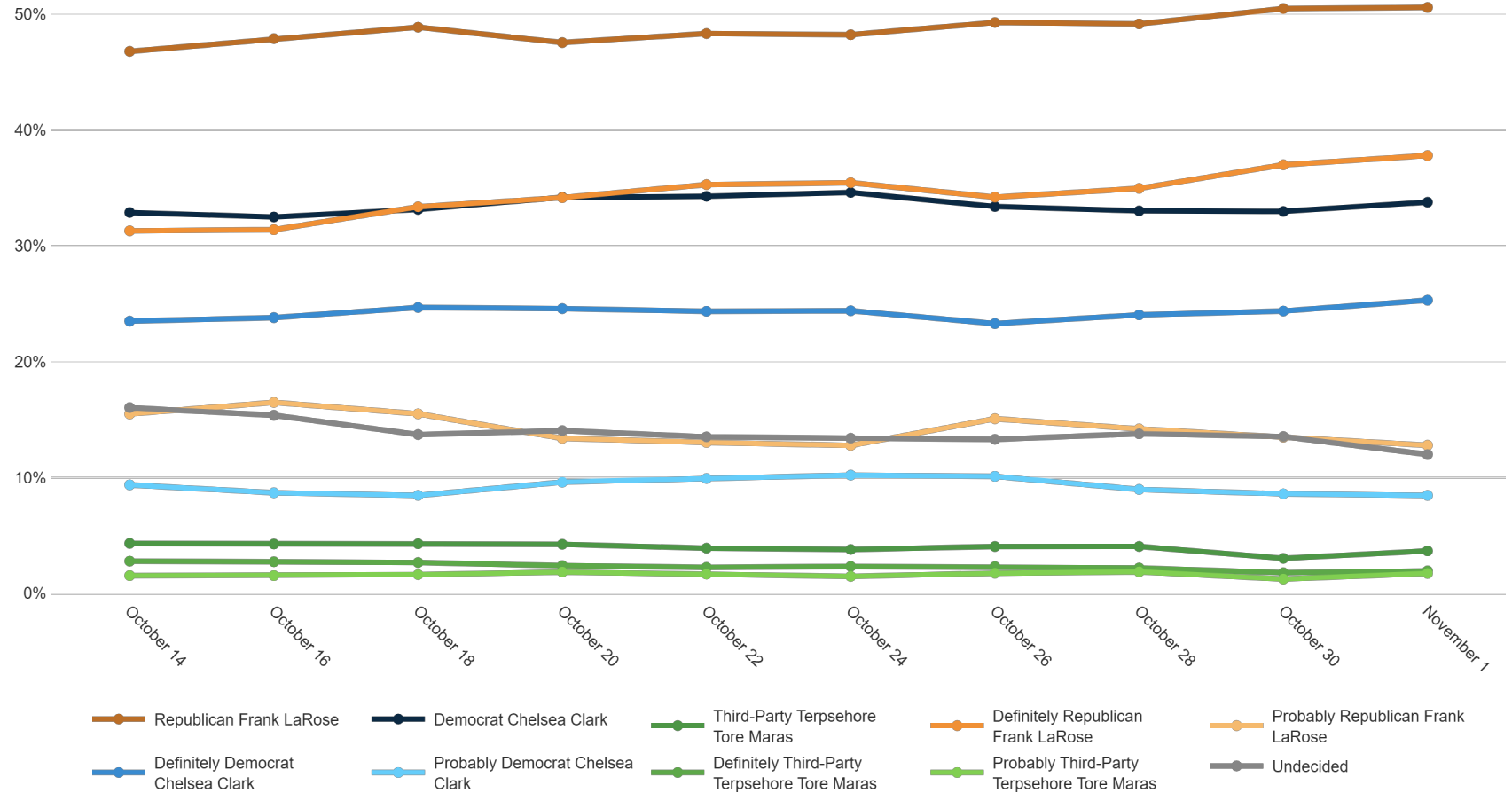
Fielding Date **November 1**



	F 18 - 34				F 35 - 49				F 50 - 64				F 65+				M 18 - 34				M 35 - 49				M 50 - 64				M 65+				Dayton/ NW OH		Cincinnati		Columbus/C OH		Cleveland/Akron		Republican		Democrat		Unaffiliated		White		Black		Minorities		F College		F No College		M College		M No College		<\$70k		\$70k+		Generic Undec		US Sen Undec		Gov Undec		Trump '20		Biden '20		Vote EDay		Vote Mail		Vote In-Person		Always Voted		Usually Votes		Smtms Votes		Rarely Votes	
Republican Frank LaRose	33%	39%	44%	62%	37%	50%	59%	64%	51%	51%	54%	48%	86%	8%	44%	55%	26%	31%	41%	51%	48%	60%	48%	53%	22%	22%	21%	85%	11%	54%	37%	42%	47%	54%	44%	55%	29%																																																			
Democrat Chelsea Clark	37%	35%	40%	32%	41%	31%	27%	31%	30%	35%	33%	36%	4%	81%	24%	32%	53%	41%	44%	31%	39%	26%	34%	35%	6%	3%	10%	3%	75%	28%	44%	39%	48%	35%	35%	19%	20%																																																			
Third-Party Terpsehore Tore Maras	8%	7%	1%	2%	8%	3%	2%	3%	4%	4%	4%	3%	3%	3%	8%	3%	4%	24%	4%	4%	4%	3%	3%	4%	6%	4%	5%	3%	3%	5%	0%	2%	2%	4%	3%	9%	1%																																																			
Definitely Republican Frank LaRose	22%	28%	31%	50%	26%	33%	46%	49%	37%	40%	40%	36%	69%	4%	27%	41%	17%	26%	32%	37%	35%	45%	35%	41%	12%	13%	8%	68%	5%	40%	23%	30%	39%	42%	28%	41%	13%																																																			
Probably Republican Frank LaRose	11%	11%	13%	11%	11%	17%	13%	15%	14%	11%	14%	12%	18%	3%	17%	14%	9%	5%	8%	14%	13%	15%	13%	12%	10%	9%	13%	17%	7%	14%	14%	12%	8%	12%	16%	13%	16%																																																			
Definitely Democrat Chelsea Clark	27%	26%	31%	27%	27%	25%	17%	23%	23%	28%	24%	26%	2%	63%	17%	24%	41%	18%	34%	24%	30%	17%	24%	27%	2%	1%	2%	1%	57%	21%	28%	29%	39%	27%	24%	14%	11%																																																			
Probably Democrat Chelsea Clark	10%	9%	9%	5%	15%	6%	10%	8%	7%	7%	8%	10%	2%	18%	8%	8%	12%	23%	10%	7%	10%	9%	10%	7%	4%	3%	8%	2%	18%	7%	17%	10%	9%	8%	11%	5%	9%																																																			
Definitely Third-Party Terpsehore Tore Maras	5%	2%	1%	1%	5%	2%	1%	1%	2%	3%	3%	1%	1%	1%	5%	2%	1%	9%	2%	2%	3%	1%	2%	2%	3%	2%	4%	2%	2%	2%	0%	2%	1%	2%	1%	6%	1%																																																			
Probably Third-Party Terpsehore Tore Maras	3%	5%	0%	1%	3%	1%	1%	2%	2%	1%	1%	2%	1%	2%	3%	1%	3%	14%	1%	2%	1%	2%	1%	2%	3%	2%	1%	1%	1%	2%	0%	0%	0%	2%	2%	3%	0%																																																			
Undecided	22%	19%	15%	5%	14%	16%	12%	2%	15%	10%	9%	13%	7%	8%	24%	11%	17%	4%	11%	15%	9%	11%	16%	8%	66%	71%	64%	9%	11%	13%	19%	17%	4%	7%	18%	17%	50%																																																			

If the general election for Secretary of State was held today, and you had to make a choice, who would you vote for?

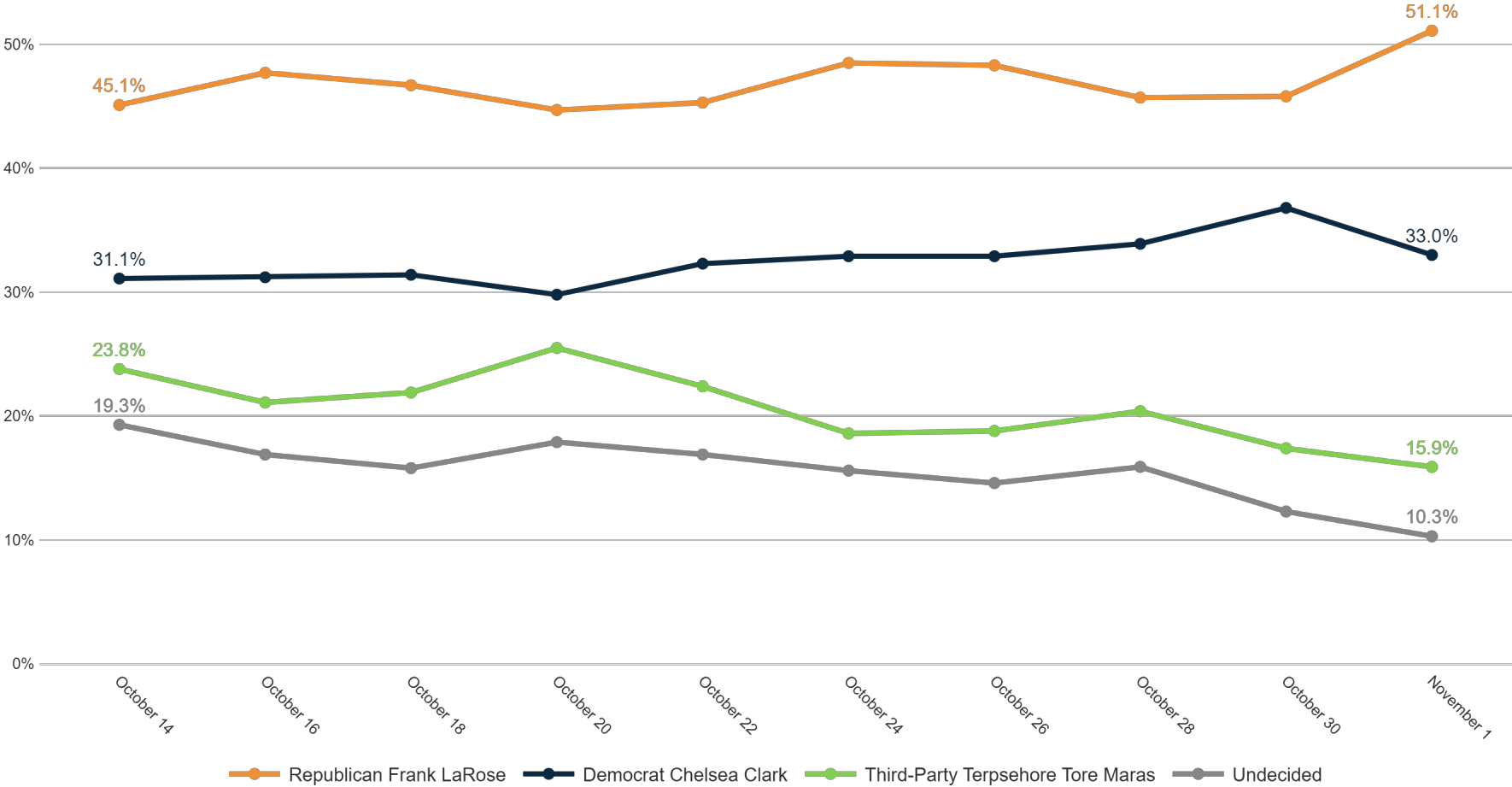
Trend: Secretary of State Ballot



MRP Estimates: SoS Ballot

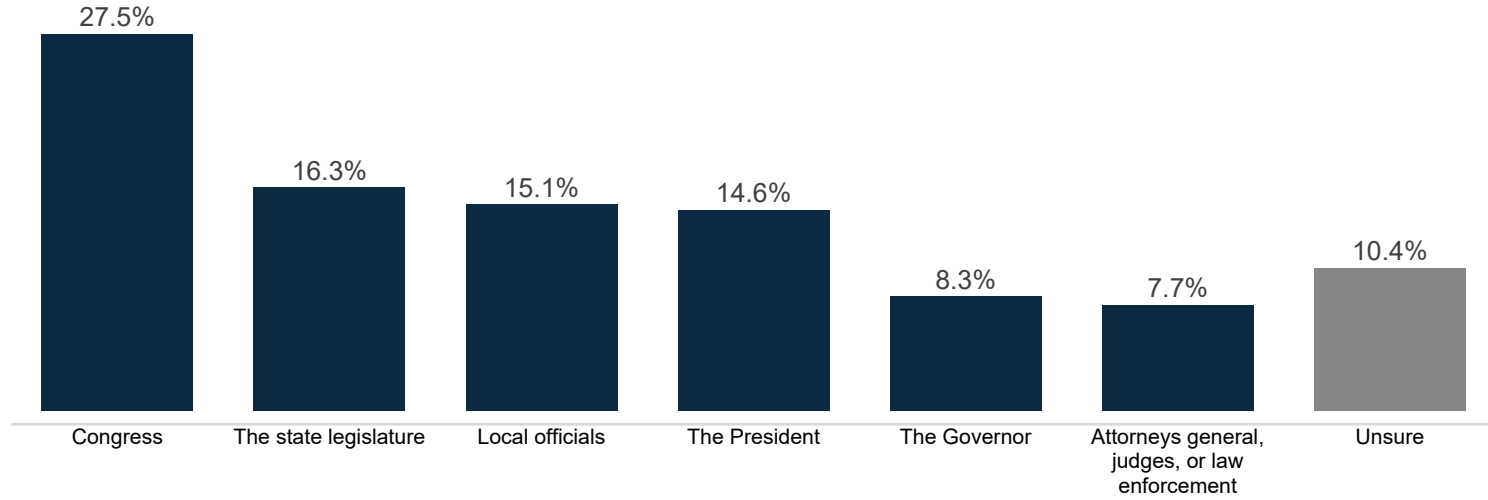
Voter Group

Toledo



Level of Government

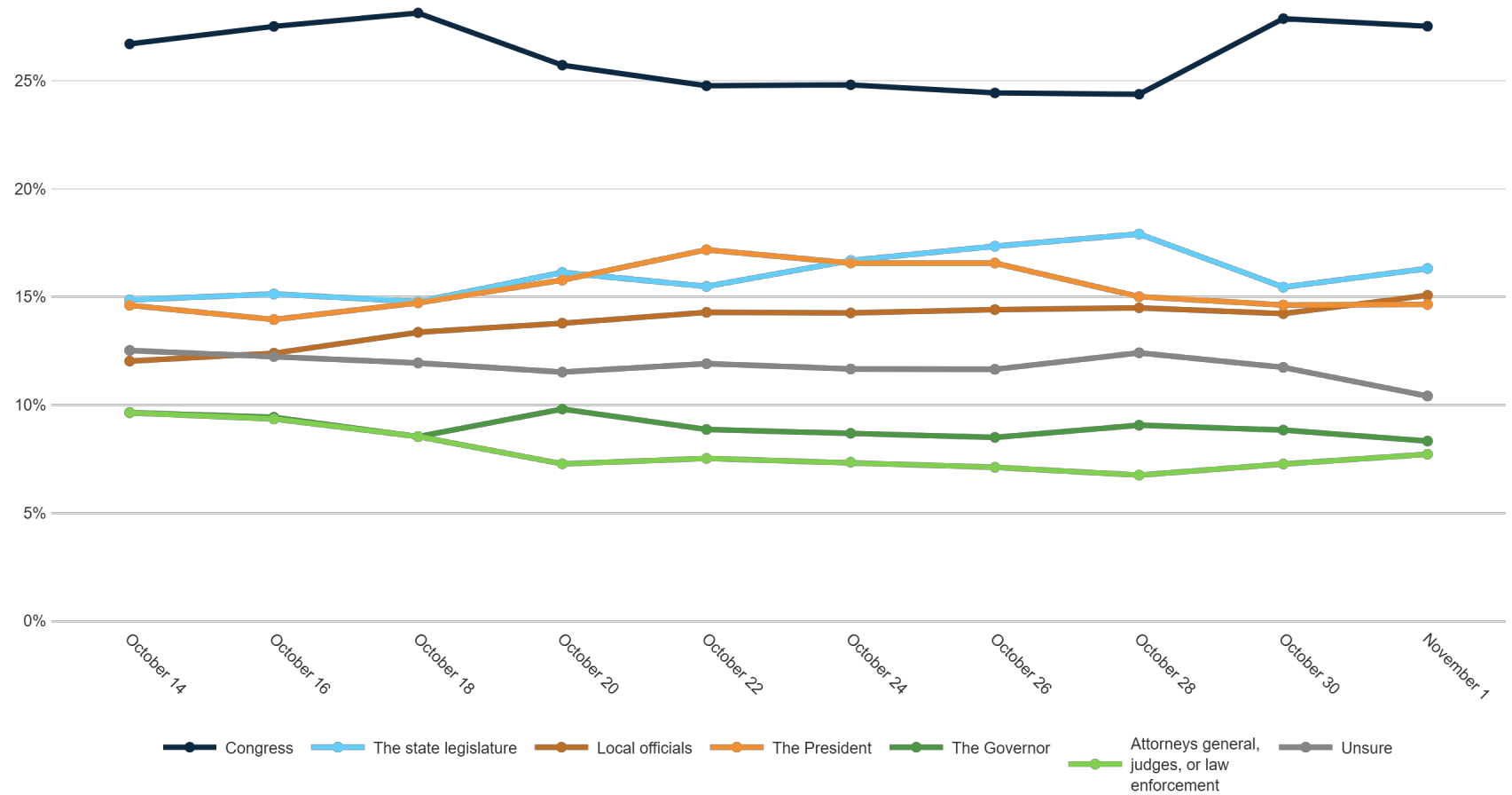
Fielding Date **November 1**



		F 18 - 34	F 35 - 49	F 50 - 64	F 65+	M 18 - 34	M 35 - 49	M 50 - 64	M 65+	Dayton/ NW OH	Cincinnati	Columbus/C OH	Cleveland/Akron	Republican	Democrat	Unaffiliated	White	Black	Minorities	F College	F No College	M College	M No College	<\$70k	\$70k+	Generic Undec	US Sen Undec	Gov Undec	Trump '20	Biden '20	Vote EDay	Vote Mail	Vote In-Person	Always Voted	Usually Voted	Smtms Votes	Rarely Votes	
Attorneys general, judges, or law enforcement	Congress	25%	29%	28%	23%	18%	29%	32%	34%	28%	27%	26%	28%	29%	27%	27%	28%	22%	30%	25%	26%	28%	31%	27%	28%	14%	17%	19%	29%	26%	27%	24%	21%	31%	28%	29%	32%	14%
	The state legislature	17%	20%	18%	14%	19%	20%	16%	10%	13%	22%	17%	16%	12%	21%	18%	17%	13%	22%	22%	14%	18%	14%	14%	19%	14%	15%	14%	12%	23%	16%	16%	27%	16%	17%	17%	8%	15%
	Local officials	19%	13%	12%	14%	20%	16%	18%	12%	17%	16%	13%	15%	14%	14%	21%	15%	19%	13%	16%	13%	17%	15%	14%	16%	29%	21%	21%	14%	15%	15%	18%	11%	15%	17%	13%	5%	9%
	The President	14%	10%	13%	18%	13%	12%	14%	19%	13%	14%	14%	16%	21%	9%	10%	14%	20%	18%	10%	17%	13%	16%	15%	14%	7%	14%	13%	21%	8%	16%	8%	8%	15%	15%	12%	30%	15%
	The Governor	7%	10%	8%	5%	15%	10%	6%	9%	9%	6%	12%	6%	8%	10%	7%	8%	10%	14%	10%	6%	9%	9%	8%	9%	11%	8%	5%	8%	9%	9%	7%	16%	5%	7%	10%	10%	16%
	Unsure	9%	8%	15%	15%	5%	9%	6%	11%	11%	6%	9%	12%	10%	10%	11%	11%	10%	2%	10%	14%	6%	10%	13%	7%	20%	19%	20%	9%	11%	10%	16%	14%	8%	9%	13%	7%	23%

What level of government do you believe has the most impact on your day-to-day life?

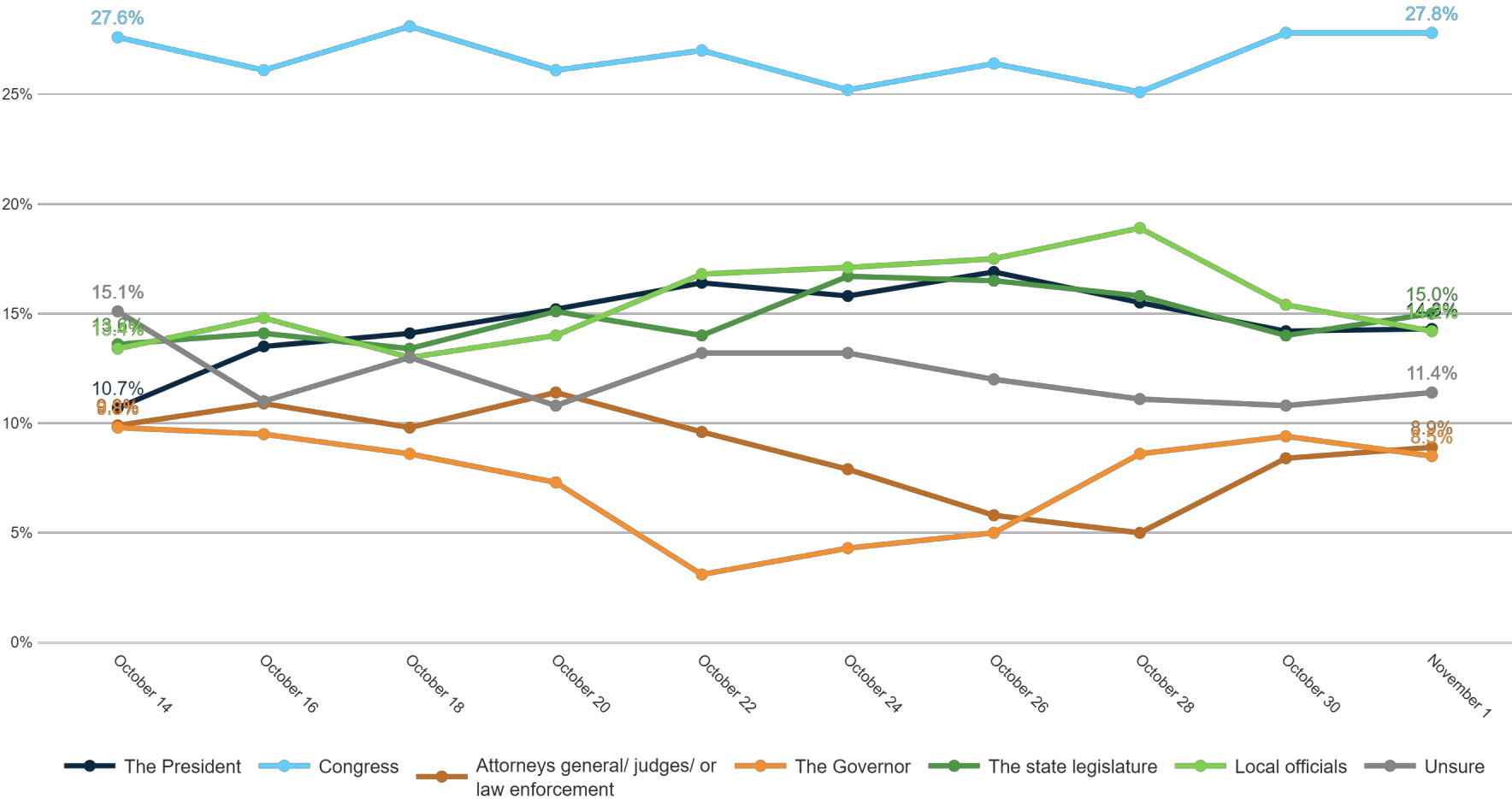
Trend: Level of Government



MRP Estimates: Level of Government

Voter Group

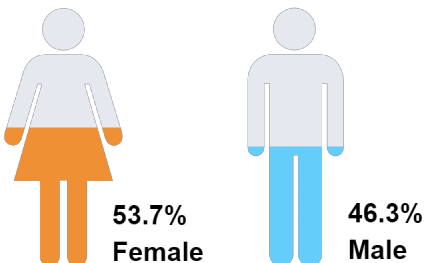
Toledo



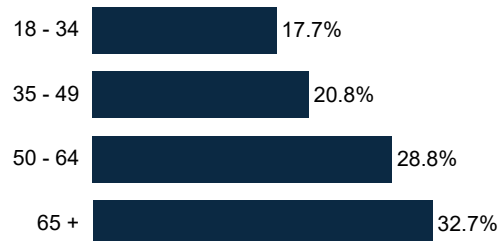
Demographics

Fielding Date **November 1**

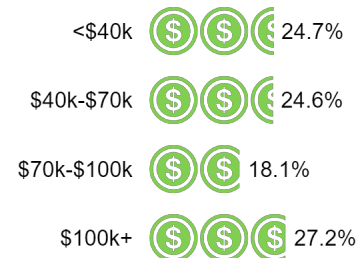
Sex



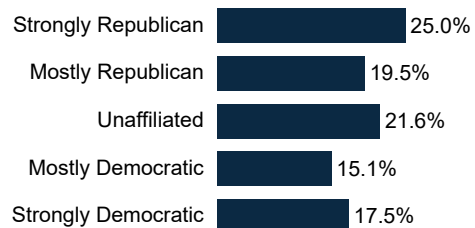
Age Range



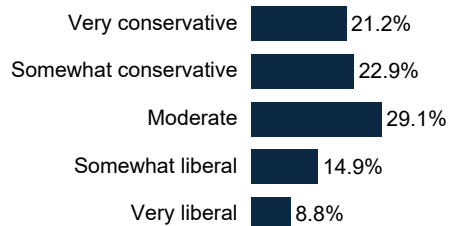
Household Income



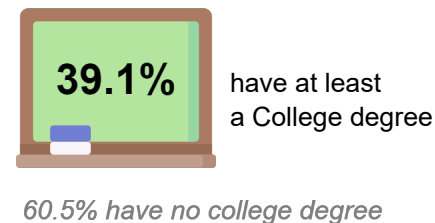
Partisanship



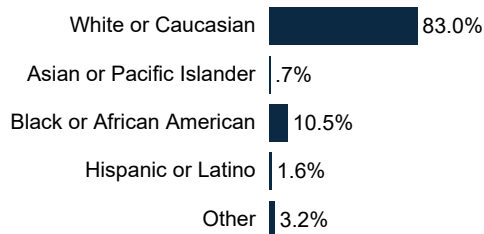
Ideology



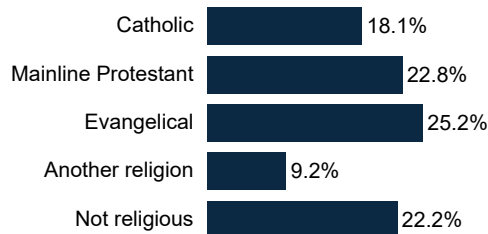
Education



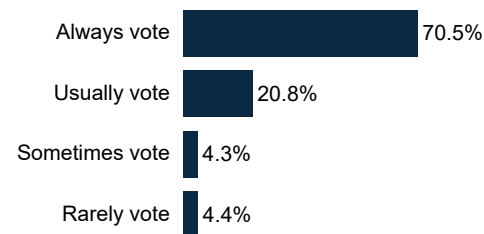
Race/ Ethnicity



Religion



Voter History



Total sample size: 1520