

CYGNAL

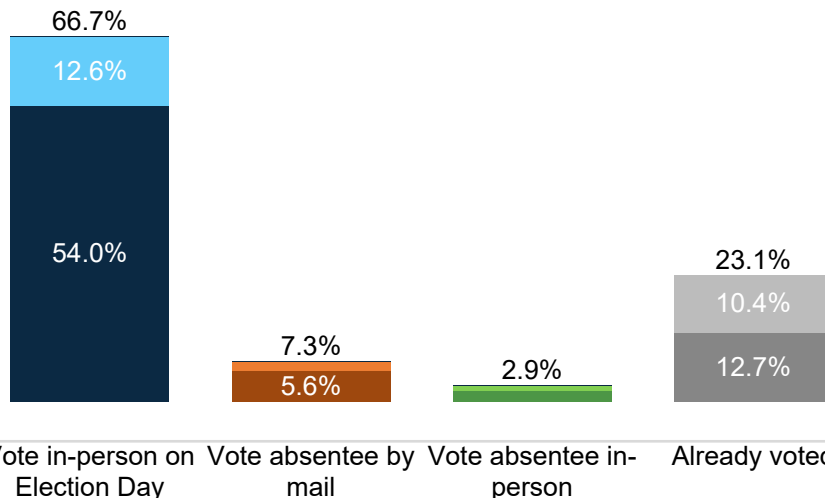
Survey of Likely General Election Voters
Ohio Statewide

November 1 – 3, 2022

n=1,498 | $\pm 2.53\%$

Vote Method

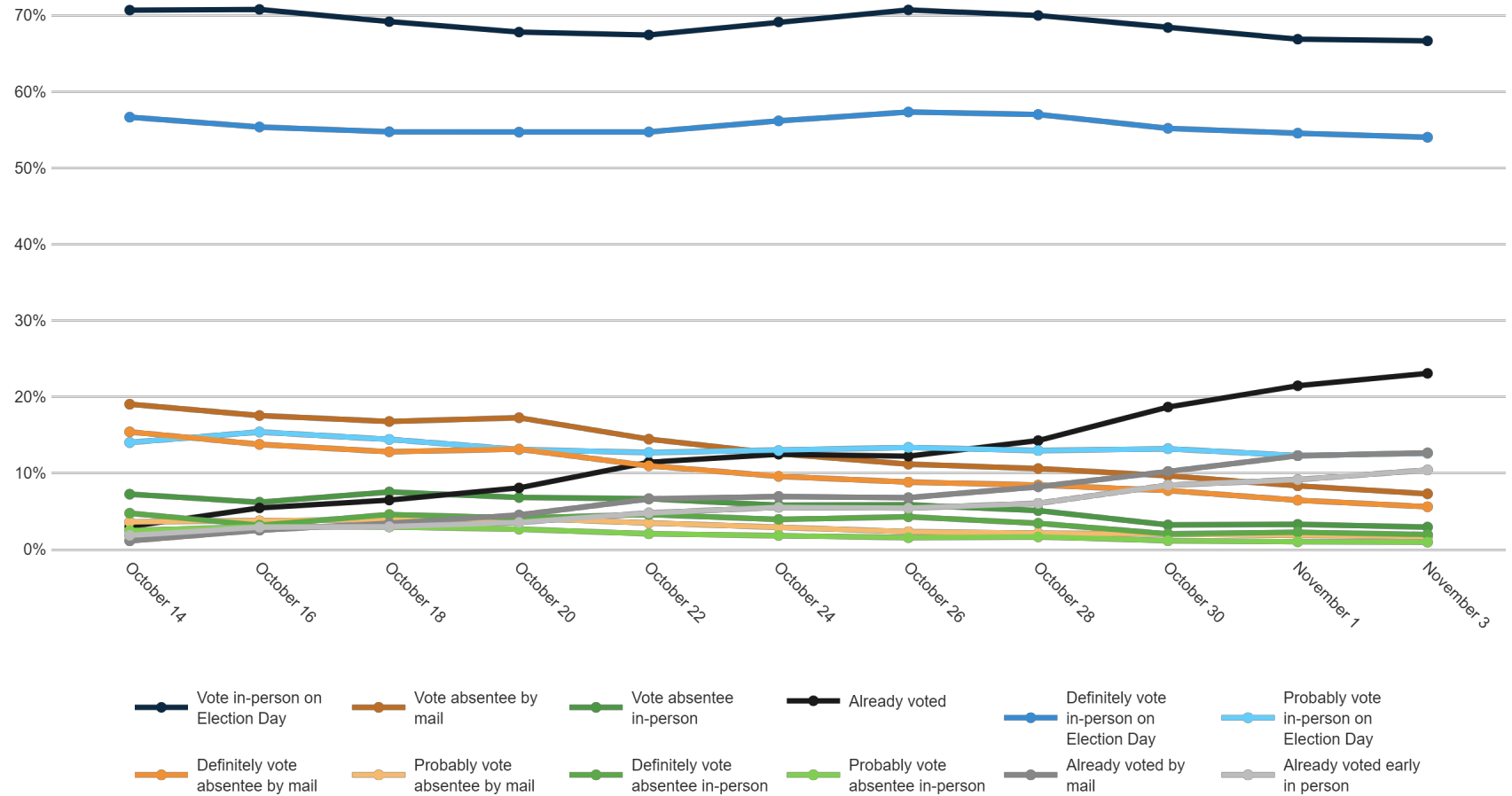
Fielding Date **November 3**



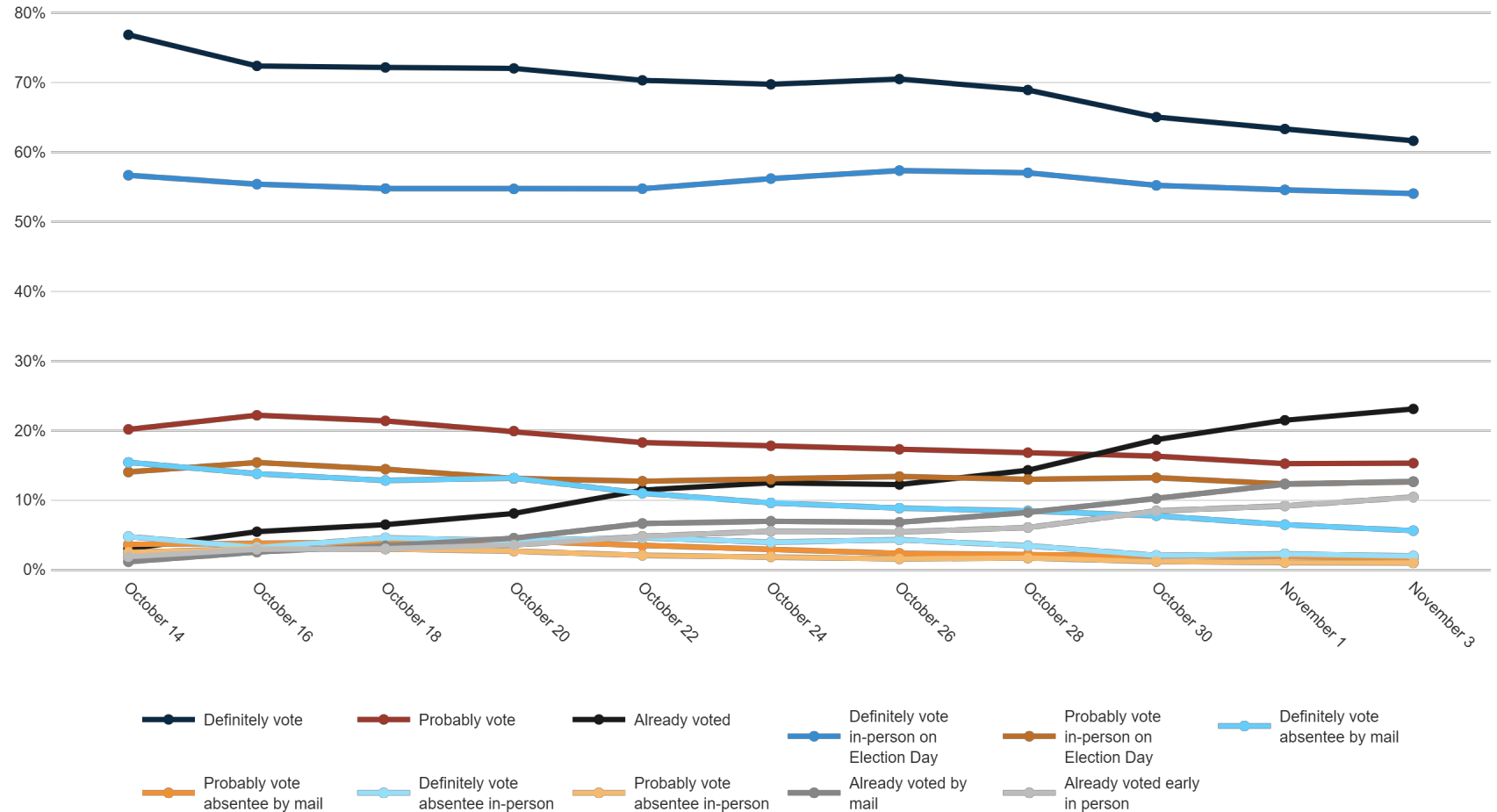
	F 18 - 34	F 35 - 49	F 50 - 64	F 65+	M 18 - 34	M 35 - 49	M 50 - 64	M 65+	Dayton/ NW OH	Cincinnati	Columbus/C OH	Cleveland/Akron	Republican	Democrat	Unaffiliated	White	Black	Minorities	F College	F No College	M College	M No College	<\$70k	\$70k+	Generic Undec	US Sen Undec	Gov Undec	Trump '20	Biden '20	Always Votes	Usually Votes	Smtms Votes	Rarely Votes
Vote in-person on Election Day	77%	72%	63%	52%	72%	77%	75%	60%	70%	66%	66%	66%	72%	58%	68%	67%	60%	83%	67%	61%	70%	71%	63%	72%	71%	79%	79%	74%	56%	66%	64%	75%	76%
Vote absentee by mail	4%	6%	9%	12%	10%	2%	7%	6%	4%	10%	8%	8%	7%	9%	6%	7%	9%	11%	7%	10%	4%	7%	11%	4%	9%	8%	2%	5%	9%	6%	11%	11%	2%
Vote absentee in-person	2%	5%	3%	4%	7%	1%	3%	1%	3%	2%	3%	3%	2%	3%	5%	3%	2%	3%	4%	3%	2%	2%	4%	2%	1%	0%	5%	1%	5%	2%	6%	0%	1%
Already voted	17%	16%	25%	32%	12%	21%	16%	34%	23%	23%	23%	20%	30%	20%	23%	29%	4%	23%	25%	24%	20%	23%	22%	19%	13%	13%	19%	30%	25%	19%	14%	21%	
Definitely vote in-person on Election Day	53%	62%	53%	42%	54%	60%	66%	50%	56%	55%	55%	53%	60%	47%	50%	55%	42%	63%	55%	48%	57%	58%	47%	62%	48%	59%	61%	63%	45%	59%	44%	43%	47%
Probably vote in-person on Election Day	25%	10%	10%	10%	18%	17%	9%	10%	14%	11%	11%	13%	12%	11%	18%	12%	18%	20%	11%	13%	12%	13%	16%	10%	23%	20%	18%	11%	11%	8%	20%	32%	29%
Definitely vote absentee by mail	4%	3%	6%	9%	7%	1%	6%	5%	4%	7%	5%	6%	5%	7%	4%	6%	6%	9%	6%	7%	4%	5%	8%	4%	5%	4%	2%	5%	7%	5%	7%	9%	2%
Probably vote absentee by mail	0%	3%	3%	3%	3%	1%	1%	1%	0%	3%	2%	2%	1%	2%	2%	2%	3%	2%	3%	0%	2%	3%	1%	3%	4%	1%	1%	3%	1%	4%	3%	0%	
Definitely vote absentee in-person	2%	4%	2%	3%	3%	1%	2%	0%	2%	2%	2%	2%	1%	3%	2%	2%	1%	0%	2%	3%	2%	1%	3%	1%	0%	0%	1%	1%	3%	2%	3%	0%	1%
Probably vote absentee in-person	0%	2%	2%	1%	4%	0%	1%	0%	1%	0%	1%	1%	0%	1%	3%	1%	1%	3%	2%	1%	1%	1%	1%	1%	0%	4%	0%	2%	0%	3%	0%	0%	
Already voted by mail	8%	7%	11%	21%	6%	9%	9%	20%	13%	13%	11%	13%	9%	17%	13%	13%	16%	4%	12%	14%	11%	12%	15%	9%	14%	8%	4%	9%	18%	13%	12%	6%	15%
Already voted early in person	8%	9%	13%	11%	5%	12%	7%	13%	9%	10%	12%	10%	11%	12%	8%	10%	13%	0%	10%	11%	13%	8%	8%	13%	5%	6%	9%	10%	12%	12%	7%	7%	6%

How do you plan to vote in the November general election for U.S. Senate, Governor, and state legislature?

Trend: Vote Method



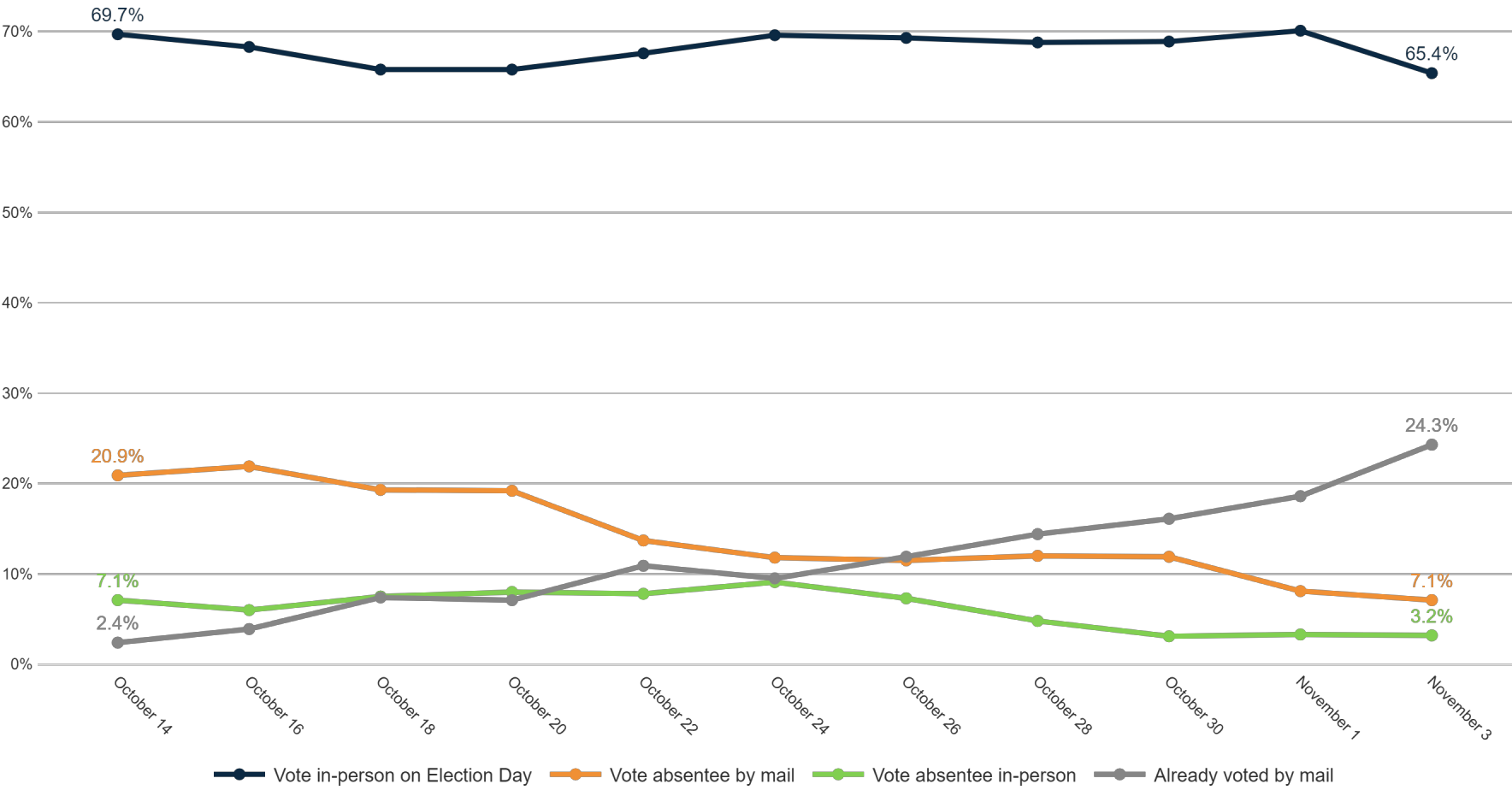
Trend: Vote Method (Definitely/ Probably Vote)



MRP Estimates: Vote Method

Voter Group

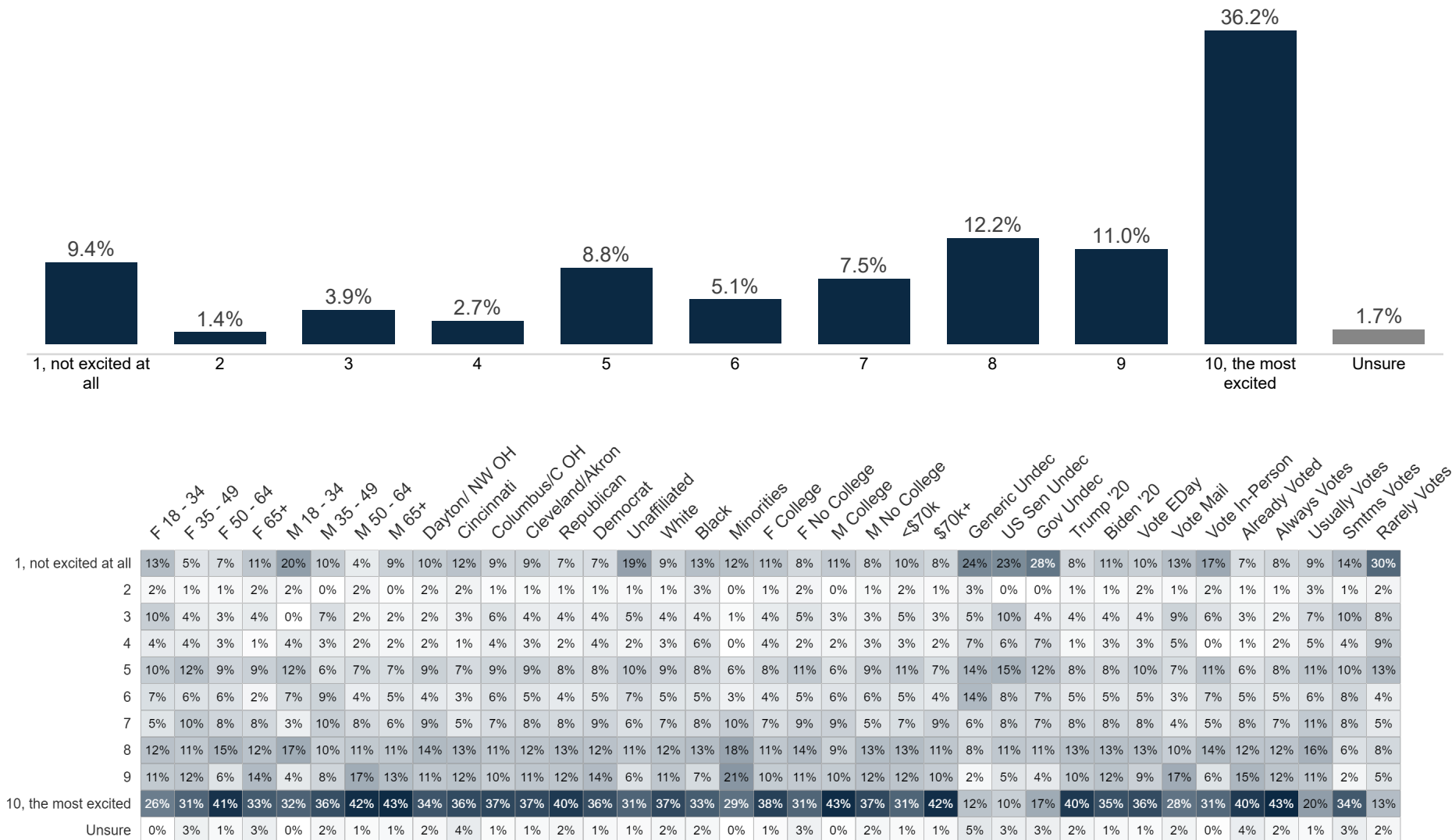
Youngstown



Enthusiasm

Fielding Date

November 3

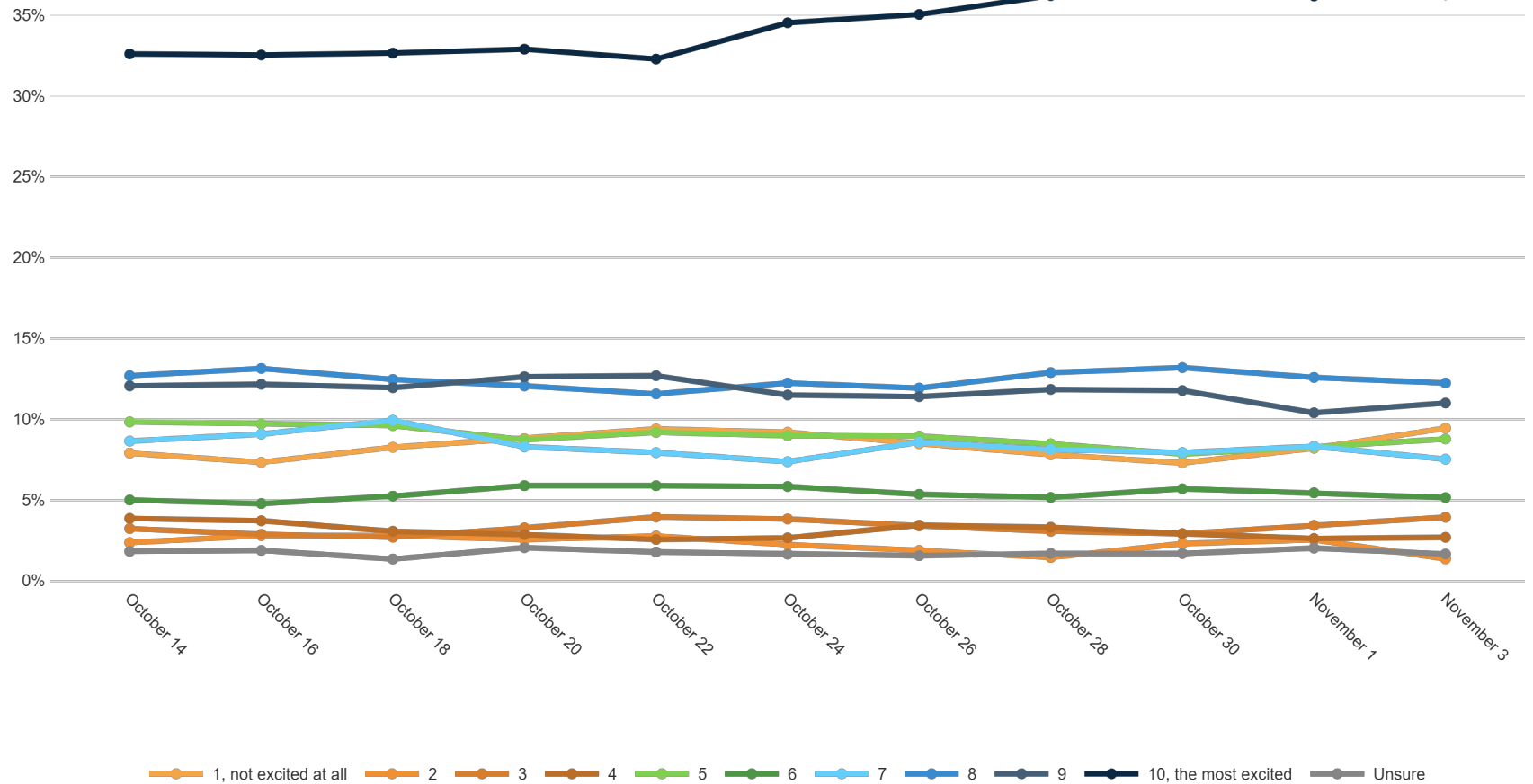


How excited are you to vote in the November general election for Governor, Congress, and state legislature on a scale of 1 to 10, with 1 being not excited at all and 10 being very excited?



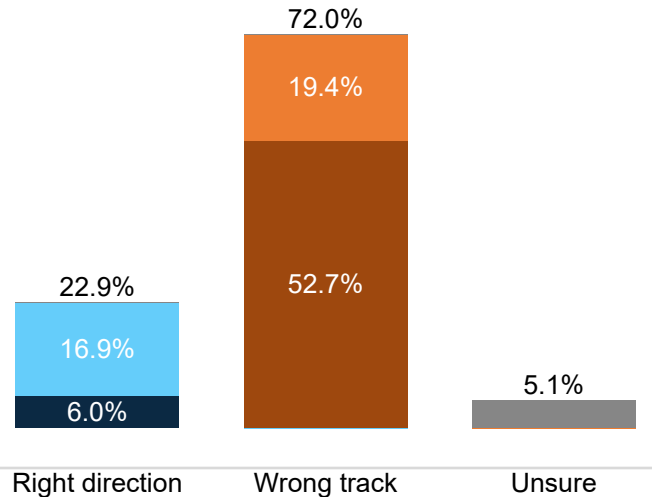
CYGNAL

Trend: Enthusiasm



US Right Direction/ Wrong Track

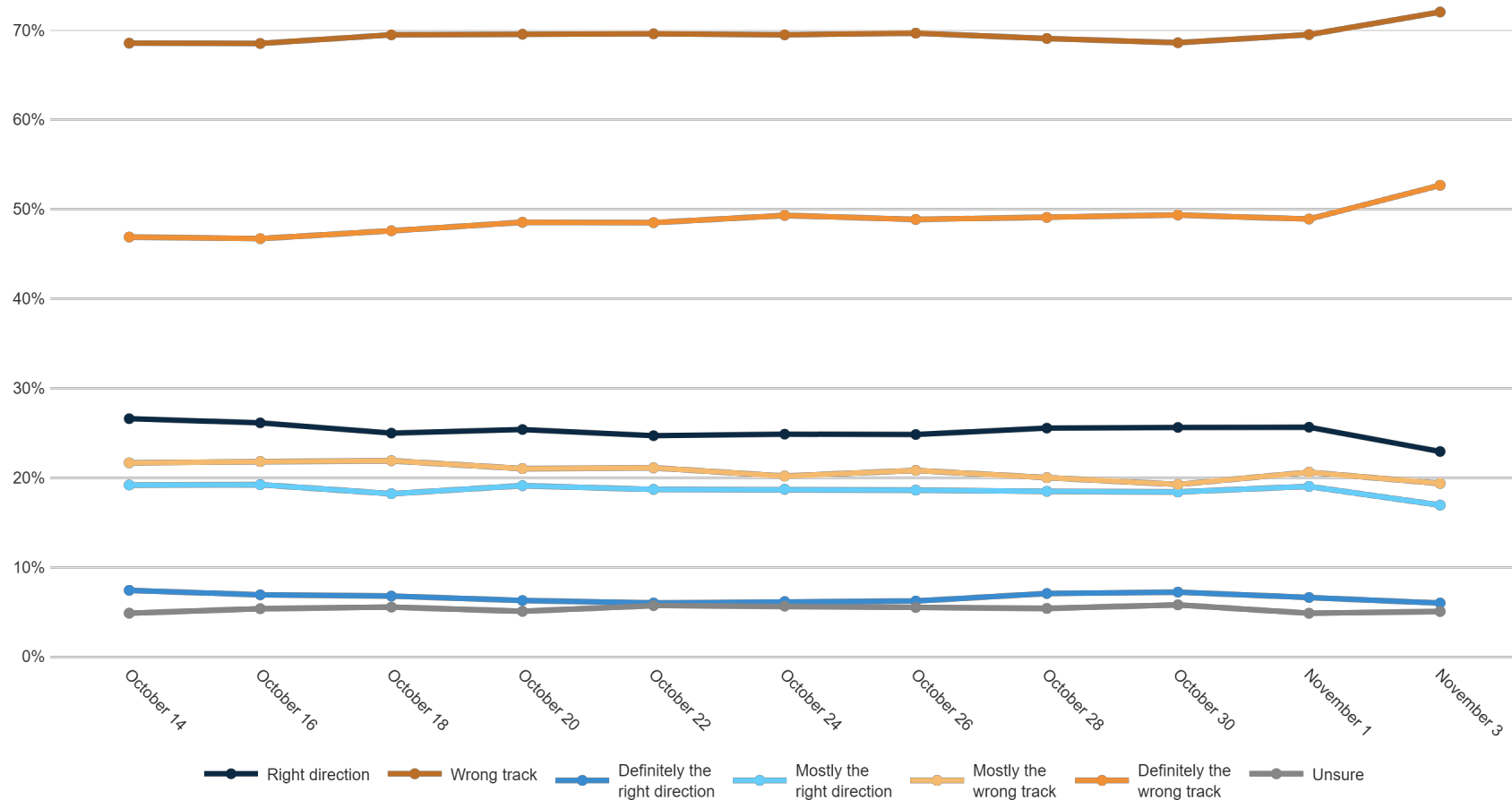
Fielding Date **November 3**



		F 18 - 34	F 35 - 49	F 50 - 64	F 65+	M 18 - 34	M 35 - 49	M 50 - 64	M 65+	Dayton/ NW OH	Cincinnati	Columbus/C OH	Cleveland/Akron	Republican	Democrat	Unaffiliated	White	Black	Minorities	F College	F No College	M College	M No College	<\$70k	\$70k+	Generic Undec	US Sen Undec	Gov Undec	Trump '20	Biden '20	Vote EDay	Vote Mail	Vote In-Person	Already Voted	Always Votes	Usually Votes	Smtms Votes	Rarely Votes
	Right direction	15%	21%	29%	28%	23%	18%	19%	24%	21%	22%	26%	23%	5%	49%	21%	22%	37%	15%	26%	24%	23%	19%	23%	23%	5%	11%	9%	4%	48%	18%	31%	31%	33%	23%	22%	20%	22%
	Wrong track	74%	72%	64%	70%	77%	73%	76%	75%	76%	73%	69%	72%	94%	43%	70%	74%	55%	75%	65%	72%	72%	77%	72%	71%	77%	77%	76%	95%	44%	77%	64%	65%	60%	73%	70%	76%	66%
Definitely the right direction		5%	5%	5%	8%	6%	5%	8%	6%	4%	8%	8%	5%	2%	14%	3%	5%	13%	5%	7%	5%	6%	6%	6%	6%	0%	1%	0%	2%	12%	5%	7%	7%	7%	6%	5%	4%	13%
	Mostly the right direction	11%	17%	24%	20%	17%	14%	12%	18%	17%	14%	18%	17%	3%	35%	18%	17%	24%	10%	19%	19%	17%	13%	17%	18%	5%	10%	9%	2%	36%	13%	24%	25%	26%	17%	17%	16%	9%
Mostly the wrong track		37%	22%	14%	17%	24%	22%	14%	15%	19%	20%	21%	18%	13%	26%	22%	18%	28%	43%	22%	20%	21%	15%	22%	18%	37%	36%	17%	13%	26%	20%	26%	16%	14%	16%	27%	28%	24%
	Definitely the wrong track	37%	50%	50%	52%	53%	51%	63%	60%	57%	53%	48%	54%	81%	17%	48%	56%	27%	32%	43%	51%	51%	62%	50%	54%	40%	41%	59%	82%	18%	57%	38%	48%	46%	57%	43%	48%	42%
Unsure		11%	7%	7%	2%	0%	9%	5%	2%	4%	5%	6%	5%	1%	8%	9%	4%	8%	10%	9%	4%	5%	4%	5%	5%	18%	13%	15%	1%	8%	4%	5%	4%	8%	4%	7%	4%	12%

Generally speaking, would you say things in the United States are headed in the right direction or off on the wrong track?

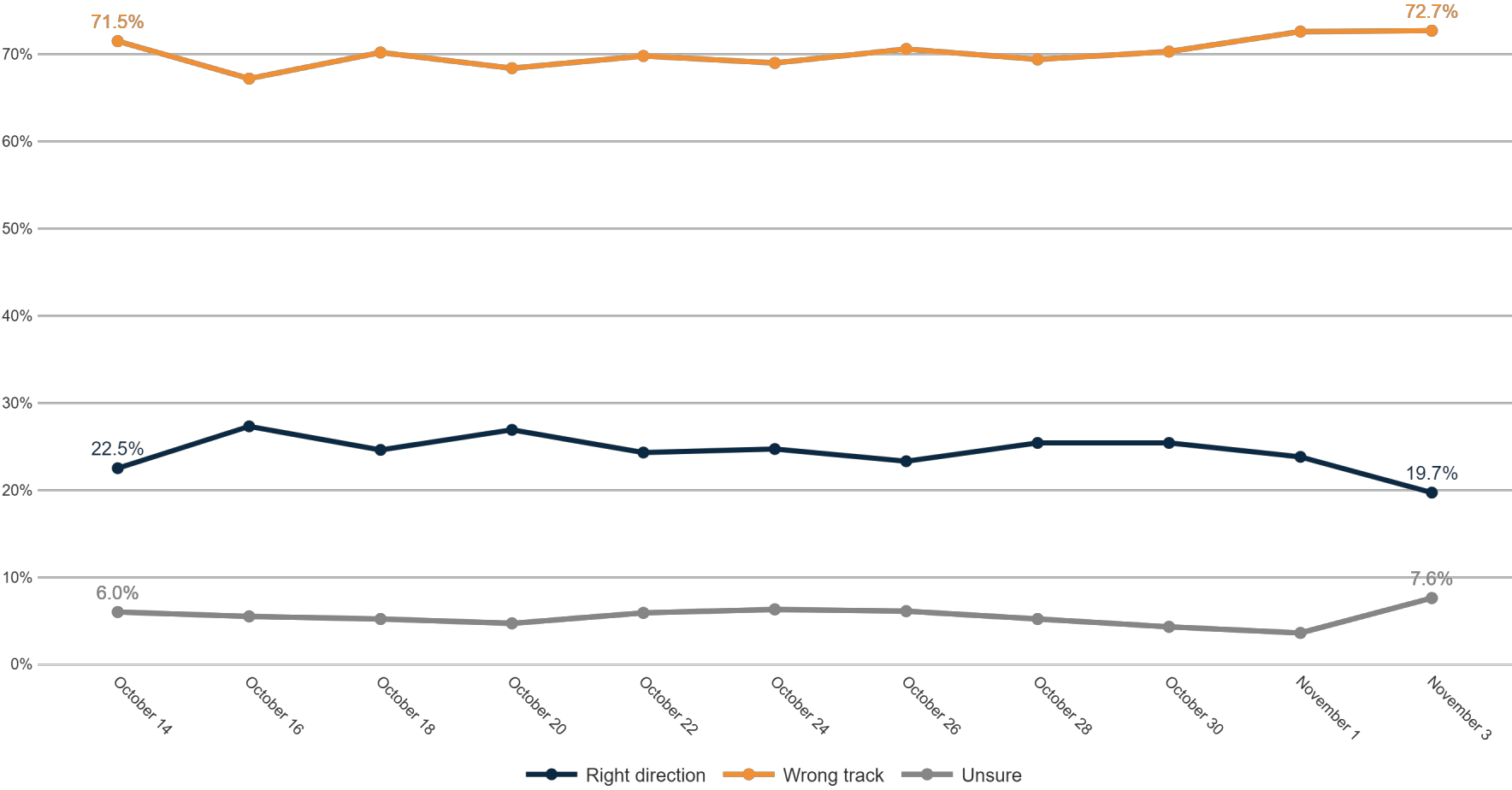
Trend: US Right Direction/ Wrong Track



MRP Estimates: US RD/WT

Voter Group

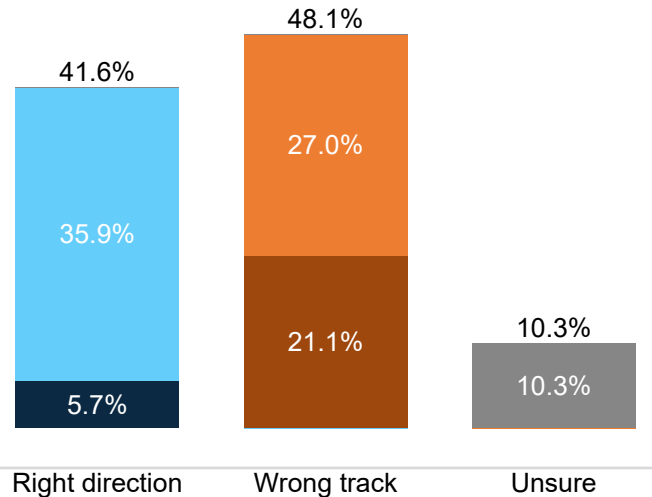
Youngstown



OH Right Direction/ Wrong Track

Fielding Date

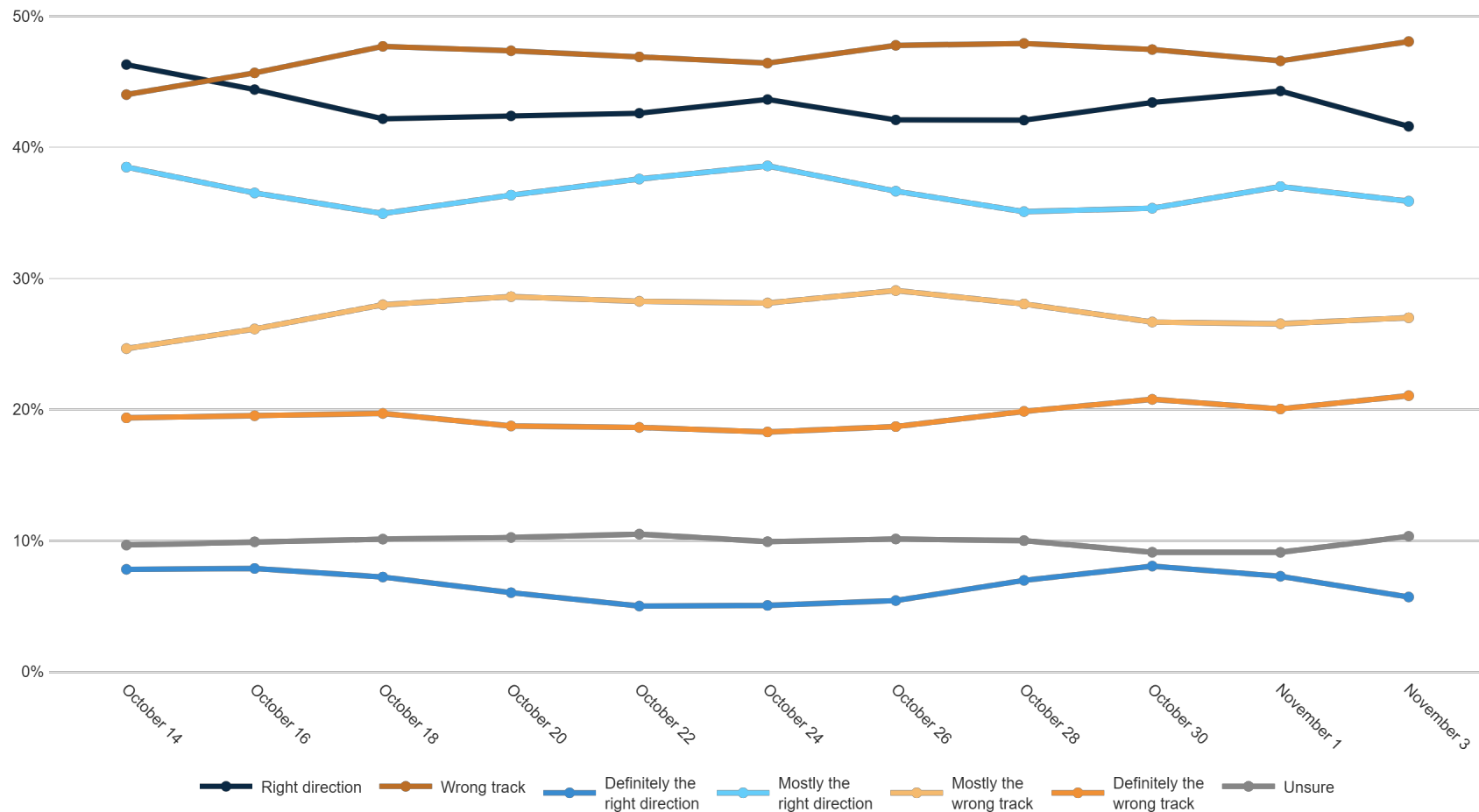
November 3



		F 18 - 34				F 35 - 49				F 50 - 64				F 65+				M 18 - 34				M 35 - 49				M 50 - 64				M 65+				Dayton/ NW OH		Cincinnati		Columbus/C OH		Cleveland/Akron		Republican		Democrat		Unaffiliated		White		Black		Minorities		F College		F No College		M College		M No College		<\$70k		\$70k+		Generic Undec		US Sen Undec		Gov Undec		Trump '20		Biden '20		Vote EDay		Vote Mail		Vote In-Person		Already Voted		Always Voted		Usually Voted		Smtms Votes		Rarely Votes	
Definitely the right direction	Right direction	28%	27%	37%	48%	39%	39%	48%	55%	46%	37%	42%	41%	53%	32%	34%	43%	40%	23%	35%	39%	51%	44%	43%	41%	23%	29%	16%	50%	31%	42%	46%	51%	39%	44%	39%	32%	20%																																																					
	Wrong track	60%	64%	51%	42%	51%	51%	41%	37%	46%	52%	47%	49%	37%	58%	55%	48%	45%	60%	53%	51%	41%	46%	47%	50%	52%	46%	63%	40%	59%	48%	48%	44%	48%	47%	48%	51%	65%																																																					
	Definitely the right direction	3%	4%	3%	7%	10%	5%	8%	6%	4%	9%	5%	6%	7%	6%	3%	6%	6%	3%	5%	5%	7%	7%	6%	5%	0%	1%	0%	7%	4%	6%	11%	6%	3%	6%	4%	6%	5%																																																					
	Mostly the right direction	25%	23%	35%	40%	30%	34%	41%	48%	42%	28%	37%	35%	46%	26%	30%	37%	34%	20%	30%	34%	44%	37%	37%	35%	23%	28%	16%	43%	27%	36%	35%	45%	35%	38%	35%	26%	15%																																																					
	Mostly the wrong track	38%	34%	29%	25%	21%	27%	24%	20%	26%	32%	26%	27%	22%	33%	28%	27%	24%	35%	29%	31%	22%	24%	27%	27%	35%	29%	35%	23%	33%	27%	29%	19%	28%	25%	31%	31%	41%																																																					
	Definitely the wrong track	22%	30%	22%	17%	30%	24%	17%	16%	20%	19%	21%	22%	15%	25%	27%	21%	20%	25%	24%	20%	19%	22%	20%	23%	17%	17%	28%	17%	26%	21%	19%	25%	20%	22%	17%	20%	24%																																																					
Unsure	Unsure	12%	9%	12%	10%	10%	10%	11%	9%	8%	11%	11%	10%	9%	10%	11%	9%	15%	18%	12%	10%	9%	10%	10%	9%	25%	25%	21%	10%	10%	10%	6%	5%	13%	9%	13%	17%	15%																																																					

Generally speaking, would you say things in Ohio are headed in the right direction or off on the wrong track?

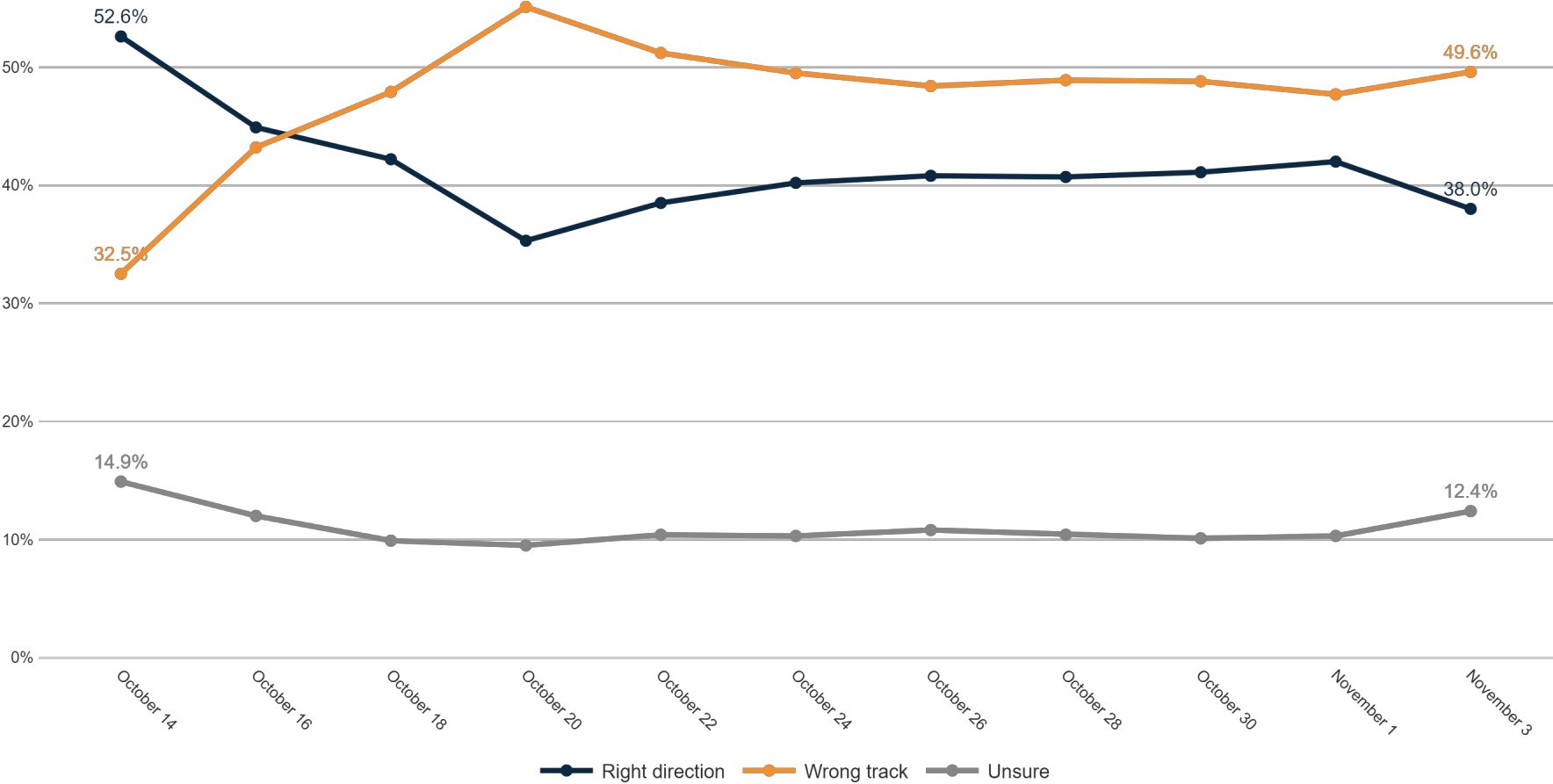
Trend: OH Right Direction/ Wrong Track



MRP Estimates: OH RD/WT

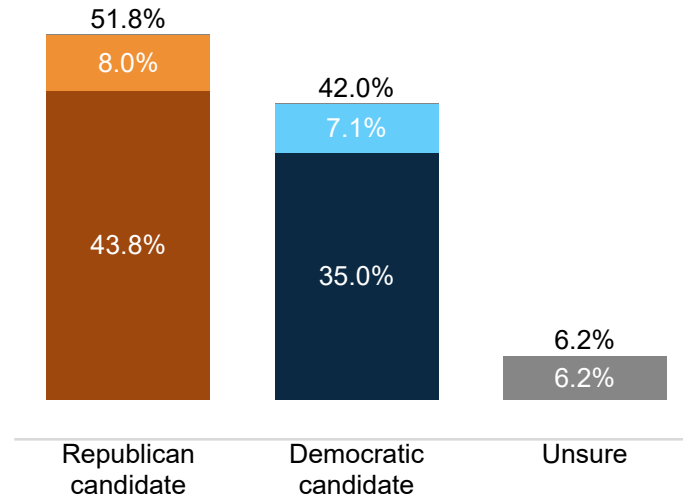
Voter Group

Youngstown



Generic Ballot

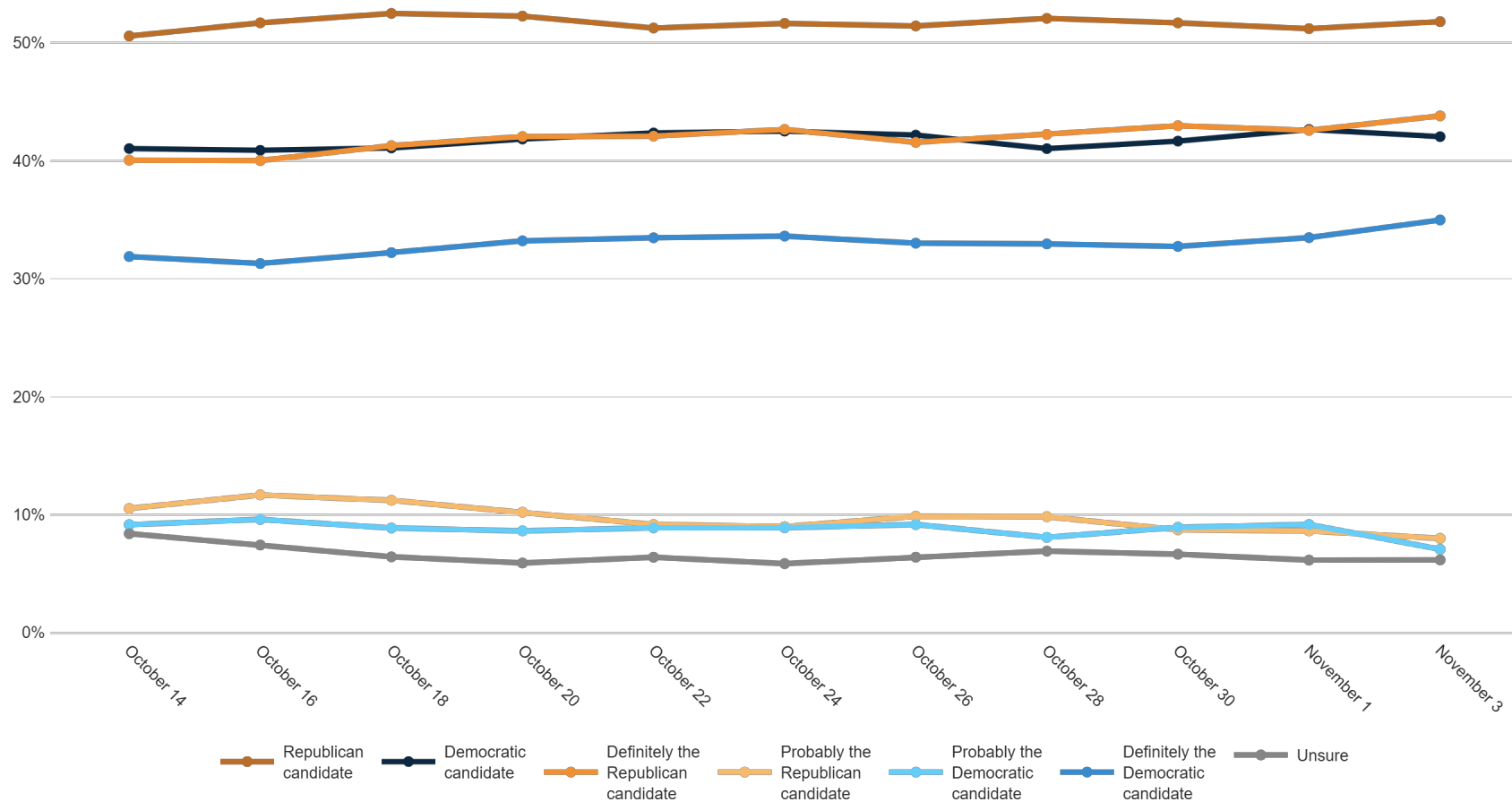
Fielding Date **November 3**



	F 18 - 34	F 35 - 49	F 50 - 64	F 65+	M 18 - 34	M 35 - 49	M 50 - 64	M 65+	Dayton/ NW OH	Cincinnati	Columbus/C OH	Cleveland/Akron	Republican	Democrat	Unaffiliated	White	Black	Minorities	F College	F No College	M College	M No College	<\$70k	\$70k+	US Sen Undec	Gov Undec	Trump '20	Biden '20	Vote EDay	Vote Mail	Vote In-Person	Already Voted	Usually Votes	Smtms Votes	Rarely Votes	
Republican candidate	35%	42%	47%	56%	53%	46%	63%	64%	57%	51%	52%	50%	93%	7%	36%	56%	24%	37%	37%	53%	51%	62%	50%	53%	32%	31%	91%	5%	58%	40%	26%	41%	55%	44%	61%	35%
Democratic candidate	52%	50%	47%	40%	45%	43%	33%	33%	37%	41%	42%	45%	4%	92%	47%	39%	67%	62%	57%	39%	45%	33%	43%	42%	20%	26%	4%	91%	35%	53%	72%	54%	41%	49%	32%	32%
Definitely the Republican candidate	26%	35%	38%	50%	39%	39%	57%	56%	49%	42%	43%	42%	83%	4%	24%	47%	19%	26%	30%	44%	42%	54%	41%	46%	15%	22%	80%	3%	49%	28%	24%	36%	49%	32%	42%	27%
Probably the Republican candidate	10%	7%	9%	7%	14%	7%	6%	8%	7%	9%	8%	8%	11%	2%	12%	8%	5%	12%	6%	9%	8%	8%	8%	7%	17%	8%	11%	2%	9%	12%	2%	5%	6%	12%	19%	7%
Probably the Democratic candidate	15%	4%	8%	5%	6%	6%	9%	4%	4%	4%	9%	8%	2%	11%	11%	6%	14%	12%	7%	8%	7%	6%	9%	6%	11%	15%	2%	11%	7%	10%	17%	5%	5%	13%	14%	3%
Definitely the Democratic candidate	37%	46%	39%	35%	38%	37%	24%	29%	33%	36%	33%	37%	2%	81%	37%	33%	53%	50%	50%	31%	38%	26%	34%	37%	8%	11%	2%	79%	29%	42%	55%	48%	36%	35%	18%	29%
Unsure	13%	8%	7%	4%	3%	11%	4%	3%	7%	8%	6%	5%	3%	1%	17%	5%	8%	1%	6%	8%	4%	5%	7%	5%	48%	43%	5%	4%	7%	7%	2%	5%	4%	7%	7%	33%

If the election was held today, and you had to make a choice, would you vote for the Republican or Democratic candidate for Congress?

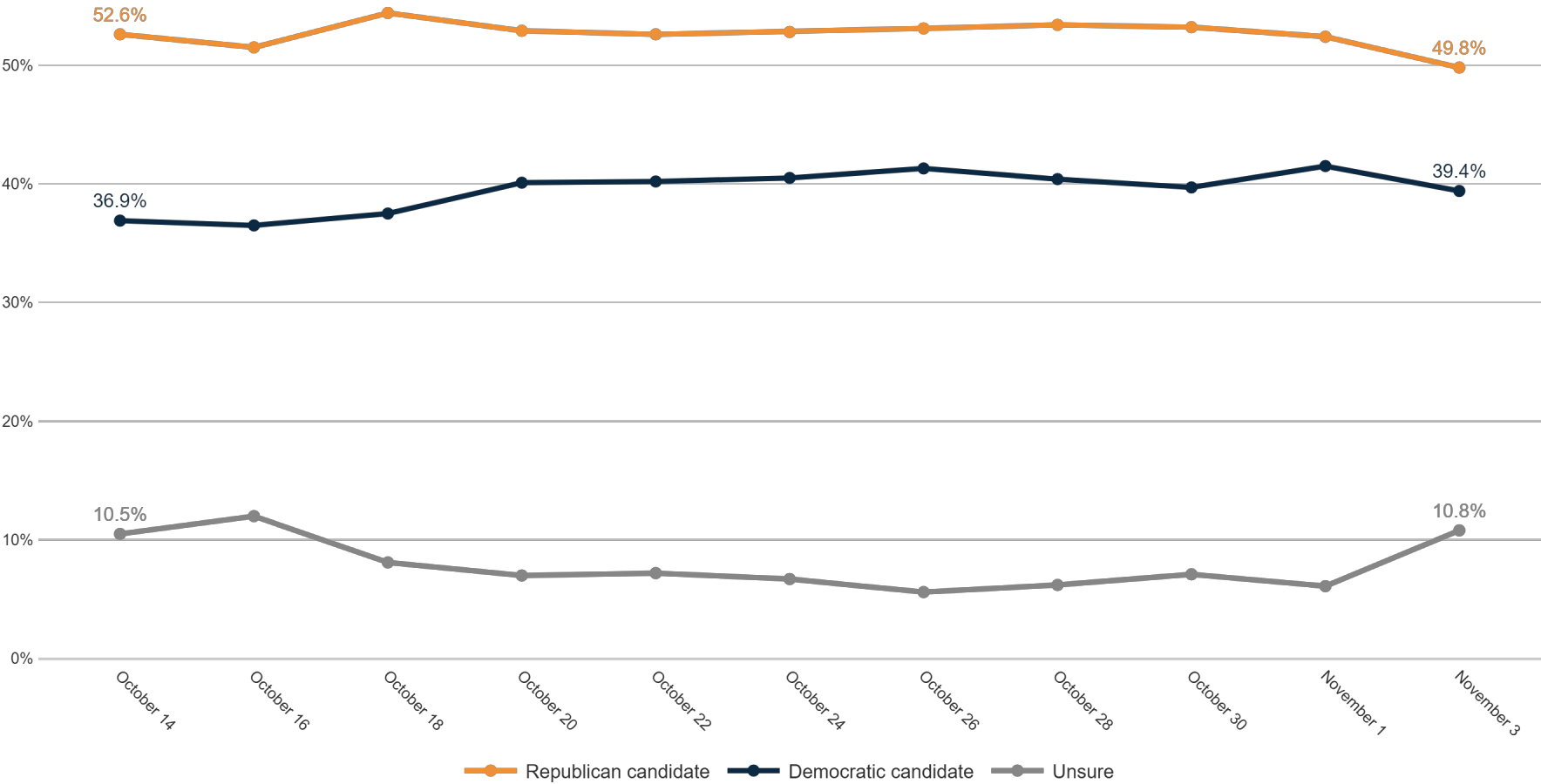
Trend: Generic Ballot



MRP Estimates: Generic Ballot

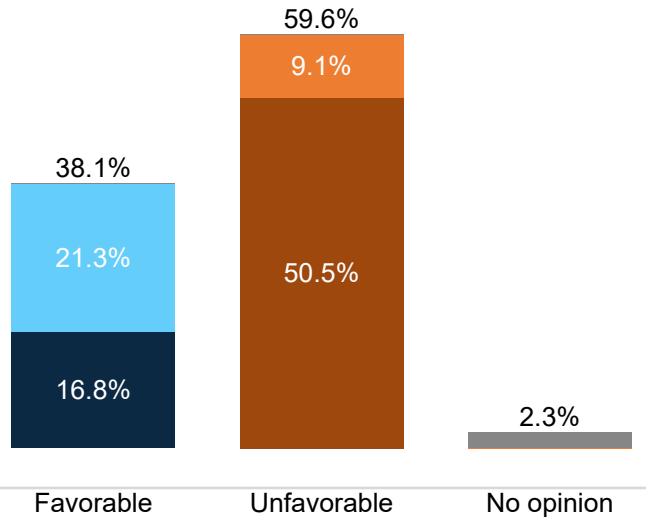
Voter Group

Youngstown



Biden Image

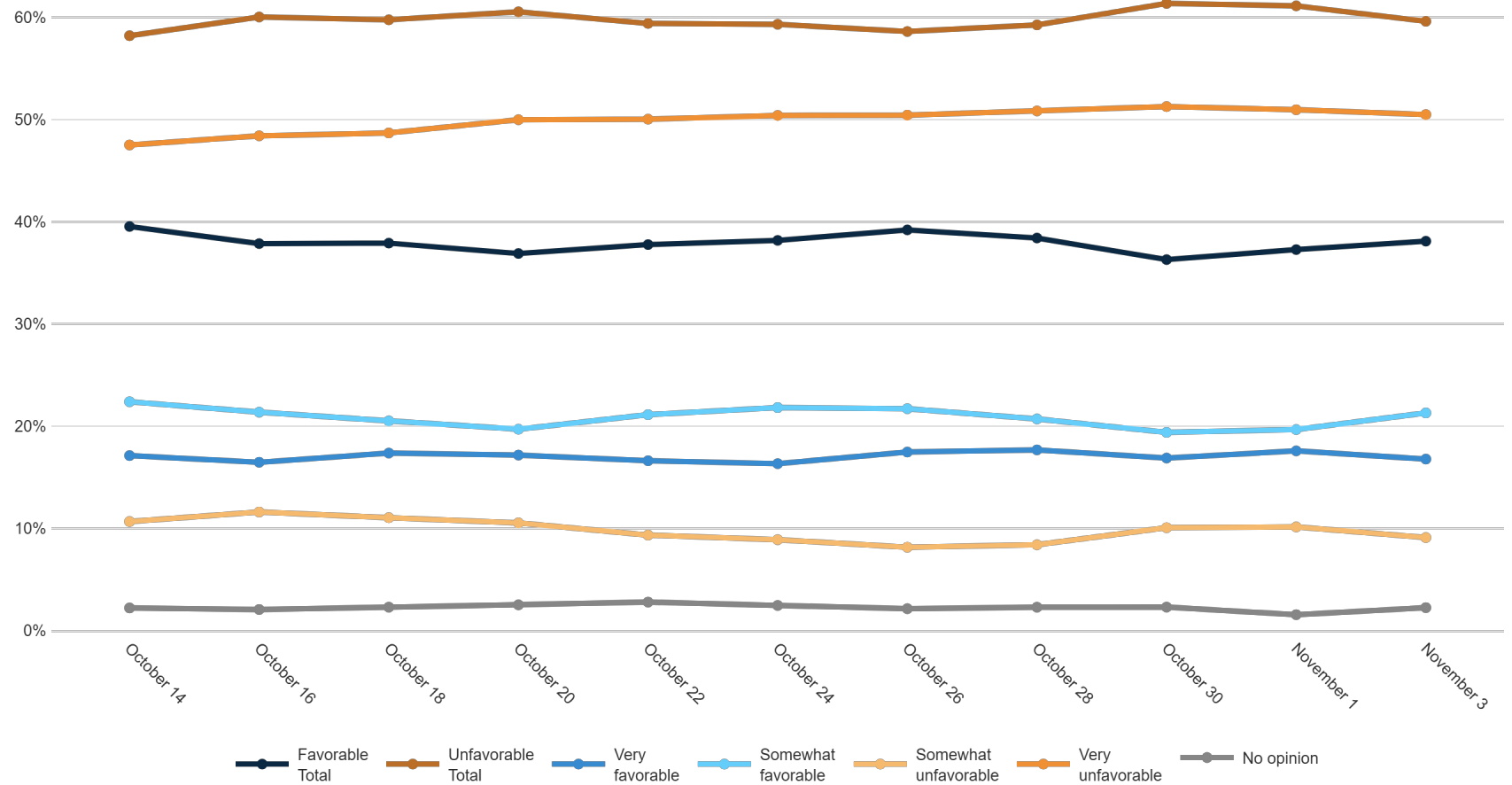
Fielding Date **November 3**



	F 18 - 34	F 35 - 49	F 50 - 64	F 65+	M 18 - 34	M 35 - 49	M 50 - 64	M 65+	Dayton/ NW OH	Cincinnati	Columbus/C OH	Cleveland/Akron	Republican	Democrat	Unaffiliated	White	Black	Minorities	F College	F No College	M College	M No College	<\$70k	\$70k+	Generic Undec	US Sen Undec	Gov Undec	Trump '20	Biden '20	Vote EDay	Vote Mail	Vote In-Person	Already Voted	Usually Votes	Smtms Votes	Rarely Votes	
Favorable Total	39%	47%	45%	37%	42%	36%	31%	33%	32%	39%	38%	41%	5%	84%	39%	36%	64%	44%	51%	35%	39%	31%	39%	38%	18%	19%	24%	4%	83%	31%	54%	62%	51%	37%	45%	30%	28%
Unfavorable Total	57%	50%	52%	63%	58%	61%	66%	66%	65%	60%	59%	57%	94%	14%	57%	63%	32%	56%	45%	63%	58%	67%	59%	60%	63%	68%	59%	95%	14%	67%	46%	38%	47%	62%	52%	66%	62%
Very favorable	8%	16%	22%	23%	13%	9%	16%	19%	14%	20%	16%	18%	2%	40%	13%	15%	36%	19%	23%	16%	15%	14%	16%	17%	1%	2%	1%	2%	37%	13%	21%	11%	26%	19%	12%	12%	13%
Somewhat favorable	31%	31%	23%	14%	30%	27%	15%	14%	18%	19%	22%	23%	3%	44%	26%	21%	28%	24%	28%	19%	24%	17%	23%	21%	17%	17%	22%	2%	46%	18%	33%	51%	24%	18%	33%	18%	14%
Somewhat unfavorable	22%	8%	6%	8%	14%	12%	6%	4%	8%	7%	10%	10%	7%	8%	16%	9%	9%	21%	10%	10%	10%	7%	12%	7%	24%	22%	13%	6%	9%	10%	13%	10%	6%	6%	14%	15%	23%
Very unfavorable	35%	42%	46%	55%	44%	49%	59%	62%	57%	53%	49%	48%	88%	6%	41%	54%	22%	34%	35%	53%	48%	61%	47%	53%	39%	46%	46%	89%	5%	57%	32%	28%	41%	55%	38%	51%	40%
No opinion	4%	3%	3%	0%	0%	3%	3%	1%	3%	1%	3%	2%	1%	2%	4%	2%	4%	1%	4%	2%	3%	1%	2%	2%	19%	14%	17%	1%	3%	3%	0%	0%	2%	2%	3%	4%	10%

Do you have a favorable or unfavorable opinion of Joe Biden?

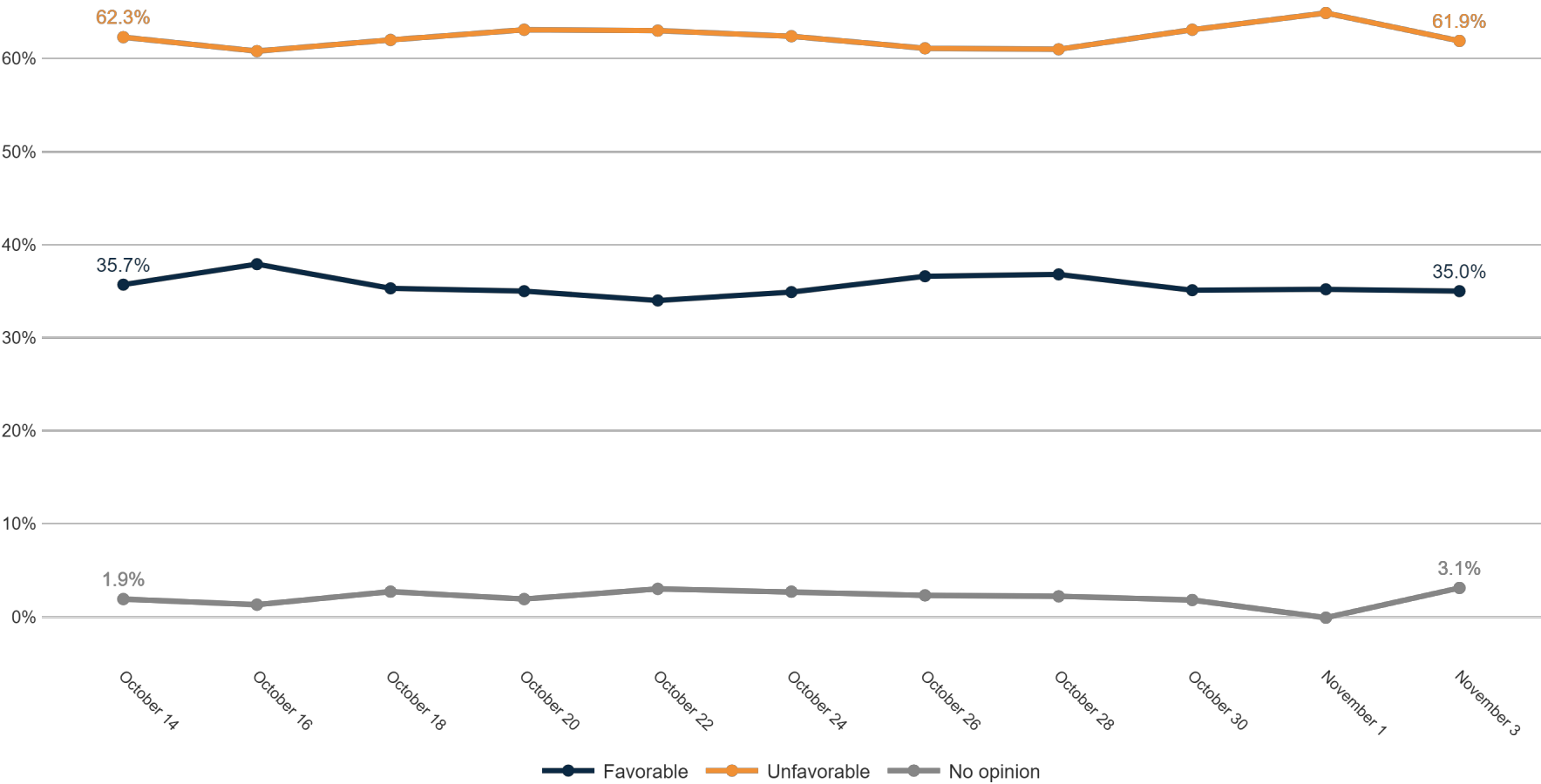
Trend: Biden Image



MRP Estimates: Biden Image

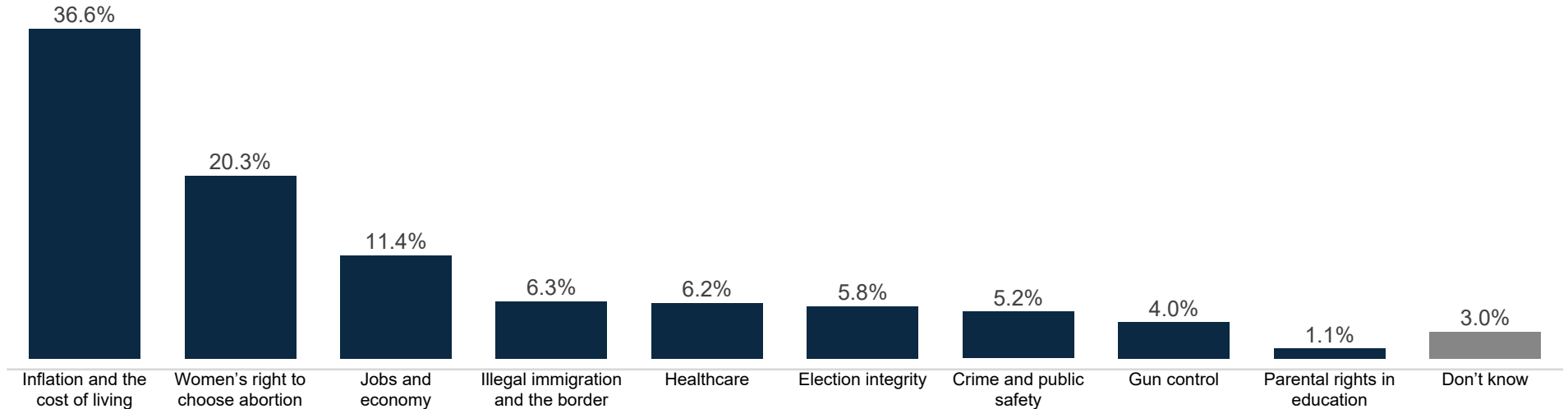
Voter Group

Youngstown



Top Priority

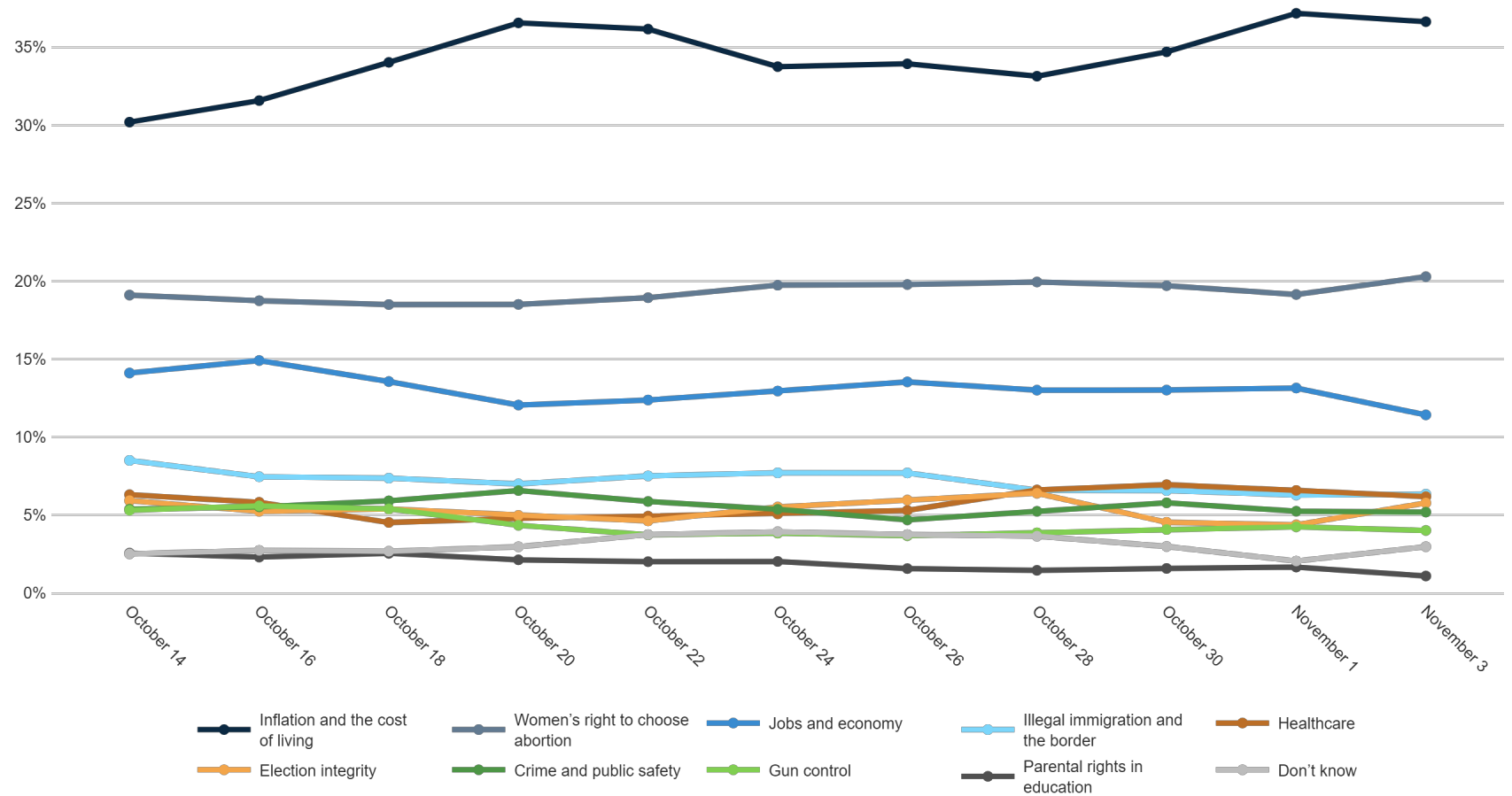
Fielding Date **November 3**



	F 18 - 34	F 35 - 49	F 50 - 64	F 65+	M 18 - 34	M 35 - 49	M 50 - 64	M 65+	Dayton/ NW OH	Cincinnati	Columbus/C OH	Cleveland/Akron	Republican	Democrat	Unaffiliated	White	Black	Minorities	F College	F No College	M College	M No College	<\$70k	\$70k+	Generic Undec	US Sen Undec	Gov Undec	Trump '20	Biden '20	Vote EDay	Vote Mail	Vote In-Person	Already Voted	Usually Voted	Smtms Votes	Rarely Votes	
Inflation and the cost of living	31%	28%	36%	42%	31%	37%	41%	40%	37%	35%	38%	36%	54%	15%	35%	38%	28%	23%	26%	41%	36%	40%	38%	36%	35%	41%	27%	55%	16%	39%	36%	28%	32%	36%	38%	36%	35%
Women's right to choose abortion	36%	36%	25%	16%	15%	21%	10%	10%	20%	20%	19%	21%	3%	43%	22%	20%	18%	35%	38%	19%	21%	9%	18%	24%	15%	17%	15%	3%	42%	18%	22%	28%	26%	21%	20%	15%	18%
Jobs and economy	9%	11%	10%	9%	15%	15%	14%	10%	11%	12%	11%	12%	13%	11%	11%	12%	14%	7%	9%	10%	12%	15%	12%	12%	9%	12%	11%	13%	10%	14%	9%	11%	6%	11%	12%	17%	10%
Illegal immigration and the border	4%	2%	6%	8%	5%	4%	8%	11%	11%	6%	5%	5%	11%	1%	4%	7%	5%	0%	3%	7%	5%	9%	6%	6%	13%	6%	8%	11%	1%	7%	6%	2%	6%	7%	3%	11%	3%
Healthcare	6%	2%	8%	3%	4%	8%	9%	9%	7%	5%	8%	5%	3%	11%	6%	6%	9%	4%	5%	4%	7%	9%	7%	5%	7%	4%	7%	3%	10%	5%	10%	5%	9%	6%	8%	2%	7%
Election integrity	3%	6%	5%	8%	8%	5%	5%	5%	3%	9%	5%	6%	5%	8%	5%	6%	6%	11%	6%	6%	6%	5%	6%	6%	4%	3%	8%	5%	7%	5%	2%	5%	8%	7%	3%	9%	3%
Crime and public safety	2%	8%	5%	6%	3%	4%	7%	6%	5%	4%	4%	6%	7%	4%	3%	5%	10%	8%	5%	5%	5%	5%	5%	5%	0%	2%	2%	6%	4%	6%	7%	3%	3%	5%	7%	5%	5%
Gun control	5%	3%	2%	6%	9%	2%	2%	4%	3%	4%	4%	5%	2%	7%	4%	3%	9%	10%	4%	4%	3%	4%	5%	3%	2%	2%	3%	1%	7%	3%	7%	7%	6%	4%	4%	4%	3%
Parental rights in education	0%	2%	2%	0%	2%	1%	0%	2%	1%	1%	2%	1%	2%	0%	1%	1%	1%	2%	1%	1%	1%	1%	1%	1%	0%	0%	2%	1%	0%	1%	0%	1%	1%	1%	2%	0%	1%
Don't know	4%	2%	2%	1%	9%	5%	2%	2%	2%	3%	3%	3%	1%	1%	8%	2%	2%	0%	3%	2%	4%	4%	2%	3%	16%	13%	18%	2%	3%	3%	0%	10%	3%	2%	3%	1%	15%

From the following list, which issue is personally most important to you that would decide your vote for government?

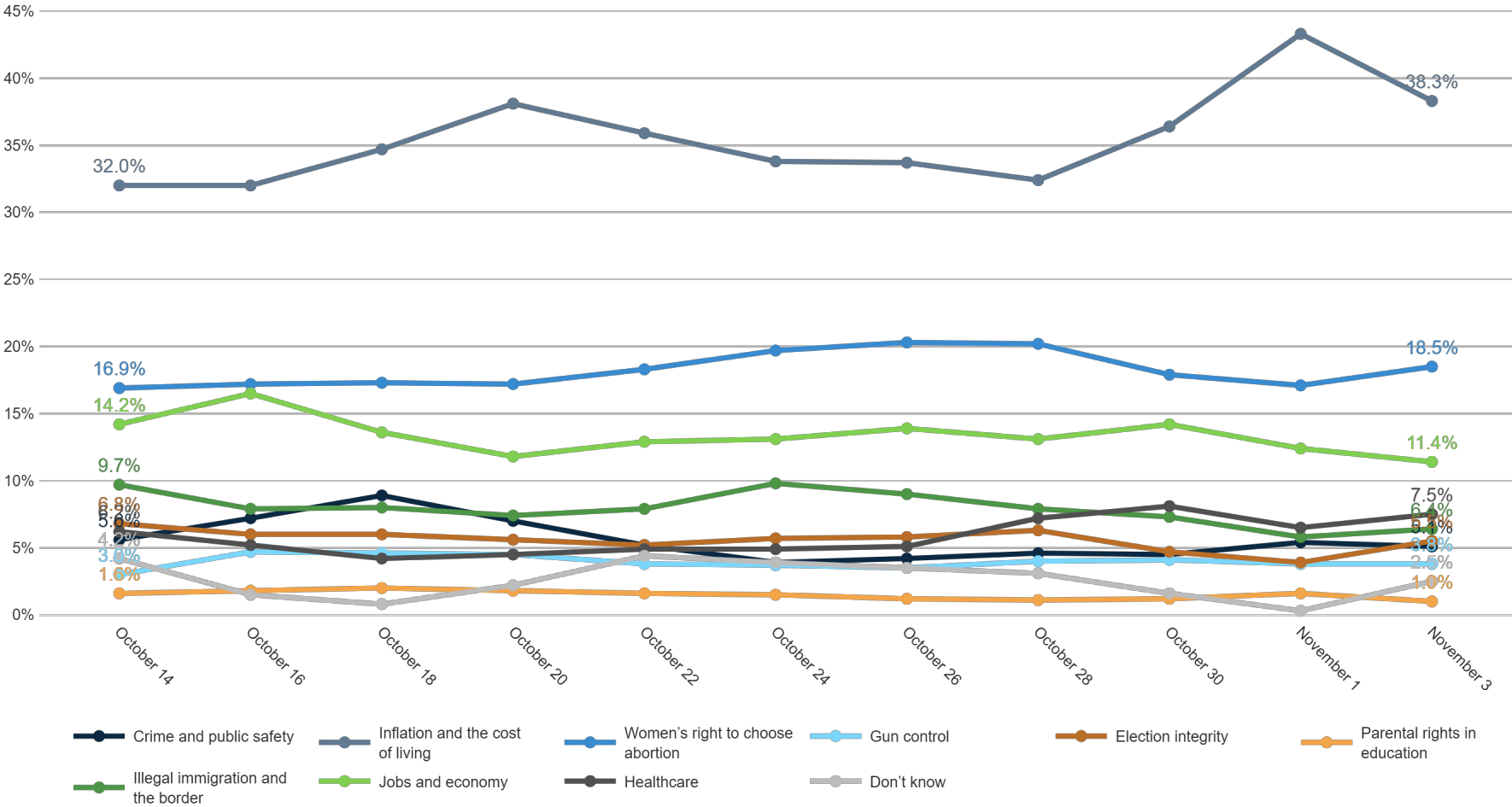
Trend: Top Priority



MRP Estimates: Top Priority

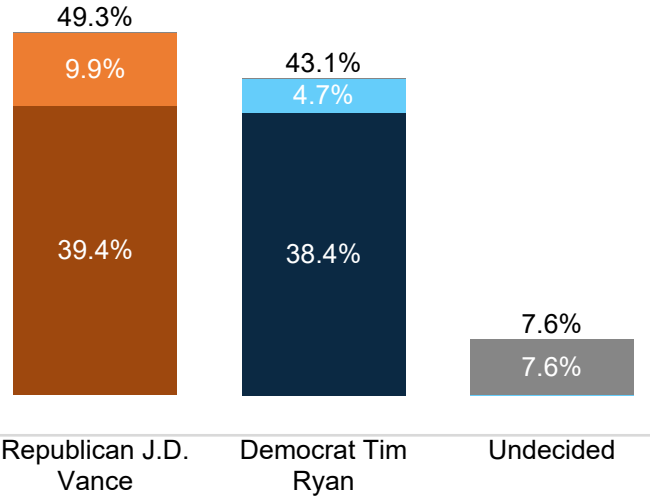
Voter Group

Youngstown



US Senate Ballot

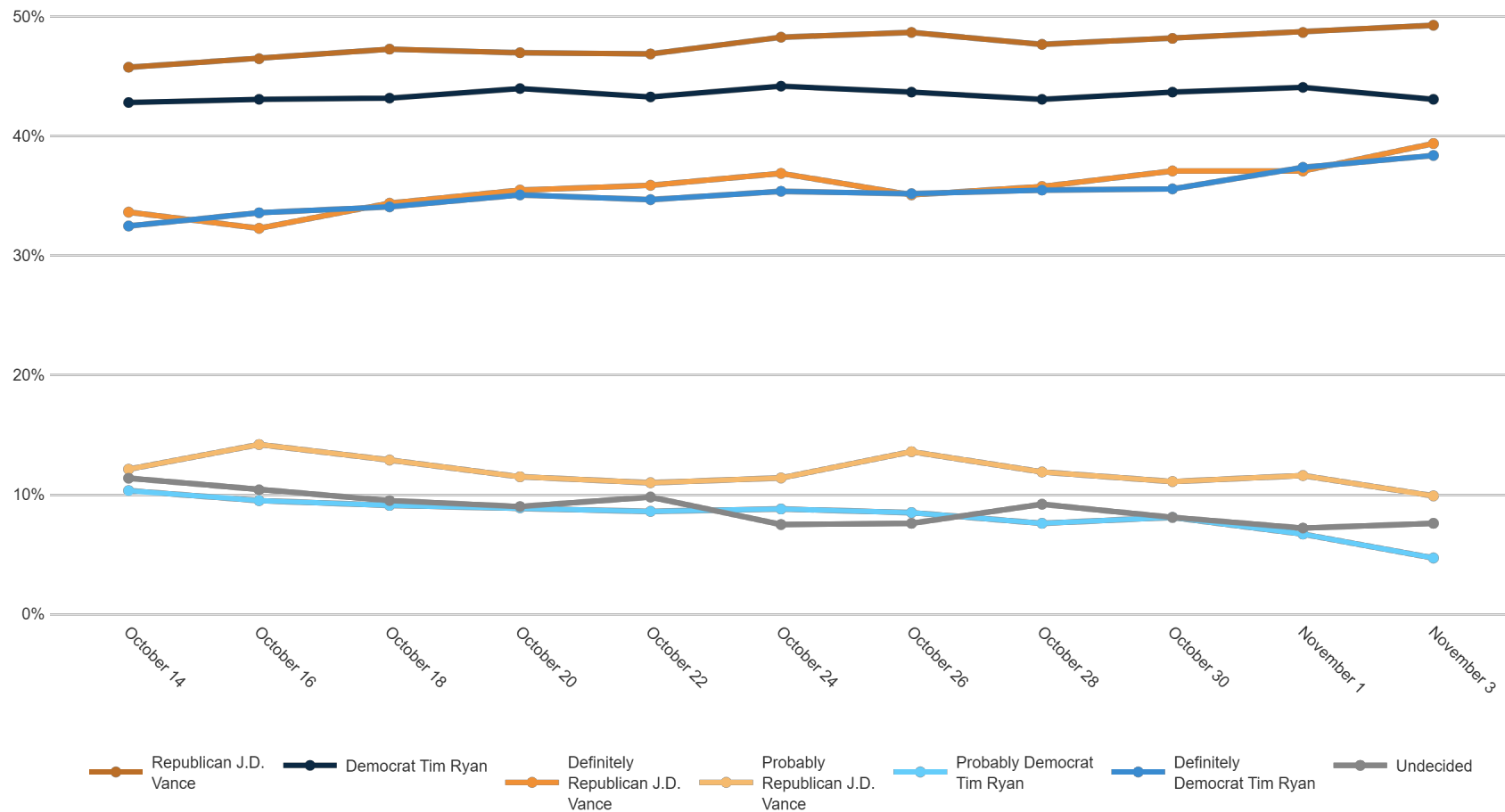
Fielding Date **November 3**



	F 18 - 34	F 35 - 49	F 50 - 64	F 65+	M 18 - 34	M 35 - 49	M 50 - 64	M 65+	Dayton/NW OH	Cincinnati	Columbus/C OH	Cleveland/Akron	Republican	Democrat	Unaffiliated	White	Black	Minorities	F College	F No College	M College	M No College	<\$70k	\$70k+	Generic Undec	Gov Undec	Trump '20	Biden '20	Vote EDay	Vote Mail	Vote In-Person	Already Voted	Usually Votes	Smtms Votes	Rarely Votes	
Republican J.D. Vance	40%	39%	44%	52%	46%	43%	60%	61%	53%	51%	48%	48%	90%	6%	33%	53%	26%	30%	36%	51%	49%	57%	46%	52%	17%	29%	88%	4%	55%	35%	33%	39%	52%	42%	58%	30%
Democrat Tim Ryan	43%	53%	50%	44%	47%	44%	32%	37%	40%	42%	42%	46%	5%	91%	51%	41%	65%	64%	57%	41%	44%	36%	45%	43%	23%	24%	6%	90%	36%	57%	67%	56%	43%	49%	28%	32%
Definitely Republican J.D. Vance	26%	28%	37%	42%	32%	38%	49%	52%	42%	43%	39%	37%	74%	4%	24%	43%	17%	19%	27%	40%	42%	47%	36%	43%	9%	18%	72%	3%	43%	23%	21%	36%	44%	28%	41%	20%
Probably Republican J.D. Vance	14%	11%	8%	10%	14%	5%	11%	9%	11%	8%	9%	11%	16%	2%	9%	10%	9%	11%	8%	11%	8%	11%	10%	10%	9%	11%	16%	1%	12%	12%	12%	4%	8%	14%	17%	10%
Probably Democrat Tim Ryan	9%	6%	5%	3%	4%	5%	3%	3%	3%	7%	4%	5%	1%	8%	6%	3%	14%	9%	4%	6%	5%	3%	6%	3%	8%	6%	1%	8%	5%	6%	12%	4%	2%	10%	9%	11%
Definitely Democrat Tim Ryan	33%	47%	44%	40%	43%	39%	29%	34%	37%	35%	38%	40%	4%	83%	45%	37%	51%	56%	53%	35%	39%	32%	38%	40%	15%	18%	4%	83%	31%	51%	56%	53%	41%	39%	18%	21%
Undecided	18%	8%	6%	4%	7%	13%	7%	2%	7%	7%	10%	7%	5%	3%	16%	6%	9%	6%	7%	8%	7%	7%	9%	5%	59%	47%	7%	6%	9%	8%	0%	4%	5%	9%	15%	38%

If the general election for U.S. Senate was held today, and you had to make a choice, who would you vote for?

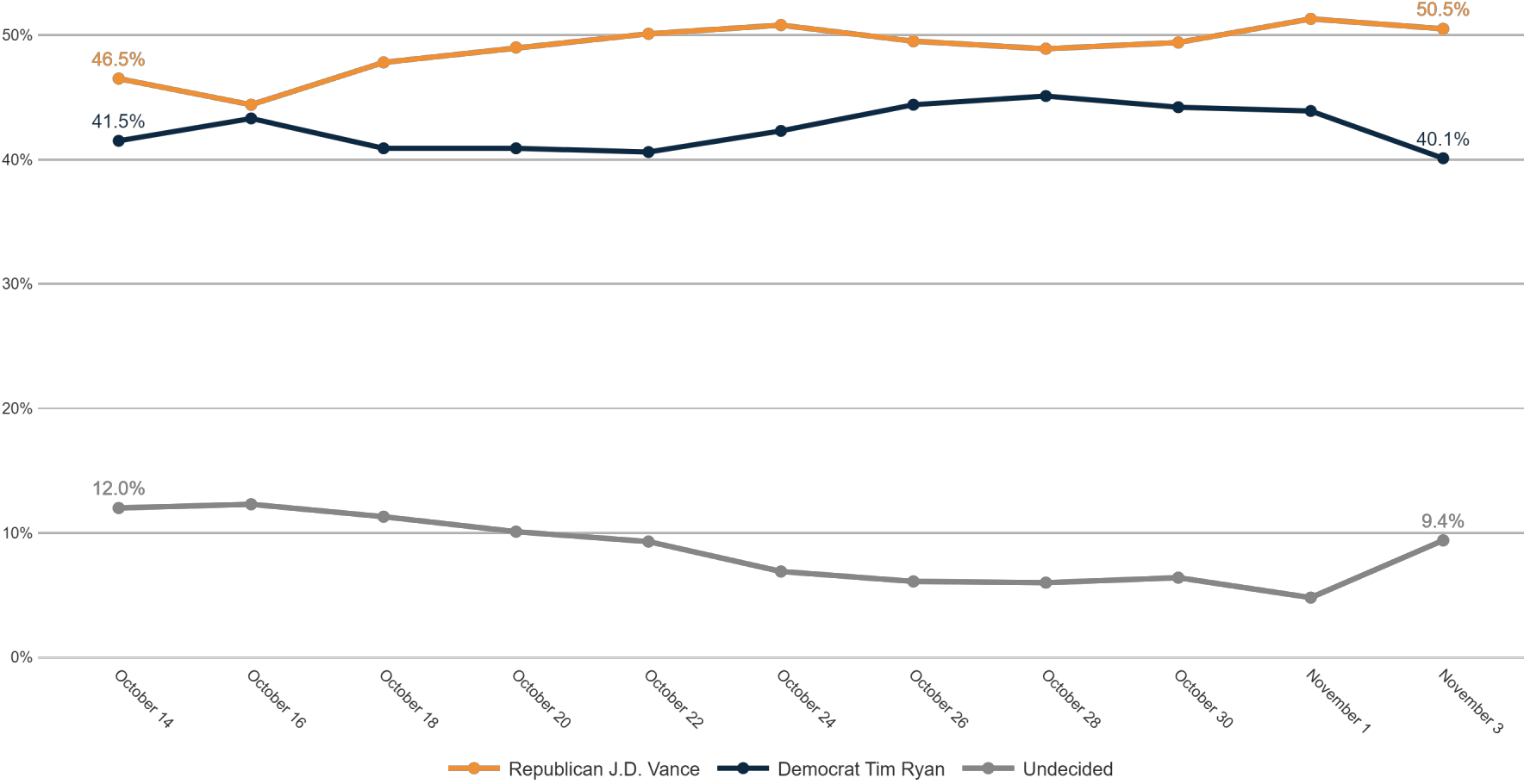
Trend: US Senate Ballot



MRP Estimates: US Senate Ballot

Voter Group

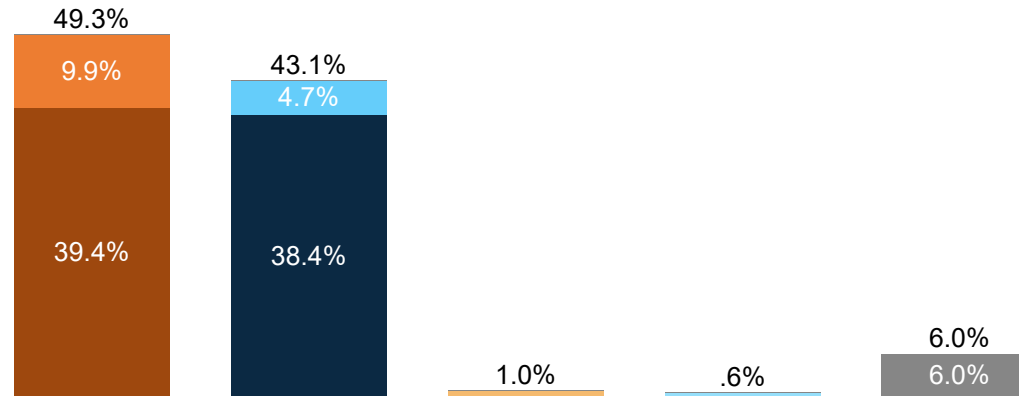
Youngstown



US Senate Ballot + Undecided Probe

Fielding Date

November 3



Republican J.D. Vance Democrat Tim Ryan Lean Republican JD Vance Lean Democrat Tim Ryan Truly Undecided

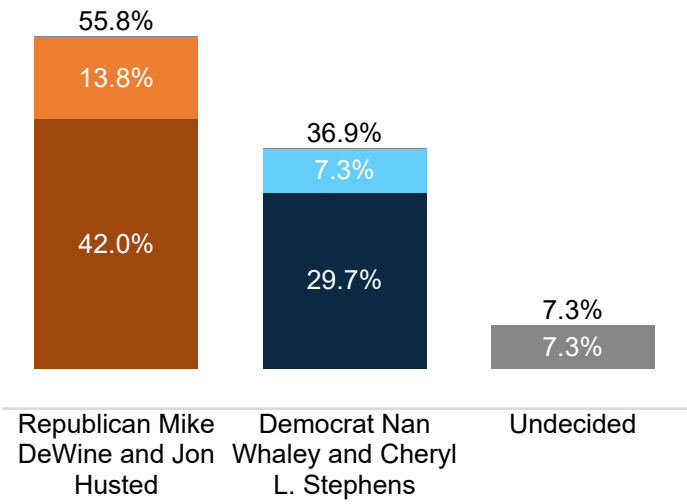
	F 18 - 34				F 35 - 49				F 50 - 64				F 65+				M 18 - 34				M 35 - 49				M 50 - 64				M 65+				Dayton/ NW OH		Cincinnati		Columbus/C OH		Cleveland/Akron		Republican		Democrat		Unaffiliated		White		Black		Minorities		F College		F No College		M College		M No College		<\$70k		\$70k+		Generic Undec		Gov Undec		Trump '20		Biden '20		Vote EDay		Vote Mail		Vote In-Person		Already Voted		Always Votes		Usually Votes		Smrtns Votes		Rarely Votes	
Republican J.D. Vance	40%	39%	44%	52%	46%	43%	60%	61%	53%	51%	48%	48%	90%	6%	33%	53%	26%	30%	36%	51%	49%	57%	46%	52%	17%	29%	88%	4%	55%	35%	33%	39%	52%	42%	58%	30%																																																				
Democrat Tim Ryan	43%	53%	50%	44%	47%	44%	32%	37%	40%	42%	42%	46%	5%	91%	51%	41%	65%	64%	57%	41%	44%	36%	45%	43%	23%	24%	6%	90%	36%	57%	67%	56%	43%	49%	28%	32%																																																				
Undecided	18%	8%	6%	4%	7%	13%	7%	2%	7%	7%	10%	7%	5%	3%	16%	6%	9%	6%	7%	8%	7%	7%	9%	5%	59%	47%	7%	6%	9%	8%	0%	4%	5%	9%	15%	38%																																																				
Definitely Republican J.D. Vance	26%	28%	37%	42%	32%	38%	49%	52%	42%	43%	39%	37%	74%	4%	24%	43%	17%	19%	27%	40%	42%	47%	36%	43%	9%	18%	72%	3%	43%	23%	21%	36%	44%	28%	41%	20%																																																				
Probably Republican J.D. Vance	14%	11%	8%	10%	14%	5%	11%	9%	11%	8%	9%	11%	16%	2%	9%	10%	9%	11%	8%	11%	8%	11%	10%	10%	9%	11%	16%	1%	12%	12%	12%	4%	8%	14%	17%	10%																																																				
Probably Democrat Tim Ryan	9%	6%	5%	3%	4%	5%	3%	3%	3%	7%	4%	5%	1%	8%	6%	3%	14%	9%	4%	6%	5%	3%	6%	3%	8%	6%	1%	8%	5%	6%	12%	4%	2%	10%	9%	11%																																																				
Definitely Democrat Tim Ryan	33%	47%	44%	40%	43%	39%	29%	34%	37%	35%	38%	40%	4%	83%	45%	37%	51%	56%	53%	35%	39%	32%	38%	40%	15%	18%	4%	83%	31%	51%	56%	53%	41%	39%	18%	21%																																																				
Lean Republican JD Vance	1%	0%	1%	1%	4%	1%	1%	1%	1%	0%	2%	1%	1%	0%	2%	1%	0%	3%	0%	1%	0%	2%	2%	0%	2%	3%	2%	1%	1%	4%	0%	1%	1%	2%	1%	6%																																																				
Lean Democrat Tim Ryan	4%	0%	0%	0%	0%	2%	1%	0%	0%	0%	1%	1%	0%	1%	2%	0%	4%	0%	0%	1%	1%	0%	1%	1%	3%	1%	0%	1%	1%	0%	0%	1%	0%	2%	0%	4%																																																				
Truly Undecided	12%	8%	6%	4%	3%	10%	6%	1%	5%	7%	7%	5%	4%	3%	12%	5%	5%	3%	7%	6%	5%	5%	7%	5%	54%	43%	5%	4%	7%	5%	0%	3%	4%	6%	14%	28%																																																				

If the general election for U.S. Senate was held today, and you had to make a choice, who would you vote for?

Governor Ballot

Fielding Date

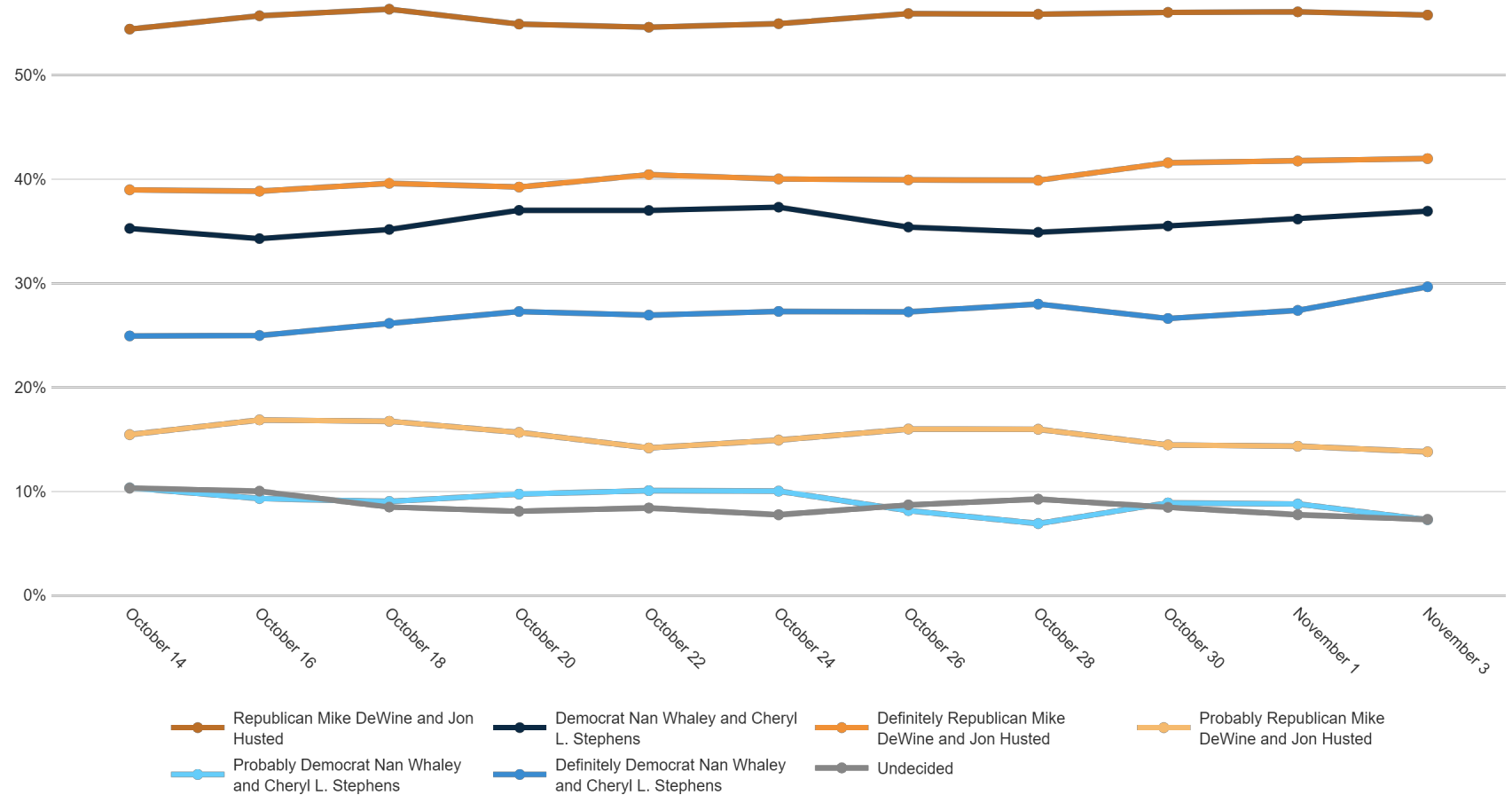
November 3



	F 18 - 34	F 35 - 49	F 50 - 64	F 65+	M 18 - 34	M 35 - 49	M 50 - 64	M 65+	Dayton/ NW OH	Cincinnati	Columbus/C OH	Cleveland/Akron	Republican	Democrat	Unaffiliated	White	Black	Minorities	F College	F No College	M College	M No College	<\$70k	\$70k+	Generic Undec	US Sen Undec	Trump '20	Biden '20	Vote EDay	Vote Mail	Vote in-Person	Already Voted	Usually Votes	Smtms Votes	Rarely Votes	
Republican Mike DeWine and Jon Husted	43%	45%	50%	65%	41%	48%	69%	68%	60%	58%	53%	55%	93%	13%	44%	60%	27%	38%	42%	59%	54%	63%	55%	56%	35%	38%	90%	15%	61%	50%	47%	45%	57%	51%	73%	44%
Democrat Nan Whaley and Cheryl L. Stephens	45%	45%	42%	34%	50%	41%	23%	28%	34%	36%	38%	38%	3%	83%	39%	33%	64%	56%	51%	34%	38%	30%	37%	38%	13%	17%	4%	79%	31%	48%	40%	51%	37%	40%	21%	30%
Definitely Republican Mike DeWine and Jon Husted	29%	28%	34%	51%	29%	38%	55%	55%	45%	43%	40%	42%	75%	8%	26%	46%	22%	19%	30%	42%	46%	47%	40%	44%	19%	19%	72%	8%	45%	32%	32%	37%	45%	34%	45%	23%
Probably Republican Mike DeWine and Jon Husted	14%	17%	16%	14%	13%	10%	14%	13%	15%	15%	13%	13%	18%	5%	18%	15%	5%	19%	12%	17%	8%	15%	15%	12%	16%	19%	18%	7%	15%	18%	16%	8%	12%	16%	27%	21%
Probably Democrat Nan Whaley and Cheryl L. Stephens	15%	6%	8%	3%	15%	7%	4%	5%	7%	5%	7%	8%	2%	14%	9%	6%	15%	5%	7%	8%	7%	7%	8%	7%	10%	10%	2%	13%	8%	12%	7%	4%	6%	10%	7%	11%
Definitely Democrat Nan Whaley and Cheryl L. Stephens	30%	39%	33%	30%	35%	33%	19%	23%	27%	30%	31%	30%	2%	69%	30%	27%	49%	52%	44%	26%	30%	23%	29%	31%	4%	7%	2%	66%	23%	35%	33%	47%	31%	30%	14%	20%
Undecided	12%	10%	9%	1%	9%	11%	8%	4%	6%	6%	9%	7%	3%	4%	17%	6%	10%	6%	7%	7%	8%	7%	7%	6%	51%	45%	6%	6%	9%	2%	13%	4%	6%	9%	6%	26%

If the general election for Governor was held today, and you had to make a choice, who would you vote for?

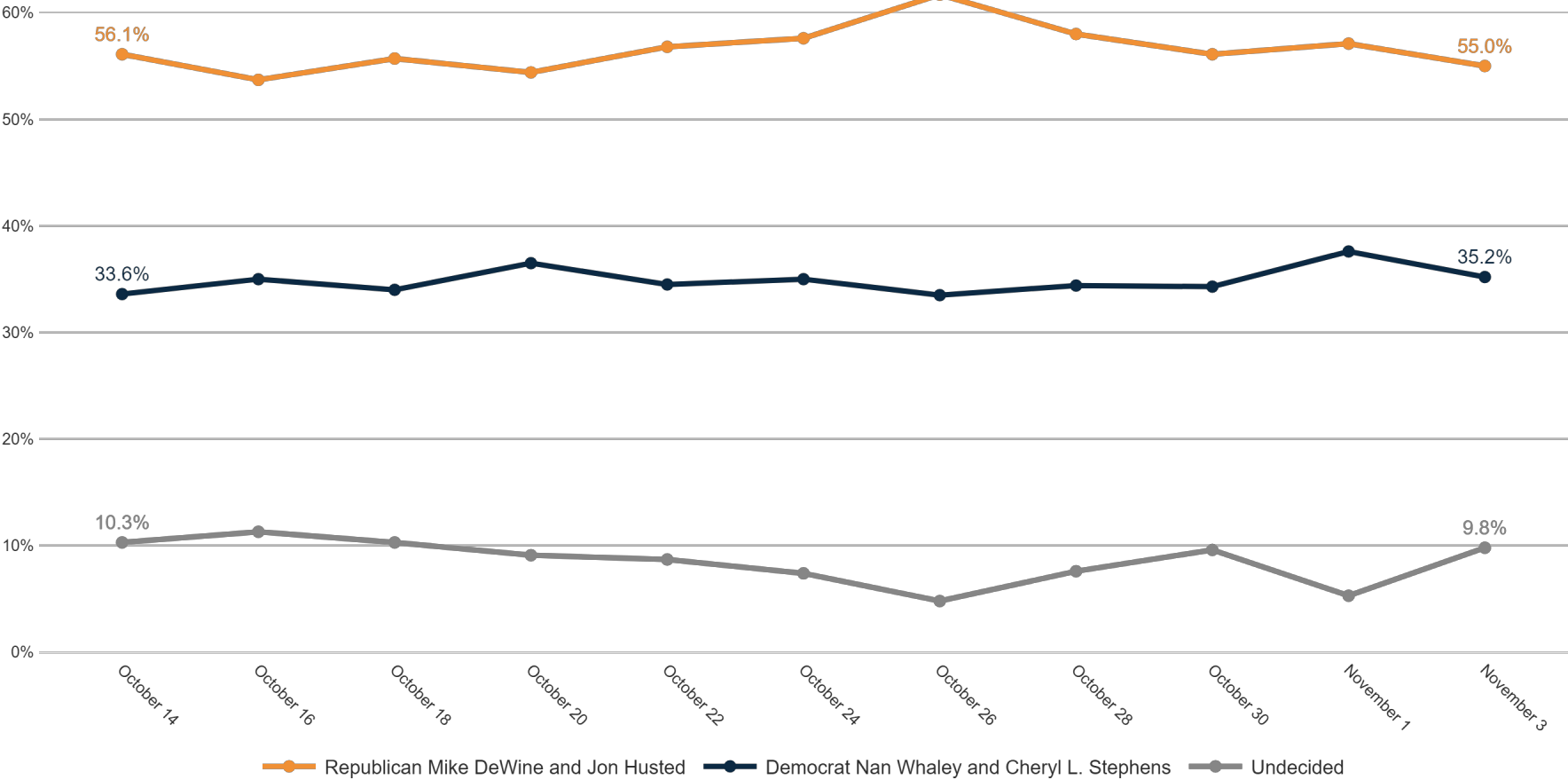
Trend: Governor Ballot



MRP Estimates: Gov Ballot

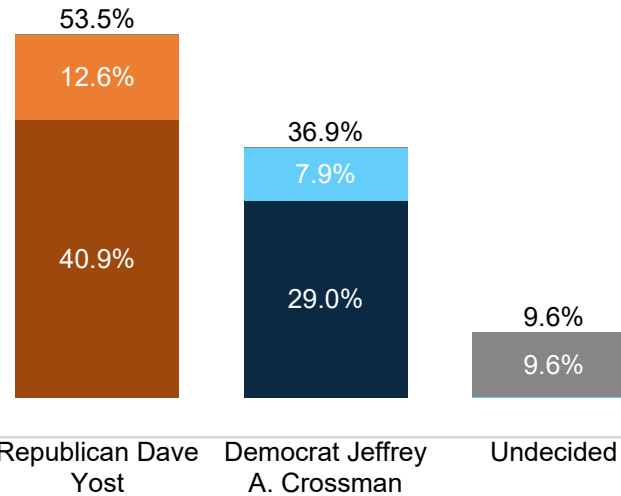
Voter Group

Youngstown



Attorney General Ballot

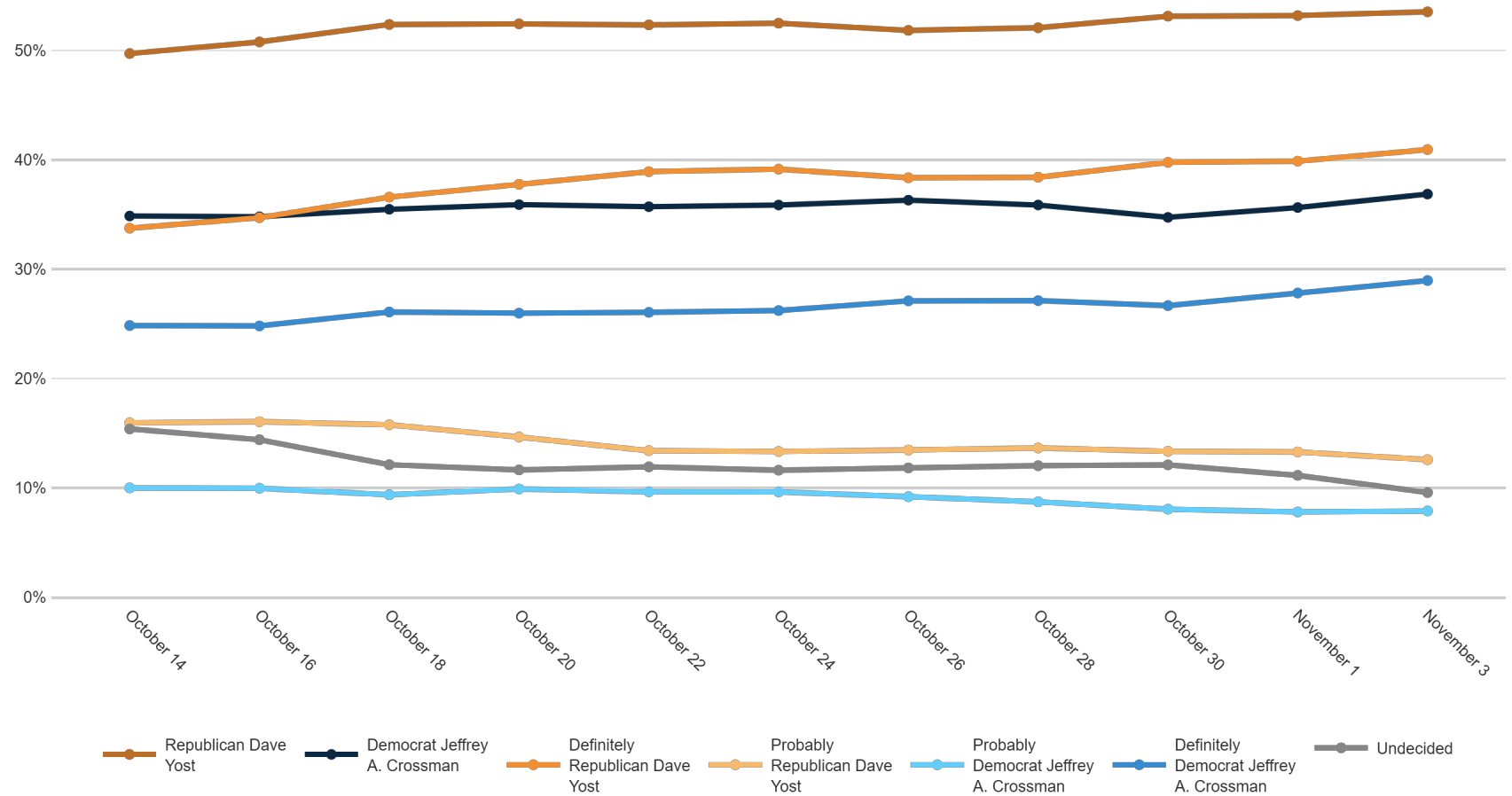
Fielding Date **November 3**



	F 18 - 34				F 35 - 49				F 50 - 64				F 65+				M 18 - 34				M 35 - 49				M 50 - 64				M 65+				Dayton/ NW OH	Cincinnati	Columbus/C OH	Cleveland/Akron	Republican	Democrat	Unaffiliated	White	Black	Minorities	F College	F No College	M College	M No College	<\$70k	\$70k+	Generic Undec	US Sen Undec	Gov Undec	Trump '20	Biden '20	Vote EDay	Vote Mail	Vote In-Person	Always Voted	Usually Votes	Smtms Votes	Rarely Votes
Republican Dave Yost	38%	40%	47%	61%	49%	48%	66%	67%	59%	51%	53%	52%	93%	7%	44%	58%	24%	37%	38%	55%	53%	63%	52%	55%	26%	27%	28%	91%	10%	59%	42%	37%	44%	57%	47%	57%	36%																							
Democrat Jeffrey A. Crossman	39%	47%	42%	35%	38%	40%	29%	31%	33%	37%	37%	38%	3%	85%	35%	34%	60%	55%	51%	33%	40%	29%	36%	39%	2%	7%	11%	3%	81%	31%	40%	60%	51%	38%	39%	25%	25%																							
Definitely Republican Dave Yost	26%	24%	37%	48%	32%	36%	53%	55%	42%	41%	40%	41%	76%	4%	27%	45%	17%	19%	30%	40%	43%	49%	39%	43%	13%	16%	12%	74%	4%	45%	24%	19%	38%	47%	28%	36%	13%																							
Probably Republican Dave Yost	12%	16%	10%	13%	17%	11%	13%	12%	16%	10%	13%	12%	17%	3%	17%	14%	6%	18%	8%	15%	10%	15%	13%	12%	13%	11%	16%	17%	5%	14%	17%	18%	6%	9%	18%	22%	23%																							
Probably Democrat Jeffrey A. Crossman	14%	5%	9%	5%	9%	6%	10%	8%	7%	6%	6%	10%	2%	17%	8%	6%	21%	4%	7%	8%	7%	9%	10%	6%	0%	6%	2%	2%	15%	8%	11%	14%	7%	6%	13%	10%	8%																							
Definitely Democrat Jeffrey A. Crossman	25%	41%	33%	30%	29%	34%	19%	23%	26%	31%	31%	28%	1%	69%	27%	27%	40%	50%	44%	25%	33%	21%	26%	32%	2%	1%	9%	1%	66%	23%	29%	46%	44%	32%	26%	14%	17%																							
Undecided	22%	14%	11%	5%	13%	13%	5%	2%	8%	12%	9%	10%	4%	8%	20%	8%	16%	9%	11%	12%	7%	7%	12%	6%	72%	65%	60%	6%	10%	10%	18%	3%	5%	6%	14%	18%	39%																							

If the general election for Attorney General was held today, and you had to make a choice, who would you vote for?

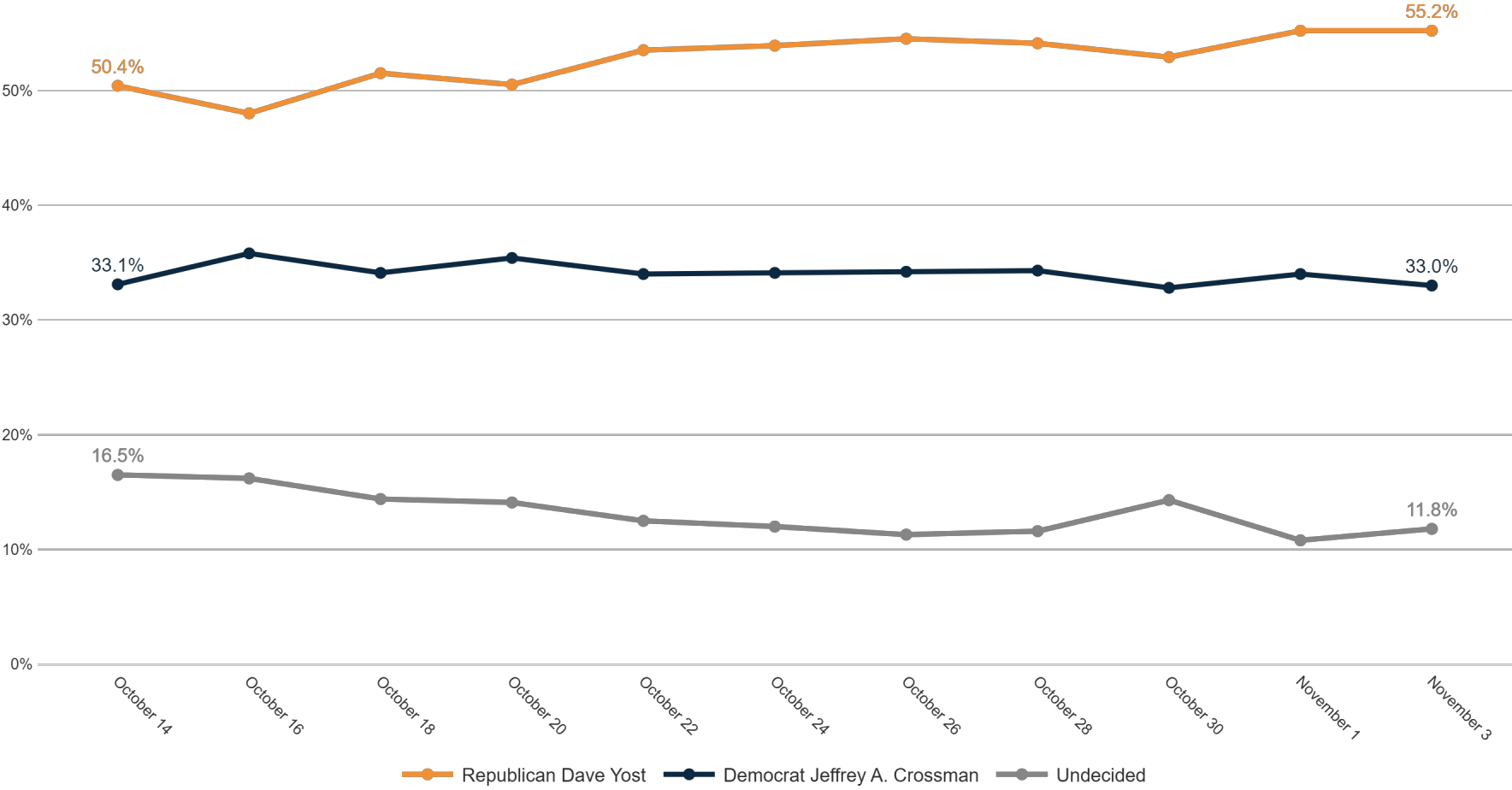
Trend: Attorney General Ballot



MRP Estimates: AG Ballot

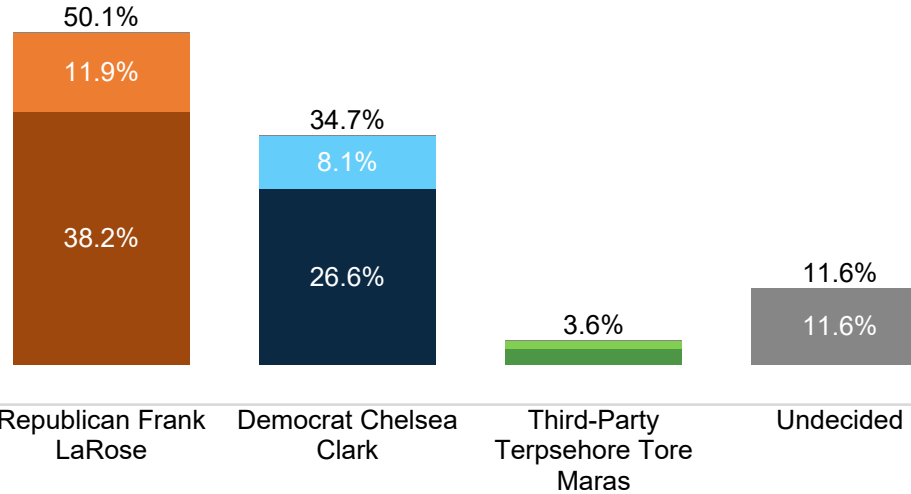
Voter Group

Youngstown



Secretary of State Ballot

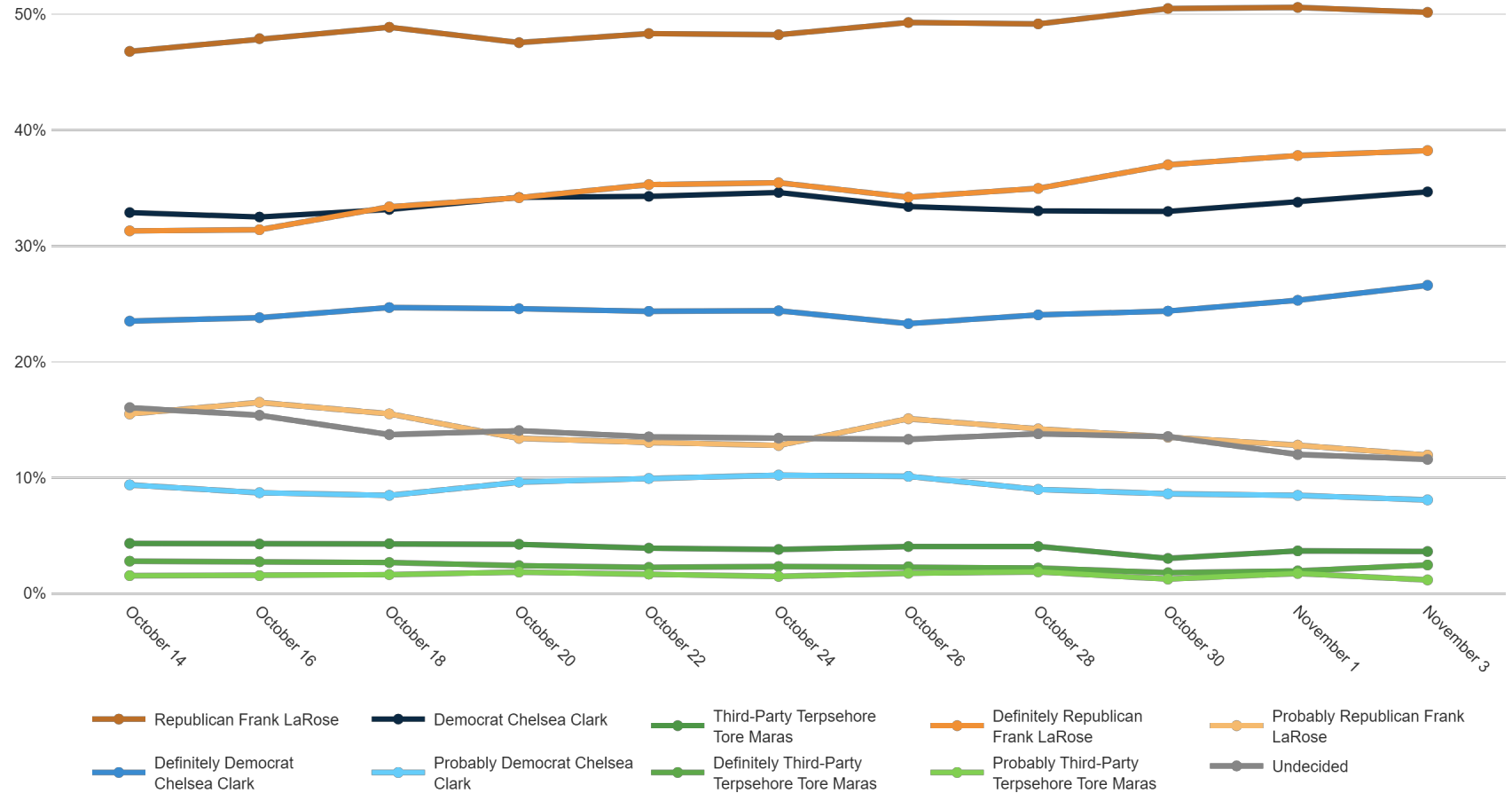
Fielding Date **November 3**



	Age								Region								Race								Income								Issue							
	F 18 - 34	F 35 - 49	F 50 - 64	F 65+	M 18 - 34	M 35 - 49	M 50 - 64	M 65+	Dayton/NW OH	Cincinnati	Columbus/C OH	Cleveland/Akron	Republican	Democrat	Unaffiliated	White	Black	Minorities	F College	F No College	M College	M No College	<\$70k	\$70k+	Generic Undec	US Sen Undec	Gov Undec	Trump '20	Biden '20	Vote EDay	Vote Mail	Vote In-Person	Always Voted	Usually Votes	Smtms Votes	Rarely Votes				
Republican Frank LaRose	33%	36%	43%	59%	36%	44%	66%	66%	55%	49%	47%	50%	90%	7%	35%	55%	20%	30%	35%	52%	50%	59%	49%	51%	20%	20%	19%	87%	9%	54%	41%	30%	43%	54%	42%	55%	28%			
Democrat Chelsea Clark	34%	47%	41%	34%	32%	36%	26%	29%	32%	30%	37%	36%	1%	82%	34%	32%	55%	50%	51%	31%	37%	26%	34%	37%	3%	5%	11%	2%	77%	28%	39%	57%	49%	36%	35%	24%	13%			
Third-Party Terpsehore Tore Maras	7%	3%	2%	1%	11%	4%	2%	3%	3%	6%	3%	4%	3%	3%	6%	3%	7%	15%	2%	4%	4%	4%	3%	3%	3%	5%	6%	3%	4%	4%	0%	2%	3%	3%	4%	2%	10%			
Definitely Republican Frank LaRose	21%	26%	32%	48%	24%	30%	57%	50%	43%	39%	36%	37%	72%	4%	23%	42%	17%	16%	28%	38%	42%	44%	35%	41%	14%	12%	7%	69%	5%	40%	27%	21%	37%	43%	28%	32%	17%			
Probably Republican Frank LaRose	12%	10%	11%	12%	12%	14%	9%	15%	12%	10%	11%	13%	18%	3%	12%	13%	3%	15%	7%	14%	8%	15%	13%	10%	7%	9%	11%	18%	4%	14%	14%	8%	6%	10%	14%	24%	11%			
Definitely Democrat Chelsea Clark	23%	39%	32%	29%	20%	27%	21%	20%	25%	25%	30%	26%	1%	66%	22%	25%	42%	35%	43%	23%	27%	18%	25%	30%	1%	1%	1%	1%	61%	20%	30%	39%	42%	30%	23%	15%	6%			
Probably Democrat Chelsea Clark	11%	7%	9%	5%	13%	9%	5%	9%	7%	6%	7%	10%	0%	16%	12%	7%	13%	14%	8%	8%	10%	8%	9%	7%	2%	4%	10%	1%	17%	8%	9%	18%	7%	7%	12%	9%	7%			
Definitely Third-Party Terpsehore Tore Maras	5%	3%	1%	1%	11%	2%	2%	1%	1%	4%	2%	3%	2%	3%	4%	2%	6%	7%	1%	3%	2%	3%	3%	2%	3%	2%	4%	2%	2%	3%	0%	2%	2%	2%	4%	1%	10%			
Probably Third-Party Terpsehore Tore Maras	3%	0%	1%	1%	0%	2%	1%	2%	2%	2%	1%	1%	1%	1%	2%	1%	2%	7%	1%	1%	2%	1%	1%	2%	0%	2%	2%	1%	1%	2%	0%	0%	0%	2%	0%	2%	0%			
Undecided	25%	14%	14%	5%	21%	16%	6%	3%	10%	15%	12%	10%	6%	8%	25%	10%	18%	5%	13%	13%	9%	11%	14%	9%	74%	70%	64%	9%	10%	13%	20%	11%	5%	7%	18%	18%	49%			

If the general election for Secretary of State was held today, and you had to make a choice, who would you vote for?

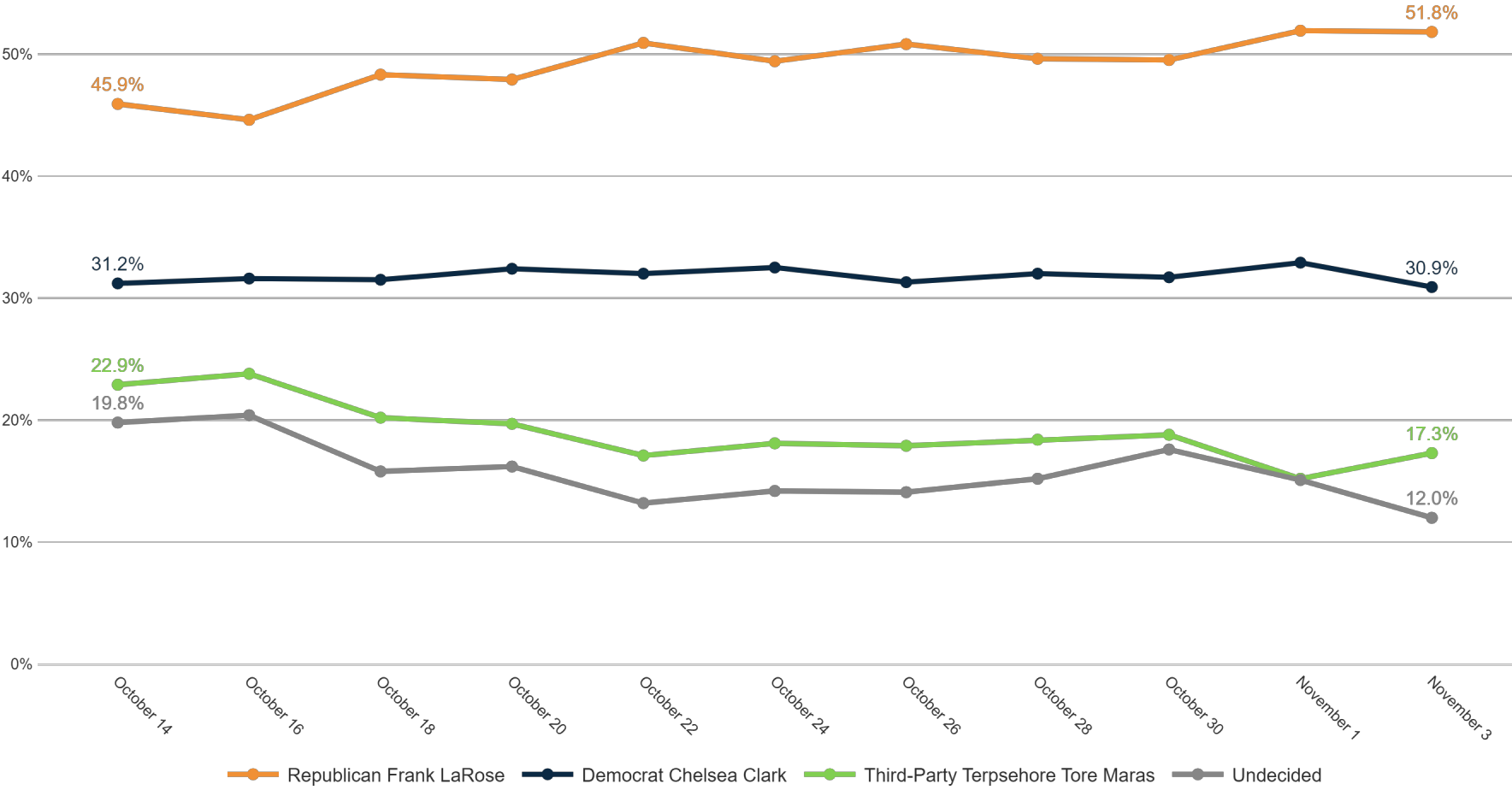
Trend: Secretary of State Ballot



MRP Estimates: SoS Ballot

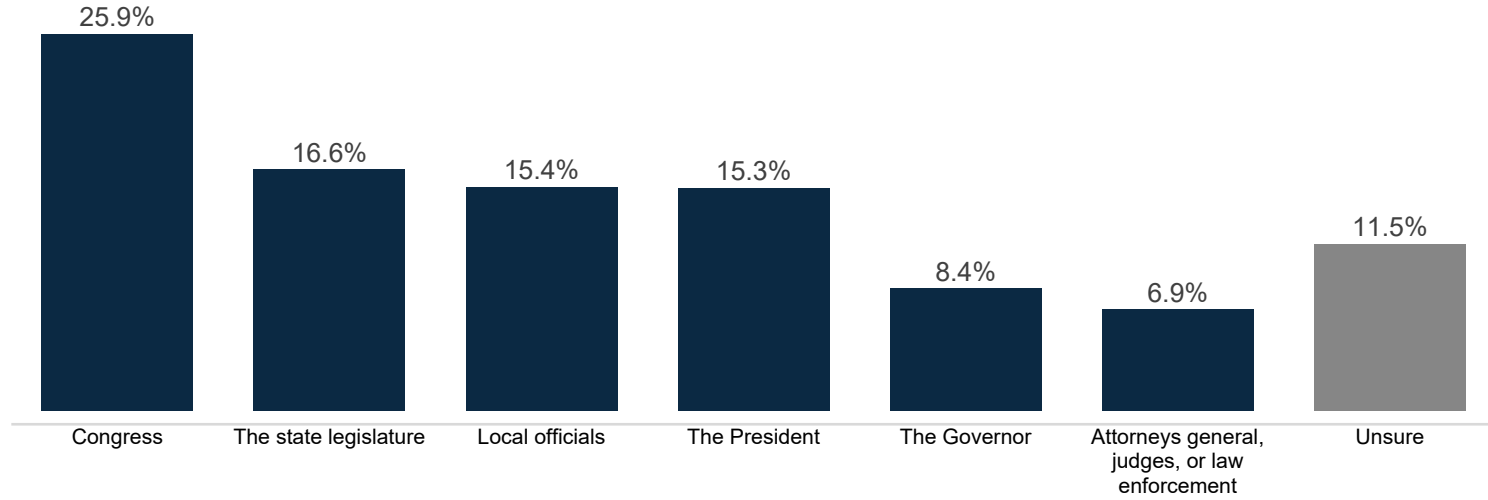
Voter Group

Youngstown



Level of Government

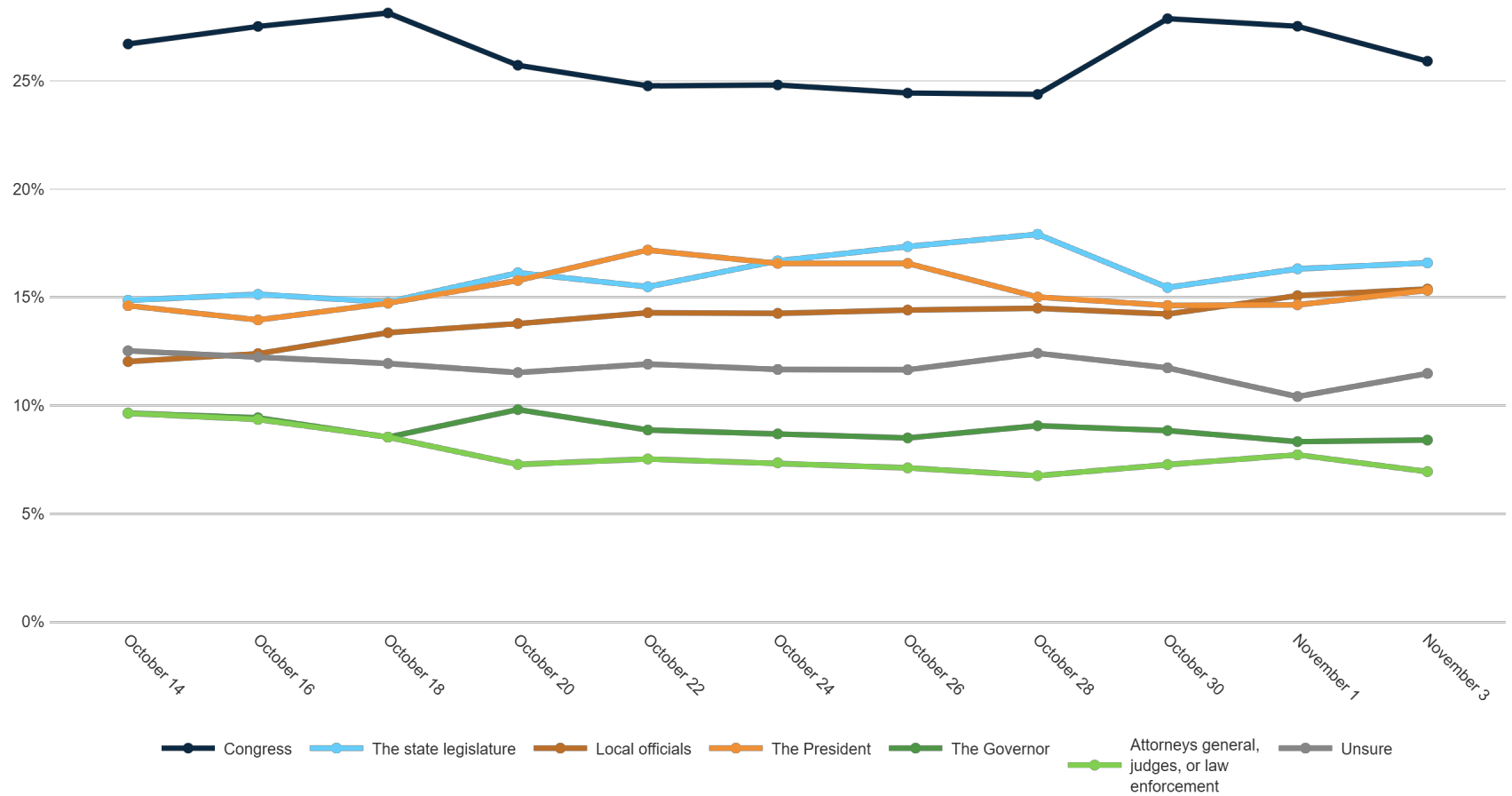
Fielding Date **November 3**



	F 18 - 34				F 35 - 49				F 50 - 64				F 65+				M 18 - 34				M 35 - 49				M 50 - 64				M 65+				Dayton/ NW OH	Cincinnati	Columbus/C OH	Cleveland/Akron	Republican	Democrat	Unaffiliated	White	Black	Minorities	F College	F No College	M College	M No College	<\$70k	\$70k+	Generic Undec	US Sen Undec	Gov Undec	Trump '20	Biden '20	Vote EDay	Vote Mail	Vote In-Person	Always Voted	Usually Voted	Smtms Votes	Rarely Votes
Congress	25%	20%	24%	22%	26%	26%	32%	32%	28%	23%	28%	24%	27%	24%	27%	27%	18%	16%	23%	22%	25%	33%	27%	26%	18%	16%	26%	27%	26%	26%	17%	19%	31%	26%	28%	20%	17%																							
The state legislature	18%	22%	17%	14%	16%	25%	14%	11%	16%	17%	18%	15%	12%	23%	17%	17%	12%	19%	21%	14%	24%	11%	14%	21%	11%	14%	12%	12%	23%	17%	14%	25%	14%	18%	14%	17%	17%																							
Local officials	15%	15%	14%	14%	21%	17%	19%	12%	17%	17%	14%	15%	16%	13%	19%	14%	24%	41%	14%	15%	19%	15%	14%	17%	22%	14%	21%	15%	15%	15%	21%	16%	16%	16%	15%	8%	5%																							
The President	14%	6%	13%	19%	19%	12%	17%	19%	15%	11%	15%	17%	21%	11%	11%	15%	21%	7%	12%	16%	14%	19%	16%	14%	13%	16%	10%	22%	8%	16%	15%	7%	14%	17%	12%	19%	10%																							
The Governor	10%	11%	13%	4%	6%	8%	7%	9%	9%	5%	9%	9%	8%	8%	9%	9%	9%	6%	8%	10%	8%	7%	9%	9%	5%	16%	6%	8%	9%	9%	13%	12%	4%	7%	10%	14%	11%																							
Attorneys general, judges, or law enforcement	7%	9%	6%	12%	4%	4%	5%	6%	4%	11%	7%	7%	6%	9%	6%	7%	7%	3%	10%	8%	4%	5%	8%	5%	2%	1%	2%	6%	8%	6%	10%	9%	8%	7%	6%	7%	7%																							
Unsure	12%	16%	12%	16%	8%	8%	6%	11%	11%	15%	10%	12%	10%	12%	11%	11%	9%	8%	11%	16%	6%	10%	12%	9%	29%	22%	23%	10%	11%	11%	11%	11%	12%	9%	15%	15%	34%																							

What level of government do you believe has the most impact on your day-to-day life?

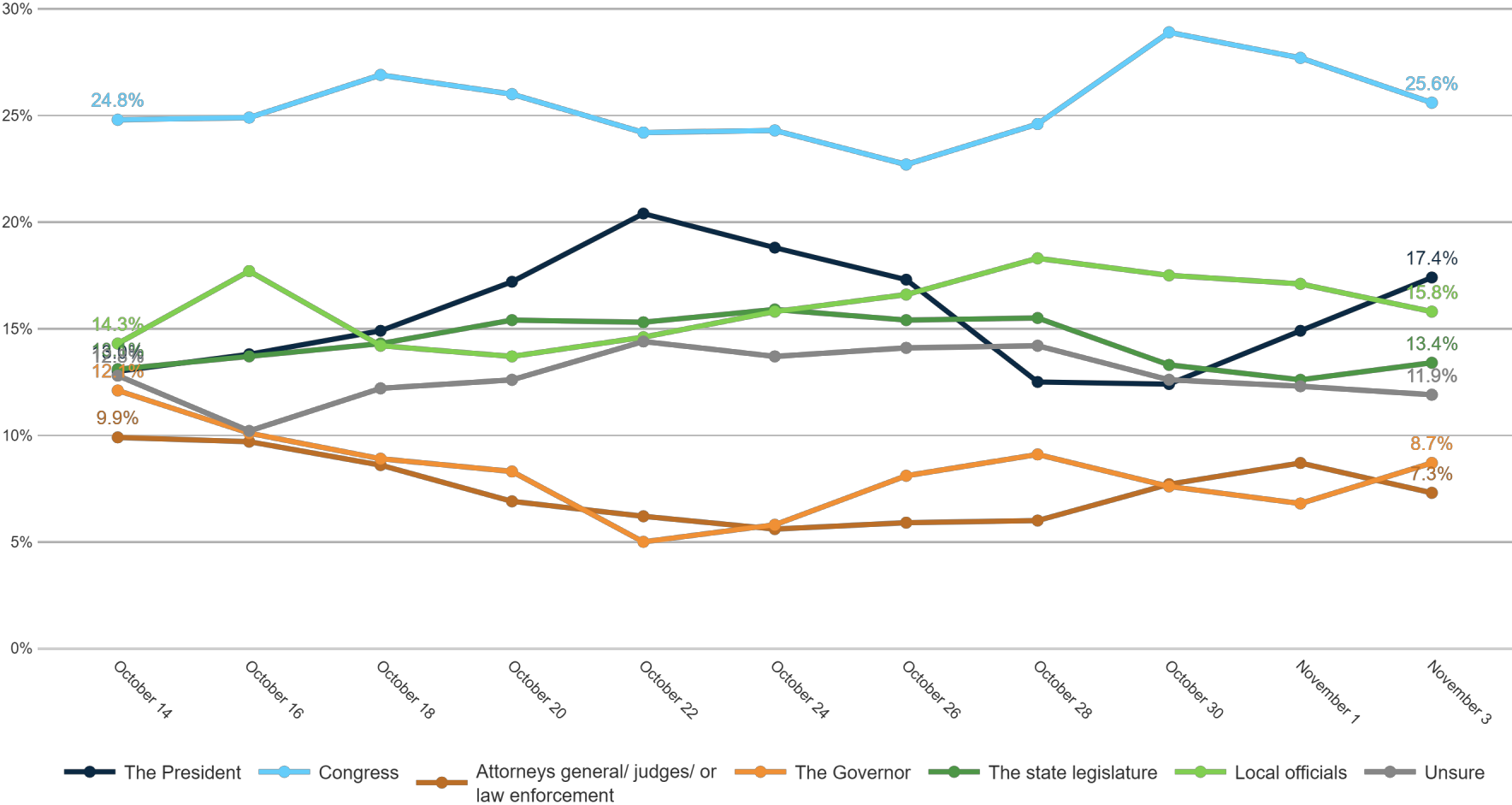
Trend: Level of Government



MRP Estimates: Level of Government

Voter Group

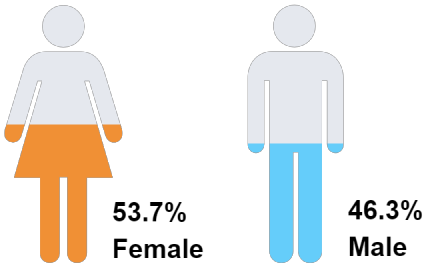
Youngstown



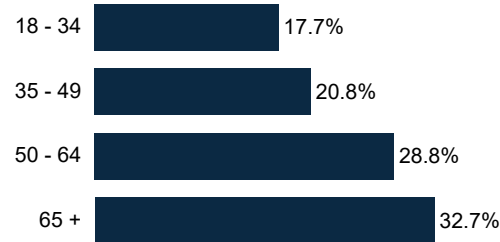
Demographics

Fielding Date **November 3**

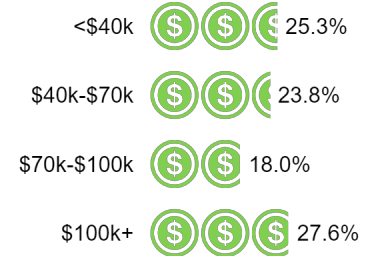
Sex



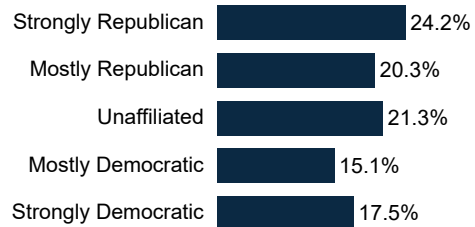
Age Range



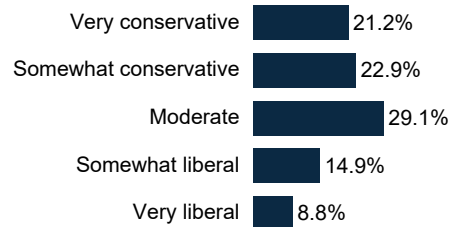
Household Income



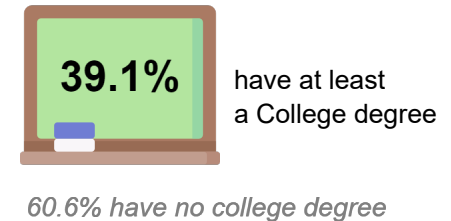
Partisanship



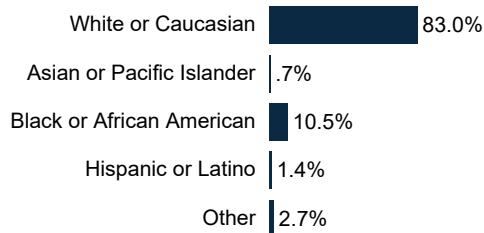
Ideology



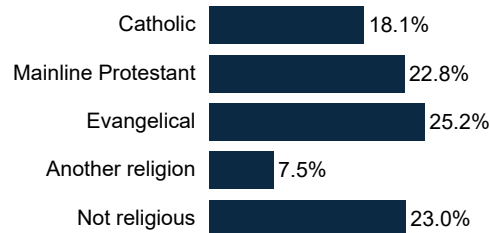
Education



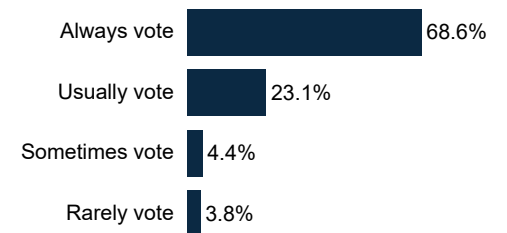
Race/ Ethnicity



Religion



Voter History



Total sample size: 1498