

CYGNAL

Survey of Likely General Election Voters

Ohio Statewide

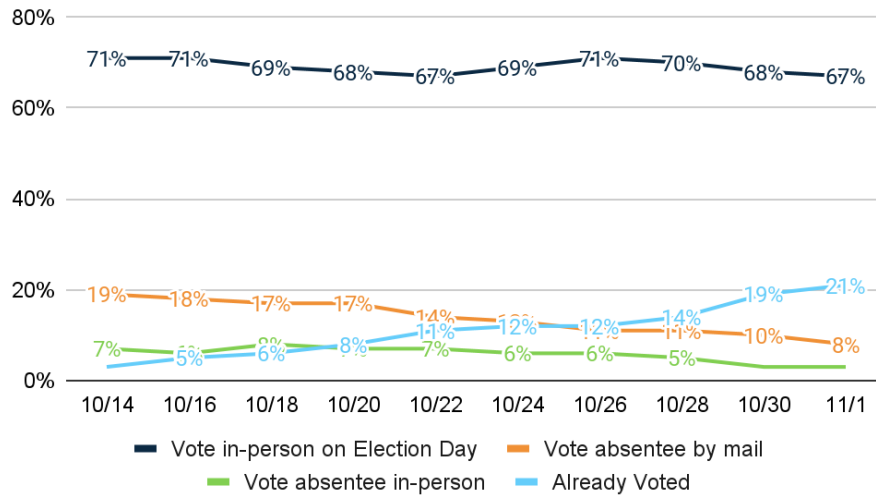
Conducted October 29 – November 1, 2022

n=1520 | $\pm 2.51\%$



Vote Method

1. How do you plan to vote in the November general election for U.S. Senate, Governor, and state legislature?



	Freq.	%	10/29/22	10/27/22
<u>Vote in-person on Election Day</u>	1017	66.9%	68.4%	70.0%
Definitely vote in-person on Election Day	829	54.6%	55.2%	57.0%
Probably vote in-person on Election Day	187	12.3%	13.2%	13.0%
<u>Vote absentee by mail</u>	127	8.4%	9.7%	11.0%
Definitely vote absentee by mail	98	6.5%	7.8%	8.0%
Probably vote absentee by mail	29	1.9%	1.9%	2.0%
<u>Vote absentee in-person</u>	50	3.3%	3.2%	5.0%
Definitely vote absentee in-person	35	2.3%	2.1%	3.0%
Probably vote absentee in-person	16	1.0%	1.2%	2.0%
<u>Already Voted</u>	326	21.5%	18.7%	14.0%
Already voted by mail	187	12.3%	10.2%	8.0%
Already voted early in person	139	9.2%	8.4%	6.0%
Total	1520	100.0%	100.0%	100.0%

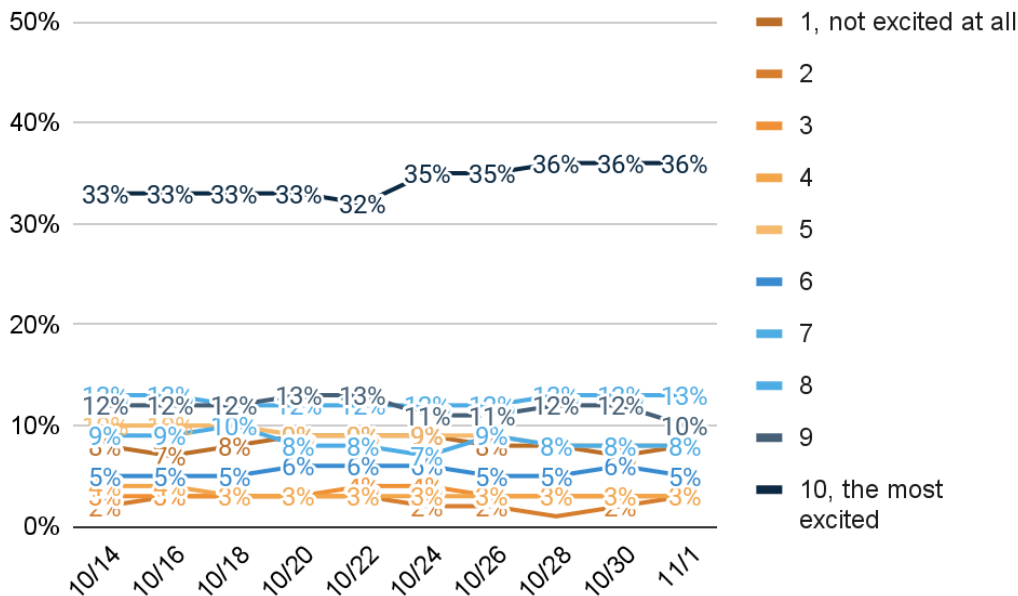
Enthusiasm

2. How excited are you to vote in the November general election for Governor, Congress, and state legislature on a scale of 1 to 10, with 1 being not excited at all and 10 being very excited?

	Freq.	%	10/29/22	10/27/22
1, not excited at all	125	8.2%	7.3%	7.8%
2	39	2.5%	2.3%	1.4%
3	52	3.4%	2.9%	3.1%
4	40	2.6%	2.9%	3.3%
5	126	8.3%	7.9%	8.5%
6	83	5.4%	5.7%	5.2%
7	126	8.3%	7.9%	8.1%

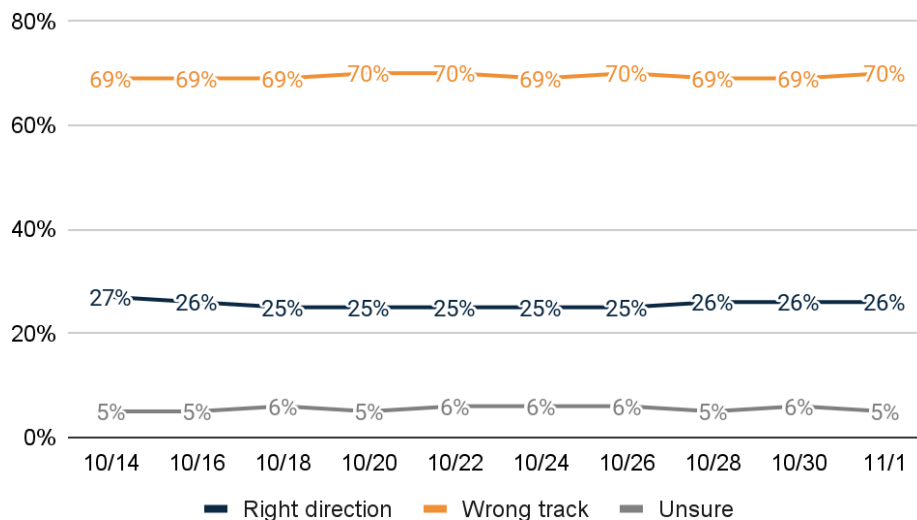


8	191	12.6%	13.2%	12.9%
9	158	10.4%	11.8%	11.8%
10, the most excited	550	36.2%	36.4%	36.2%
Unsure	31	2.0%	1.7%	1.7%
Total	1520	100.0%	100.0%	100.0%



US RD/WT

3. Generally speaking, would you say things in the United States are headed in the right direction or off on the wrong track?



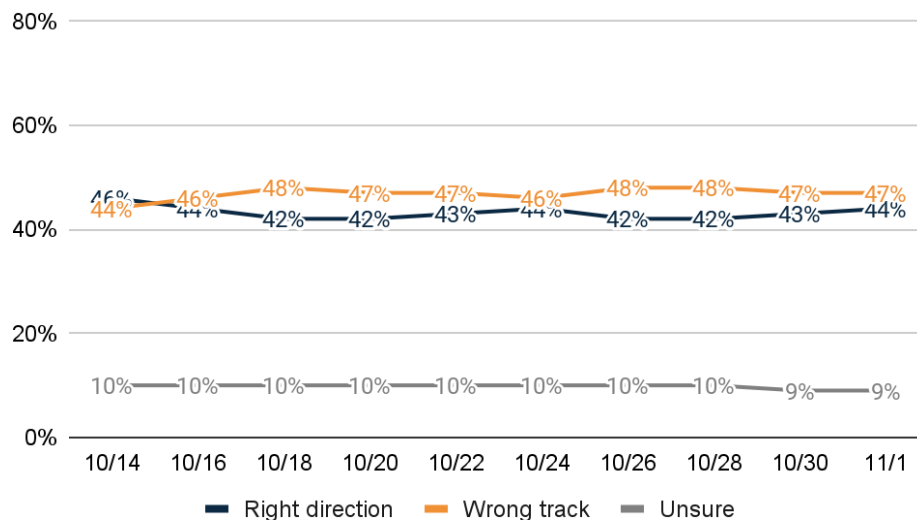
	Freq.	%	10/29/22	10/27/22
Right direction	390	25.6%	25.6%	25.5%
Definitely the right direction	101	6.6%	7.2%	7.1%
Mostly the right direction	289	19.0%	18.4%	18.5%
Wrong track	1057	69.5%	68.6%	69.1%
Mostly the wrong track	313	20.6%	19.2%	20.0%



Definitely the wrong track	743	48.9%	49.4%	49.1%
Unsure	74	4.9%	5.8%	5.4%
Total	1520	100.0%	100.0%	100.0%

Ohio RD/WT

4. Generally speaking, would you say things in Ohio are headed in the right direction or off on the wrong track?



	Freq.	%	10/29/22	10/27/22
Right direction	673	44.3%	43.4%	42.1%
Definitely the right direction	111	7.3%	8.1%	7.0%
Mostly the right direction	563	37.0%	35.4%	35.1%
Wrong track	708	46.6%	47.5%	47.9%
Mostly the wrong track	403	26.5%	26.7%	28.1%
Definitely the wrong track	305	20.0%	20.8%	19.9%
Unsure	139	9.1%	9.1%	10.0%
Total	1520	100.0%	100.0%	100.0%

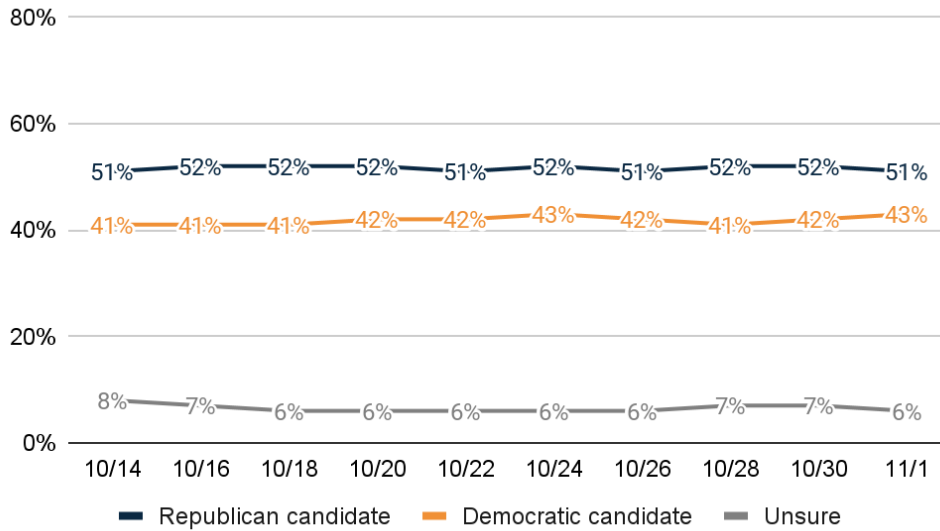
Generic Ballot

5. If the election was held today, and you had to make a choice, would you vote for the Republican or Democratic candidate for Congress?

	Freq.	%	10/29/22	10/27/22
Republican candidate	778	51.2%	51.7%	52.1%
Definitely the Republican candidate	647	42.6%	43.0%	42.2%
Probably the Republican candidate	131	8.6%	8.7%	9.8%
Democratic candidate	648	42.7%	41.7%	41.0%
Probably the Democratic candidate	139	9.2%	8.9%	8.1%
Definitely the Democratic candidate	509	33.5%	32.7%	33.0%

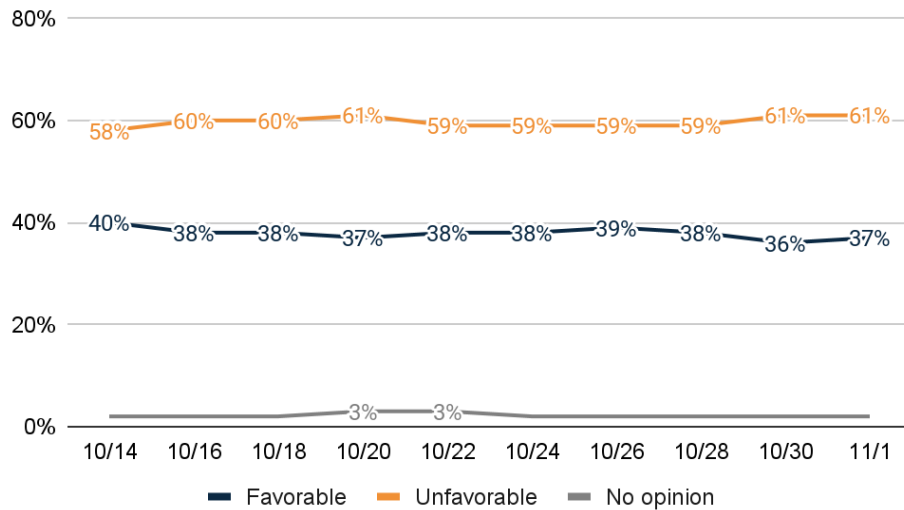


Unsure	93	6.1%	6.6%	6.9%
Total	1520	100.0%	100.0%	100.0%



Biden Image

6. Do you have a favorable or unfavorable opinion of Joe Biden?

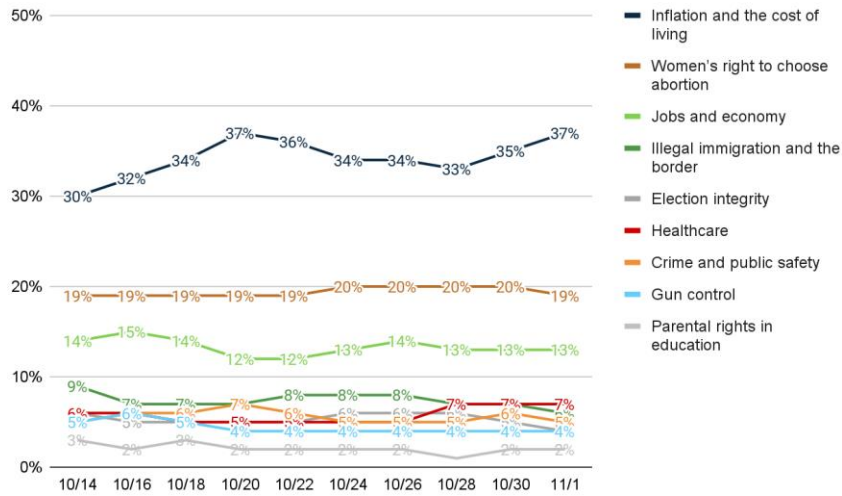


	Freq.	%	10/29/22	10/27/22
Favorable	567	37.3%	36.3%	38.4%
Very favorable	268	17.6%	16.9%	17.7%
Somewhat favorable	299	19.7%	19.4%	20.7%
Unfavorable	929	61.1%	61.4%	59.3%
Somewhat unfavorable	154	10.2%	10.1%	8.4%
Very unfavorable	775	51.0%	51.3%	50.9%
No opinion	24	1.6%	2.3%	2.3%
Total	1520	100.0%	100.0%	100.0%



Top Priority

7. From the following list, which issue is personally most important to you that would decide your vote for government?



	Freq.	%	10/29/22	10/27/22
Inflation and the cost of living	565	37.2%	34.7%	33.1%
Women's right to choose abortion	291	19.2%	19.7%	20.0%
Jobs and economy	200	13.2%	13.0%	13.0%
Illegal immigration and the border	96	6.3%	6.6%	6.6%
Election integrity	67	4.4%	4.5%	6.4%
Healthcare	100	6.6%	7.0%	6.6%
Crime and public safety	80	5.3%	5.8%	5.3%
Gun control	65	4.3%	4.1%	3.9%
Parental rights in education	25	1.7%	1.6%	1.5%
Don't know	31	2.1%	3.0%	3.7%
Total	1520	100.0%	100.0%	100.0%

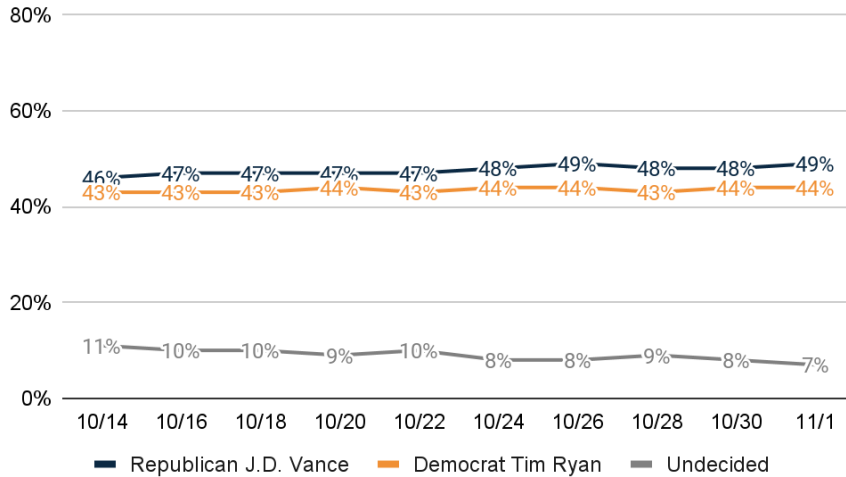
Thinking about the upcoming general elections in November...

US Sen Ballot

8. If the general election for U.S. Senate was held today, and you had to make a choice, who would you vote for?

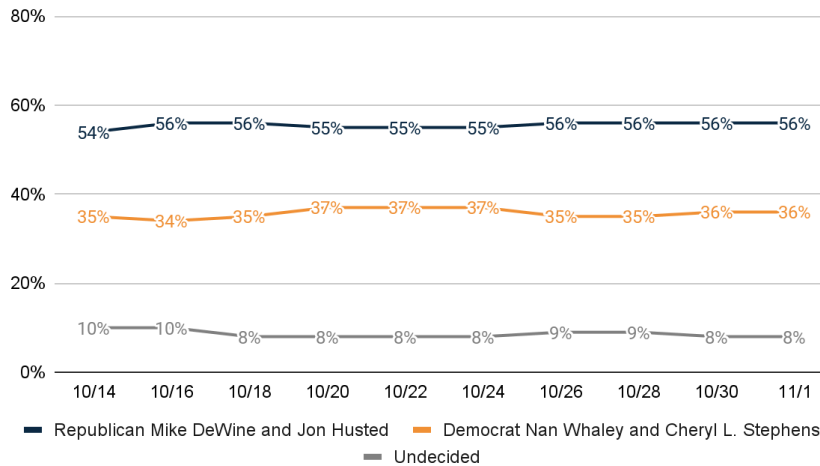
	Freq.	%	10/29/22	10/27/22
Republican J.D. Vance	740	48.7%	48.2%	47.7%
Definitely Republican J.D. Vance	564	37.1%	37.1%	35.8%
Probably Republican J.D. Vance	176	11.6%	11.1%	11.9%
Democrat Tim Ryan	670	44.1%	43.7%	43.1%
Probably Democrat Tim Ryan	102	6.7%	8.1%	7.6%
Definitely Democrat Tim Ryan	568	37.4%	35.6%	35.5%
Undecided	109	7.2%	8.1%	9.2%
Total	1520	100.0%	100.0%	100.0%





Gov Ballot

9. If the general election for Governor was held today, and you had to make a choice, who would you vote for?

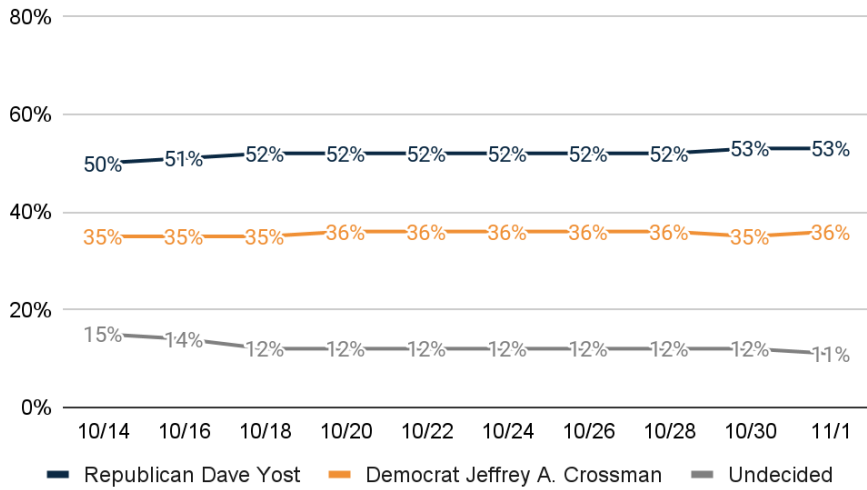


	Freq.	%	10/29/22	10/27/22
Republican Mike DeWine and Jon Husted	852	56.1%	56.0%	55.9%
Definitely Republican Mike DeWine and Jon Husted	635	41.7%	41.6%	39.9%
Probably Republican Mike DeWine and Jon Husted	218	14.3%	14.5%	16.0%
Democrat Nan Whaley and Cheryl L. Stephens	550	36.2%	35.5%	34.9%
Probably Democrat Nan Whaley and Cheryl L. Stephens	133	8.8%	8.9%	6.9%
Definitely Democrat Nan Whaley and Cheryl L. Stephens	416	27.4%	26.6%	28.0%
Undecided	118	7.8%	8.5%	9.2%
Total	1520	100.0%	100.0%	100.0%



AG Ballot

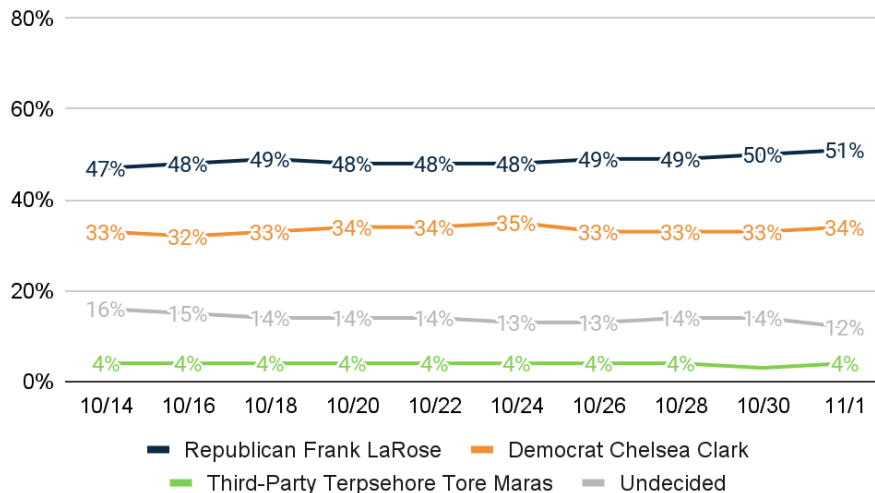
10. If the general election for Attorney General was held today, and you had to make a choice, who would you vote for?



	Freq.	%	10/29/22	10/27/22
Republican Dave Yost	809	53.2%	53.1%	52.1%
Definitely Republican Dave Yost	606	39.9%	39.8%	38.4%
Probably Republican Dave Yost	202	13.3%	13.4%	13.7%
Democrat Jeffrey A. Crossman	542	35.6%	34.7%	35.9%
Probably Democrat Jeffrey A. Crossman	119	7.8%	8.1%	8.7%
Definitely Democrat Jeffrey A. Crossman	423	27.8%	26.7%	27.1%
Undecided	170	11.2%	12.1%	12.0%
Total	1520	100.0%	100.0%	100.0%

SoS Ballot

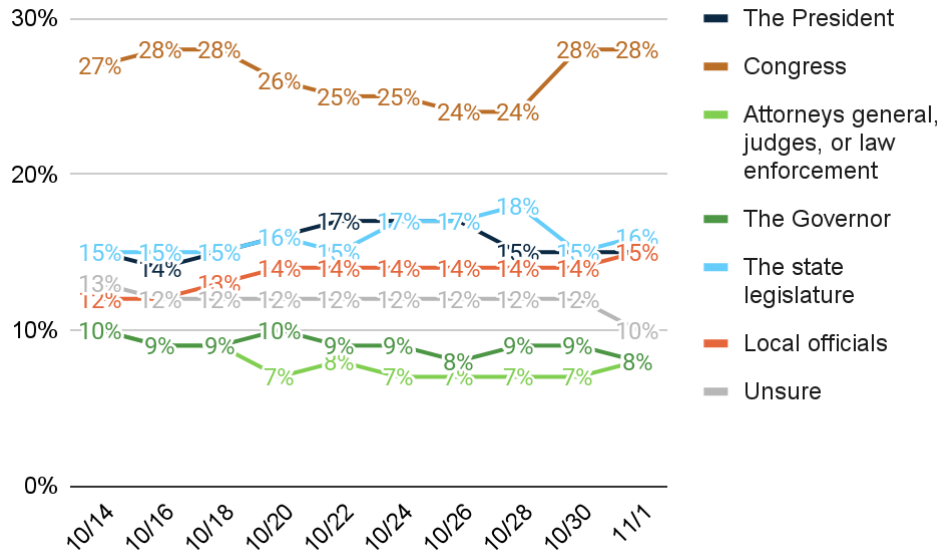
11. If the general election for Secretary of State was held today, and you had to make a choice, who would you vote for?



	Freq.	%	10/29/22	10/27/22
<u>Republican Frank LaRose</u>	769	50.6%	50.5%	49.2%
Definitely Republican Frank LaRose	574	37.8%	37.0%	35.0%
Probably Republican Frank LaRose	194	12.8%	13.5%	14.2%
<u>Democrat Chelsea Clark</u>	513	33.8%	33.0%	33.0%
Definitely Democrat Chelsea Clark	385	25.3%	24.4%	24.0%
Probably Democrat Chelsea Clark	129	8.5%	8.6%	9.0%
<u>Third-Party Terpsehore Tore Maras</u>	56	3.7%	3.0%	4.1%
Definitely Third-Party Terpsehore Tore Maras	30	1.9%	1.8%	2.2%
Probably Third-Party Terpsehore Tore Maras	26	1.7%	1.2%	1.9%
Undecided	182	12.0%	13.5%	13.8%
Total	1520	100.0%	100.0%	100.0%

Level of Govt

12. What level of government do you believe has the most impact on your day-to-day life?



	Freq.	%	10/29/22	10/27/22
The President	223	14.6%	14.6%	15.0%
Congress	418	27.5%	27.9%	24.4%
Attorneys general, judges, or law enforcement	117	7.7%	7.3%	6.8%
The Governor	127	8.3%	8.8%	9.1%
The state legislature	248	16.3%	15.4%	17.9%
Local officials	229	15.1%	14.2%	14.5%
Unsure	158	10.4%	11.7%	12.4%
Total	1520	100.0%	100.0%	100.0%



13. Are you female or male?

	Freq.	%
Female	816	53.7%
Male	704	46.3%
Total	1520	100.0%

14. What age range do you fall within?

	Freq.	%
<u>Under 50</u>	<u>585</u>	<u>38.5%</u>
18 - 34	269	17.7%
35 - 49	316	20.8%
<u>50 and Over</u>	<u>935</u>	<u>61.5%</u>
50 - 64	438	28.8%
65 or older	497	32.7%
Total	1520	100.0%

15. Generally speaking, do you think of yourself as a Democrat, Republican, or Unaffiliated?

	Freq.	%
<u>Republican</u>	<u>676</u>	<u>44.5%</u>
Strongly Republican	379	25.0%
Mostly Republican	297	19.5%
<u>Unaffiliated</u>	<u>328</u>	<u>21.6%</u>
<u>Democratic</u>	<u>496</u>	<u>32.6%</u>
Mostly Democratic	230	15.1%
Strongly Democratic	265	17.5%
Unsure	20	1.3%
Total	1520	100.0%

16. And thinking about your views toward politics and government, would you say you are...

	Freq.	%
<u>Conservative</u>	<u>670</u>	<u>44.1%</u>
Very conservative	322	21.2%
Somewhat conservative	348	22.9%
<u>Moderate</u>	<u>442</u>	<u>29.1%</u>
<u>Liberal</u>	<u>360</u>	<u>23.7%</u>
Somewhat liberal	226	14.9%
Very liberal	134	8.8%
Unsure	47	3.1%
Total	1520	100.0%



17. Do you consider the area where you live to be more rural, suburban, or urban?

	Freq.	%
Rural	498	32.8%
Suburban	763	50.2%
Urban	259	17.0%
Total	1520	100.0%

18. If you have one, what is your religious affiliation?

	Freq.	%
Catholic	275	18.1%
Mainline Protestant (Methodist, Lutheran, Episcopal, Anglican, etc.)	347	22.8%
Evangelical or Born-Again Protestant (Non-denominational Evangelical, Pentecostal, Church of God, etc.)	383	25.2%
Another religion	140	9.2%
Not religious	338	22.2%
Unsure	37	2.5%
Total	1520	100.0%

19. Which of the following best describes your race or ethnicity?

	Freq.	%
White or Caucasian	1262	83.0%
Asian or Pacific Islander	10	0.7%
Black or African American	160	10.5%
Hispanic or Latino	24	1.6%
Other	49	3.2%
Unsure	16	1.1%
Total	1520	100.0%

20. How often do you vote in general elections held in November of each even year?

	Freq.	%
Every general election including for president and in midterms	1071	70.5%
Most general elections, including for president and in some midterms	316	20.8%
Every general election for president but not midterms	66	4.3%
Most general elections for president	67	4.4%
Total	1520	100.0%

21. What annual household income range do you fall within out of the following options?

	Freq.	%
Less than \$40,000	376	24.7%
\$40,000 - \$69,999	374	24.6%
\$70,000 - \$99,999	276	18.1%
\$100,000 or more	413	27.2%
Unsure	82	5.4%
Total	1520	100.0%



22. Thinking back, who did you vote for in the 2020 election for President?

	Freq.	%
Republican Donald Trump	765	50.3%
Democrat Joe Biden	635	41.8%
Another candidate	59	3.9%
Did not vote	45	3.0%
Unsure	15	1.0%
Total	1520	100.0%

23. What's the highest level of education you have completed?

	Freq.	%
<u>No degree</u>	<u>919</u>	<u>60.5%</u>
Some high school	33	2.2%
High school diploma/GED	299	19.7%
Technical Certification	76	5.0%
Some college or Associate's Degree	510	33.6%
<u>At least College</u>	<u>594</u>	<u>39.1%</u>
Four-year undergraduate or Bachelor's Degree	368	24.2%
Graduate degree or further	226	14.9%
Unsure	7	0.4%
Total	1520	100.0%

24. Geo – DMA

	Freq.	%
<u>Dayton / NW OH</u>	<u>335</u>	<u>22.1%</u>
Dayton	165	10.8%
Ft. Wayne	10	0.7%
Lima	31	2.0%
Toledo	130	8.5%
<u>Cincinnati</u>	<u>216</u>	<u>14.2%</u>
<u>Columbus / Central OH</u>	<u>402</u>	<u>26.4%</u>
Charleston-Huntington	23	1.5%
Wheeling-Steubenville	30	2.0%
Columbus OH	332	21.8%
Parkersburg	7	0.5%
Zanesville	10	0.7%
<u>Cleveland / Akron</u>	<u>567</u>	<u>37.3%</u>
Cleveland-Akron (Canton)	478	31.5%
Youngstown	89	5.8%
Total	1520	100.0%



25. Age + Income

	Freq.	%
<65 <\$40k	216	14.2%
<65 \$40k-\$69k	235	15.5%
<65 \$70k-\$99k	192	12.6%
<65 \$100k+	328	21.6%
65+ <\$40k	160	10.5%
65+ \$40k-\$69k	139	9.1%
65+ \$70k-\$99k	84	5.5%
65+ \$100k+	85	5.6%
Unsure	82	5.4%
Total	1520	100.0%

26. Gender + Age

	Freq.	%
F 18 - 34	144	9.5%
F 35 - 49	154	10.1%
F 50 - 64	231	15.2%
F 65+	287	18.9%
M 18 - 34	125	8.2%
M 35 - 49	163	10.7%
M 50 - 64	207	13.6%
M 65+	210	13.8%
Total	1520	100.0%

27. Race + Gender

	Freq.	%
White Female	666	43.8%
White Male	596	39.2%
Asian Female	4	0.2%
Asian Male	6	0.4%
Black Female	100	6.6%
Black Male	60	3.9%
Hispanic Female	12	0.8%
Hispanic Male	12	0.8%
Other Female	25	1.6%
Other Male	24	1.6%
Unsure	16	1.1%
Total	1520	100.0%

28. Gender + Education

	Freq.	%
Female At least College	287	18.9%
Female No degree	527	34.6%
Male At least College	307	20.2%
Male No degree	393	25.8%



Unsure	7	0.4%
Total	1520	100.0%

29. Partisanship + Age

	Freq.	%
Republican 18-34	86	5.7%
Republican 35-49	107	7.0%
Republican 50-64	205	13.5%
Republican 65+	279	18.3%
Unaffiliated 18-34	71	4.7%
Unaffiliated 35-49	92	6.1%
Unaffiliated 50-64	93	6.1%
Unaffiliated 65+	71	4.7%
Democratic 18-34	110	7.2%
Democratic 35-49	108	7.1%
Democratic 50-64	134	8.8%
Democratic 65+	143	9.4%
Unsure	20	1.3%
Total	1520	100.0%

30. Partisanship + Gender

	Freq.	%
Republican Female	368	24.2%
Republican Male	309	20.3%
Unaffiliated Female	142	9.4%
Unaffiliated Male	185	12.2%
Democratic Female	295	19.4%
Democratic Male	201	13.2%
Unsure	20	1.3%
Total	1520	100.0%

METHODOLOGY

This survey was conducted October 29 – November 1, 2022, with 1520 likely general election voters. It has a margin of error of $\pm 2.51\%$. Known registered voters were interviewed via IVR, SMS, and online panel. This survey was weighted to a likely general election voter universe.

ABOUT THE FIRM

[Cygna](#) is an award-winning international polling, public opinion, and predictive analytics firm that pioneered multi-mode polling, text-to-web collection, and emotive analysis. Cygna consistently ranks as the most accurate firm, and clients rely on Cygna's ability to create intelligence for action. Its team members have worked in 48 states and multiple countries on more than 2,700 corporate, public affairs, and political campaigns.

