



CYGNAL

Survey of Likely General Election Voters

Ohio Statewide

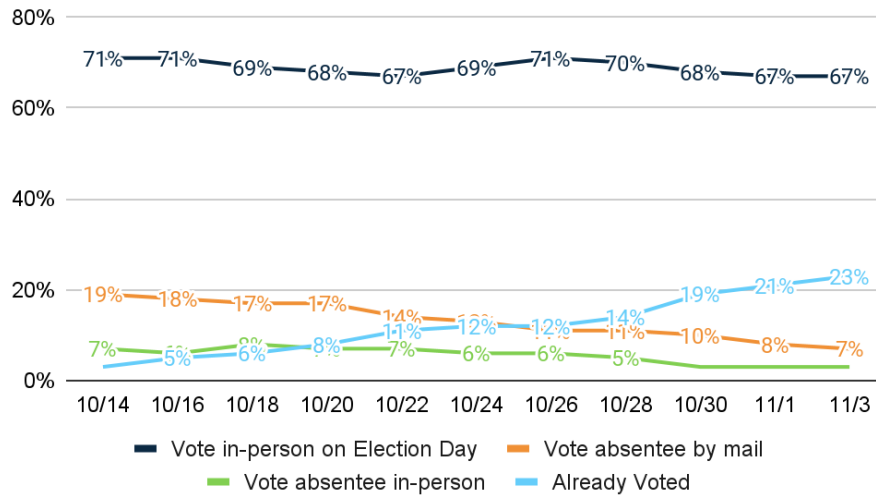
Conducted November 1 – 3, 2022

n=1498 | $\pm 2.53\%$



Vote Method

1. How do you plan to vote in the November general election for U.S. Senate, Governor, and state legislature?



	Freq.	%	11/1/22	10/29/22
<u>Vote in-person on Election Day</u>	998	66.7%	66.9%	68.4%
Definitely vote in-person on Election Day	809	54.0%	54.6%	55.2%
Probably vote in-person on Election Day	189	12.6%	12.3%	13.2%
<u>Vote absentee by mail</u>	109	7.3%	8.4%	9.7%
Definitely vote absentee by mail	84	5.6%	6.5%	7.8%
Probably vote absentee by mail	25	1.7%	1.9%	1.9%
<u>Vote absentee in-person</u>	44	2.9%	3.3%	3.2%
Definitely vote absentee in-person	29	2.0%	2.3%	2.1%
Probably vote absentee in-person	15	1.0%	1.0%	1.2%
<u>Already Voted</u>	346	23.1%	21.5%	18.7%
Already voted by mail	190	12.7%	12.3%	10.2%
Already voted early in person	156	10.4%	9.2%	8.4%
Total	1498	100.0%	100.0%	100.0%

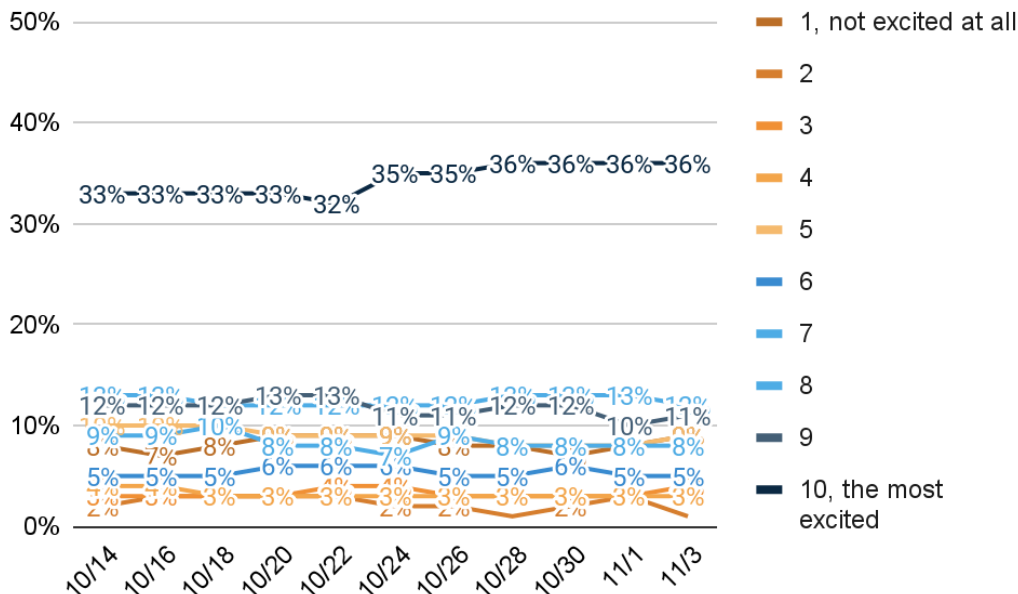
Enthusiasm

2. How excited are you to vote in the November general election for Governor, Congress, and state legislature on a scale of 1 to 10, with 1 being not excited at all and 10 being very excited?

	Freq.	%	11/1/22	10/29/22
1, not excited at all	141	9.4%	8.2%	7.3%
2	20	1.4%	2.5%	2.3%
3	59	3.9%	3.4%	2.9%
4	40	2.7%	2.6%	2.9%
5	131	8.8%	8.3%	7.9%
6	77	5.1%	5.4%	5.7%
7	113	7.5%	8.3%	7.9%

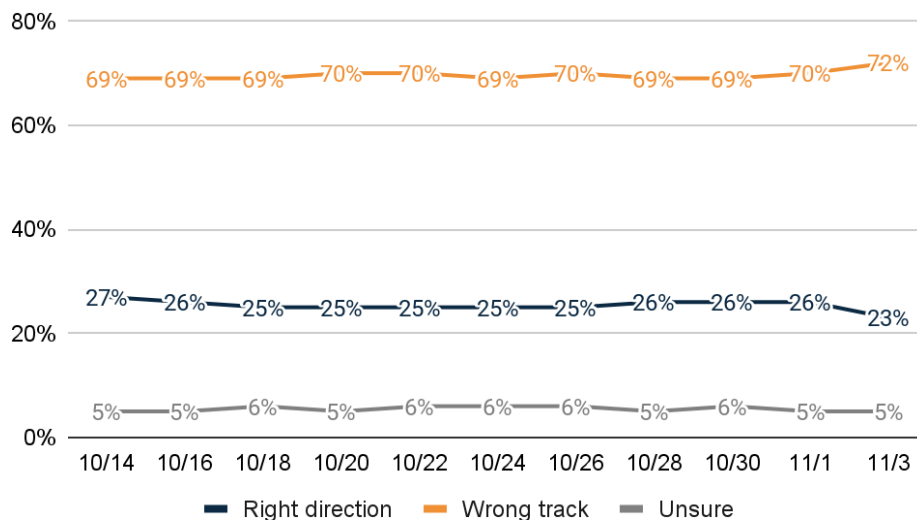


8	183	12.2%	12.6%	13.2%
9	165	11.0%	10.4%	11.8%
10, the most excited	543	36.2%	36.2%	36.4%
Unsure	25	1.7%	2.0%	1.7%
Total	1498	100.0%	100.0%	100.0%



US RD/WT

3. Generally speaking, would you say things in the United States are headed in the right direction or off on the wrong track?



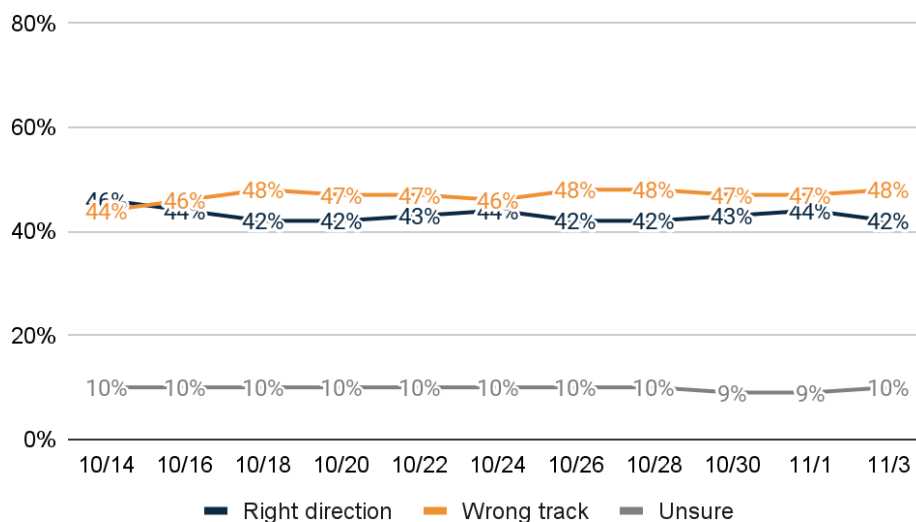
	Freq.	%	11/1/22	10/29/22
Right direction	343	22.9%	25.6%	25.6%
Definitely the right direction	90	6.0%	6.6%	7.2%
Mostly the right direction	254	16.9%	19.0%	18.4%
Wrong track	1079	72.0%	69.5%	68.6%
Mostly the wrong track	290	19.4%	20.6%	19.2%



Definitely the wrong track	789	52.7%	48.9%	49.4%
Unsure	76	5.1%	4.9%	5.8%
Total	1498	100.0%	100.0%	100.0%

Ohio RD/WT

4. Generally speaking, would you say things in Ohio are headed in the right direction or off on the wrong track?



	Freq.	%	11/1/22	10/29/22
Right direction	623	41.6%	44.3%	43.4%
Definitely the right direction	86	5.7%	7.3%	8.1%
Mostly the right direction	538	35.9%	37.0%	35.4%
Wrong track	720	48.1%	46.6%	47.5%
Mostly the wrong track	405	27.0%	26.5%	26.7%
Definitely the wrong track	315	21.1%	20.0%	20.8%
Unsure	155	10.3%	9.1%	9.1%
Total	1498	100.0%	100.0%	100.0%

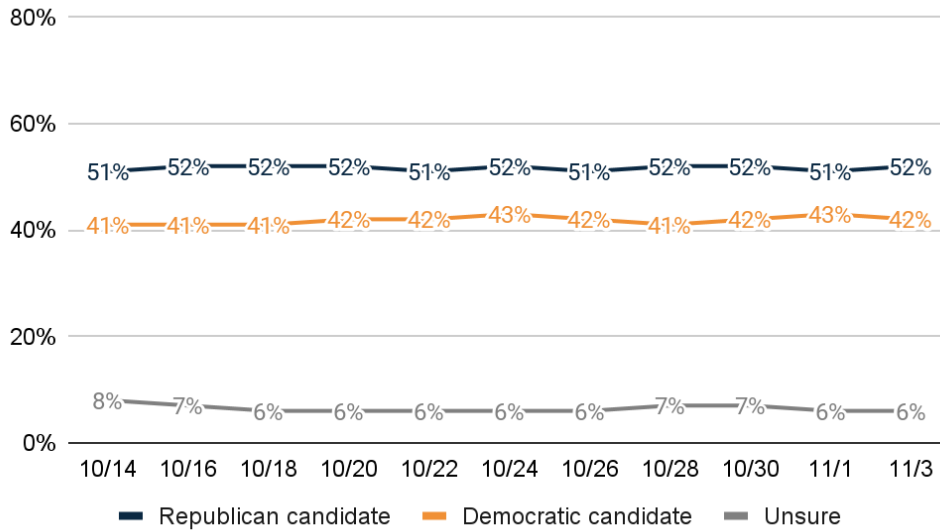
Generic Ballot

5. If the election was held today, and you had to make a choice, would you vote for the Republican or Democratic candidate for Congress?

	Freq.	%	11/1/22	10/29/22
Republican candidate	776	51.8%	51.2%	51.7%
Definitely the Republican candidate	656	43.8%	42.6%	43.0%
Probably the Republican candidate	120	8.0%	8.6%	8.7%
Democratic candidate	630	42.0%	42.7%	41.7%
Probably the Democratic candidate	106	7.1%	9.2%	8.9%
Definitely the Democratic candidate	524	35.0%	33.5%	32.7%

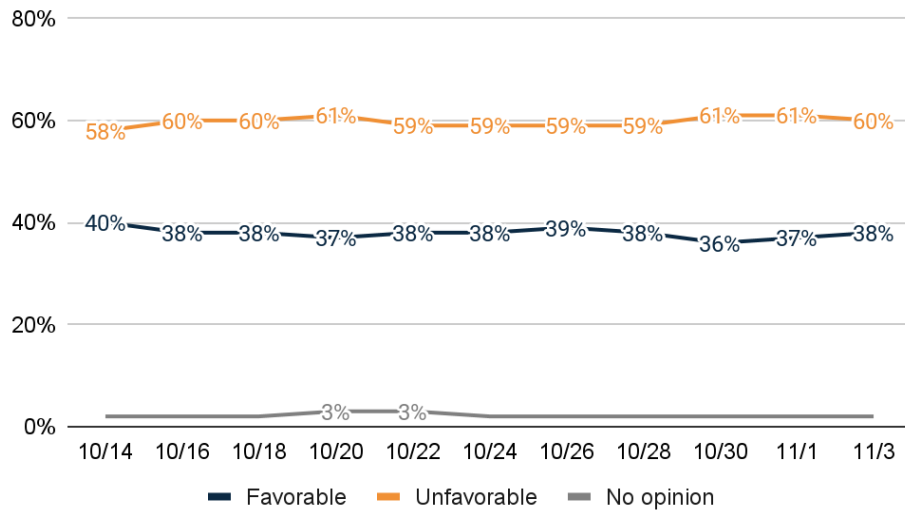


Unsure	92	6.2%	6.1%	6.6%
Total	1498	100.0%	100.0%	100.0%



Biden Image

6. Do you have a favorable or unfavorable opinion of Joe Biden?

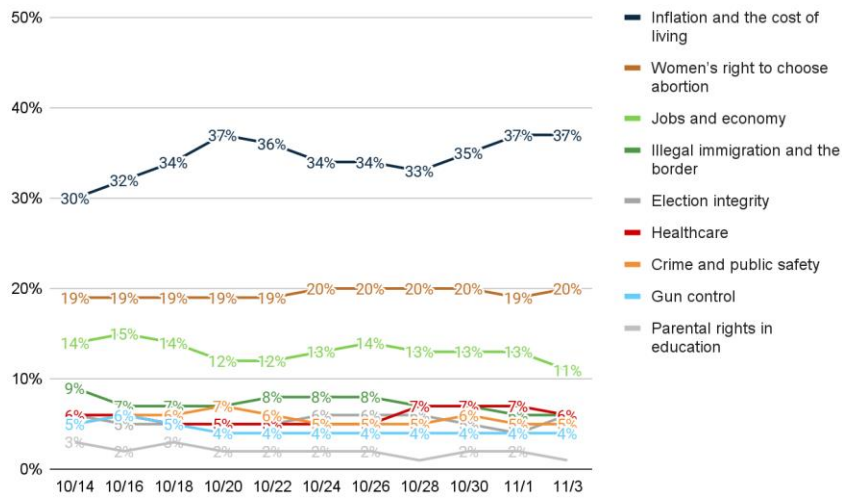


	Freq.	%	11/1/22	10/29/22
Favorable	571	38.1%	37.3%	36.3%
Very favorable	252	16.8%	17.6%	16.9%
Somewhat favorable	319	21.3%	19.7%	19.4%
Unfavorable	893	59.6%	61.1%	61.4%
Somewhat unfavorable	137	9.1%	10.2%	10.1%
Very unfavorable	756	50.5%	51.0%	51.3%
No opinion	34	2.3%	1.6%	2.3%
Total	1498	100.0%	100.0%	100.0%



Top Priority

7. From the following list, which issue is personally most important to you that would decide your vote for government?



	Freq.	%	11/1/22	10/29/22
Inflation and the cost of living	549	36.6%	37.2%	34.7%
Women's right to choose abortion	304	20.3%	19.2%	19.7%
Jobs and economy	171	11.4%	13.2%	13.0%
Illegal immigration and the border	95	6.3%	6.3%	6.6%
Election integrity	87	5.8%	4.4%	4.5%
Healthcare	93	6.2%	6.6%	7.0%
Crime and public safety	78	5.2%	5.3%	5.8%
Gun control	60	4.0%	4.3%	4.1%
Parental rights in education	17	1.1%	1.7%	1.6%
Don't know	45	3.0%	2.1%	3.0%
Total	1498	100.0%	100.0%	100.0%

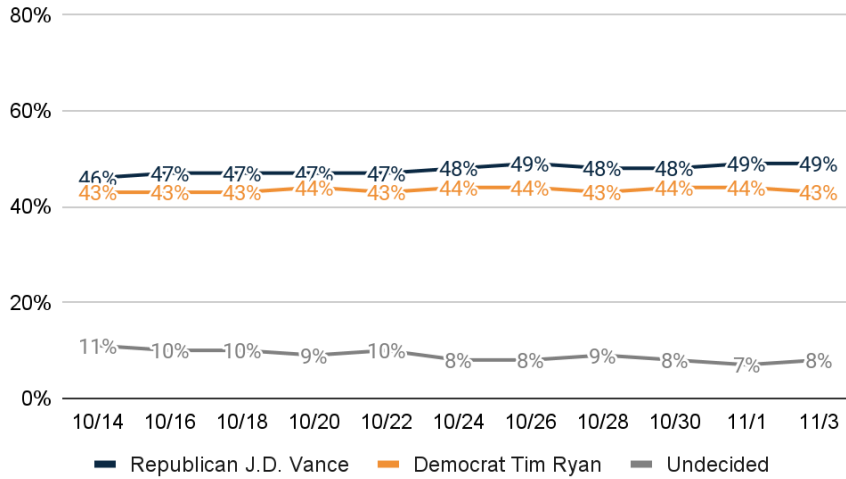
Thinking about the upcoming general elections in November...

US Sen Ballot

8. If the general election for U.S. Senate was held today, and you had to make a choice, who would you vote for?

	Freq.	%	11/1/22	10/29/22
Republican J.D. Vance	739	49.3%	48.7%	48.2%
Definitely Republican J.D. Vance	590	39.4%	37.1%	37.1%
Probably Republican J.D. Vance	148	9.9%	11.6%	11.1%
Democrat Tim Ryan	646	43.1%	44.1%	43.7%
Probably Democrat Tim Ryan	70	4.7%	6.7%	8.1%
Definitely Democrat Tim Ryan	575	38.4%	37.4%	35.6%
Undecided	114	7.6%	7.2%	8.1%
Total	1498	100.0%	100.0%	100.0%





Senate Undecided Probe

	Freq.	%
Lean Republican JD Vance	15	13.8%
Lean Democrat Tim Ryan	10	8.9%
Truly Undecided	89	77.3%
Total	114	100.0%

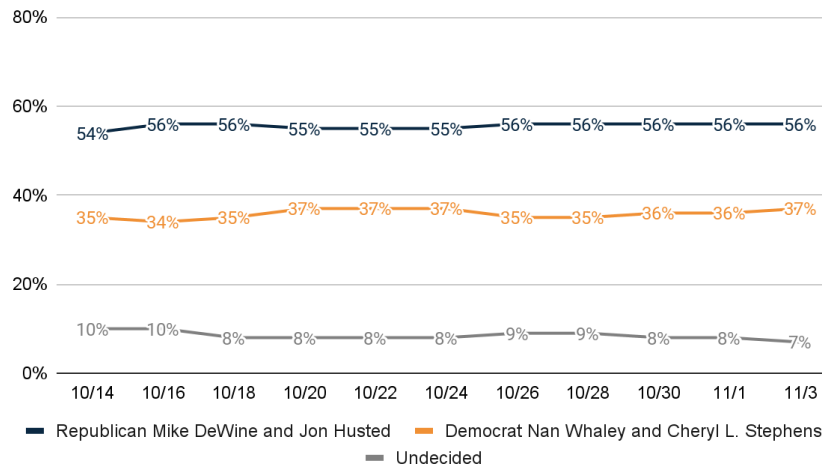
US Sen Ballot Combined

	Freq.	%
<u>Republican J.D. Vance</u>	<u>739</u>	<u>49.3%</u>
Definitely Republican J.D. Vance	590	39.4%
Probably Republican J.D. Vance	148	9.9%
<u>Democrat Tim Ryan</u>	<u>646</u>	<u>43.1%</u>
Probably Democrat Tim Ryan	70	4.7%
Definitely Democrat Tim Ryan	575	38.4%
<u>Undecided</u>	<u>114</u>	<u>7.6%</u>
Lean Republican JD Vance	15	1.0%
Lean Democrat Tim Ryan	10	0.6%
Truly Undecided	89	6.0%
Total	1498	100.0%



Gov Ballot

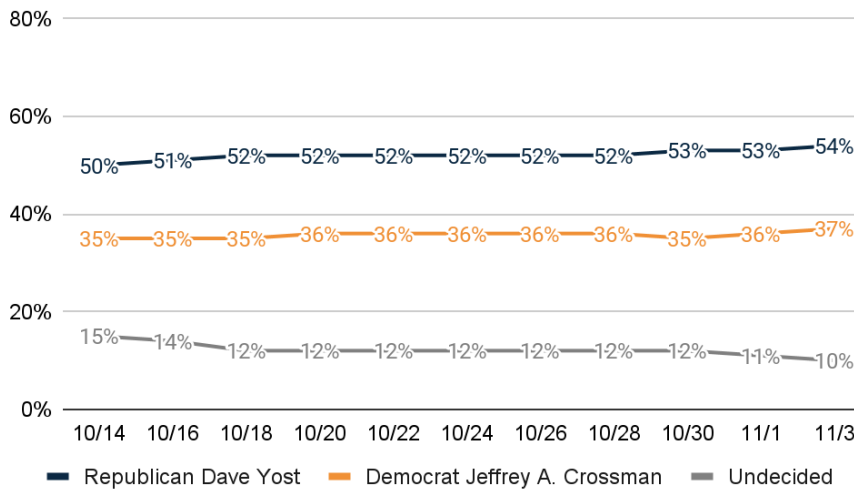
9. If the general election for Governor was held today, and you had to make a choice, who would you vote for?



	Freq.	%	11/1/22	10/29/22
<u>Republican Mike DeWine and Jon Husted</u>	836	55.8%	56.1%	56.0%
Definitely Republican Mike DeWine and Jon Husted	629	42.0%	41.7%	41.6%
Probably Republican Mike DeWine and Jon Husted	207	13.8%	14.3%	14.5%
<u>Democrat Nan Whaley and Cheryl L. Stephens</u>	553	36.9%	36.2%	35.5%
Probably Democrat Nan Whaley and Cheryl L. Stephens	109	7.3%	8.8%	8.9%
Definitely Democrat Nan Whaley and Cheryl L. Stephens	444	29.7%	27.4%	26.6%
Undecided	109	7.3%	7.8%	8.5%
Total	1498	100.0%	100.0%	100.0%

AG Ballot

10. If the general election for Attorney General was held today, and you had to make a choice, who would you vote for?



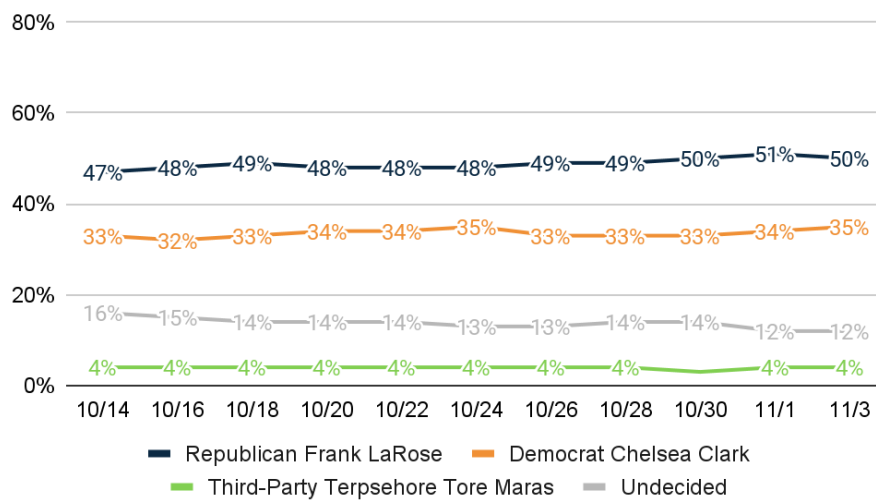
	Freq.	%	11/1/22	10/29/22
<u>Republican Dave Yost</u>	802	53.5%	53.2%	53.1%



Definitely Republican Dave Yost	613	40.9%	39.9%	39.8%
Probably Republican Dave Yost	189	12.6%	13.3%	13.4%
<u>Democrat Jeffrey A. Crossman</u>	<u>552</u>	<u>36.9%</u>	<u>35.6%</u>	<u>34.7%</u>
Probably Democrat Jeffrey A. Crossman	118	7.9%	7.8%	8.1%
Definitely Democrat Jeffrey A. Crossman	434	29.0%	27.8%	26.7%
Undecided	144	9.6%	11.2%	12.1%
Total	1498	100.0%	100.0%	100.0%

SoS Ballot

11. If the general election for Secretary of State was held today, and you had to make a choice, who would you vote for?

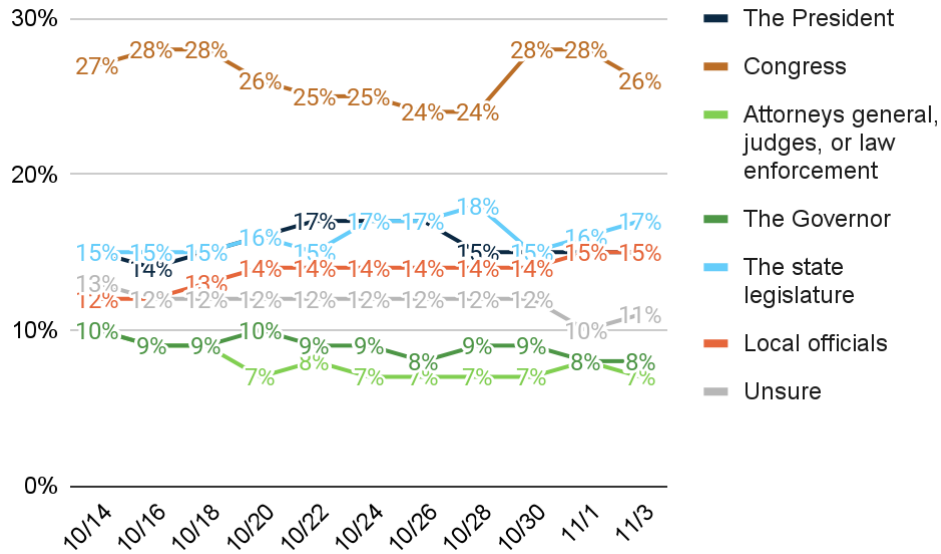


	Freq.	%	11/1/22	10/29/22
<u>Republican Frank LaRose</u>	<u>751</u>	<u>50.1%</u>	<u>50.6%</u>	<u>50.5%</u>
Definitely Republican Frank LaRose	573	38.2%	37.8%	37.0%
Probably Republican Frank LaRose	179	11.9%	12.8%	13.5%
<u>Democrat Chelsea Clark</u>	<u>519</u>	<u>34.7%</u>	<u>33.8%</u>	<u>33.0%</u>
Definitely Democrat Chelsea Clark	398	26.6%	25.3%	24.4%
Probably Democrat Chelsea Clark	121	8.1%	8.5%	8.6%
<u>Third-Party Terpsehore Tore Maras</u>	<u>54</u>	<u>3.6%</u>	<u>3.7%</u>	<u>3.0%</u>
Definitely Third-Party Terpsehore Tore Maras	37	2.5%	1.9%	1.8%
Probably Third-Party Terpsehore Tore Maras	17	1.2%	1.7%	1.2%
Undecided	173	11.6%	12.0%	13.5%
Total	1498	100.0%	100.0%	100.0%



Level of Govt

12. What level of government do you believe has the most impact on your day-to-day life?



	Freq.	%	11/1/22	10/29/22
The President	229	15.3%	14.6%	14.6%
Congress	388	25.9%	27.5%	27.9%
Attorneys general, judges, or law enforcement	104	6.9%	7.7%	7.3%
The Governor	126	8.4%	8.3%	8.8%
The state legislature	248	16.6%	16.3%	15.4%
Local officials	230	15.4%	15.1%	14.2%
Unsure	172	11.5%	10.4%	11.7%
Total	1498	100.0%	100.0%	100.0%

13. Are you female or male?

	Freq.	%
Female	804	53.7%
Male	694	46.3%
Total	1498	100.0%

14. What age range do you fall within?

	Freq.	%
Under 50	577	38.5%
18 - 34	265	17.7%
35 - 49	312	20.8%
50 and Over	921	61.5%
50 - 64	431	28.8%
65 or older	490	32.7%
Total	1498	100.0%



15. Generally speaking, do you think of yourself as a Democrat, Republican, or Unaffiliated?

	Freq.	%
<u>Republican</u>	<u>667</u>	<u>44.5%</u>
Strongly Republican	363	24.2%
Mostly Republican	304	20.3%
<u>Unaffiliated</u>	<u>319</u>	<u>21.3%</u>
<u>Democratic</u>	<u>488</u>	<u>32.6%</u>
Mostly Democratic	226	15.1%
Strongly Democratic	263	17.5%
Unsure	24	1.6%
Total	1498	100.0%

16. And thinking about your views toward politics and government, would you say you are...

	Freq.	%
<u>Conservative</u>	<u>661</u>	<u>44.1%</u>
Very conservative	318	21.2%
Somewhat conservative	343	22.9%
<u>Moderate</u>	<u>436</u>	<u>29.1%</u>
<u>Liberal</u>	<u>355</u>	<u>23.7%</u>
Somewhat liberal	223	14.9%
Very liberal	132	8.8%
Unsure	46	3.1%
Total	1498	100.0%

17. Do you consider the area where you live to be more rural, suburban, or urban?

	Freq.	%
Rural	509	34.0%
Suburban	757	50.5%
Urban	232	15.5%
Total	1498	100.0%

18. If you have one, what is your religious affiliation?

	Freq.	%
Catholic	271	18.1%
Mainline Protestant (Methodist, Lutheran, Episcopal, Anglican, etc.)	342	22.8%
Evangelical or Born-Again Protestant (Non-denominational Evangelical, Pentecostal, Church of God, etc.)	377	25.2%
Another religion	113	7.5%



Not religious	344	23.0%
Unsure	51	3.4%
Total	1498	100.0%

19. Which of the following best describes your race or ethnicity?

	Freq.	%
White or Caucasian	1243	83.0%
Asian or Pacific Islander	11	0.7%
Black or African American	157	10.5%
Hispanic or Latino	22	1.4%
Other	40	2.7%
Unsure	25	1.7%
Total	1498	100.0%

20. How often do you vote in general elections held in November of each even year?

	Freq.	%
Every general election including for president and in midterms	1028	68.6%
Most general elections, including for president and in some midterms	346	23.1%
Every general election for president but not midterms	67	4.4%
Most general elections for president	58	3.8%
Total	1498	100.0%

21. What annual household income range do you fall within out of the following options?

	Freq.	%
Less than \$40,000	379	25.3%
\$40,000 - \$69,999	357	23.8%
\$70,000 - \$99,999	270	18.0%
\$100,000 or more	413	27.6%
Unsure	79	5.3%
Total	1498	100.0%

22. Thinking back, who did you vote for in the 2020 election for President?

	Freq.	%
Republican Donald Trump	753	50.3%
Democrat Joe Biden	626	41.8%
Another candidate	47	3.2%
Did not vote	44	2.9%
Unsure	27	1.8%
Total	1498	100.0%

23. What's the highest level of education you have completed?

	Freq.	%
No degree	908	60.6%
Some high school	35	2.4%



High school diploma/GED	297	19.8%
Technical Certification	77	5.1%
Some college or Associate's Degree	499	33.3%
<u>At least College</u>	<u>586</u>	<u>39.1%</u>
Four-year undergraduate or Bachelor's Degree	339	22.7%
Graduate degree or further	246	16.4%
Unsure	4	0.3%
Total	1498	100.0%

24. Geo – DMA

	Freq.	%
<u>Dayton / NW OH</u>	<u>279</u>	<u>18.6%</u>
Dayton	130	8.7%
Ft. Wayne	9	0.6%
Lima	21	1.4%
Toledo	120	8.0%
<u>Cincinnati</u>	<u>196</u>	<u>13.1%</u>
<u>Columbus / Central OH</u>	<u>430</u>	<u>28.7%</u>
Charleston-Huntington	32	2.1%
Wheeling-Steubenville	36	2.4%
Columbus OH	340	22.7%
Parkersburg	7	0.5%
Zanesville	14	0.9%
<u>Cleveland / Akron</u>	<u>593</u>	<u>39.6%</u>
Cleveland-Akron (Canton)	502	33.5%
Youngstown	91	6.1%
Total	1498	100.0%

25. Age + Income

	Freq.	%
<65 <\$40k	219	14.6%
<65 \$40k-\$69k	222	14.8%
<65 \$70k-\$99k	192	12.8%
<65 \$100k+	330	22.0%
65+ <\$40k	159	10.6%
65+ \$40k-\$69k	135	9.0%
65+ \$70k-\$99k	78	5.2%
65+ \$100k+	83	5.6%
Unsure	79	5.3%
Total	1498	100.0%



26. Gender + Age

	Freq.	%
F 18 - 34	153	10.2%
F 35 - 49	141	9.4%
F 50 - 64	228	15.2%
F 65+	283	18.9%
M 18 - 34	112	7.5%
M 35 - 49	171	11.4%
M 50 - 64	204	13.6%
M 65+	207	13.8%
Total	1498	100.0%

27. Race + Gender

	Freq.	%
White Female	657	43.9%
White Male	586	39.1%
Asian Female	6	0.4%
Asian Male	4	0.3%
Black Female	103	6.9%
Black Male	54	3.6%
Hispanic Female	11	0.7%
Hispanic Male	11	0.7%
Other Female	22	1.5%
Other Male	18	1.2%
Unsure	25	1.7%
Total	1498	100.0%

28. Gender + Education

	Freq.	%
Female At least College	301	20.1%
Female No degree	501	33.4%
Male At least College	285	19.0%
Male No degree	407	27.2%
Unsure	4	0.3%
Total	1498	100.0%

29. Partisanship + Age

	Freq.	%
Republican 18-34	84	5.6%
Republican 35-49	109	7.2%
Republican 50-64	203	13.6%
Republican 65+	271	18.1%
Unaffiliated 18-34	84	5.6%
Unaffiliated 35-49	84	5.6%
Unaffiliated 50-64	82	5.5%
Unaffiliated 65+	69	4.6%



Democratic 18-34	95	6.3%
Democratic 35-49	108	7.2%
Democratic 50-64	141	9.4%
Democratic 65+	145	9.7%
Unsure	24	1.6%
Total	1498	100.0%

30. Partisanship + Gender

	Freq.	%
Republican Female	345	23.0%
Republican Male	322	21.5%
Unaffiliated Female	145	9.7%
Unaffiliated Male	174	11.6%
Democratic Female	307	20.5%
Democratic Male	181	12.1%
Unsure	24	1.6%
Total	1498	100.0%

METHODOLOGY

This survey was conducted November 1 – 3, 2022, with 1498 likely general election voters. It has a margin of error of $\pm 2.53\%$. Known registered voters were interviewed via IVR, SMS, and online panel. This survey was weighted to a likely general election voter universe.

ABOUT THE FIRM

[Cygnal](#) is an award-winning international polling, public opinion, and predictive analytics firm that pioneered multi-mode polling, text-to-web collection, and emotive analysis. Cygnal consistently ranks as the most accurate firm, and clients rely on Cygnal's ability to create intelligence for action. Its team members have worked in 48 states and multiple countries on more than 2,700 corporate, public affairs, and political campaigns.

